



# Power Macintosh G3 Blue and White Modem Replacement

Modem assembly not working or broken? Replace it! This is not meant to be confused with the Ethernet assembly.

Written By: Aaron Cooke



---

## INTRODUCTION

I wasn't able to find a replacement modem assembly online so you are on your own for that part.

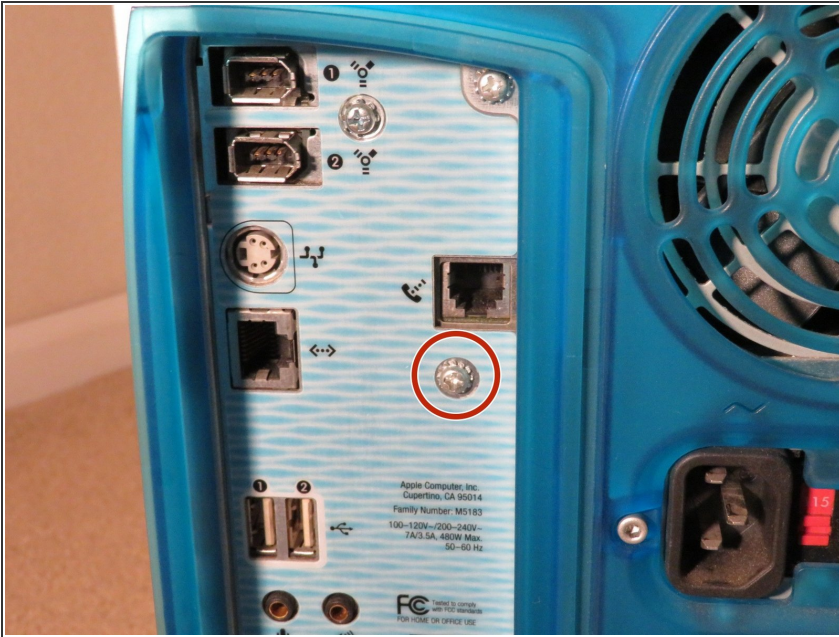
---



### TOOLS:

- [Phillips #1 Screwdriver](#) (1)
-

## Step 1 — Before opening up your Power Mac...



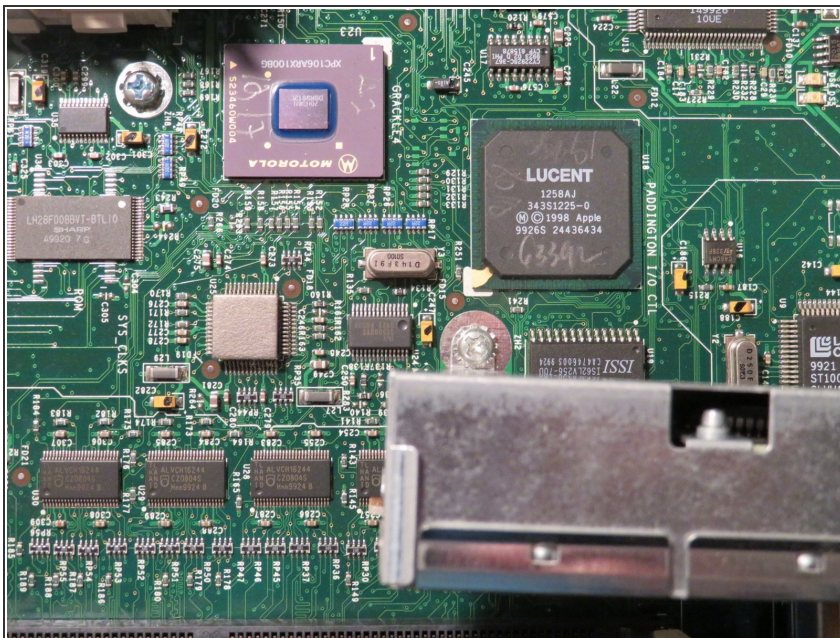
- Remove the Phillips #1 screw circled in the picture. Set it aside for re-assembly.

## Step 2



- i** Unfortunately, I am unable to provide OG content for this step due to my Power Mac's outer case being severely damaged. Once I get my new outer case I will update this step.
- Lift the latch on the right side panel to reveal the internals.
- i** If you are doing this on a hard surface I highly suggest you put a mat down between the door and the ground to prevent scratches.

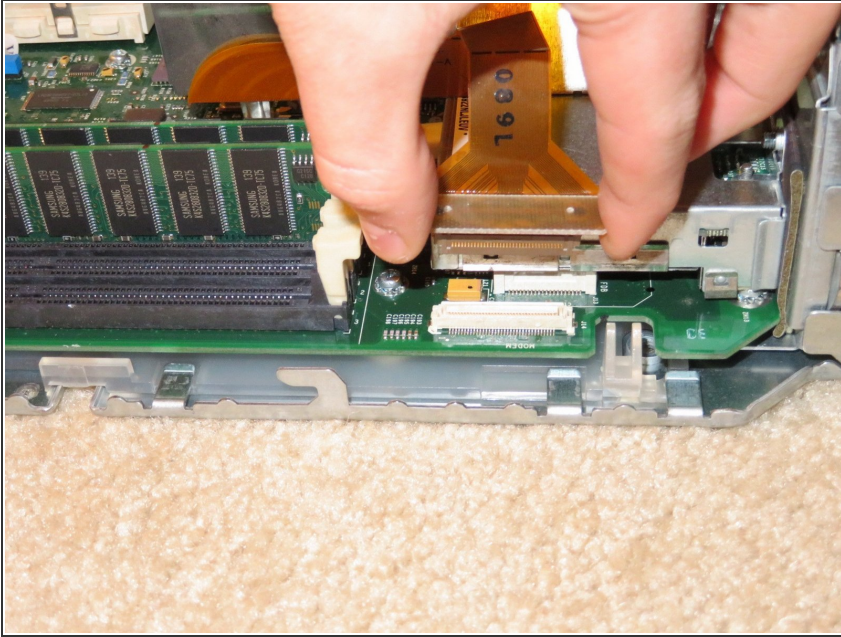
## Step 3



- Remove the single Phillips #1 screw circled in the picture.
- i** I apologize for the lack of picture quality. The only camera and lighting I had were my iPhone X's camera and a table lamp. Lol!



## Step 4



- Disconnect the modem's flex cable from the connector on the logic board.

## Step 5



- Lift the modem assembly out of its place on the logic board.

To reassemble your device, follow these instructions in reverse order.