



HP LaserJet P1102w Left Side Panel Replacement

How to take off the plastic housing of the printer to get to the internals.

Written By: Jerome Etten



INTRODUCTION

These steps will show how to replace the left side panel from the printer. This prerequisite guide will be used for the power plug removal, motherboard removal, and half of the drive belt removal guides.



TOOLS:

- [Spudger](#) (1)
 - [Phillips #1 Screwdriver](#) (1)
-

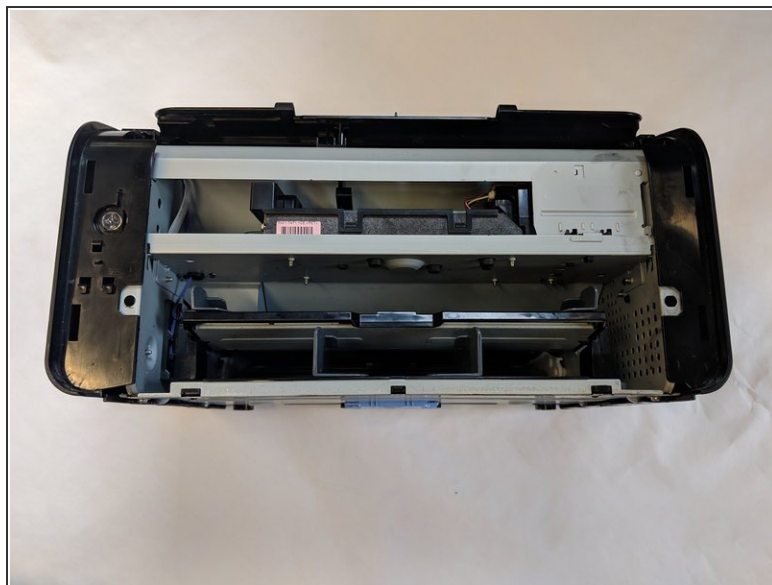
Step 1 — Left Side Panel



- Flip printer on it's back. Using the plastic spudger, pry off front panel. There will be two main points to focus as shown.

⚠ Pry carefully to not break any plastic.

Step 2



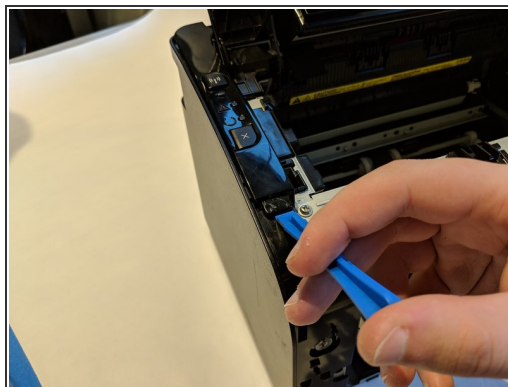
- Now that the pry points are free lift up the front panel.

Step 3



- Unscrew the #1 Phillips screw 6mm on the back of the printer.

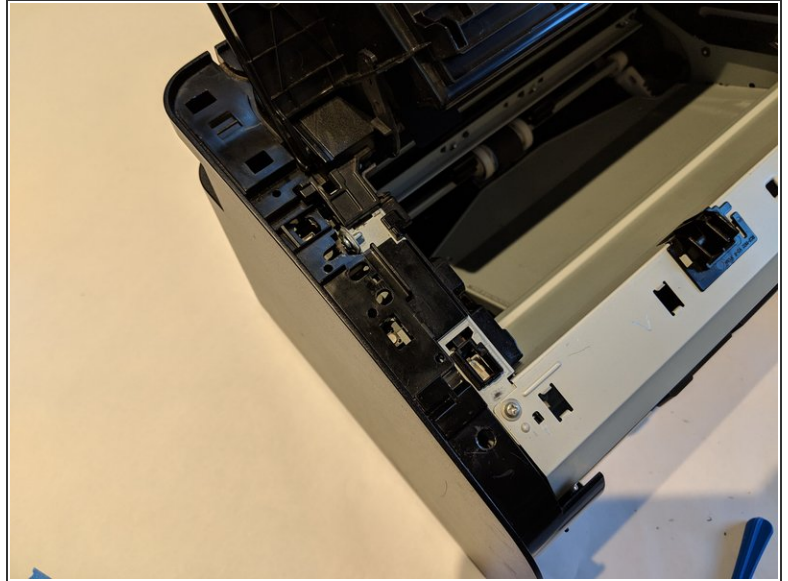
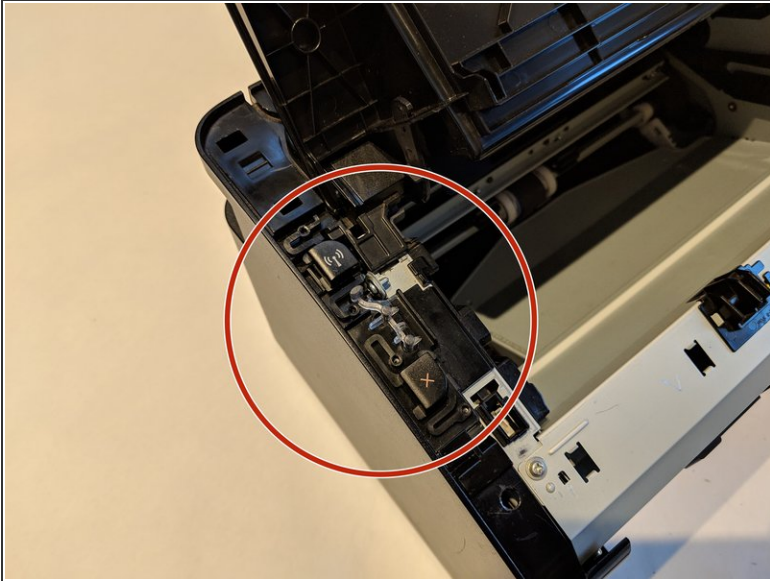
Step 4



- Using the plastic spudger, remove the button housing from the top left of printer.

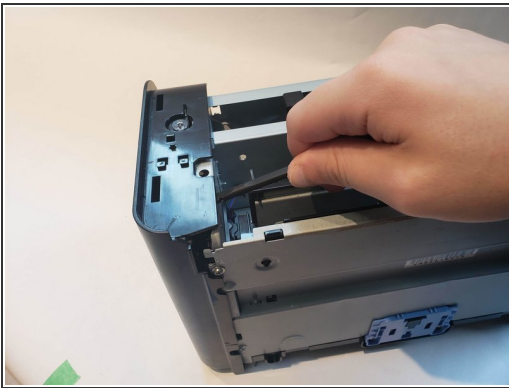
⚠ Pry carefully to not break any plastic.

Step 5



- Once the housing is removed, remove the three buttons.

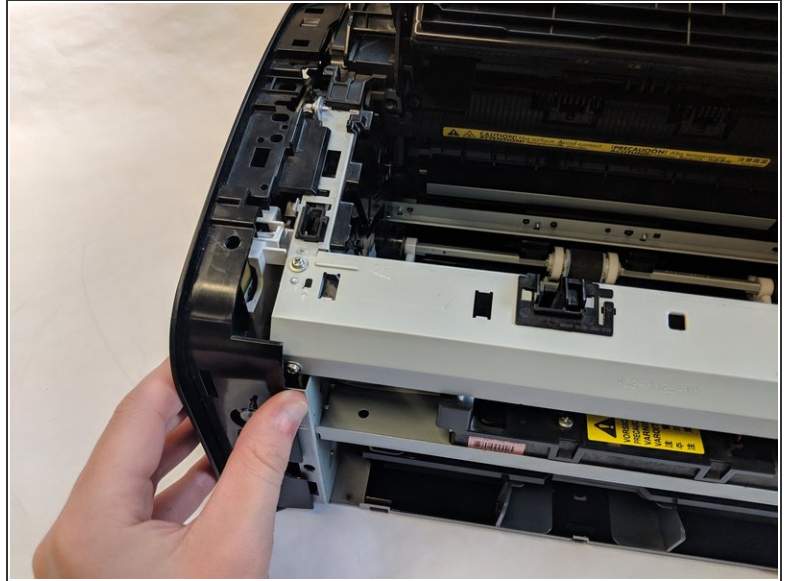
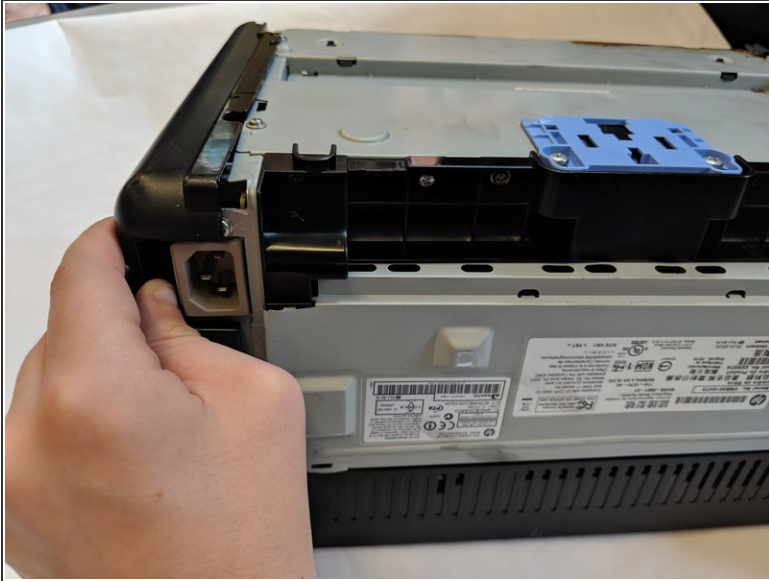
Step 6



- Use the plastic spudger to remove the side panel. There are three main prying points as shown.

⚠ Pry carefully to not break any plastic.

Step 7



- With all pry points free, remove the side panel.

To reassemble your device, follow these instructions in reverse order.