



Acer Aspire S3-951-6432 Wi-Fi Card Replacement

How to remove and replace the Acer Aspire S3-951-6432's Wi-Fi card that is not working.

Written By: Cynthia Bennett



INTRODUCTION

The Wi-Fi card is what enables the laptop to connect to a wireless internet connection, such as one found in a school or in a cafe. If your laptop is not maintaining a steady internet connection, then your Wi-Fi card is either disconnected or will need to be replaced. The goal of this guide is to show how to replace a faulty Wi-Fi card (or upgrade to a newer one). The Wi-Fi card is only connected to the computer by a few cables, and is relatively easy to remove and replace. In this guide, a plastic opening tool, a spudger, and a Phillips #0 screwdriver will be needed. The steps required for this guide will only take a few minutes to complete.

When reconnecting the two cables that attach to the Wi-Fi card, remember to align them as they were before they were removed. Additionally, don't forget to disconnect the battery from the motherboard before beginning any internal repair or replacement work. This way, electric discharge and damage to internal components can be avoided.

TOOLS:

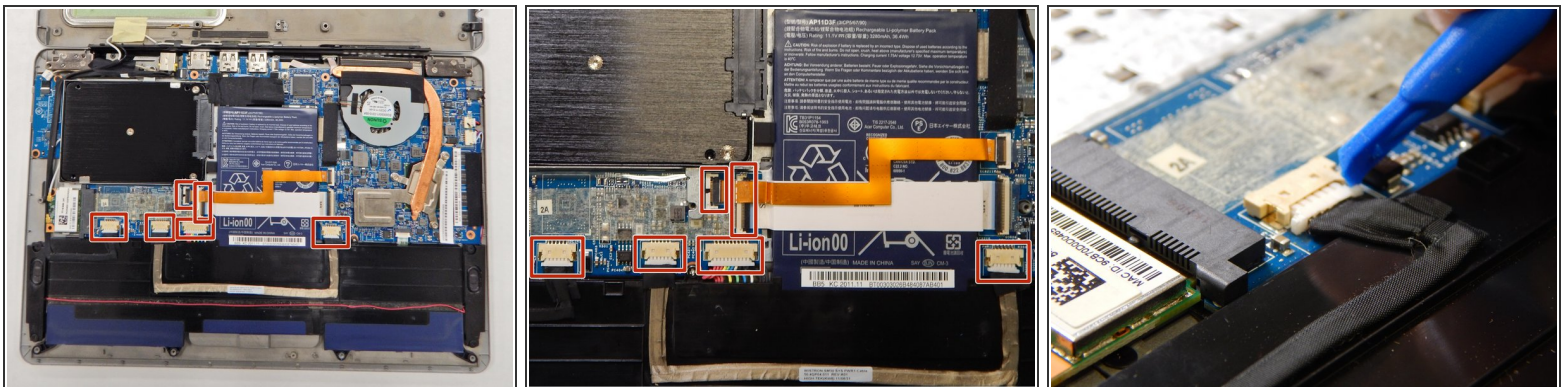
- [Spudger](#) (1)
 - [iFixit Opening Tools](#) (1)
 - [Phillips #0 Screwdriver](#) (1)
-

Step 1 — Battery



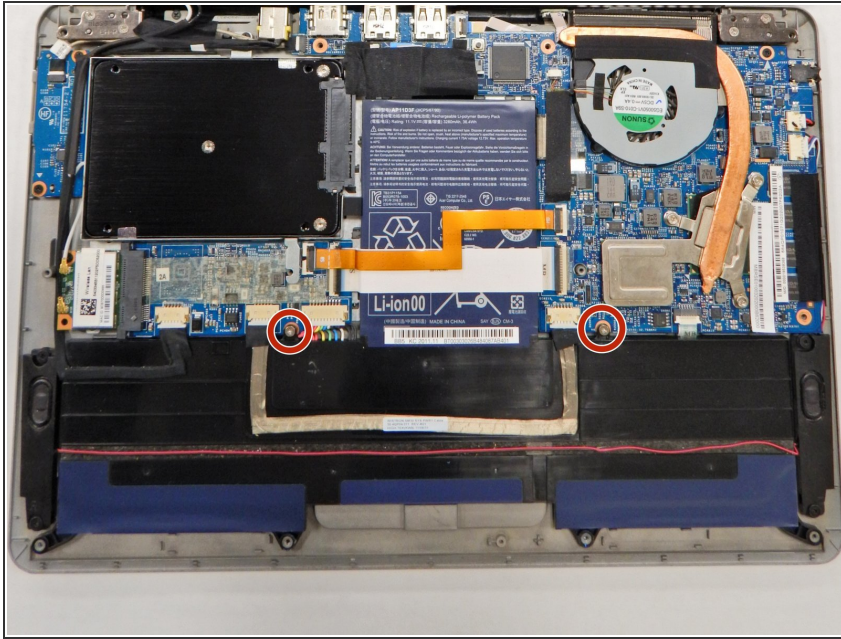
- Keeping it closed, turn the laptop upside down.
 - With the Phillips #0 screwdriver, remove the twelve 5 mm screws that hold the laptop together.
 - Insert the plastic opening tool between the plastic casings to pull the bottom lid of the laptop up.
- i** You do not need to pull the lid all the way off.

Step 2



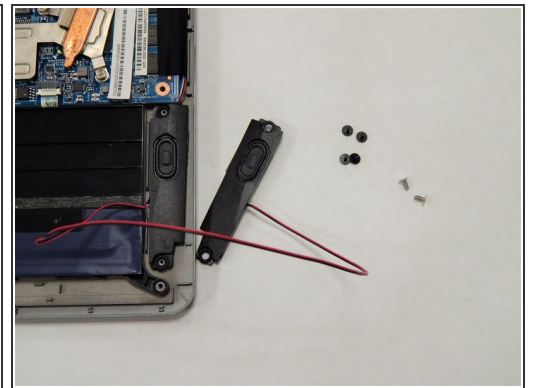
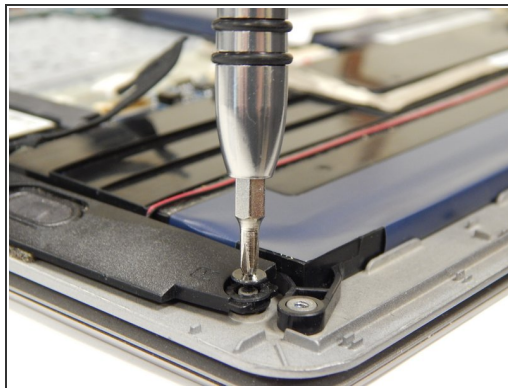
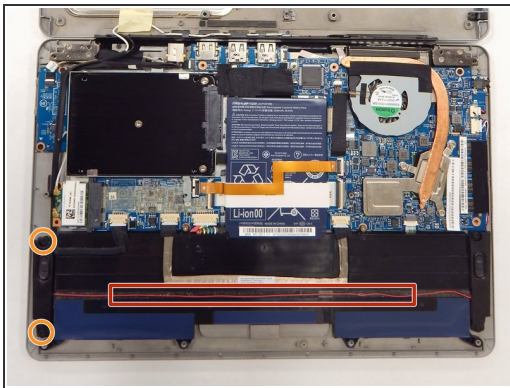
- Locate the six cables that are connected to the motherboard. The cable with the white strip is located underneath the cable with the orange strip.
 - Using the plastic opening tool on one side and your fingernail on the other, wedge each cable out of its socket.
- i** The battery is now disconnected. If you want to remove the battery, follow the remaining steps in this guide. However, if you only wish to disconnect the battery to do other internal work, skip the remaining steps in this guide and continue on to other guides.

Step 3



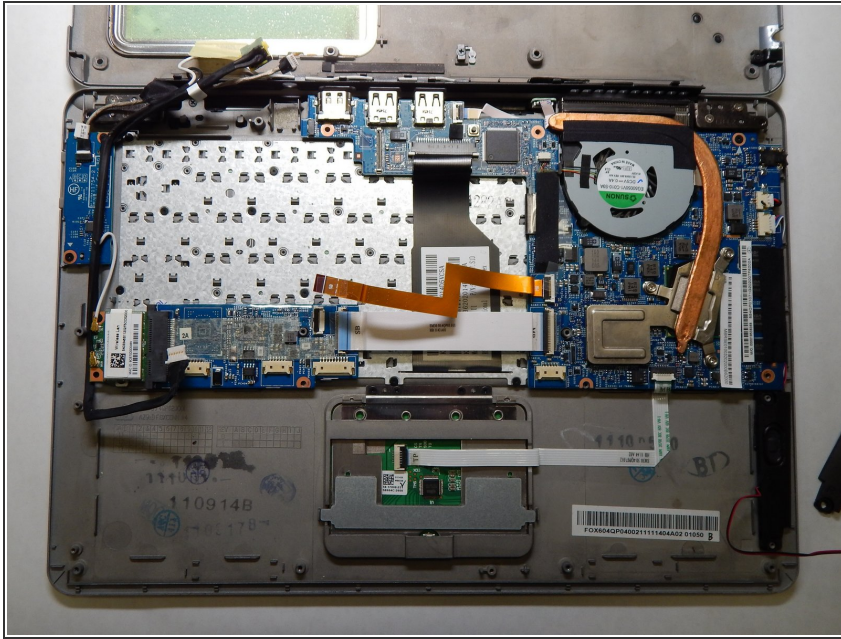
- With the Phillips #0 screwdriver, remove the two 5 mm screws that are located above the long black piece of the battery.

Step 4



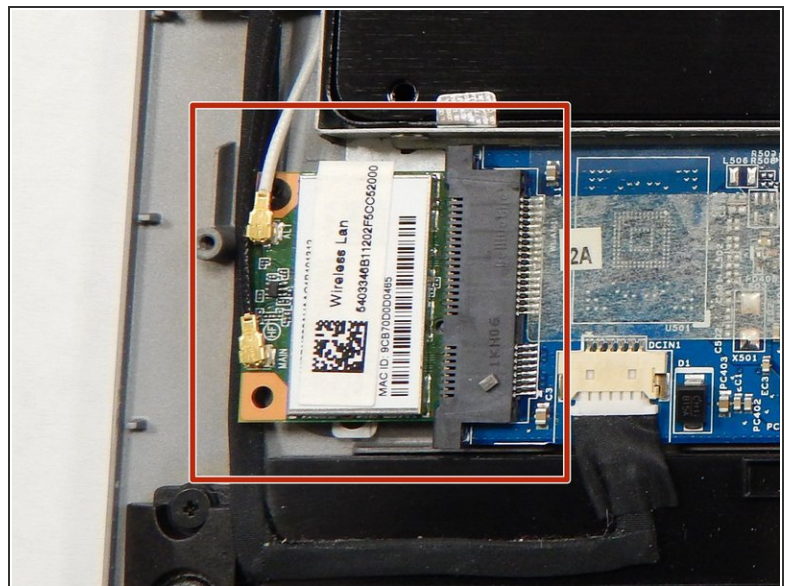
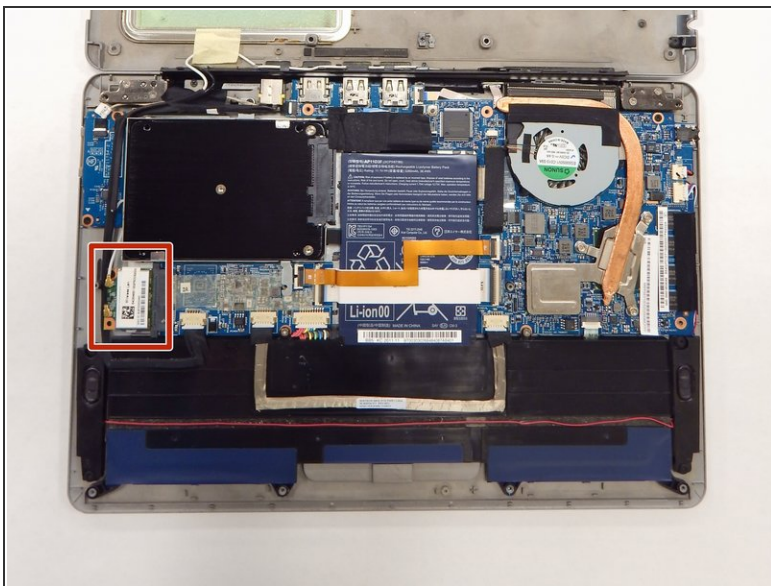
- Locate the two speakers for this laptop that are connected above the battery by a thin red cord.
- Using the Phillips #0 screwdriver, remove the two 3 mm screws holding the left speaker in place.
- Pull the left speaker up along with the red cord and leave it off to the right side.
- ⓘ If you plan to disassemble the laptop down to the motherboard, you will also need to remove the two 3 mm screws holding the right-side speaker in place with a Phillips #0 screwdriver.

Step 5



- Without bending it, lift the entire battery (both the long black piece and the rectangular blue piece) straight up. Place it off to one side.

Step 6 — Wi-Fi Card



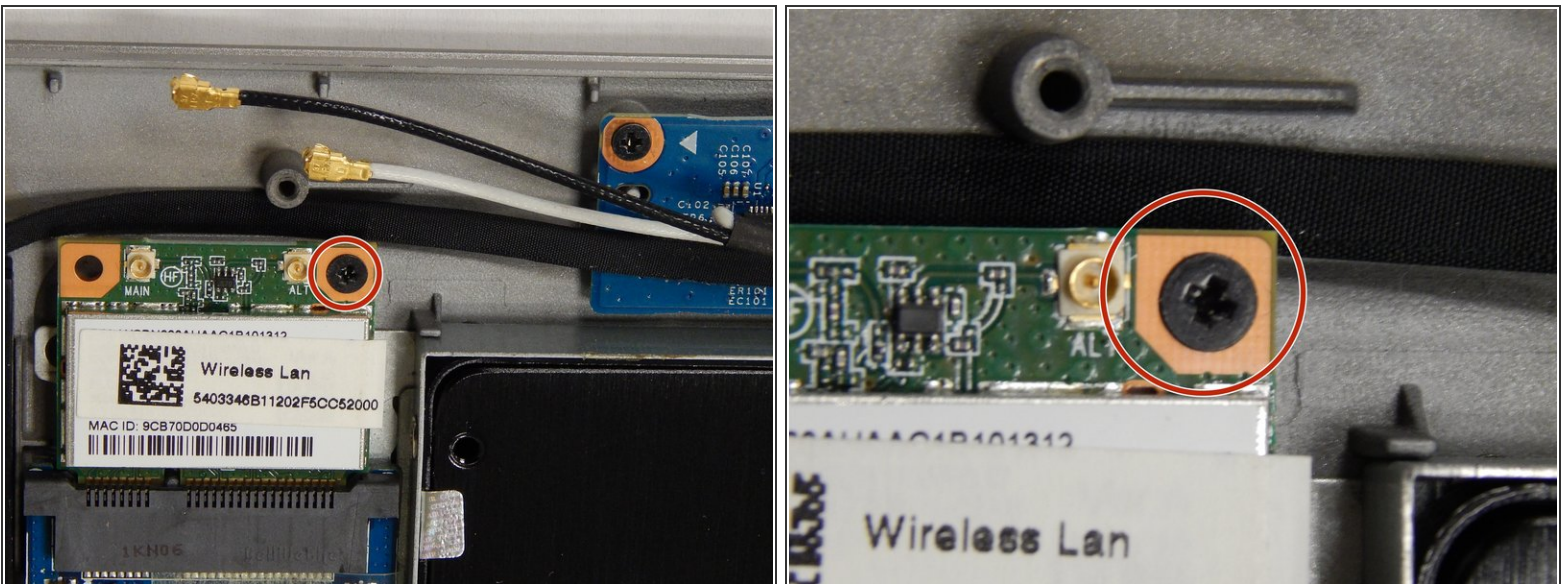
- Locate the Wi-Fi card (it is near the black rectangular hard drive).

Step 7



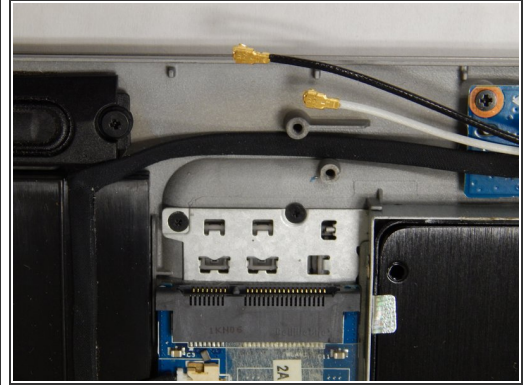
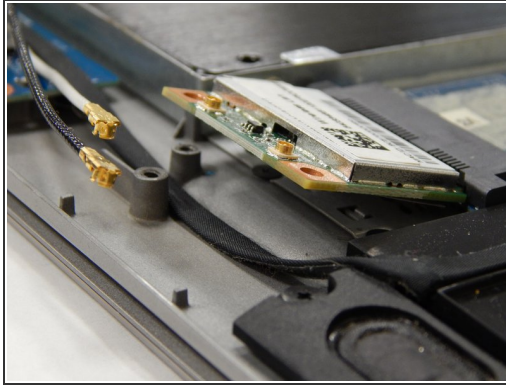
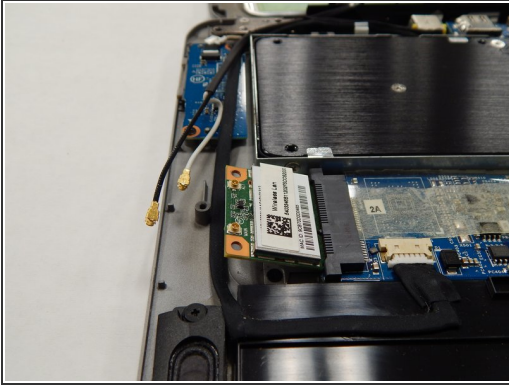
- Lift up and remove the two cables attached to the Wi-Fi card (one is white and one is black) with the spudger tool.

Step 8



- Remove the single 3 mm screw located on the top-right side of the Wi-Fi card using the Phillips #0 screwdriver.
- ☞ After replacing the Wi-Fi card, make sure that the cables are aligned. Otherwise, you could damage the metal connectors on the chip.

Step 9



- Lift and remove the Wi-Fi card.

To reassemble your device, follow these instructions in reverse order.