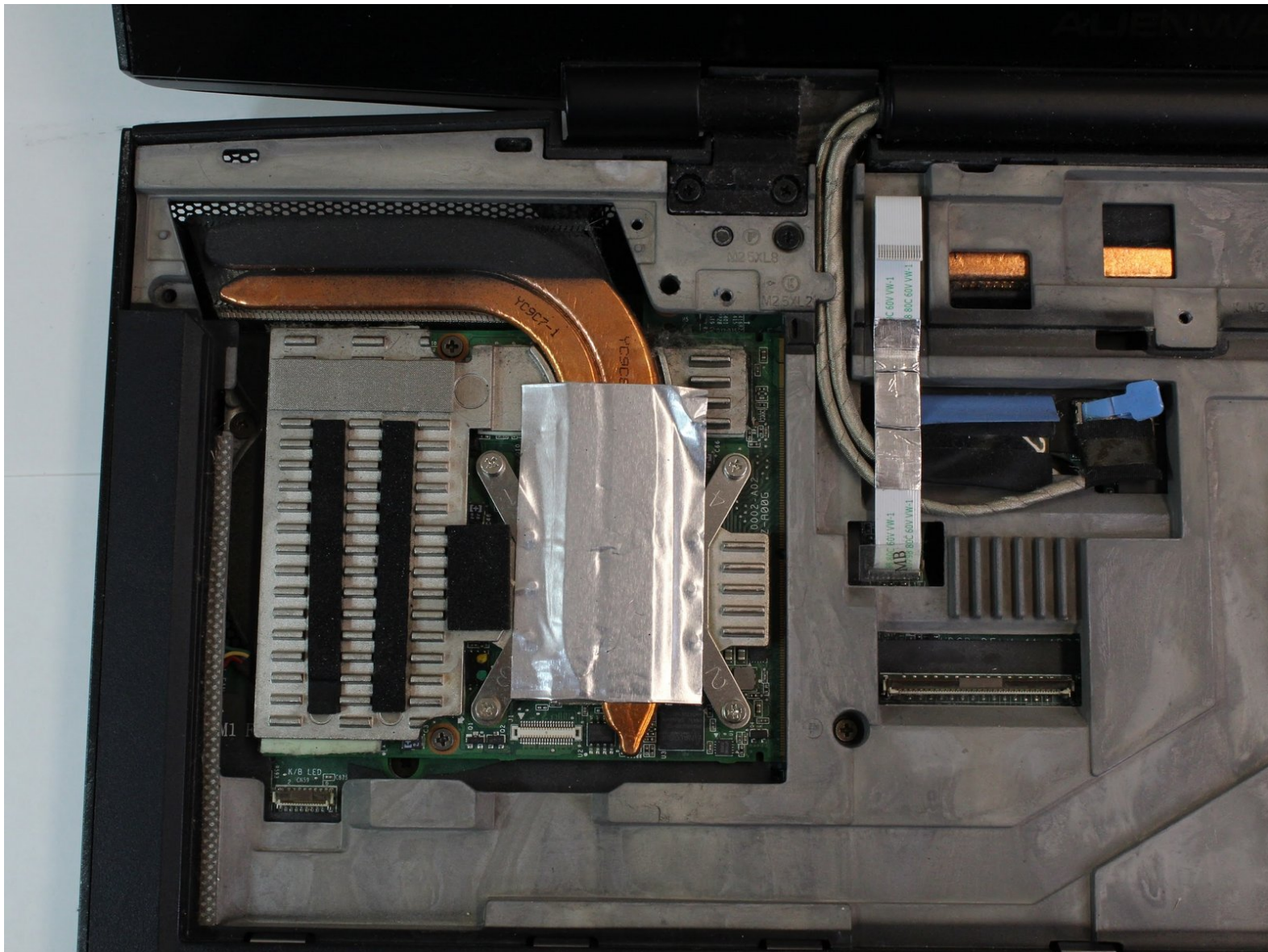




# Alienware M17x P01E Graphics Card Replacement

This guide will show you how to remove and replace the Graphics Card in your Alienware M17x P01E.

Written By: Andrew Ruvalcaba



---

## INTRODUCTION

Are the images and graphics on certain websites not loading properly? Consider using this guide to replace the graphics card of your laptop.

---

### TOOLS:

- [Phillips #1 Screwdriver](#) (1)
  - [Phillips #0 Screwdriver](#) (1)
  - [Spudger](#) (1)
-

## Step 1 — Battery



⚠ Please power off the computer and deplete the battery before attempting the following step.

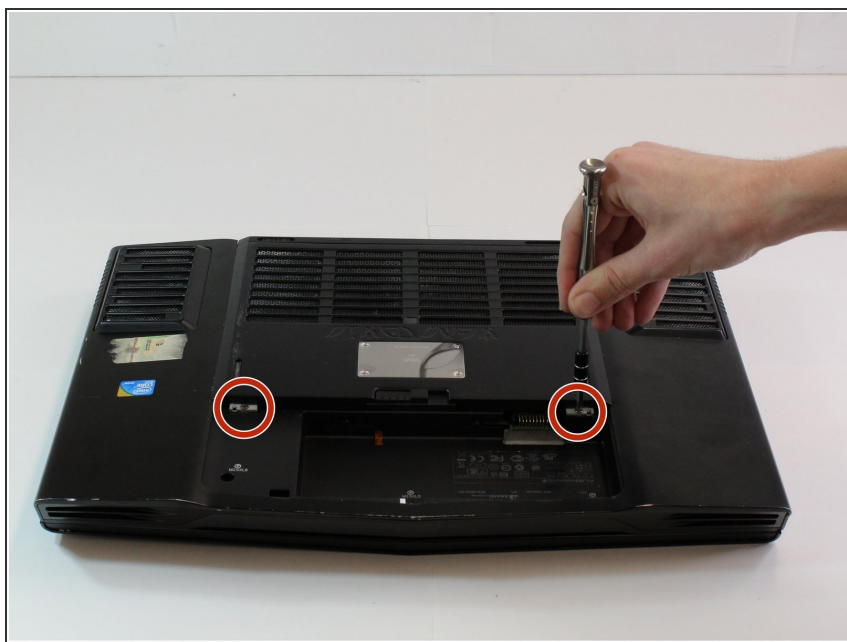
## Step 2



- Press down on the battery latch and slide it to the left.
- Lift the battery out once it pops out.



## Step 3 — Compartment Door



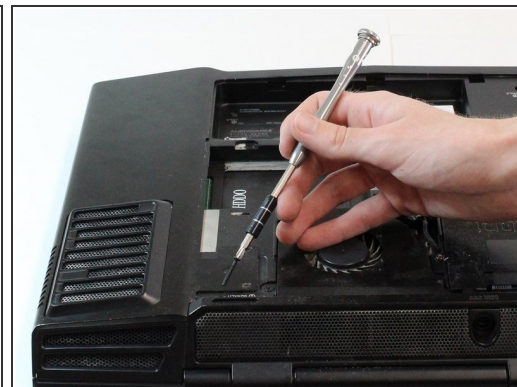
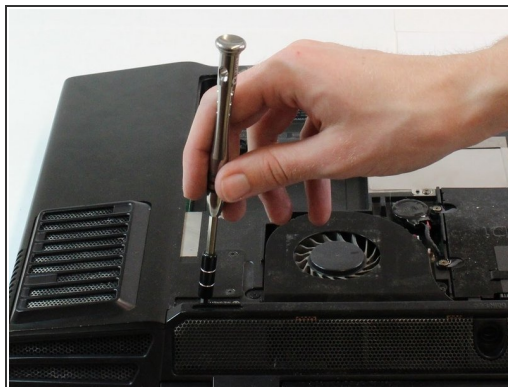
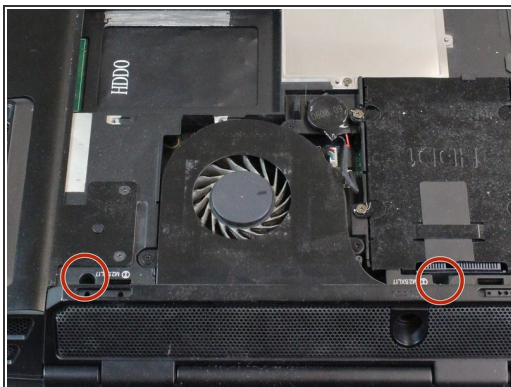
- Loosen the two silver Phillips #1 screws.
- ⓘ The screws are held to the compartment door by a washer and cannot be removed.

## Step 4



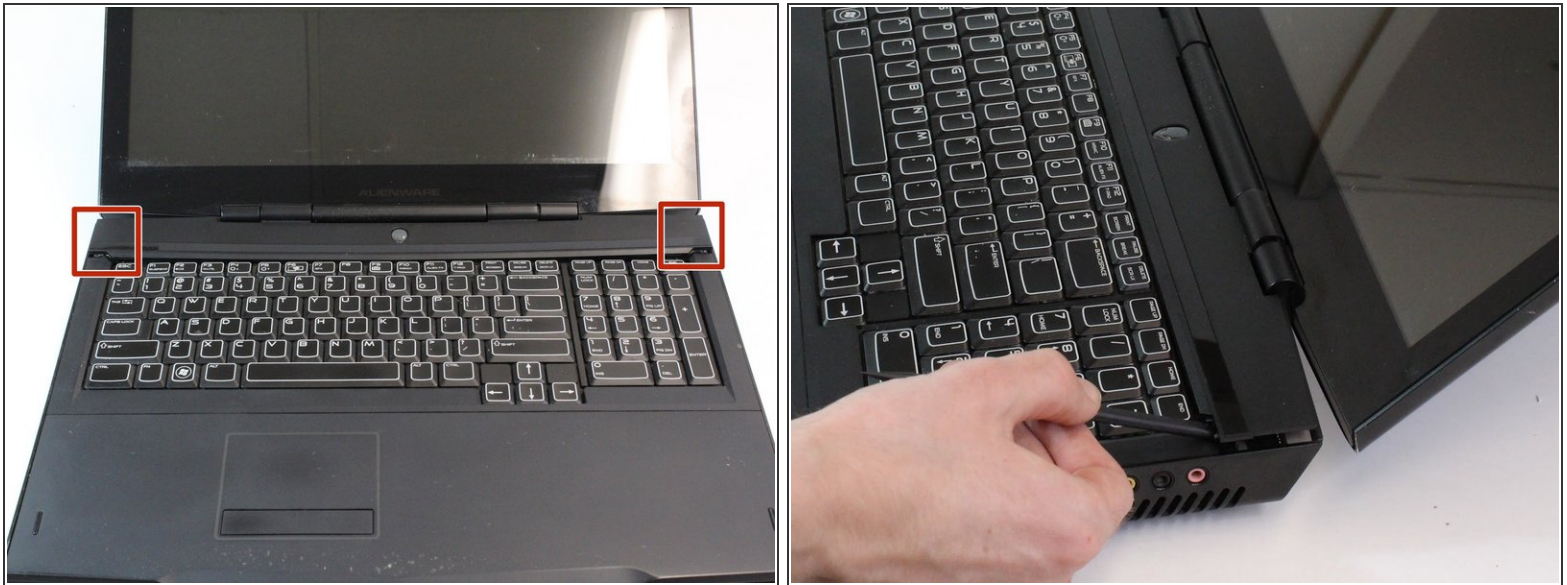
- Use your hand to gently lift and remove the compartment door.

## Step 5 — Center Control Cover



- Remove the two 2mm Phillips #0 screws from the recesses on the left and right side of the processor fan.

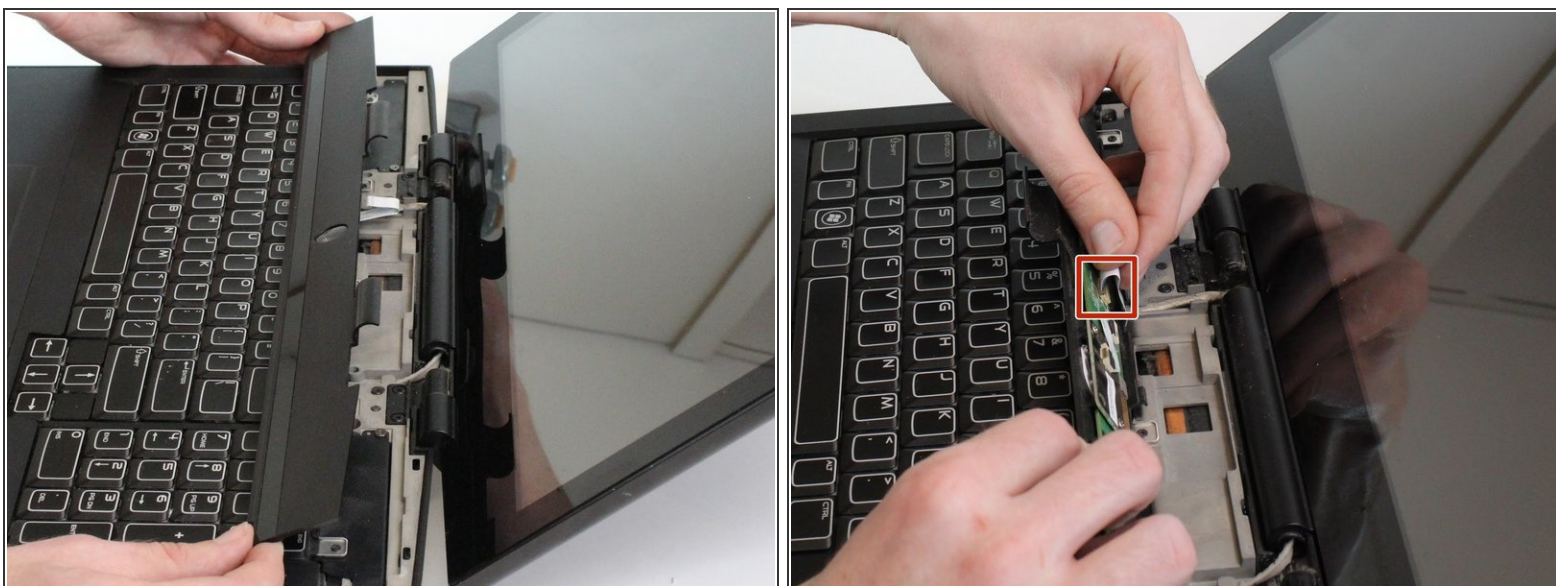
## Step 6



- Turn the laptop top side up and fully open the display.
- ⓘ The center control panel is between the display and the keyboard. Fully opening the display ensures that there is enough room to pry and lift the center control panel.
- Pry the center control panel up from its left and right edges with the Spudger.
- ⚠ The center control panel may require a decent amount of force to pry free. Do not immediately lift the panel from the laptop once it has been pried free. A cable is connected from the laptop to the center control panel.



## Step 7



- Lift the center control panel from the laptop.
- Tilt the center control panel away from the display carefully.
- Lift the latch open to remove the cable connecting from the laptop to the center control panel.

## Step 8 — Keyboard



- Remove the five 3mm Phillips #0 screws.

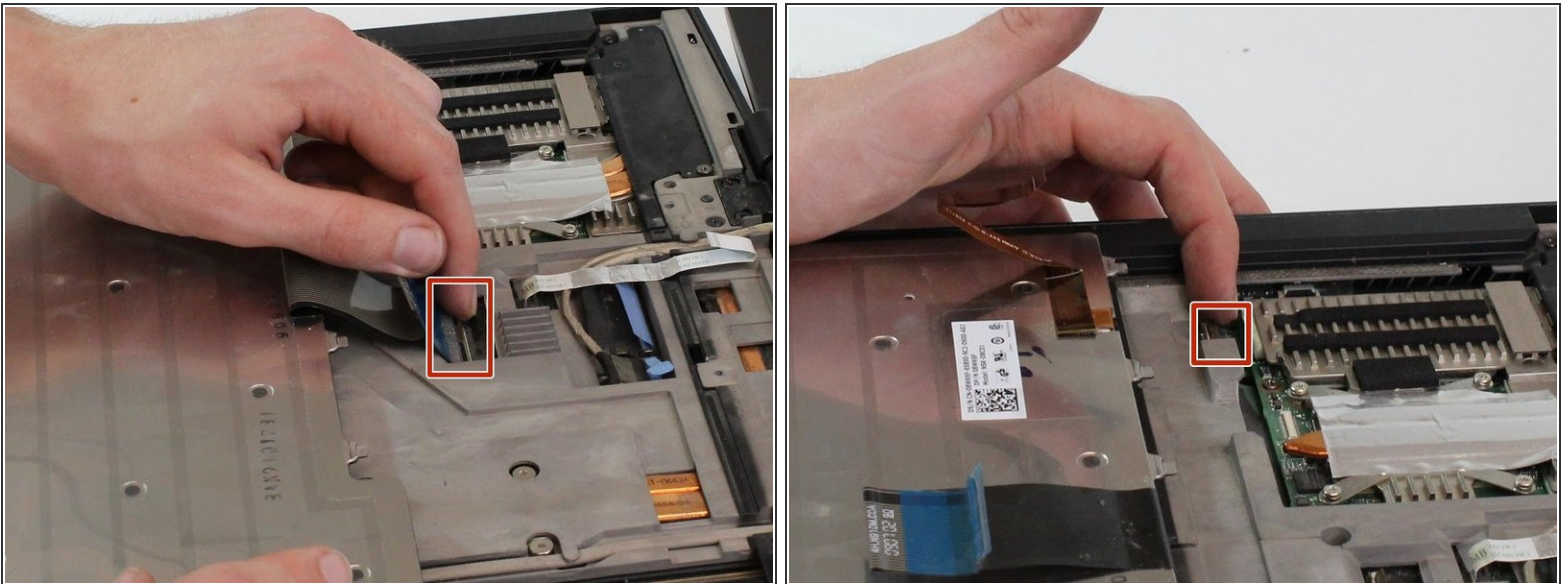
## Step 9



**i** There two cables connected from the underside of the keyboard to the laptop.

- Slide and lift the keyboard towards the display to unhook it from the laptop.
- Tilt the keyboard away from the display carefully.

## Step 10

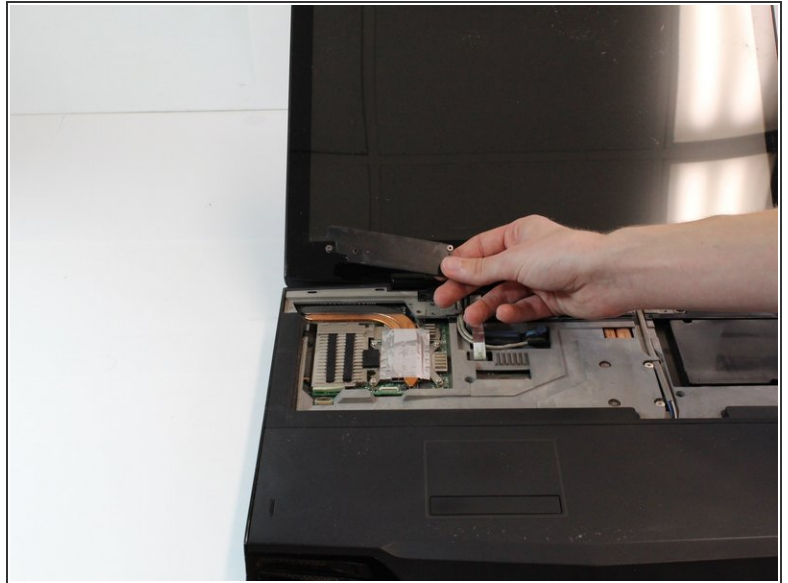
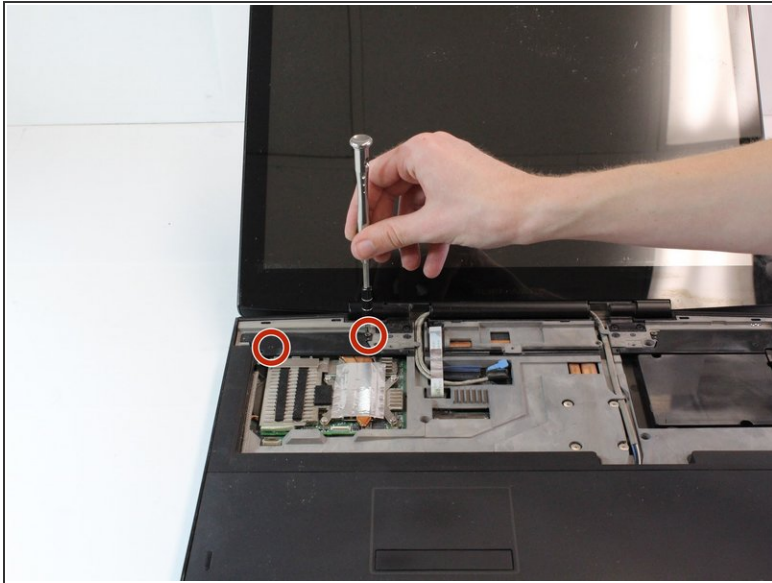


- Flip open the two latches that connect the wide keyboard cable and thin light cable to the laptop.
- Lift the keyboard off the laptop and set aside.

**i** Don't be alarmed if the cables are already disconnected. Simply lifting the keyboard from the laptop may cause the cables to disconnect because the latches require very little force to open.

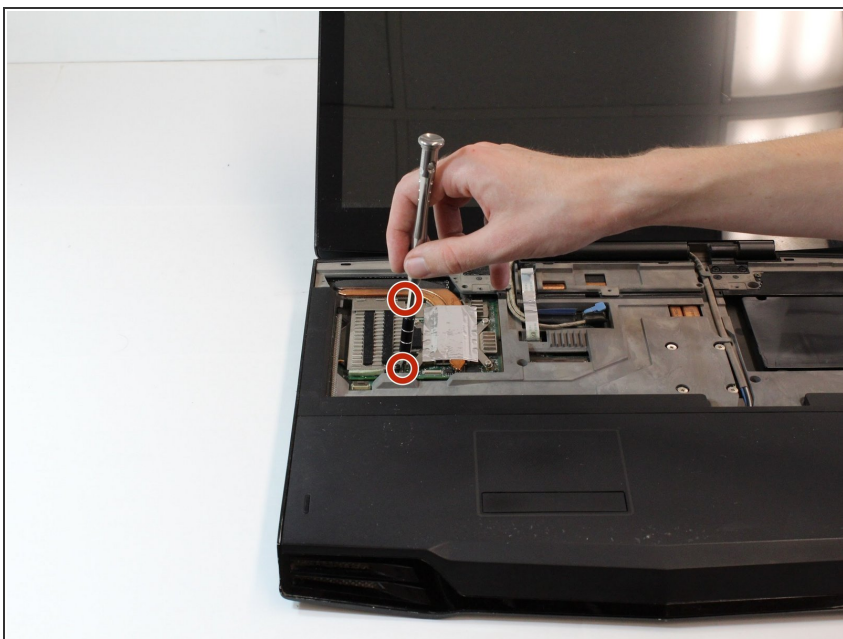


## Step 11 — Graphics Card



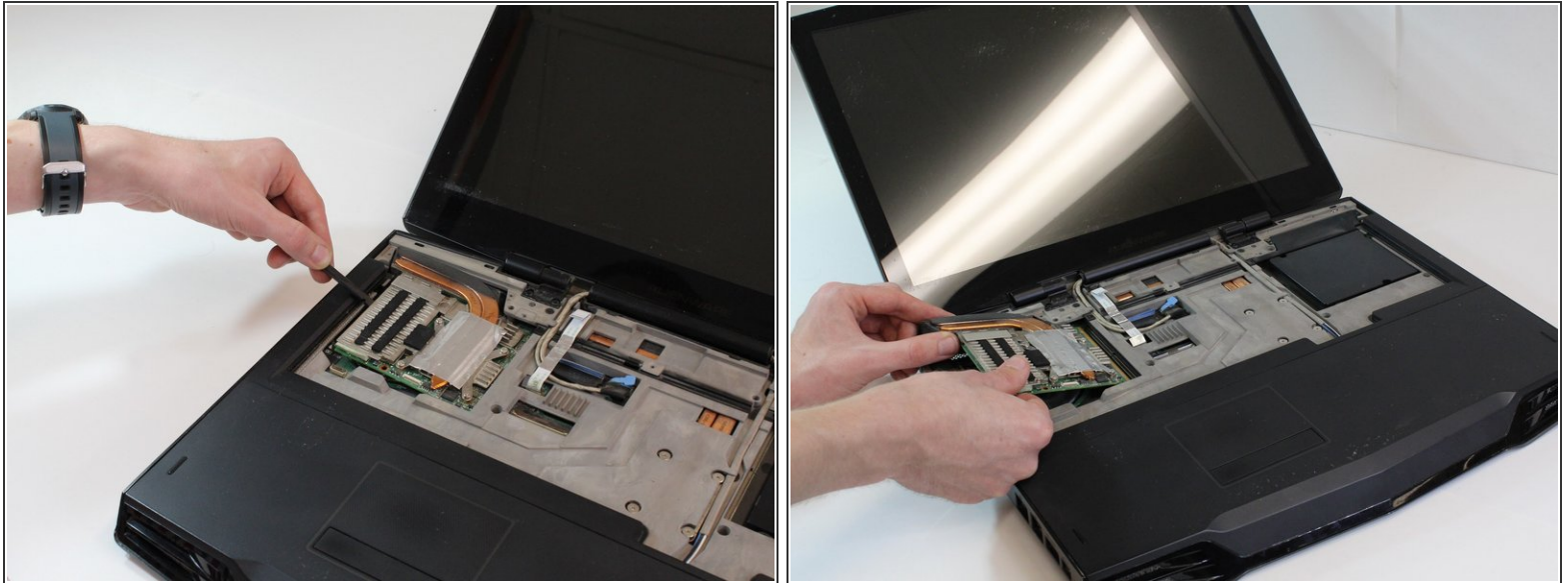
- Unscrew the two Phillips #1 screws that secure the bracket.
- ⓘ The screws are held to the bracket by a washer and cannot be removed.
- Use your hand to remove the bracket.

## Step 12



- Remove the two 4mm Phillips #1 screws that secure the Graphics Card.

## Step 13



- Use the spudger to pry and lift the Graphics Card from its compartment.
- Use your hand to lift and pull out the Graphics Card.

To reassemble your device, follow these instructions in reverse order.