



# Sony Betamovie BMC-220 Cassette Compartment Replacement

This guide will explain how to remove the cassette compartment cover which covers the interior components of the Sony Betamovie BMC-220.

Written By: Mary McLaughlin



---

## INTRODUCTION

Use this guide to remove the cassette compartment of your camcorder.



### TOOLS:

- [Phillips #1 Screwdriver](#) (1)
  - [Phillips #2 Screwdriver](#) (1)
-

## Step 1 — Battery



- Orient your Betamovie so that the back of the device is sitting flat, and the bottom of the device is facing you.
- Slide the RELEASE switch up to bring the hand drip down.

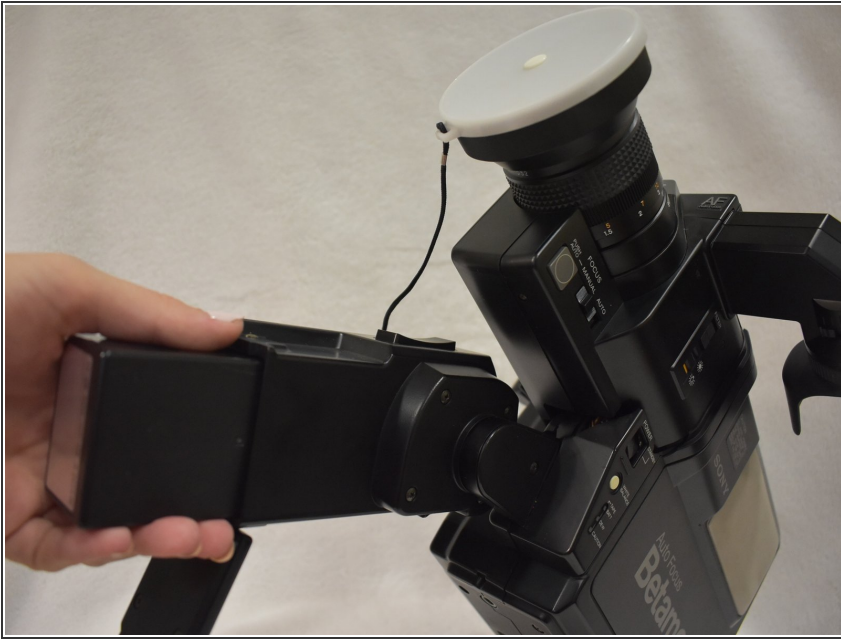
## Step 2



- Turn the BATTERY knob to OPEN, and open the lid.
- Reminder: When inserting a new battery, make sure the knob is turned to OPEN.
- Be careful not to point the hand grip down when turning the BATTERY knob. The battery pack may fall out.

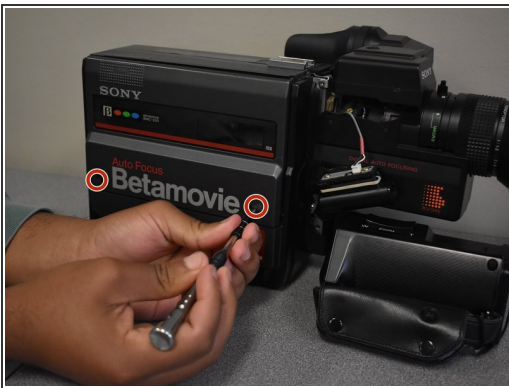


### Step 3



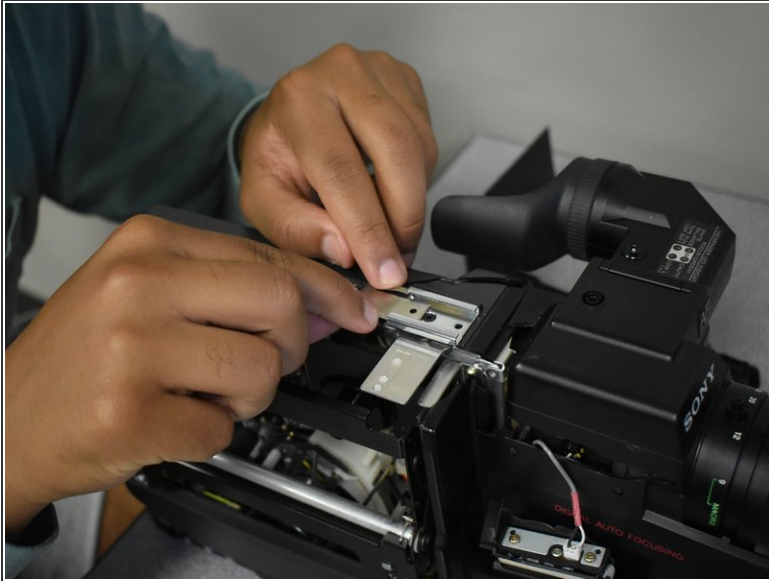
- Remove the battery from the Betamovie.

### Step 4 — Cassette Compartment



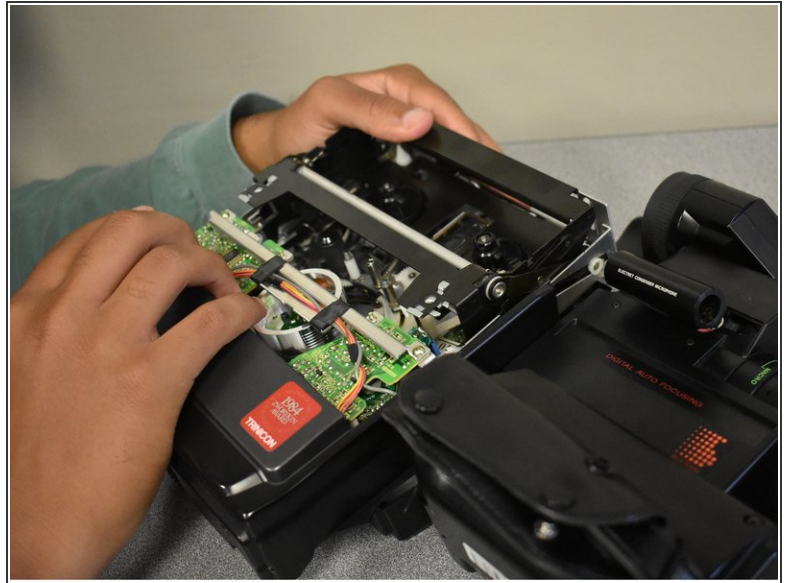
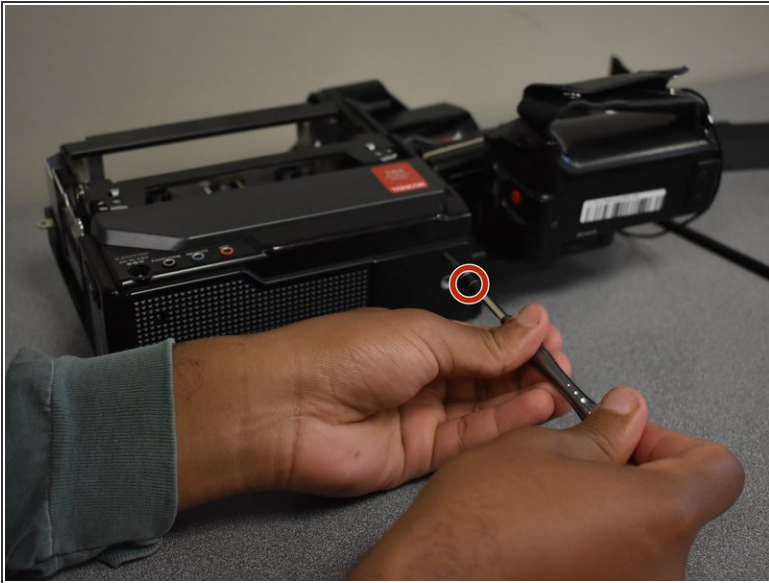
- Remove the two screws (2mm x 6mm) at the base of the Cassette compartment using the Phillips #1 screwdriver.
- Remove the two screws (2mm x 6mm) at the back of the Betamovie using the Phillips #2 screwdriver.
- Once all of the screws are removed, pop the cassette cover off of the camera.

## Step 5



- Remove the silver piece at the top of the Betamovie using your hands.
- Remove the two screws (2mm x 6mm) under the flat silver piece using the Phillips #1 screwdriver. The silver metal clip comes off once the screws are removed.

## Step 6



- Remove the two screws (2mm x 6mm) underneath the cassette compartment on the bottom of the Betamovie with the Phillips #1 screwdriver.
- Remove the bottom piece of the cassette compartment.

To reassemble your device, follow these instructions in reverse order.