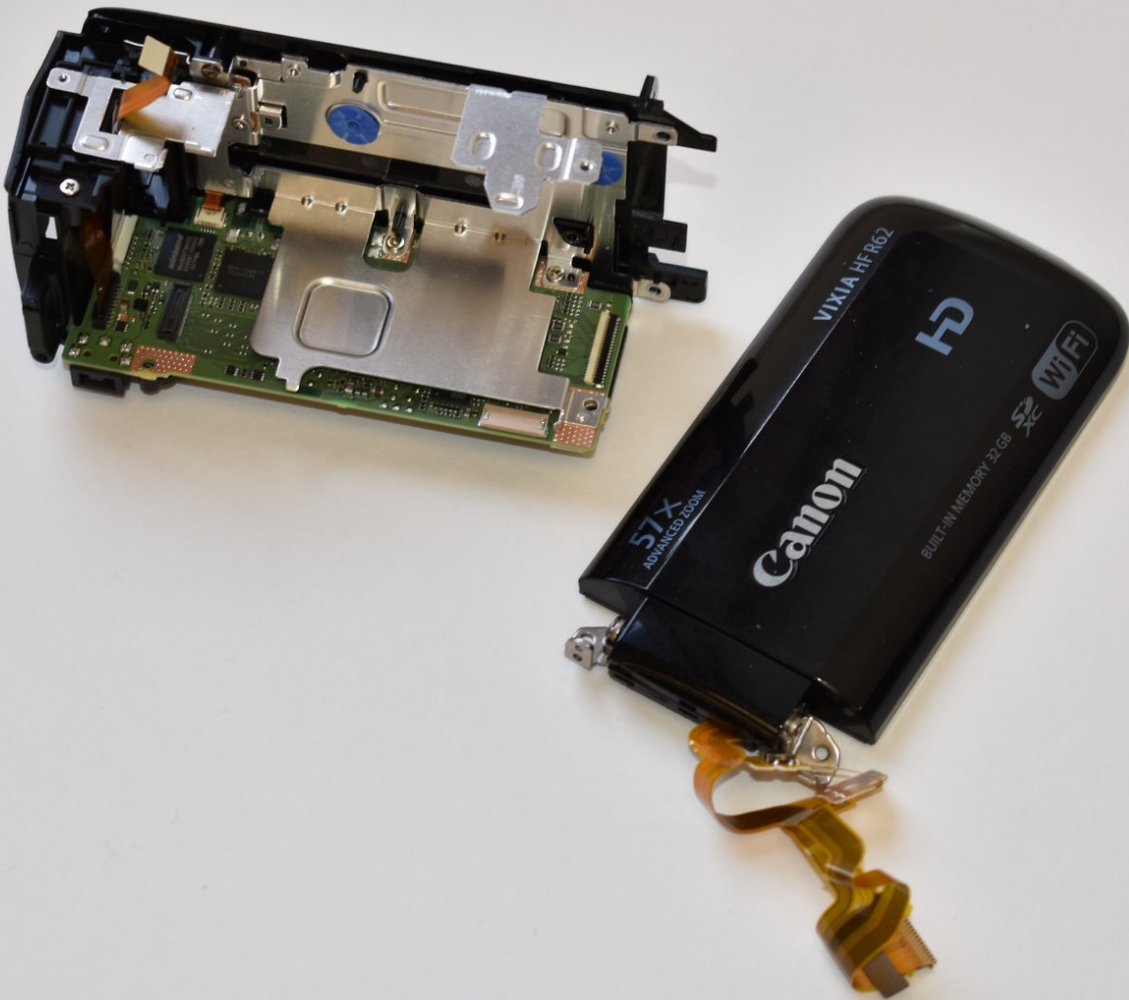




Canon Vixia HF R62 Display Panel Replacement

Replace the LCD display panel of your Canon Vixia HF R62 camcorder.

Written By: Patrick Bennett



INTRODUCTION

This guide will show you how to remove and replace the LCD display panel of the Vixia HF R62.



TOOLS:

- [Phillips #000 Screwdriver](#) (1)
 - [Tweezers](#) (1)
 - [Spudger](#) (1)
-

Step 1 — Outer Shell



- Remove the strap by undoing the Velcro and pulling it through the thread points.
- Remove the external battery pack by pressing down on the slide release and sliding it out.

Step 2



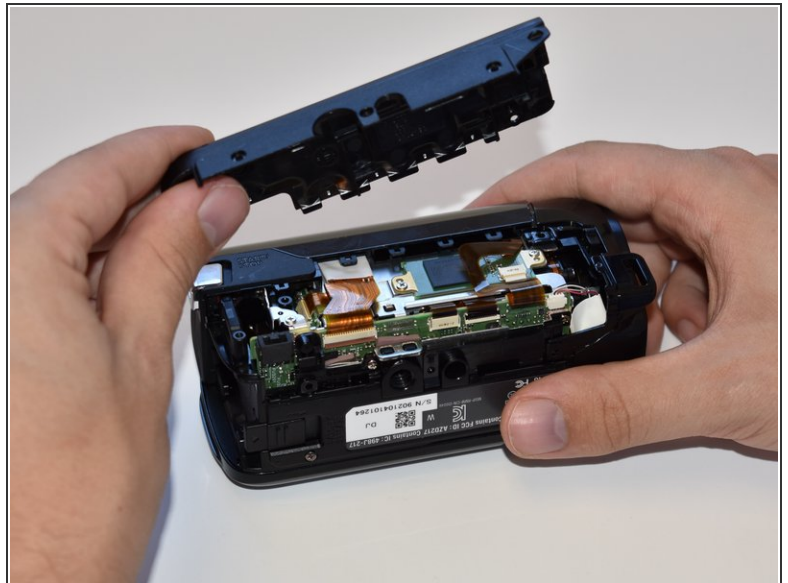
- Remove the three 5mm Phillips #000 screws on the bottom of the device.

Step 3



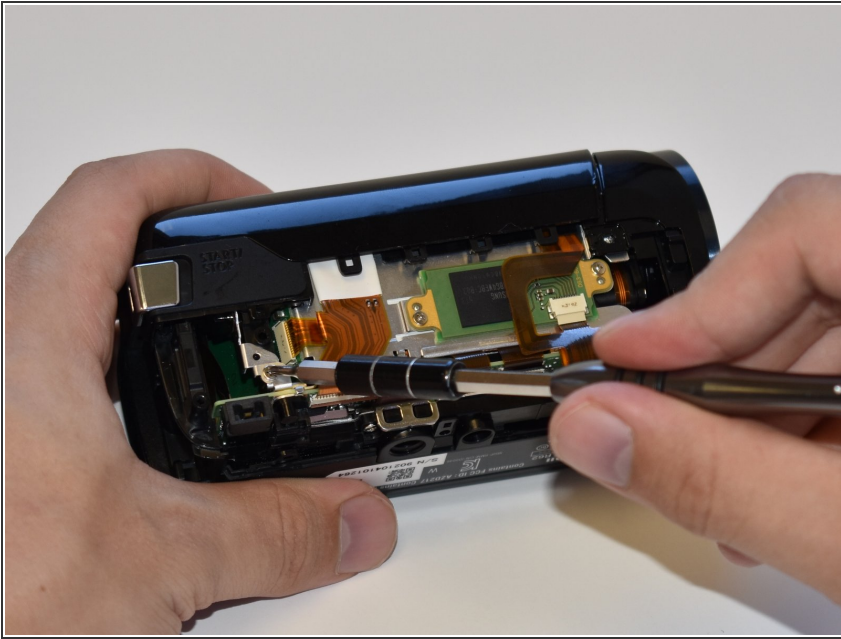
- On the side of the device, remove the following Phillips #000 screws:
 - One 3mm screw
 - One 5mm screw

Step 4



- Remove the panel opposite the display by pulling up perpendicular to the side.

Step 5



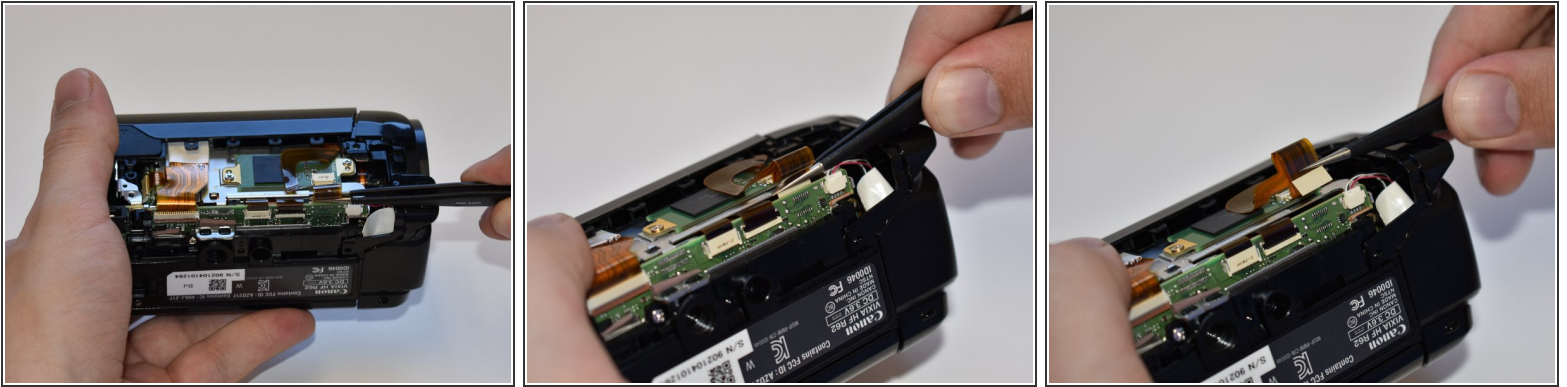
- Remove the 4mm Phillips #000 screw that was exposed after taking off the side panel.

Step 6



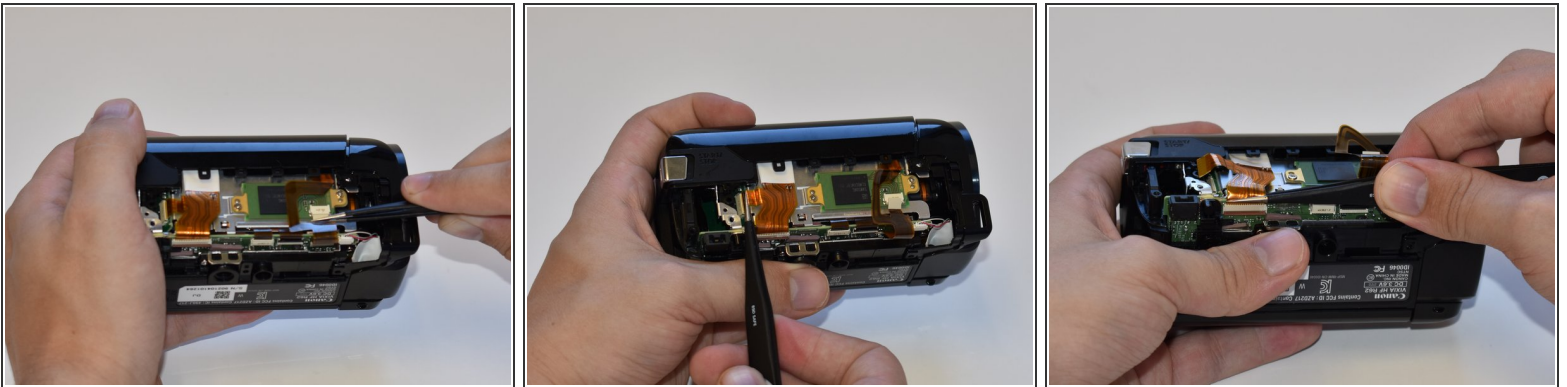
- Remove the three 4mm Phillips #000 screws shown.
- ⓘ There will be foam covers protecting some or all of these screws. These will need to be removed before you will be able to unscrew them.

Step 7



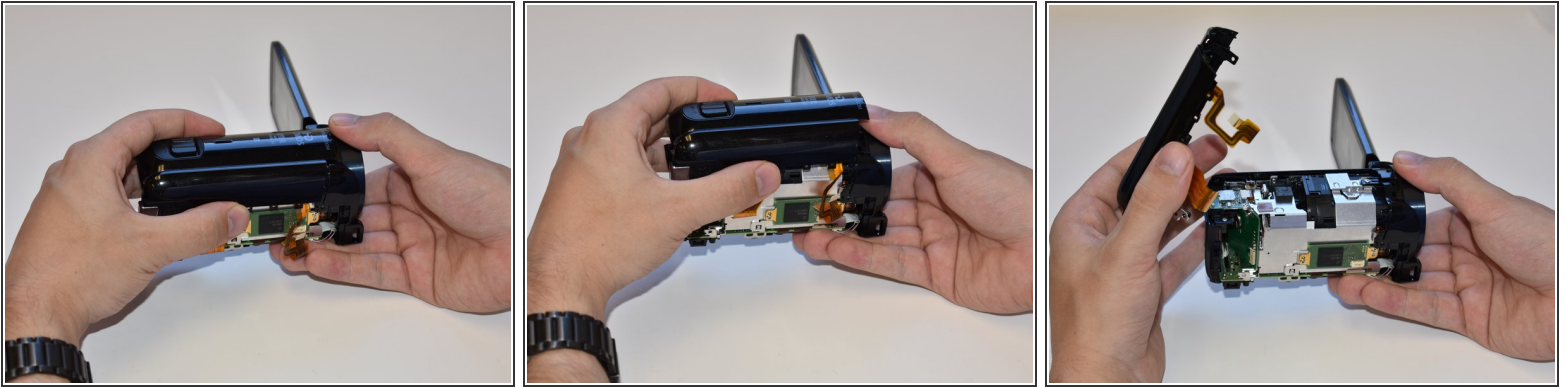
- Using tweezers, disconnect this ribbon cable by pulling straight out.

Step 8



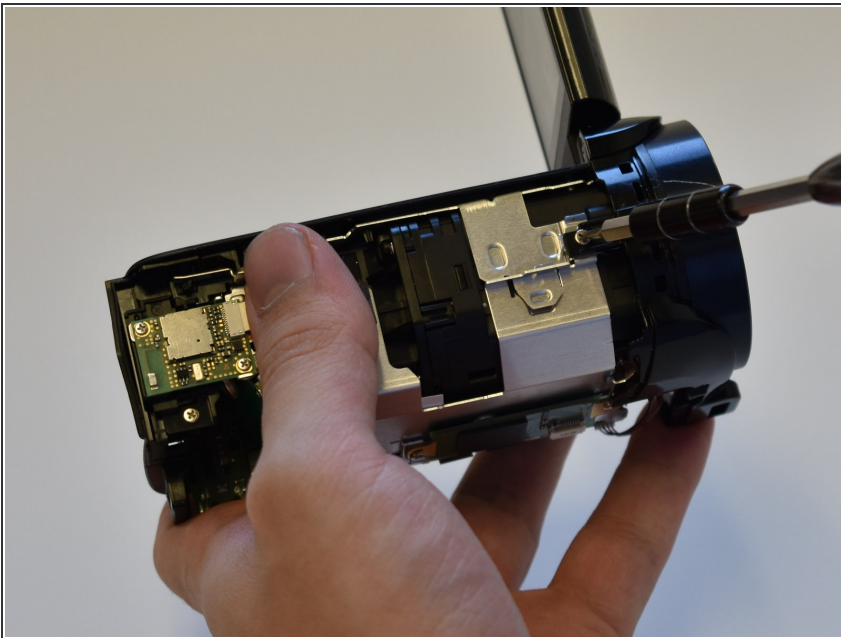
- Repeat step seven (7) for the remaining three wires shown.

Step 9



- Grasp the top of the camera and pull straight up to remove the top panel.

Step 10 — Lens



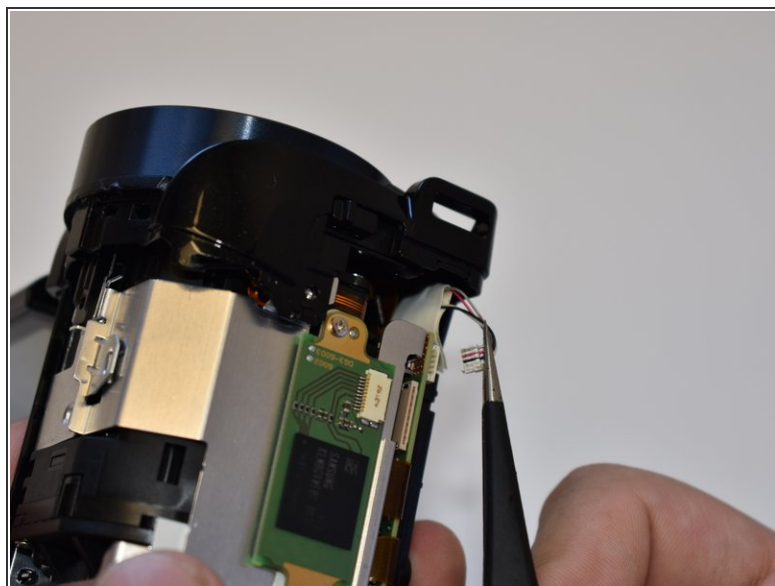
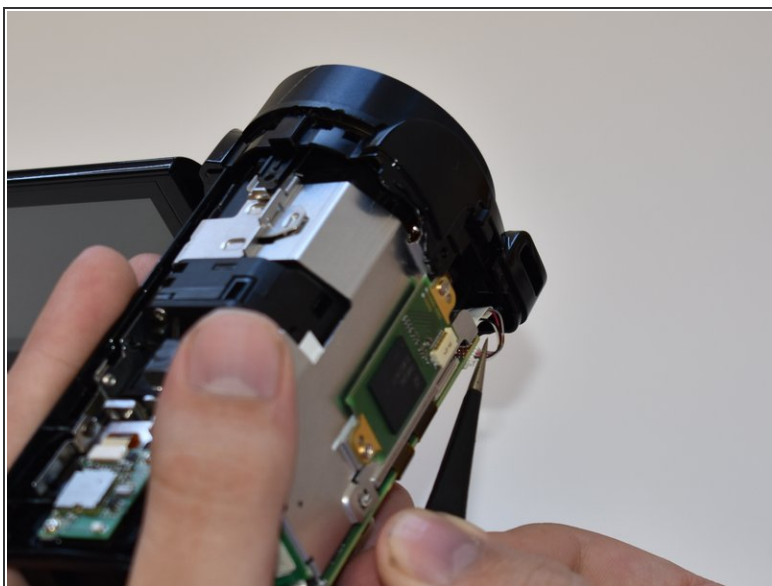
- Remove the 5mm Phillips #000 screw on top of the inner case.

Step 11



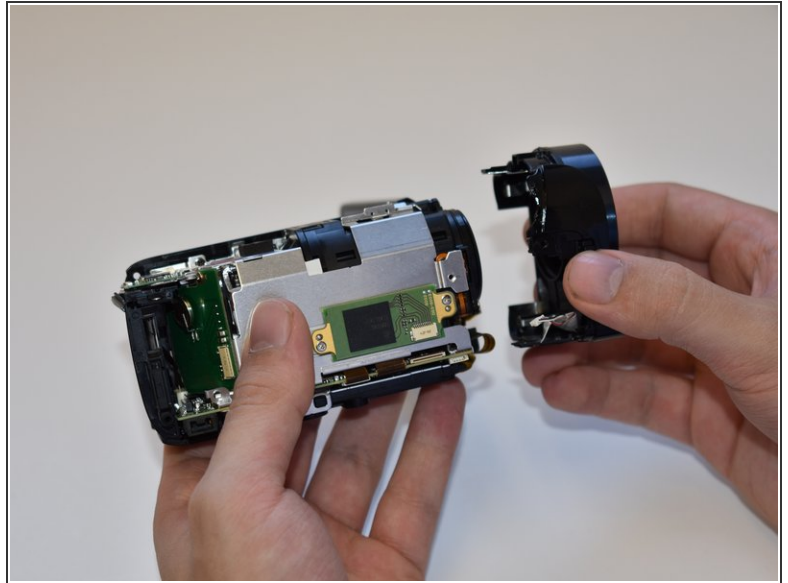
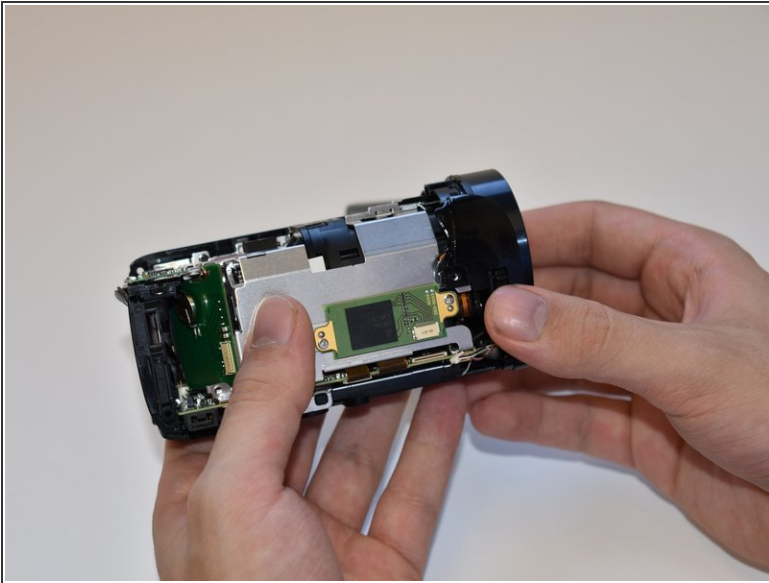
- Remove the two 5mm Phillips #000 screws near the display panel.

Step 12



- Disconnect the small bundled cable connector on the side of the lens cover by pulling it straight out.

Step 13



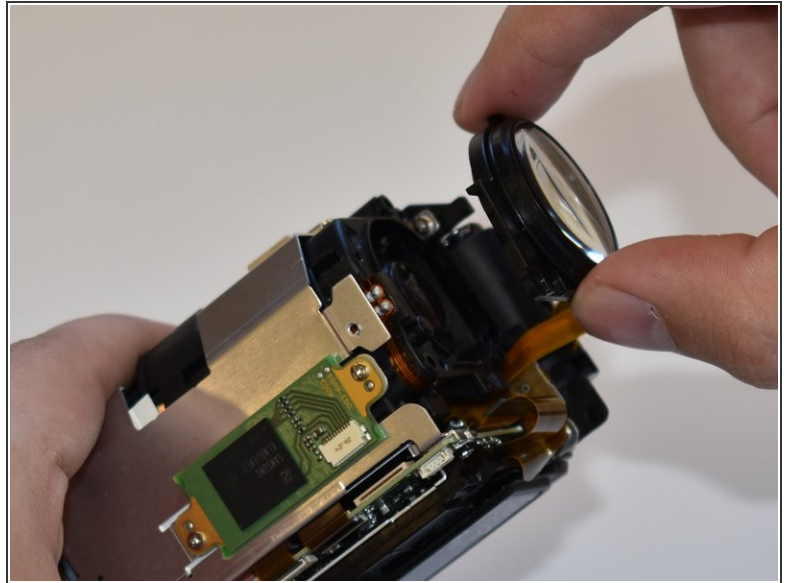
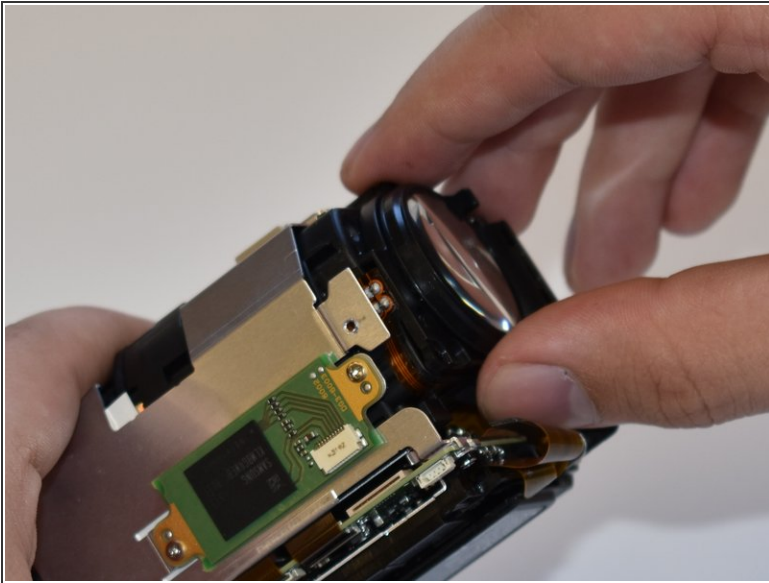
- Remove the lens cover by pulling straight away from the body.

Step 14



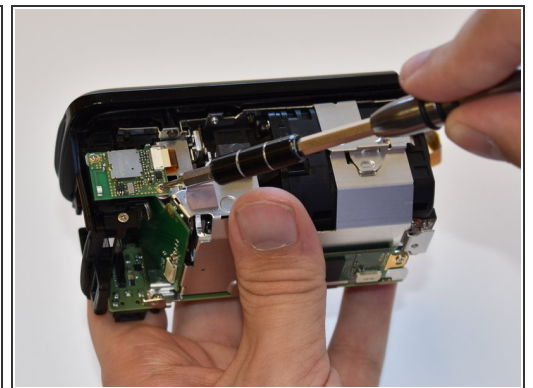
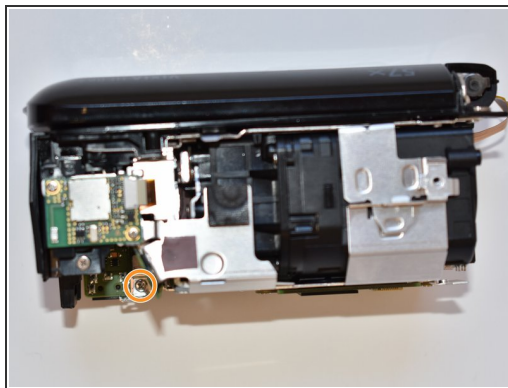
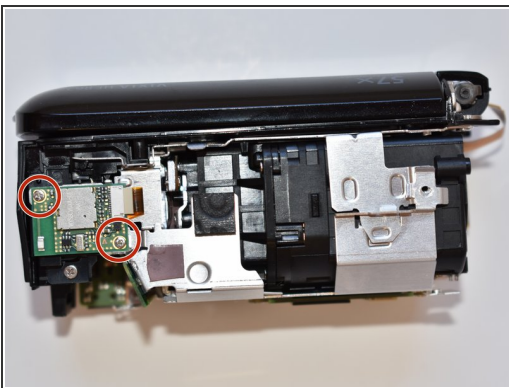
- Remove the three 6mm Phillips #000 screws shown.

Step 15



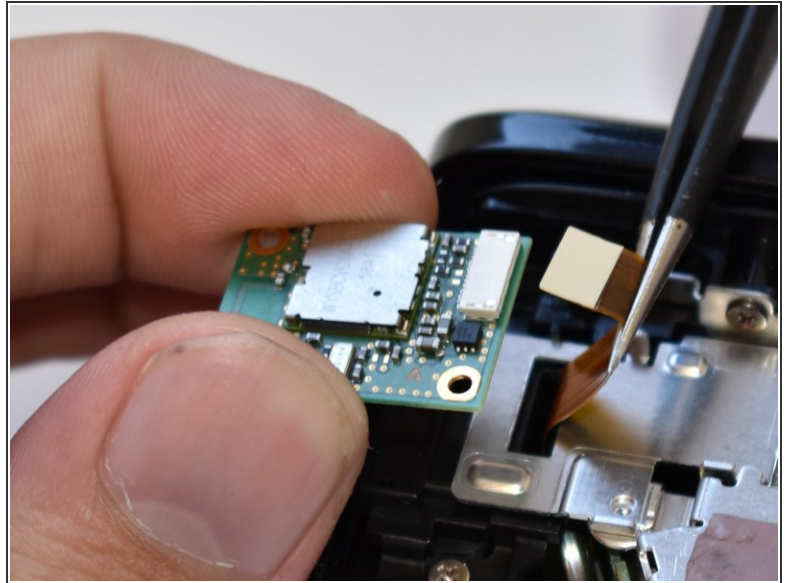
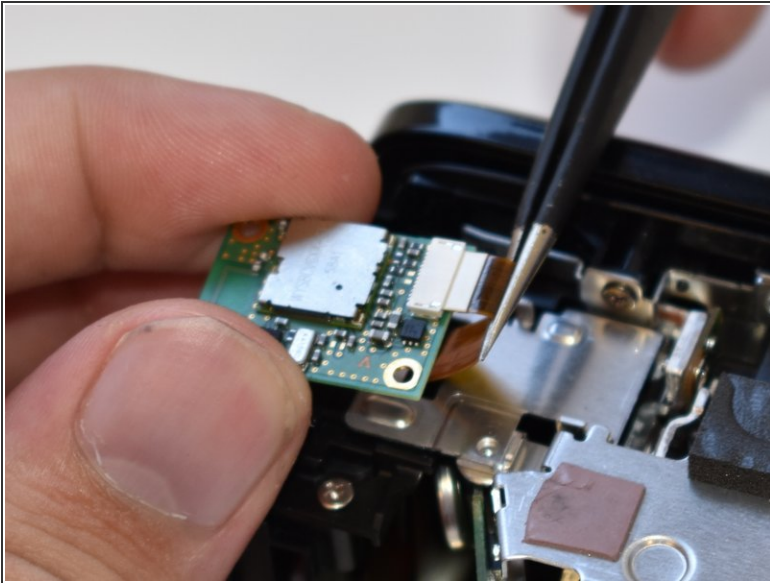
- Remove the lens by pulling straight away from the main body.
- ⓘ Be aware of the small rubber gasket around the lens as it may come loose.

Step 16 — Internal Battery and SD Card Reader



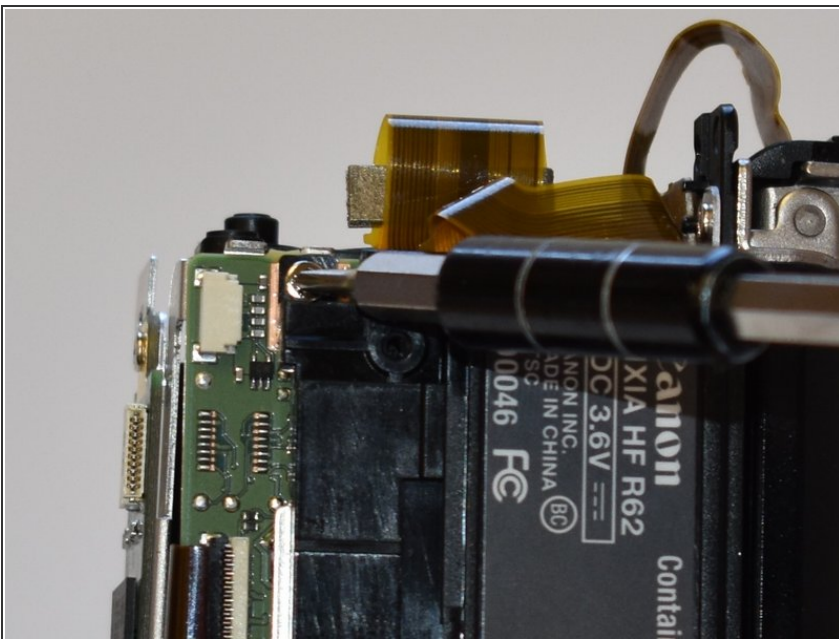
- Remove the two 3mm Phillips #000 screws.
- Remove the 4mm Phillips #000 screw.

Step 17



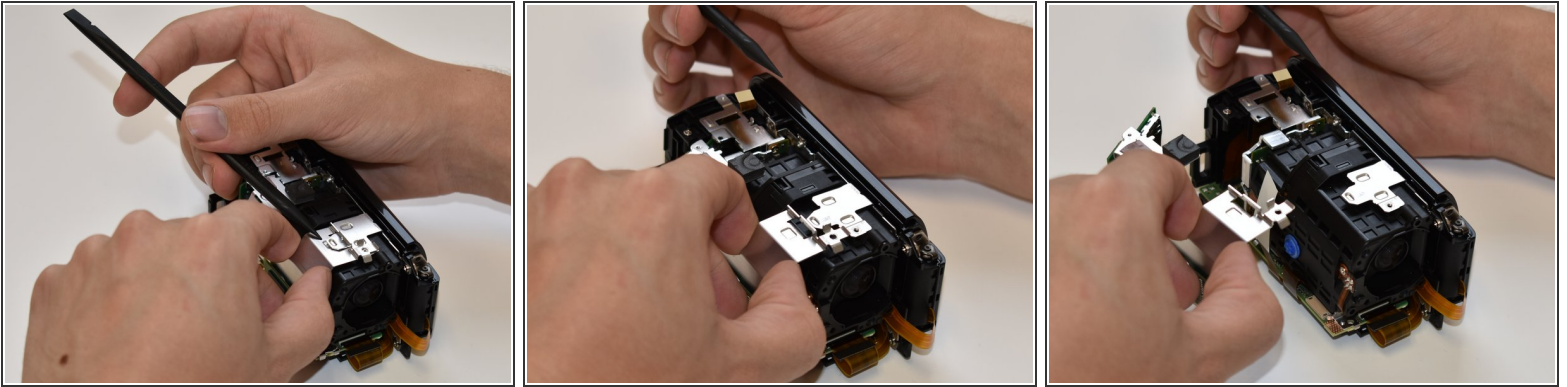
- Disconnect the ribbon cable shown.

Step 18



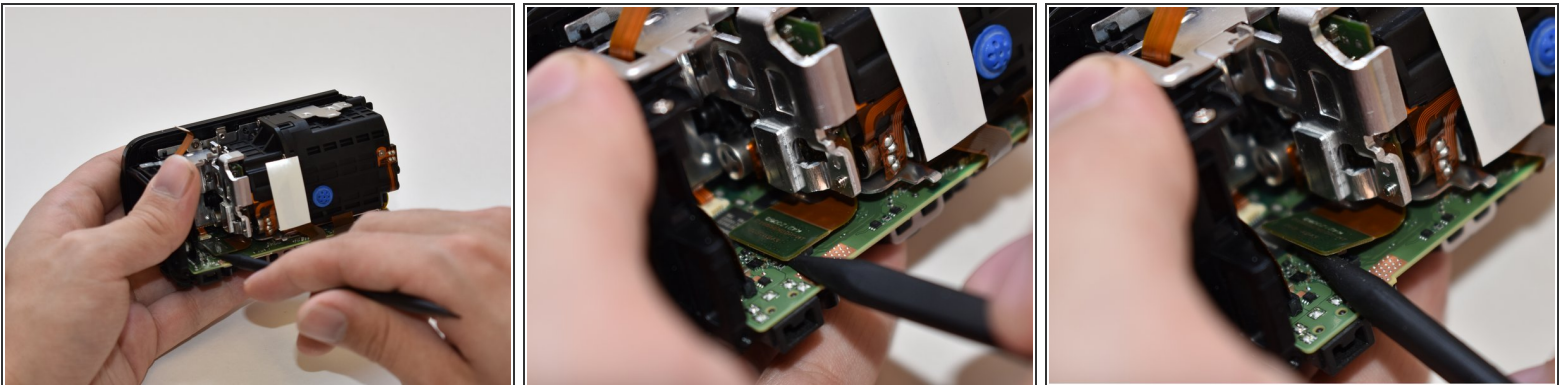
- Remove the 4mm Phillips #000 screw at the bottom of the camera.

Step 19



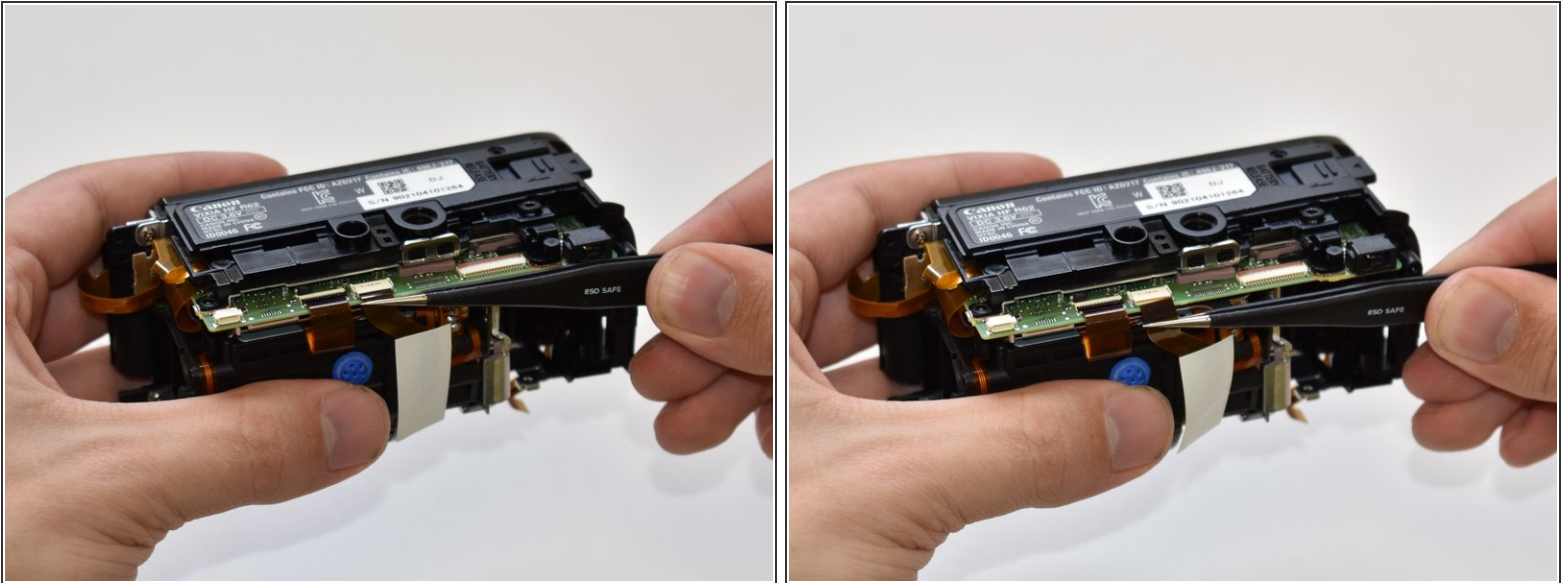
- Place the spudger under the tab shown.
- While prying the tab up with the spudger, pull the case away.

Step 20 — Central Capturing Unit



- Using a spudger, disconnect the ribbon cable connector from the PC board shown in the picture.

Step 21



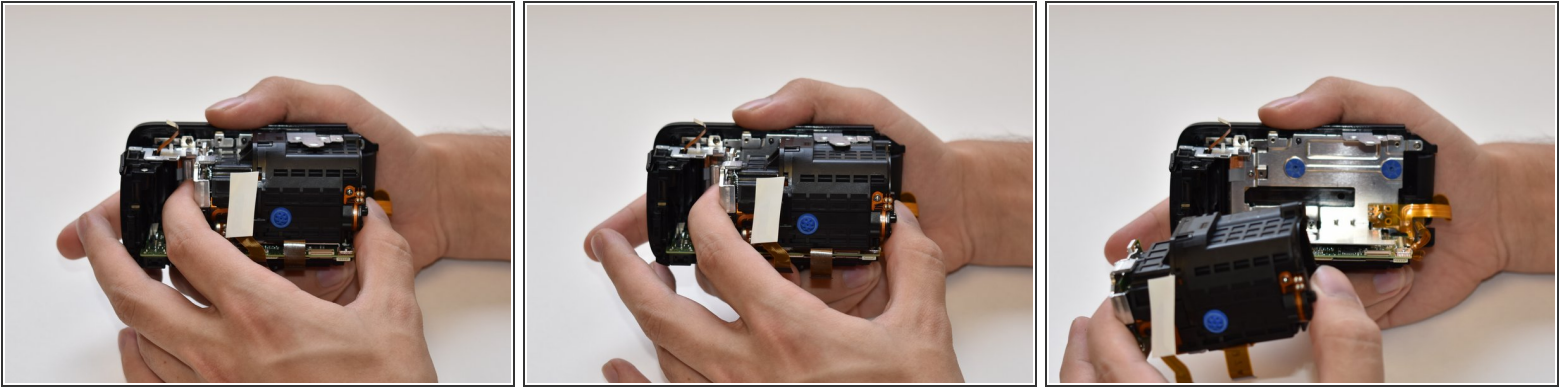
- Using tweezers, disconnect the ribbon cable shown in the picture by pulling straight out.

Step 22



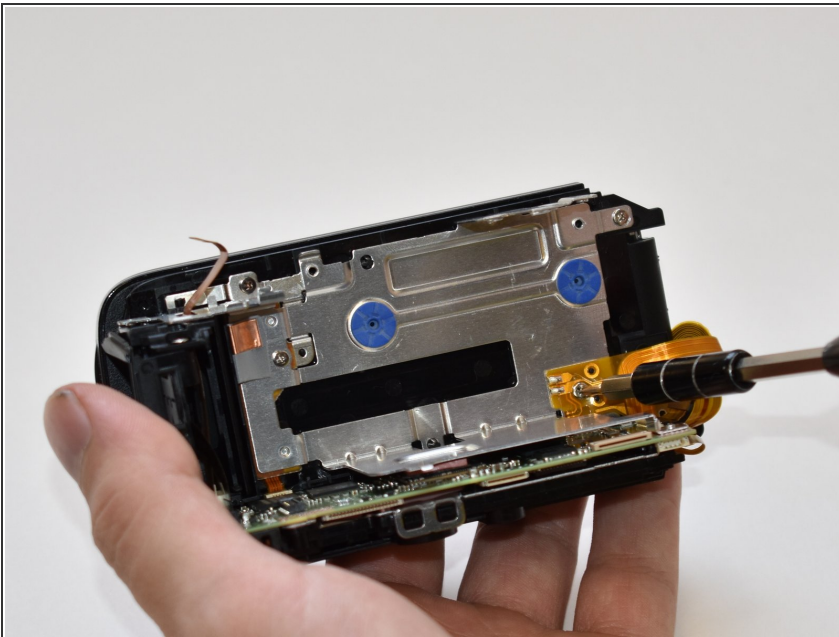
- Using a spudger, gently pry up the top tab on the ZIF connector. The wire will now disconnect with no force needed.
- ☑ When reassembling you will need to place the ribbon wire tightly against the tab in order to properly secure it.

Step 23



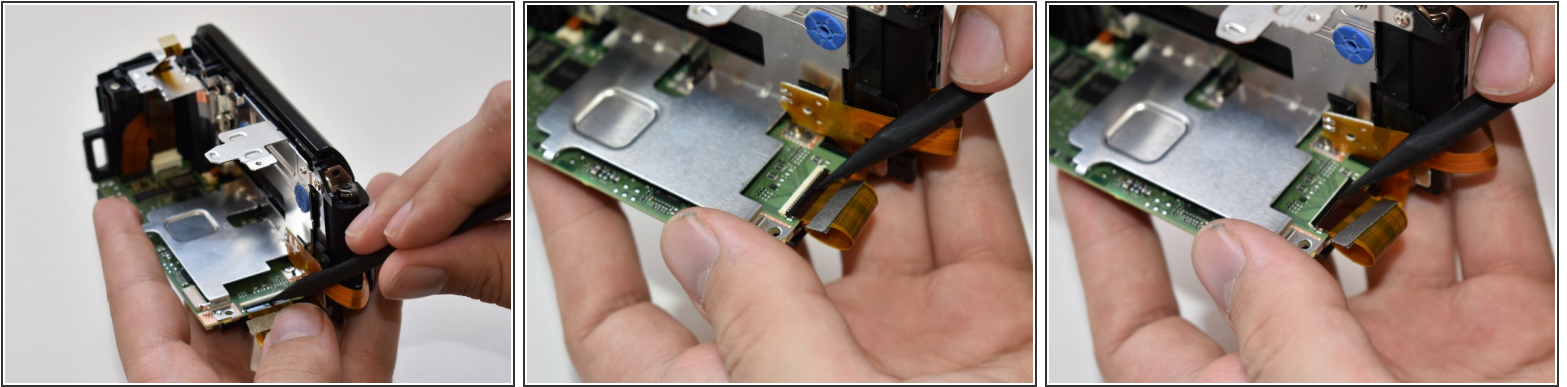
- Using your fingers, firmly grasp both ends of the capturing device and gently pull the assembly straight out.

Step 24 — Display Panel



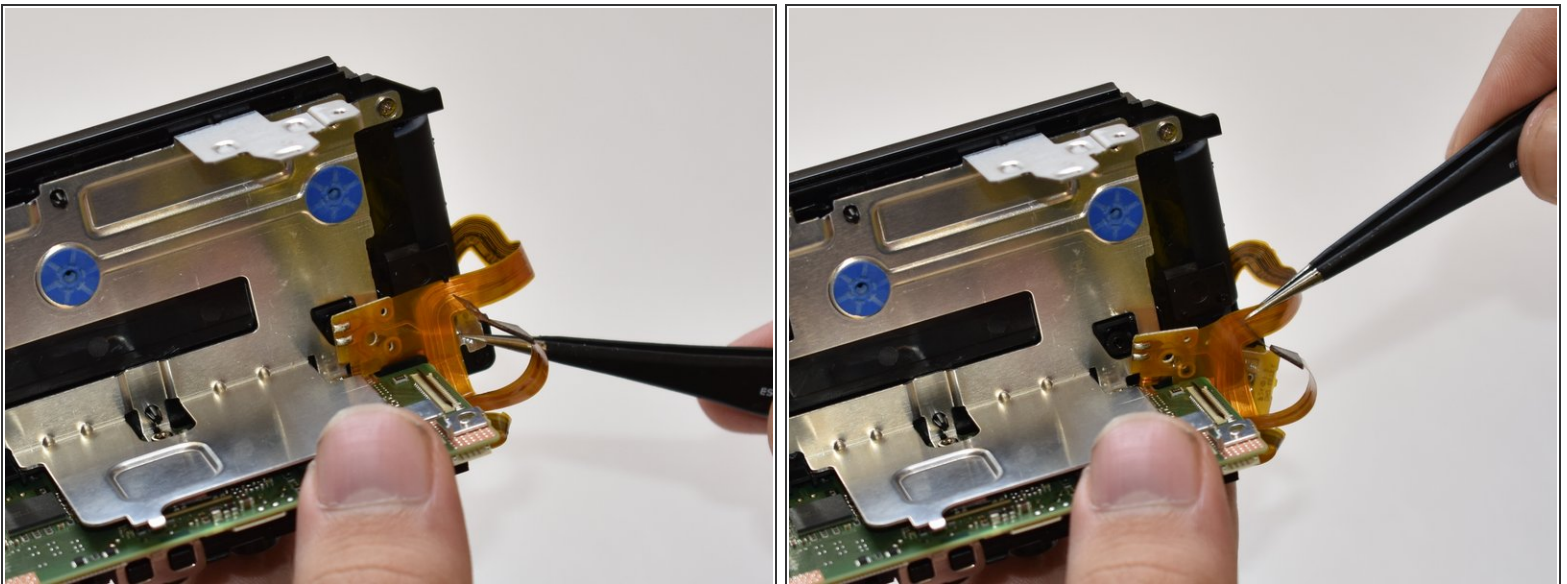
- Remove the 3mm Phillips #000 screw holding the display's ribbon wire to the casing.

Step 25



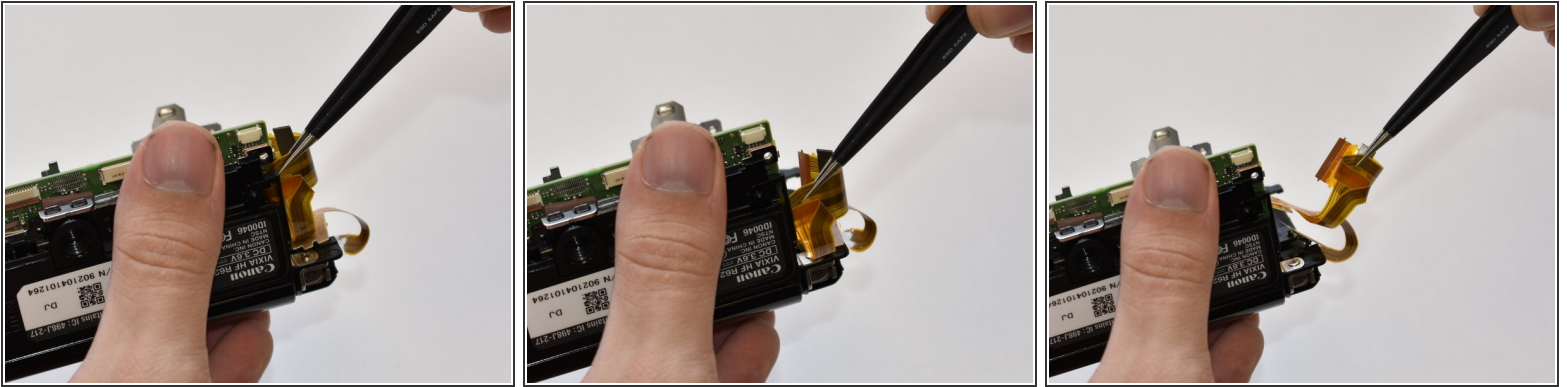
- Undo the ZIF connector from the motherboard using a plastic spudger. Use the spudger to pry the small tab on top of the ZIF connector and the ribbon cable will fall free.
- ☑ When reassembling, you will need to place the ribbon cable tightly against the tab in order to properly secure it.

Step 26



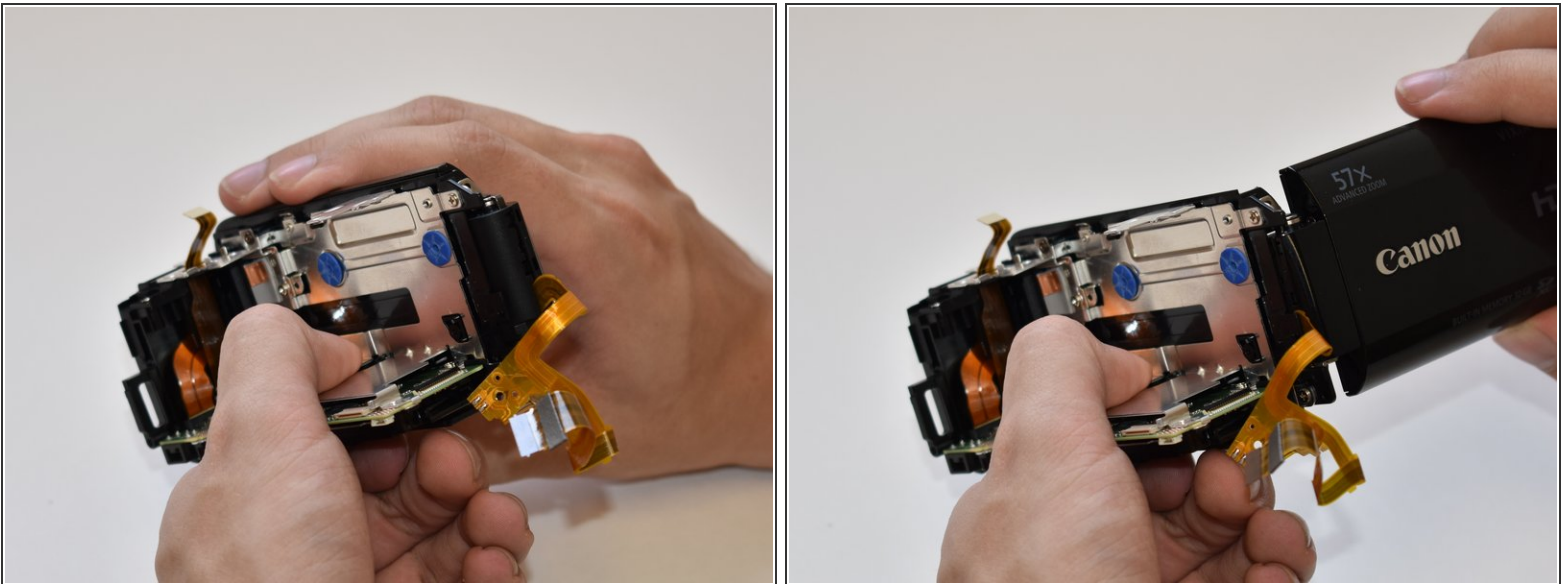
- There is a small component of the ribbon cable clipped to the casing. Remove this by pulling it away from the casing with tweezers.
- ⓘ Some of the ribbon may become entangled in the clips that held the component. Ensure they are untangled before the display is removed to avoid damage.


Step 27



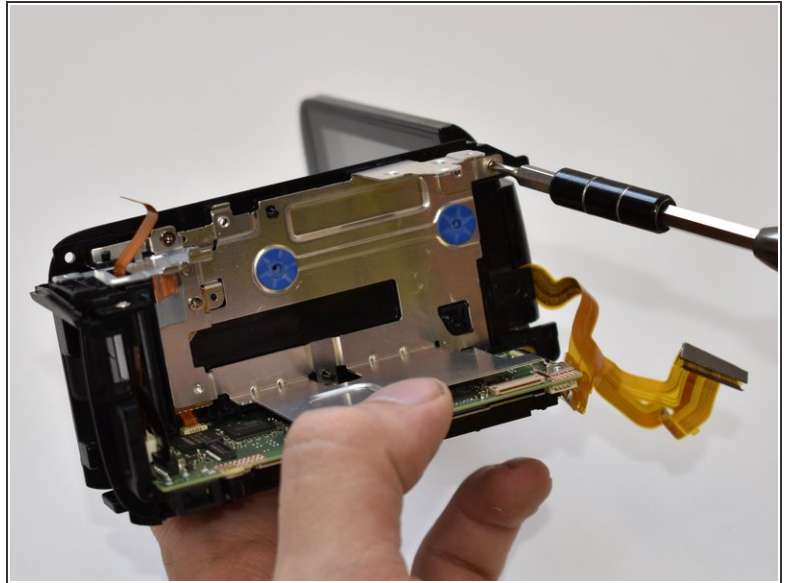
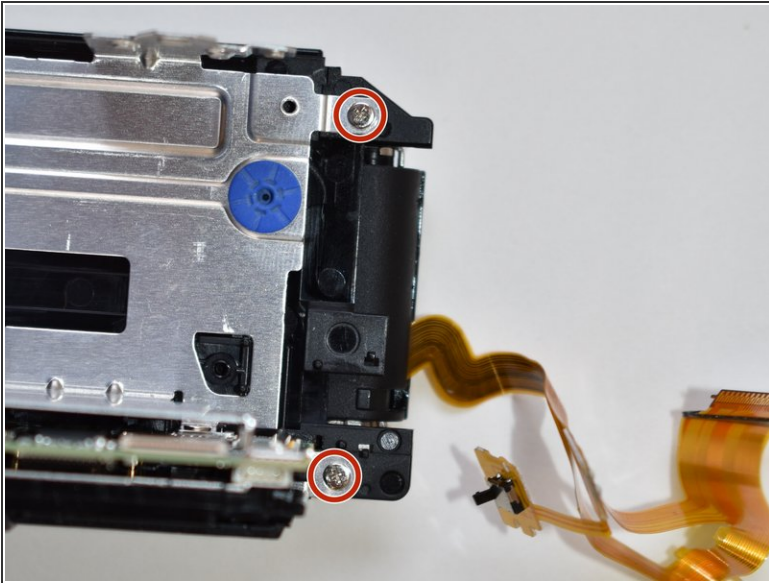
- The ribbon cable is also looped around a piece of the casing under the motherboard. Unfasten this cable with tweezers by sliding down and then pulling out.

Step 28



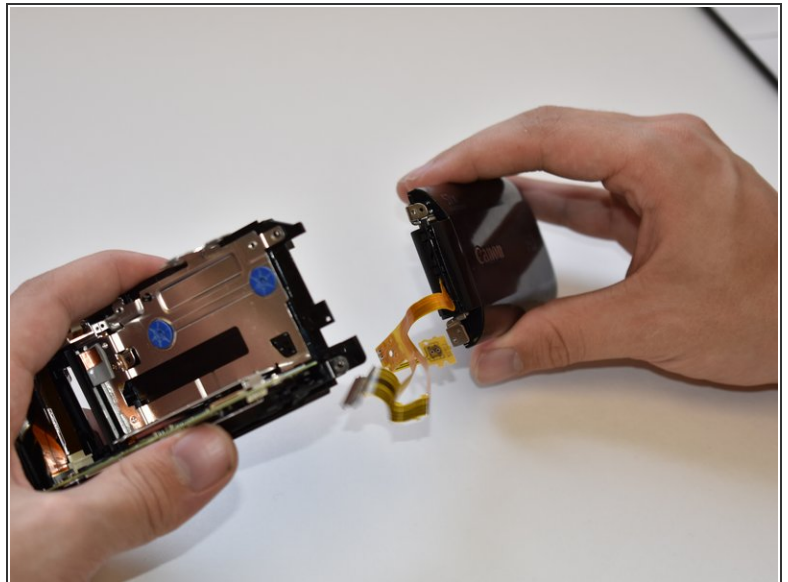
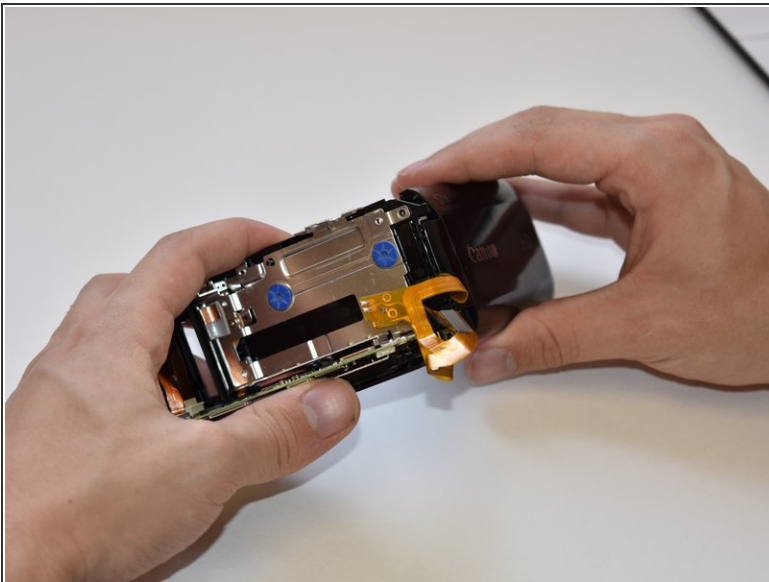
- Open the display panel.
-  This will help during the reassembly as one of the hinges locks in place and is difficult to reassemble if in the closed position.

Step 29



- Remove the two 3mm Phillips #000 screws connecting to the display panel's hinges.

Step 30



- Remove the display panel by pulling the display straight away from the body.

To reassemble your device, follow these instructions in reverse order.