



Written By: Caleb DesJardins



INTRODUCTION

This guide can be used if the optical drive is malfunctioning. Removing the optical drive is also required before the main cover can be opened up.

TOOLS:

- [Phillips #0 Screwdriver](#) (1)
-

Step 1 — Back Access Panel



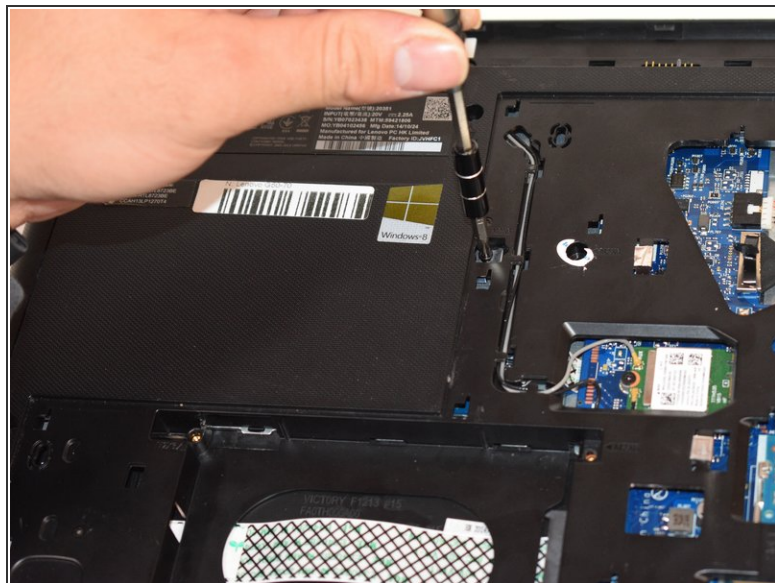
- Remove the three 6mm Phillips #0 screws holding the back access panel on.

Step 2



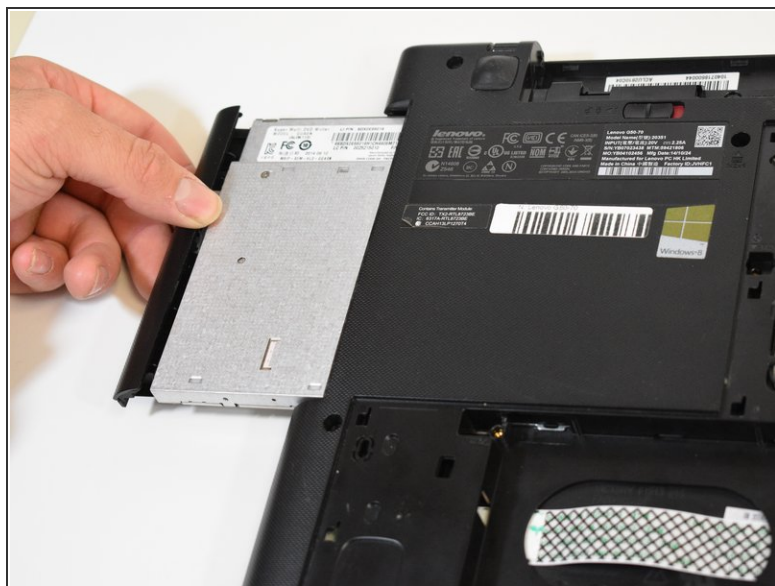
- Slide the cover toward you to unlatch it.
- The edge of the panel will slide away from the laptop so it can be lifted.

Step 3 — Optical Drive



- Remove one 6mm Phillips #0 screw holding in the optical drive.

Step 4



- Grab the optical drive by the edge and pull it out.

To reassemble your device, follow these instructions in reverse order.