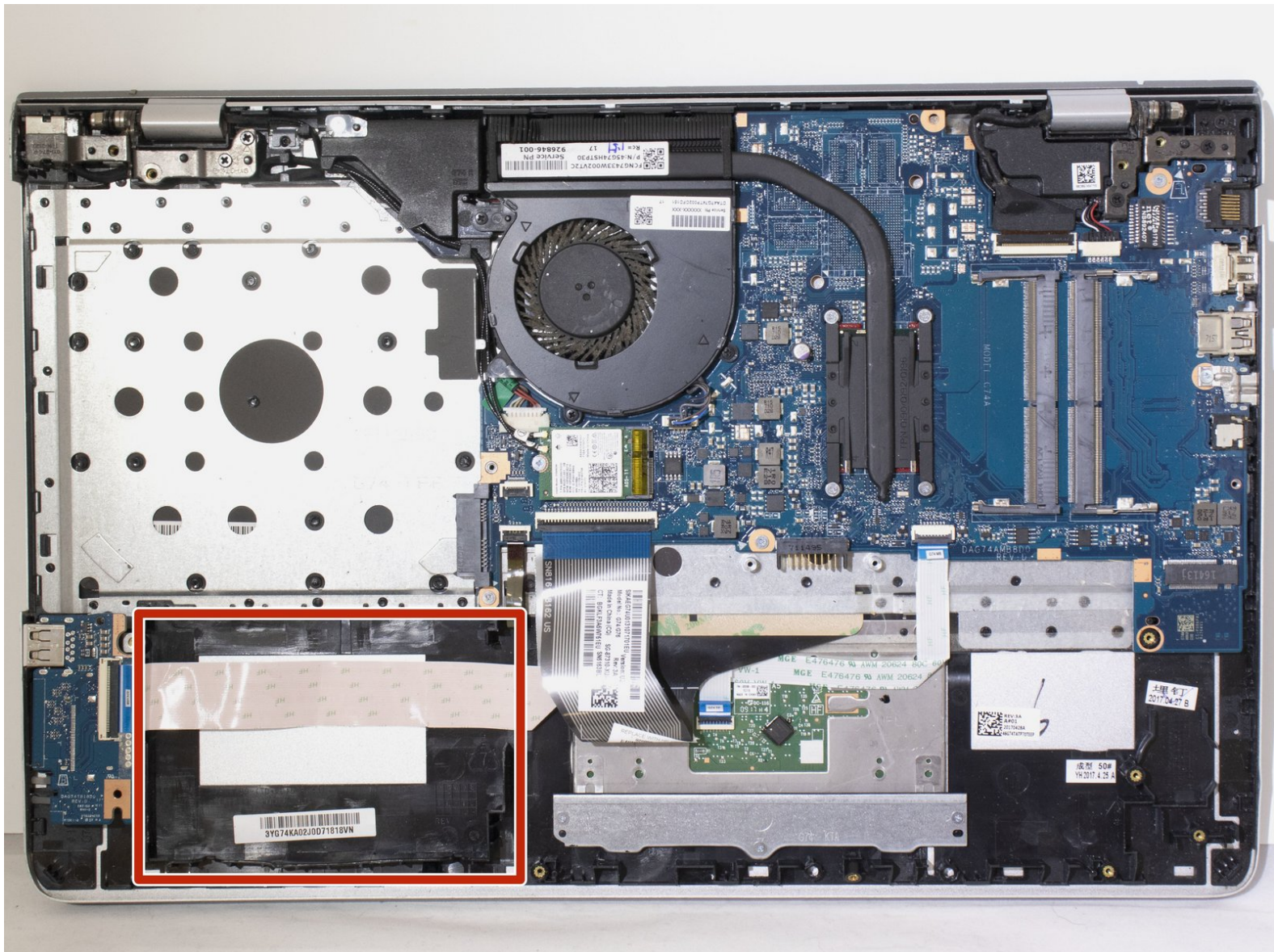




HP Pavilion 15-cc023cl Hard Drive Replacement

Replacing the hard drive to your unresponsive device.

Written By: Stephanie Henry



INTRODUCTION

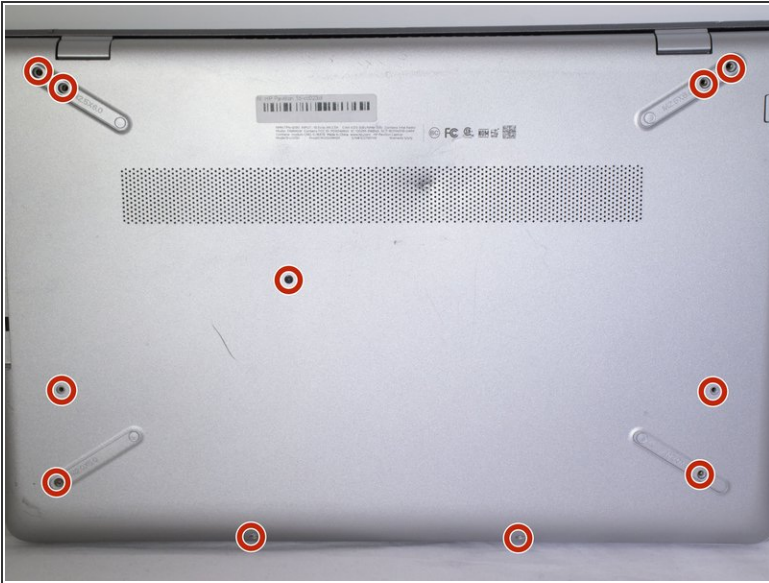
If your computer will not turn on and you know that this is due to a defective hard drive, this guide will take you through the steps of removing it on the HP-Pavilion 15-cc023cl.



TOOLS:

- [Phillips #000 Screwdriver](#) (1)
 - [iFixit Opening Tools](#) (1)
 - [Spudger](#) (1)
-

Step 1 — Battery



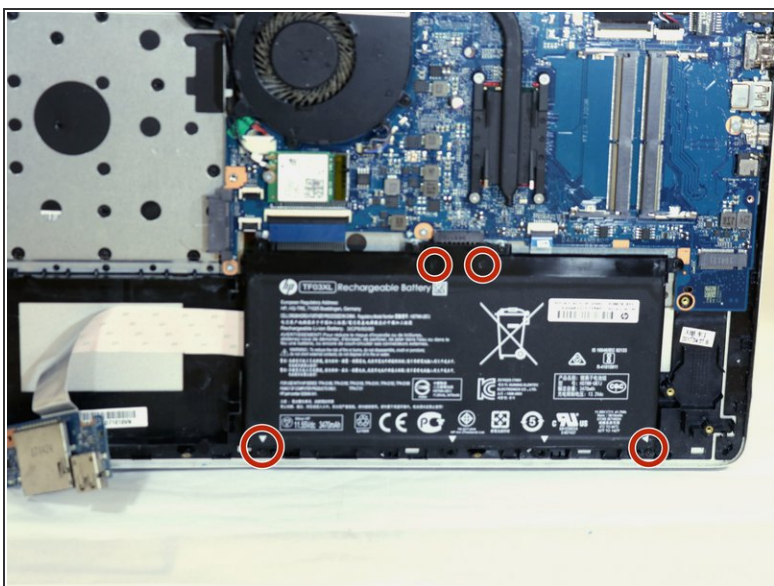
- Use a PH000 screwdriver to unscrew the eleven 4mm Phillip head screws located on the back panel.

Step 2



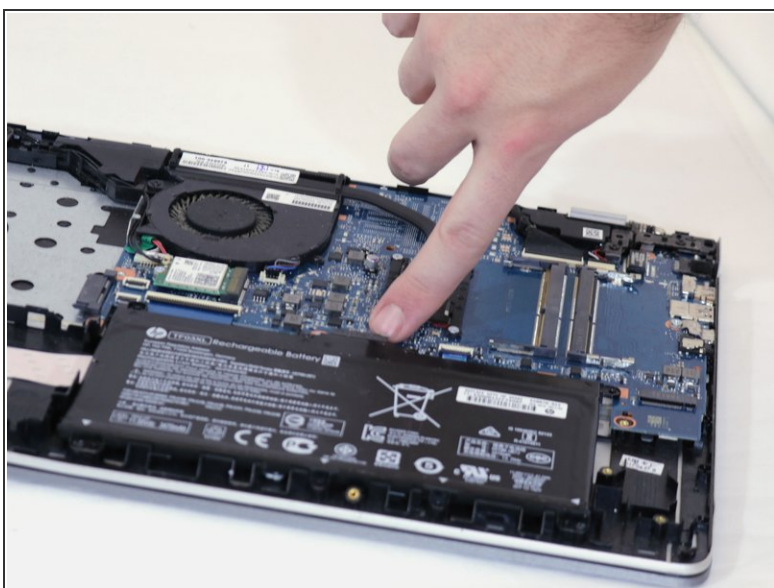
- Using the iFixit opening tool, pry open and remove the back cover of the laptop.
- ⚠ Be gentle when applying force to the cover.

Step 3



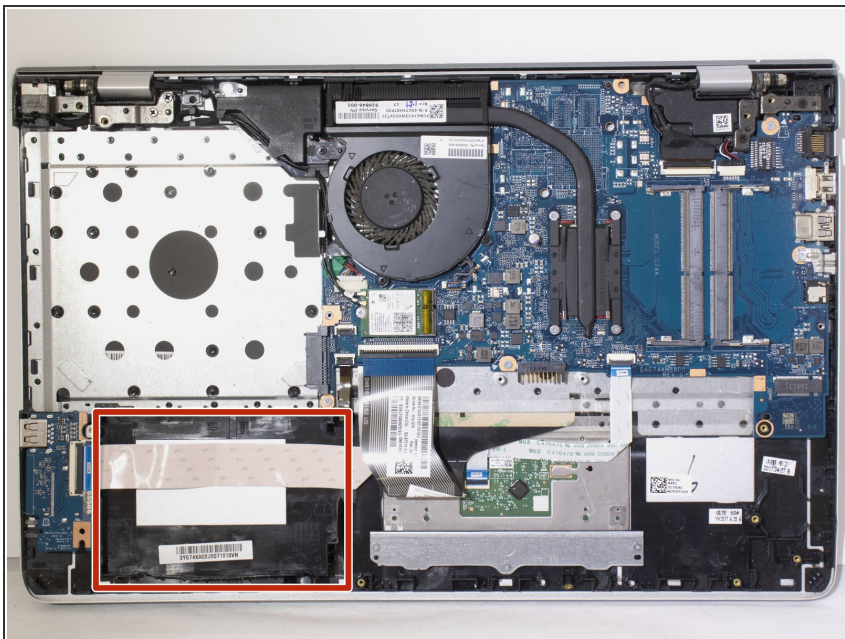
- Use a PH000 screwdriver to unscrew the four 3.5mm Philips head screws located on the battery.

Step 4



- Disconnect the port connecting the battery and the motherboard and then remove.

Step 5 — Hard Drive



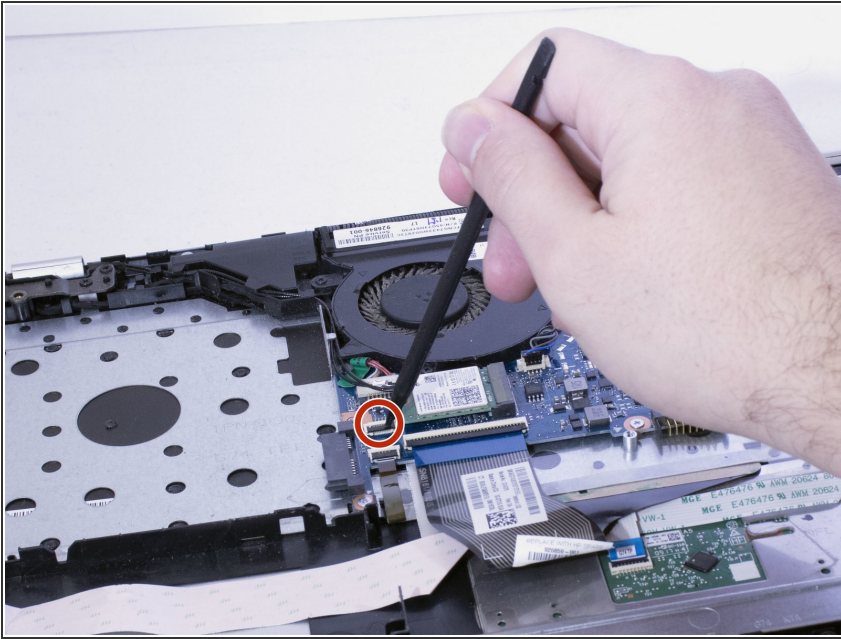
- Use a spudger to lift the latch that holds the hard drive cable in place.

Step 6



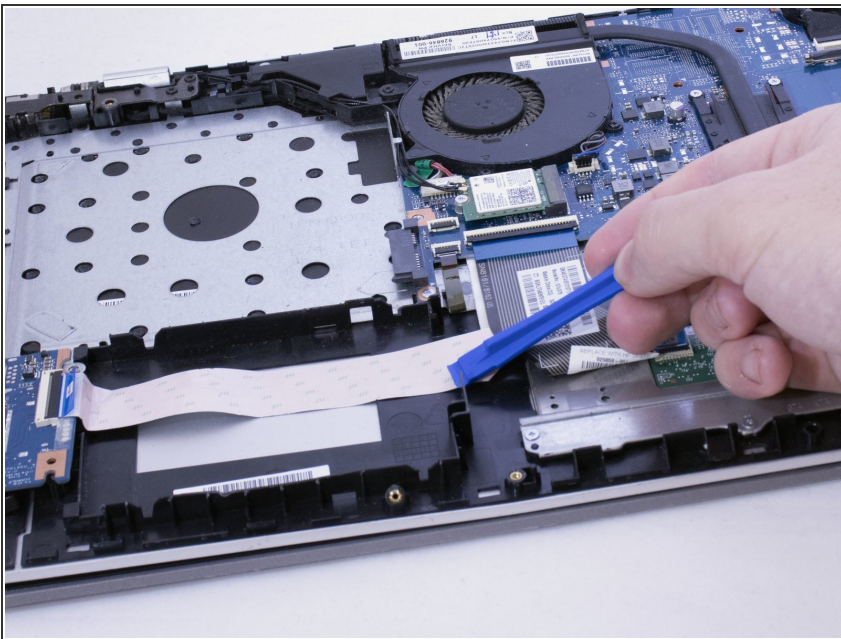
- Use a plastic opening tool to pry the hard drive out.

Step 7



- Disconnect the hard drive cable.

Step 8



- Lift the plastic wedges up on both sides of the hard drive.

To reassemble your device, follow these instructions in reverse order.