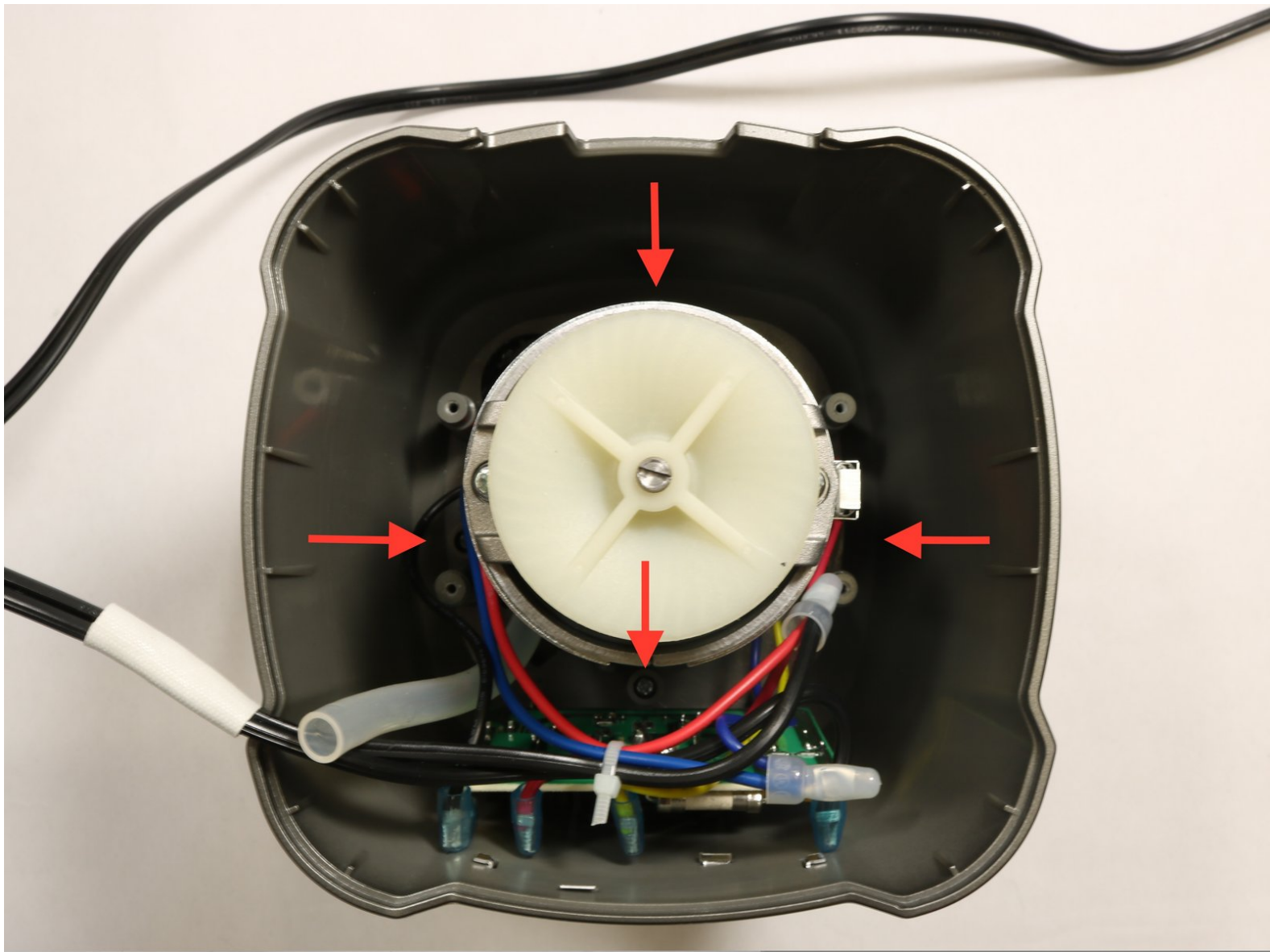




Cuisinart CPB-380 Motor Replacement

There can be any number of reasons for why a...

Written By: William Hesse



INTRODUCTION

There can be any number of reasons for why a blender motor could stop working. Liquid and food could have seized the blade, causing the motor to overheat, or dull blades could have caused the motor to work too hard and burn out. Whatever the case, this troubleshooting guide will give you step-by-step instructions on how to replace the compact 500 watt motor of your CPB-380 Cuisinart Hurricane Compact Juicing Blender.

Quick note:

In the case that the motor has overheated, you may not need to replace it completely. The resettable fuse, which protects the motor due to overloading, may have been tripped. Try unplugging the blender and letting it cool for at least 15 minutes.

You can read more about resetting your blender in the included instruction booklet in the packaging or here: [Cuisinart CPB-380 Instruction Booklet](#)

If your CPB-380 Blender doesn't reset then begin at step 1 of this guide.



TOOLS:

- [Phillips #2 Screwdriver](#) (1)
 - [Metal Spudger](#) (1)
 - [Utility Scissors](#) (1)
-

Step 1 — Cuisinart CPB-380 Disassembly



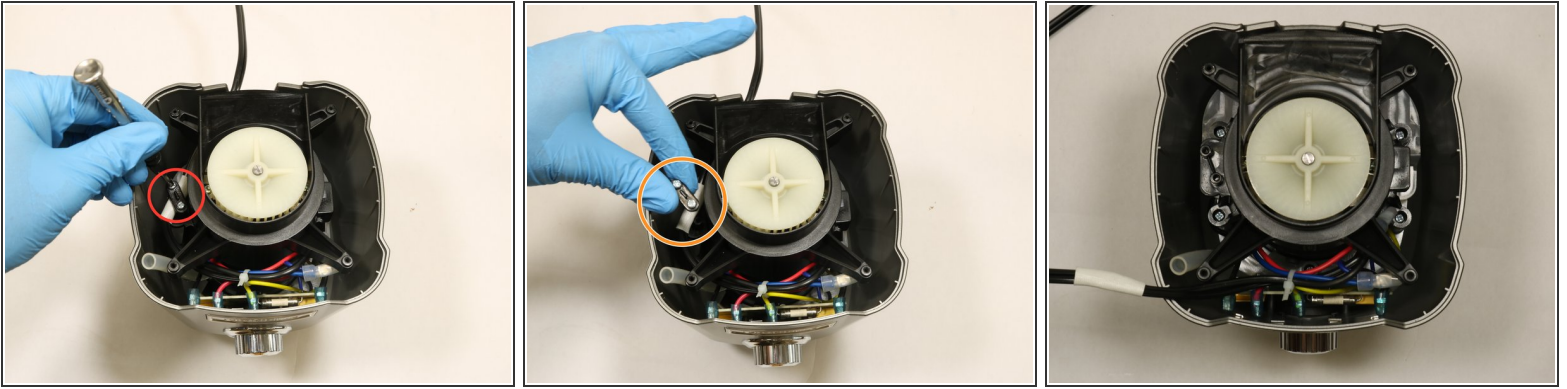
- Turn the device upside down.
- Remove all four rubber feet by prying them out using the metal spudger.
- Once the rubber feet have been removed, use the Phillips #2 screwdriver to remove all four 13mm screws.

Step 2



- Remove the base from the body of the blender.

Step 3



- Remove the two 11mm screws securing the power cord using the Phillips #2 screwdriver.
- Gently move the wire aside so that it is not in the way.

Step 4



- Remove the four 13mm screws that hold the black plastic cover using the Phillips #2 screwdriver.
- Gently remove the black cover.
- Underneath, you will see a clear plastic cover that should be removed as well.

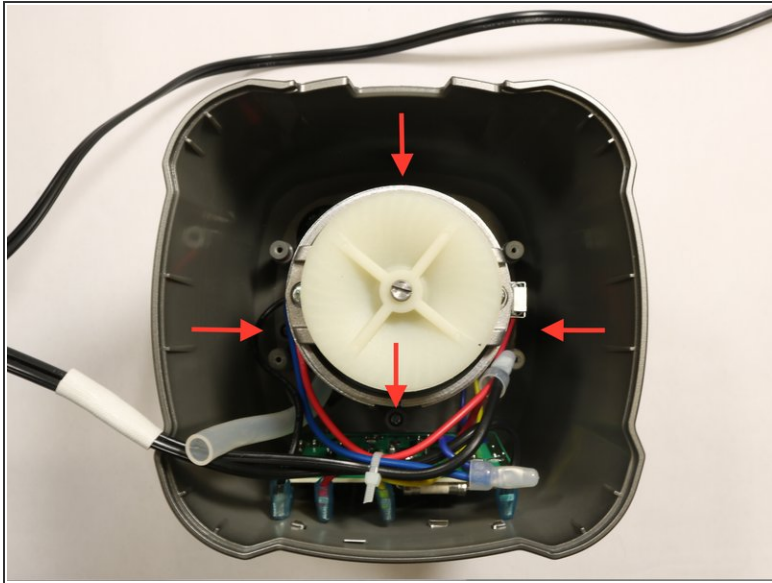
Step 5



- Cut the zip tie that holds the black, blue, red, and yellow wires together.

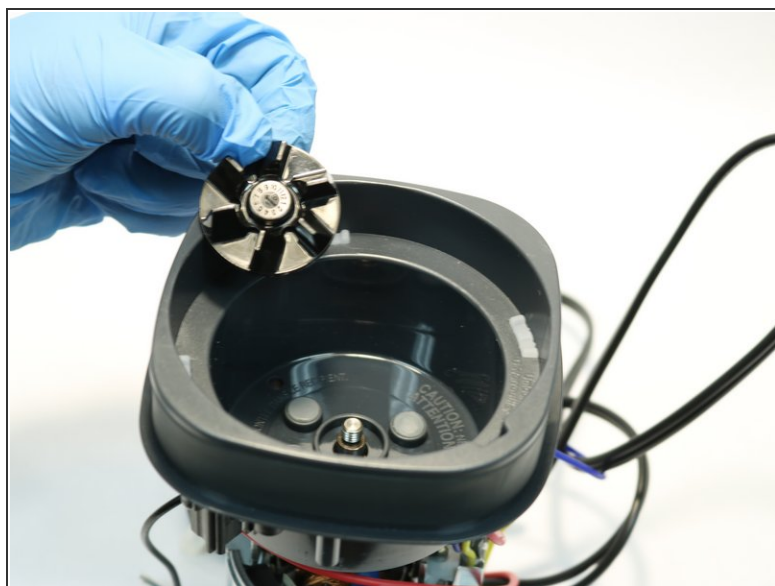
⚠ Take care not to cut the wires.

Step 6 — Motor



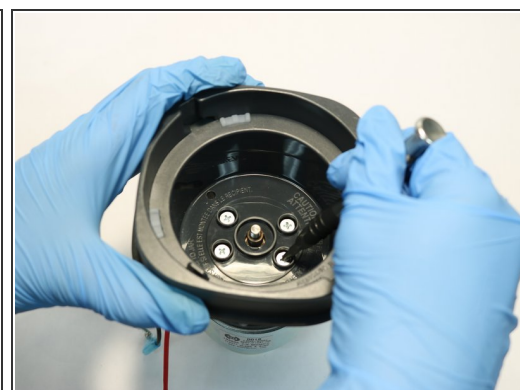
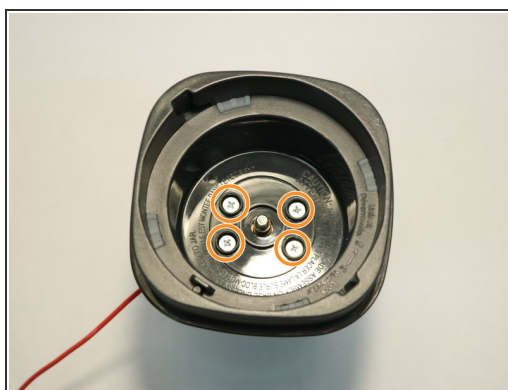
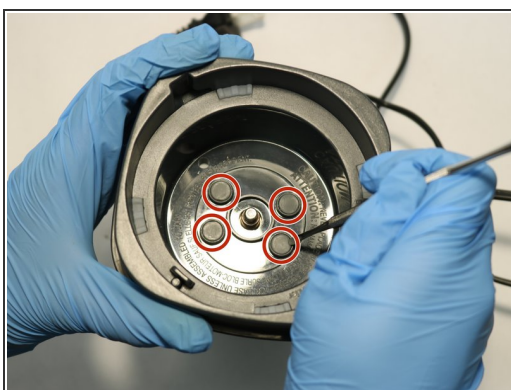
- Remove the four 13mm screws holding down the frame located at the bottom of the inverted blender using the Phillips #2 screwdriver.
- Remove frame.

Step 7



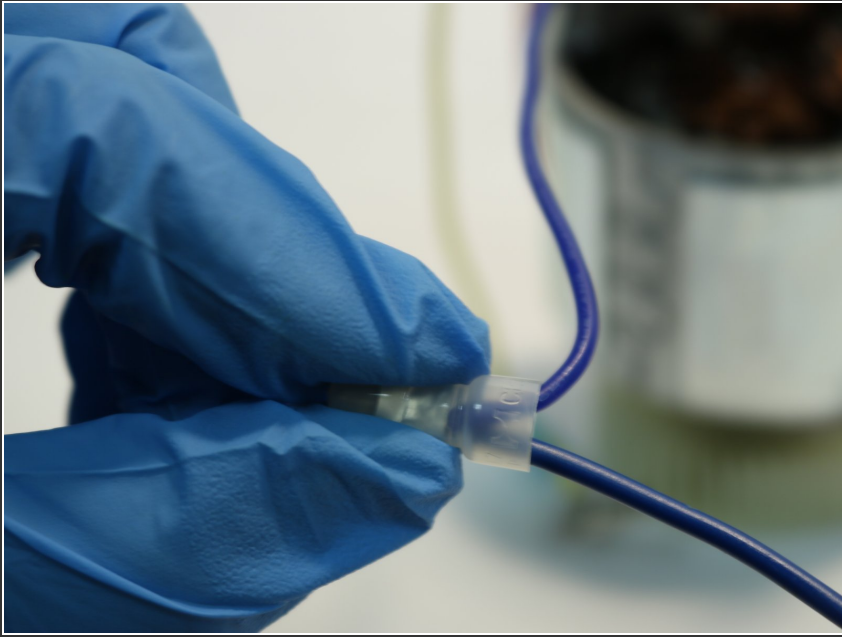
- Grab the motor by the black gear and the white filter.
- Unscrew the black gear.

Step 8



- With the metal spudger remove the four rubber stoppers.
- Remove the four 13mm screws with the Phillips #2 screwdriver.

Step 9



- Separate the top from the motor.
- Pinch perpendicular to the flat surface and pull out the blue wire.

To reassemble your device, follow these instructions in reverse order.