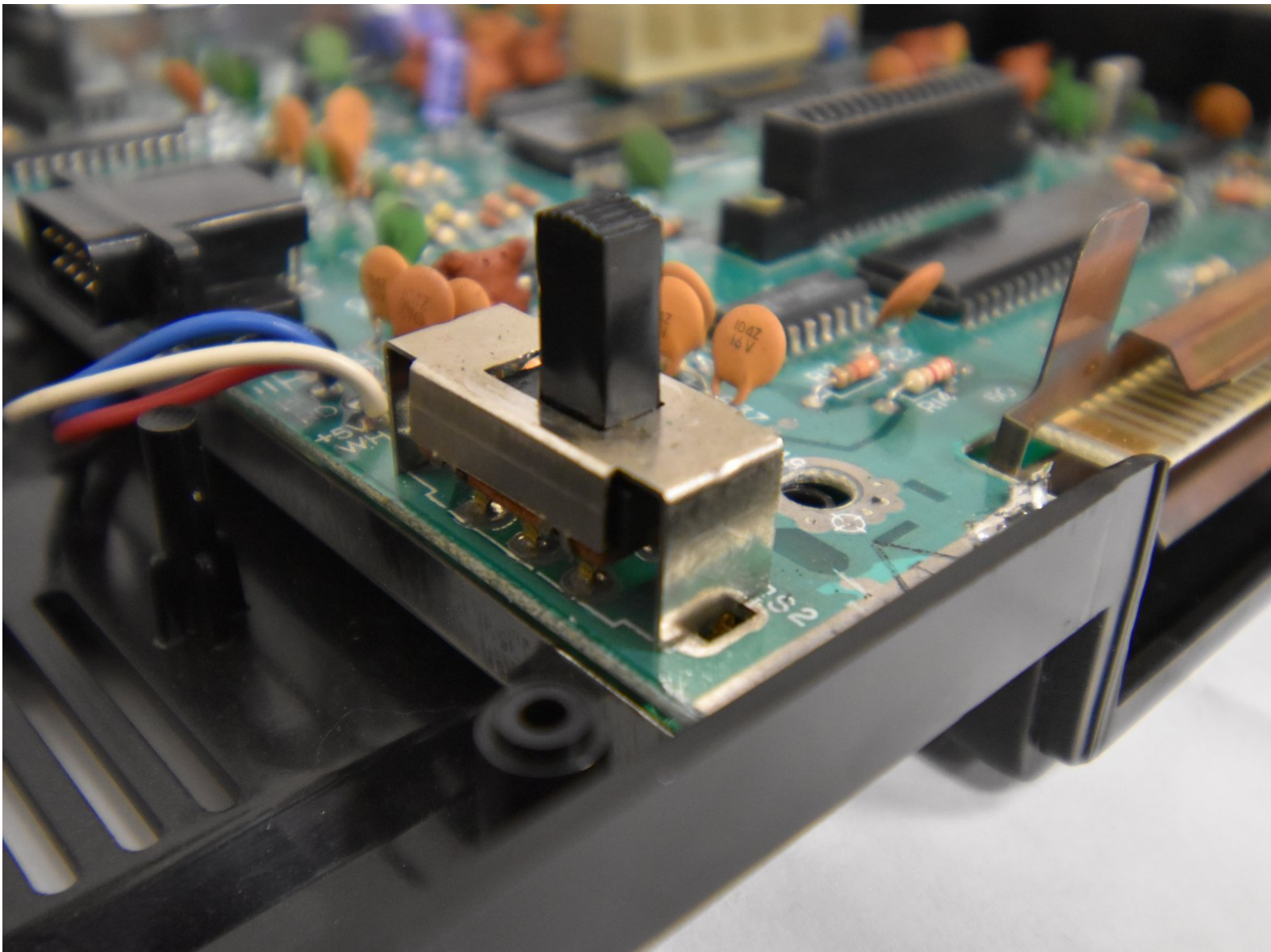




ColecoVision Power Switch Replacement

How to replace a faulty power switch.

Written By: Bobby



INTRODUCTION

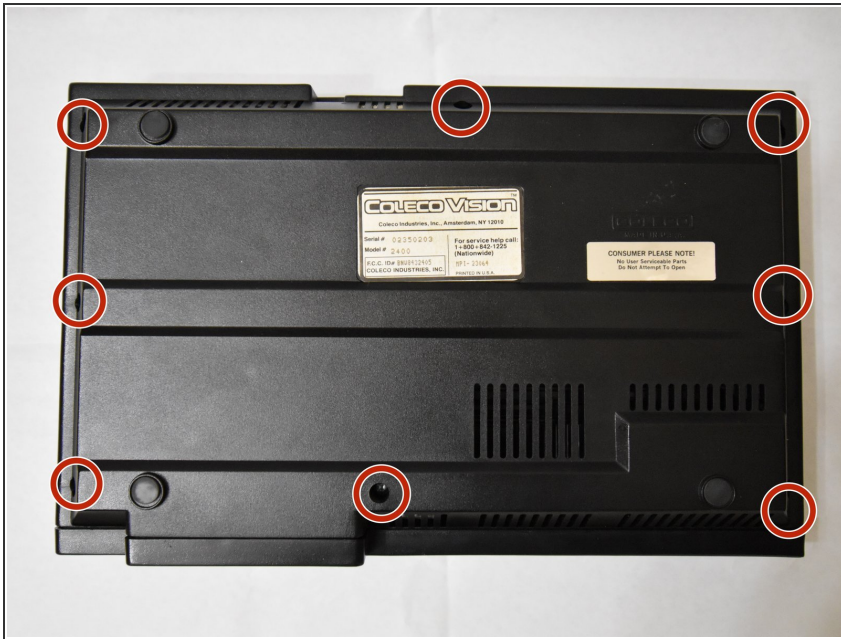
The purpose of this guide is to communicate steps on how to replace or repair the power switch on a ColecoVision.



TOOLS:

- [Soldering Iron](#) (1)
 - [Metal Spudger](#) (1)
 - [Desoldering Pump](#) (1)
 - [Phillips #1 Screwdriver](#) (1)
-

Step 1 — Power Switch



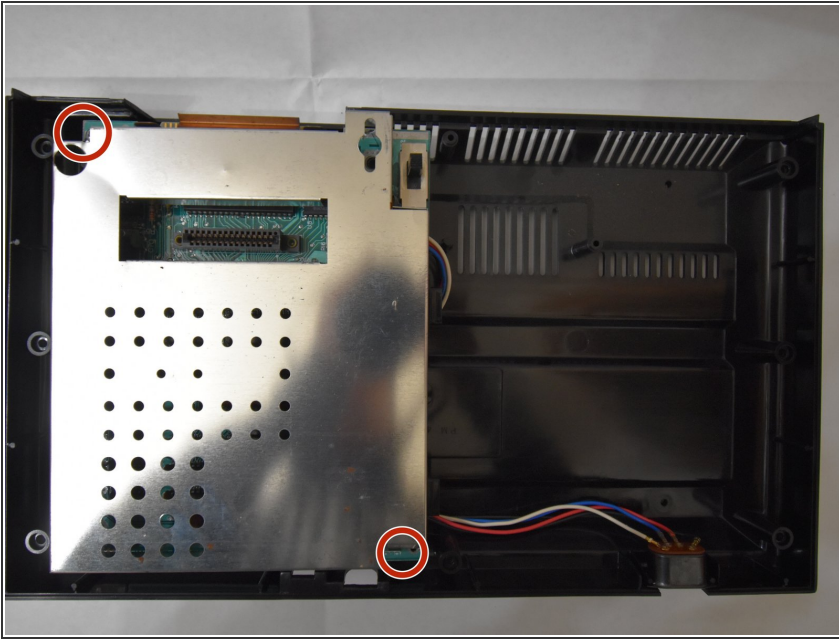
- Flip the ColecoVision over with the pegs facing the ceiling.
- Remove the eight 15mm screws holding the bottom of the ColecoVision in place using the Phillips #1 screwdriver.

Step 2



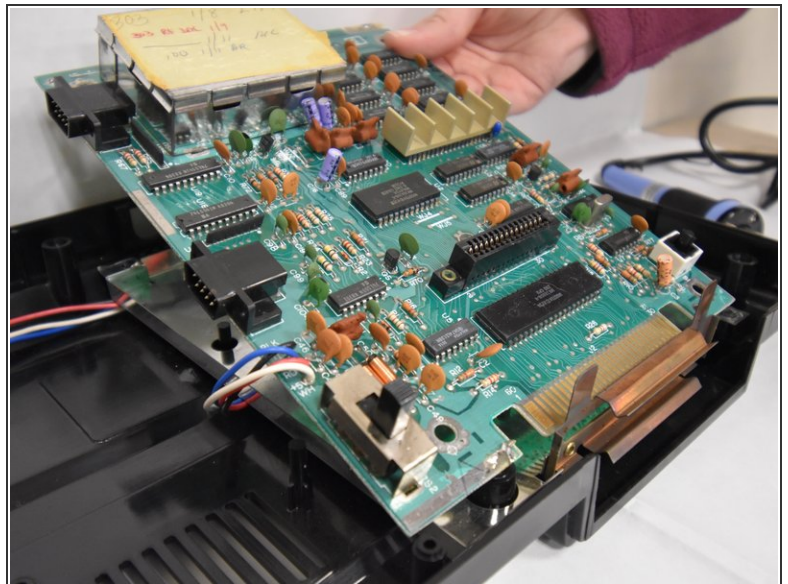
- Carefully remove the bottom of the ColecoVision out of the top.
- I would recommend running a metal spudger along the rim of the case to remove the bottom.

Step 3



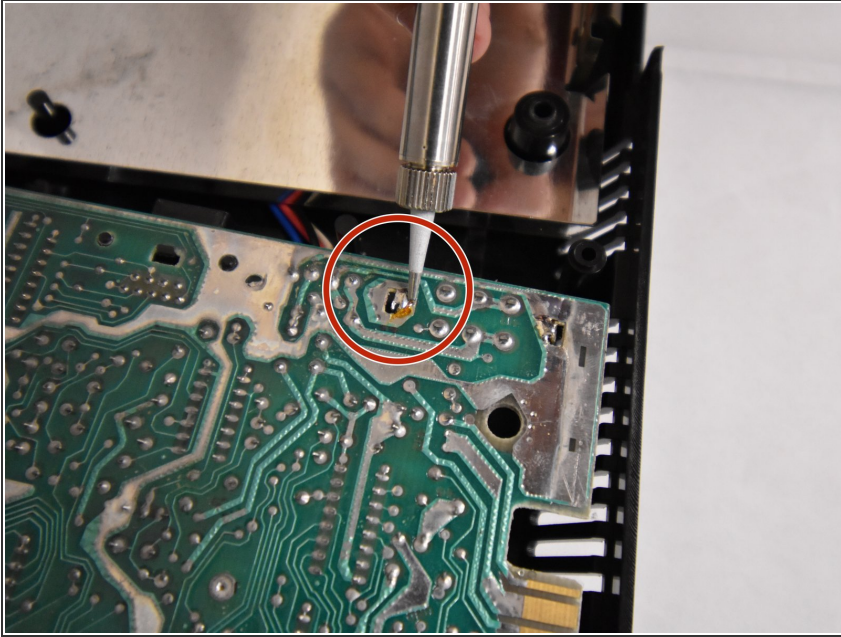
- Remove the two 15 mm screws holding the casing in place using the Phillips #1 screwdriver.

Step 4



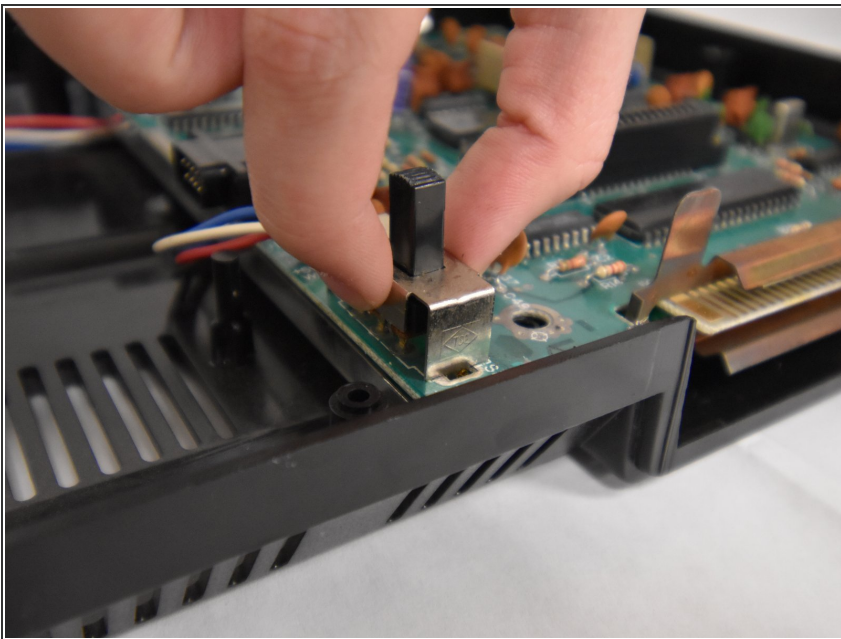
- Using a Phillips #1 screwdriver, remove the two 15mm screws on the motherboard.
- Pull the entire motherboard towards the back of the system and carefully lift the entire motherboard.

Step 5



- Flip the motherboard over.
- Using a soldering iron, carefully desolder the power switch from the motherboard.
- i Refer to this [soldering technique guide](#) for reference.

Step 6



- Wait for power switch to cool down.
- Turn the motherboard over upright.
- Carefully lift up the power switch to completely remove it from the motherboard.

To reassemble your device, follow these instructions in reverse order.