



Novatel MiFi 2 4G LTE Hotspot SIM Card Replacement

Replace a dead SIM Card in your Novatel Hotspot device.

Written By: GerardFoley



INTRODUCTION

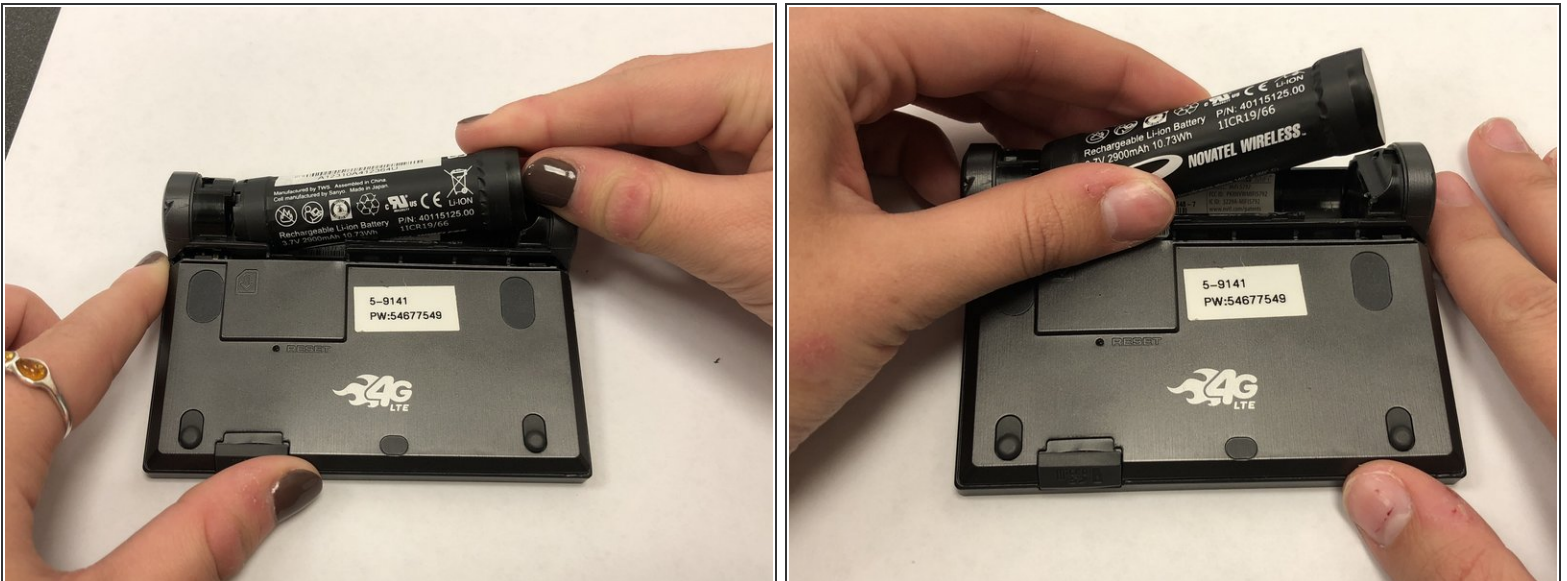
This guide will show you step by step how to remove a dead SIM Card from your Novatel Hotspot device. This requires the removal of the black plastic battery cover and the battery.

Step 1 — Battery Cover



- Unplug the charger from your Novatel Hotspot device.
- Place the Novatel Hotspot device face down on a flat, clean surface.
- Place your thumb under the latch of the black plastic battery cover as shown.
- ❗ Remove the battery cover. This will require some force.

Step 2 — Battery



- Gently place your thumb on the right side of the battery as shown.
- Remove the battery from its socket by lifting it up and out.

Step 3 — SIM Card



- Once the battery has been removed, the SIM Card slot can be accessed.
- Carefully take out the dead SIM Card by lifting it from its position with your fingers.

To reassemble your device, follow these instructions in reverse order.