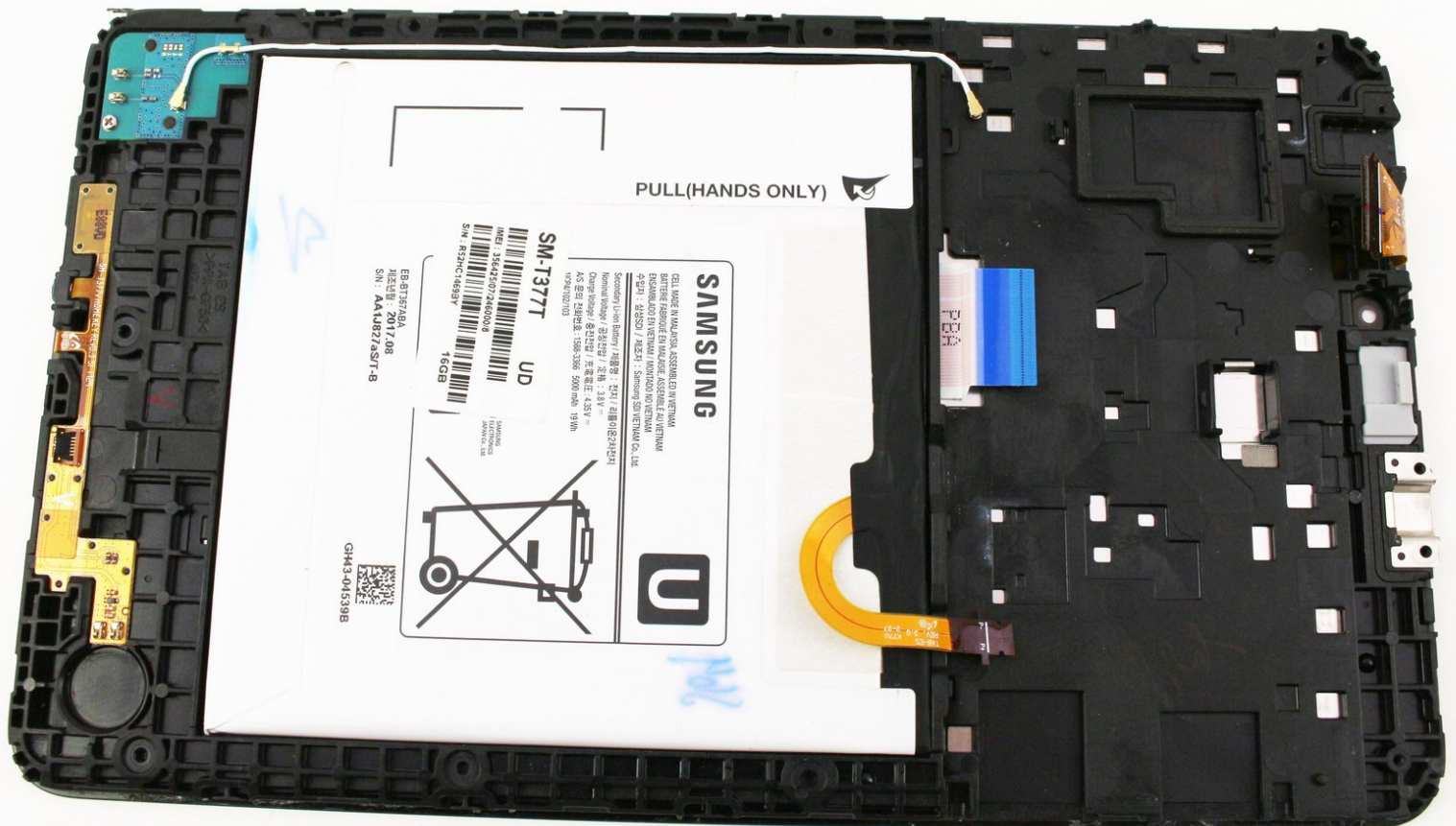




Samsung Galaxy Tab E 8.0 Battery Replacement

Replacing the battery of the Samsung Galaxy Tab E 8.0.

Written By: Chrissy B



INTRODUCTION

The battery of the Samsung Galaxy Tab E 8.0 may run out of charge rapidly or may not be able to hold charge at all. This guide will show how to replace the tablet's battery, which is attached to the front panel.



TOOLS:

- [JIS #00 Screwdriver](#) (1)
 - [iFixit Opening Tools](#) (1)
 - [Tweezers](#) (1)
-

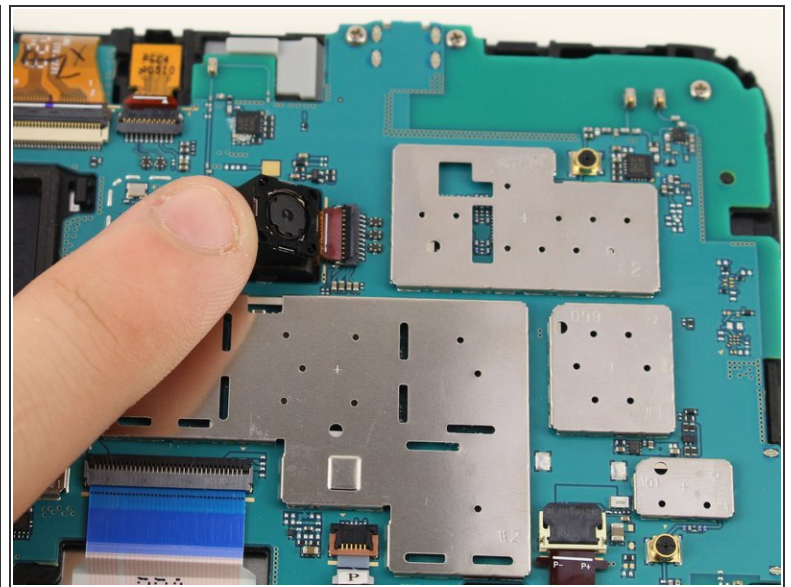
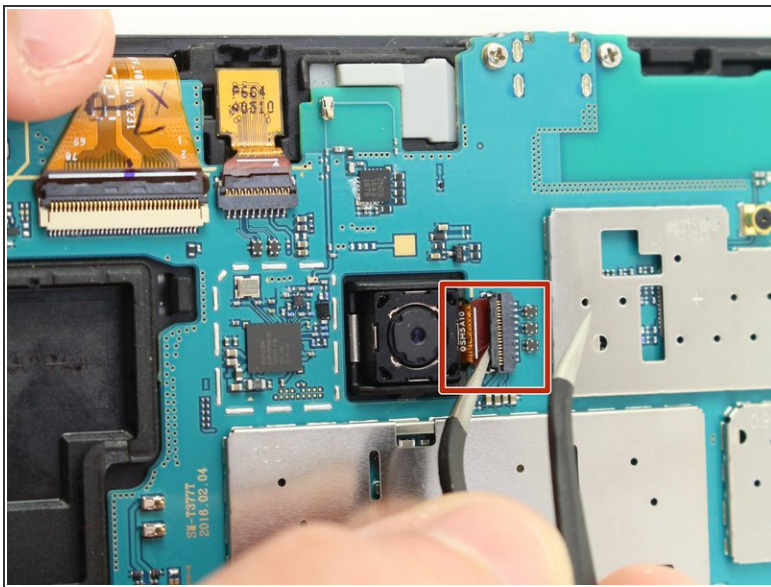
Step 1 — Back Panel



- Use the iFixit Opening Tool to pry off the back case, moving the tool around the screen.

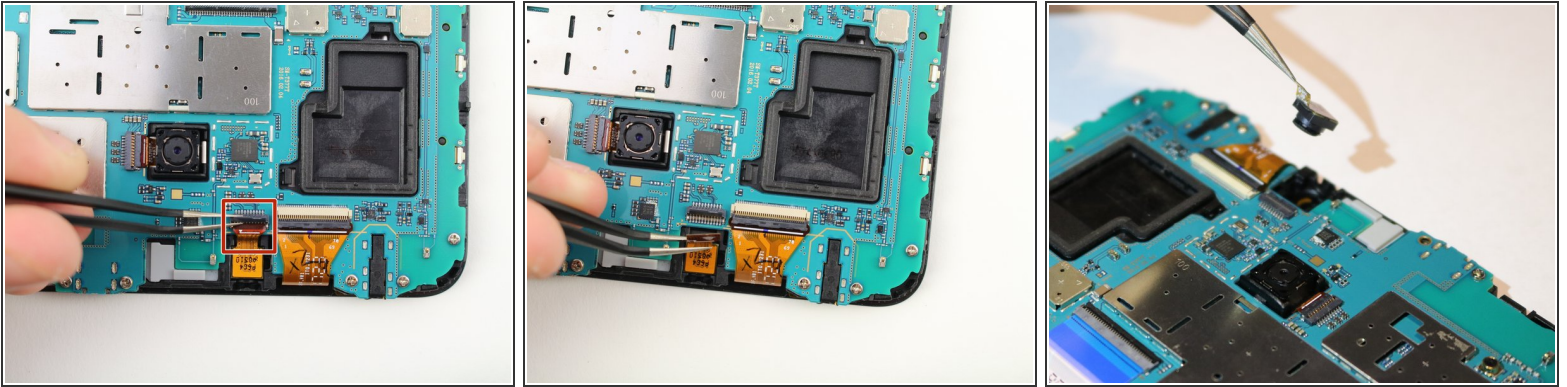
⚠ Make sure the device is off and the SD card is removed before taking off the back casing.

Step 2 — Back Camera



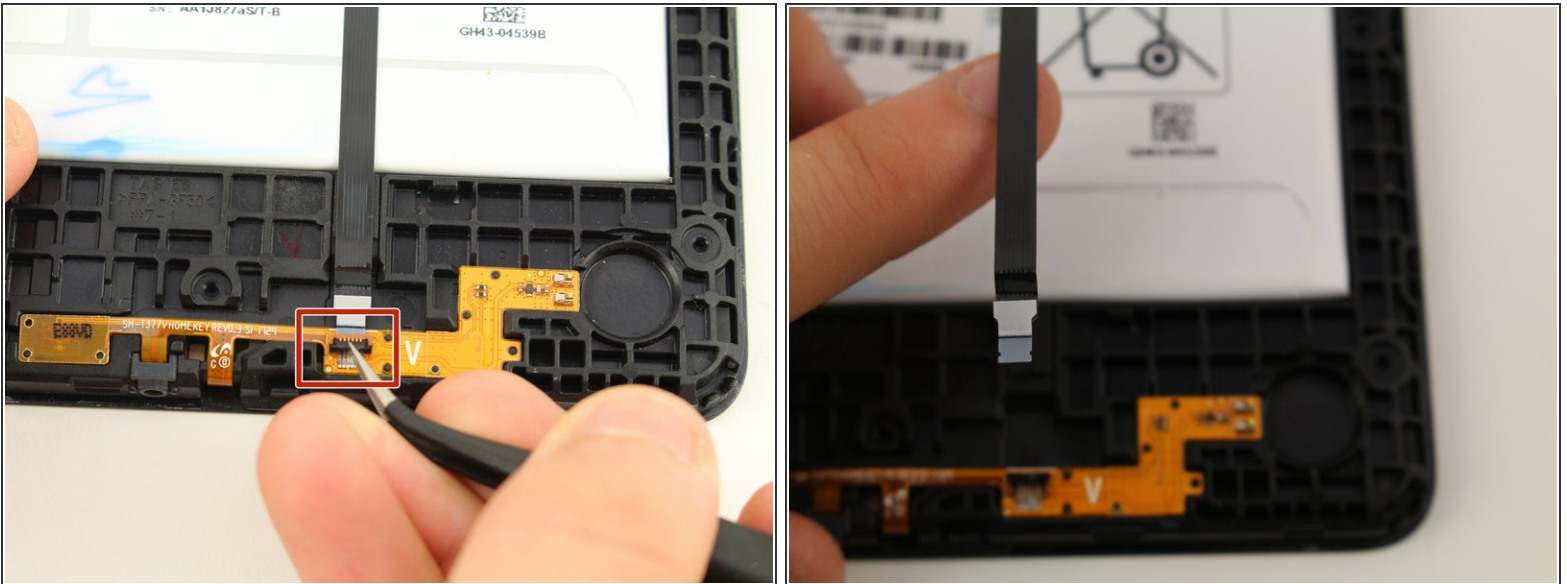
- Use the tweezers to lift the switch connecting the back camera to the motherboard.
- Use your hand to remove the back camera from the motherboard.

Step 3 — Front Camera



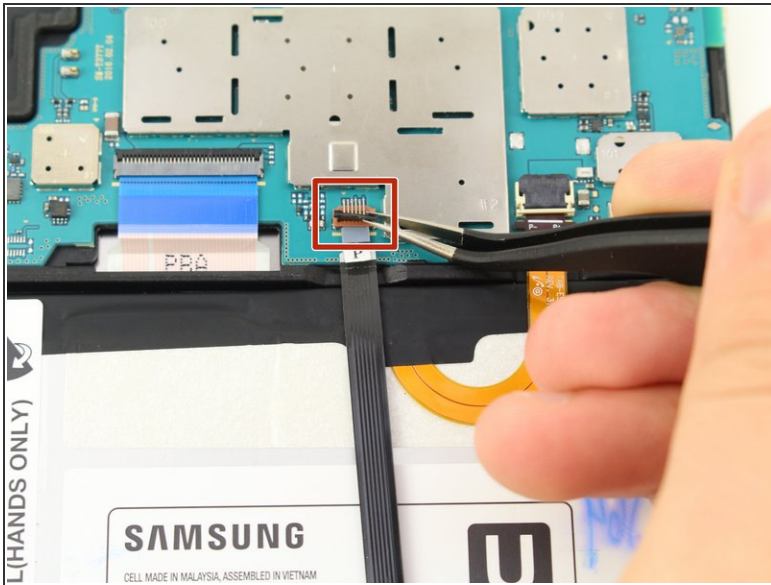
- Use the tweezers to lift the switch connecting the front camera to the motherboard.
- Remove the front camera from the motherboard by lifting with the tweezers.

Step 4 — Motherboard



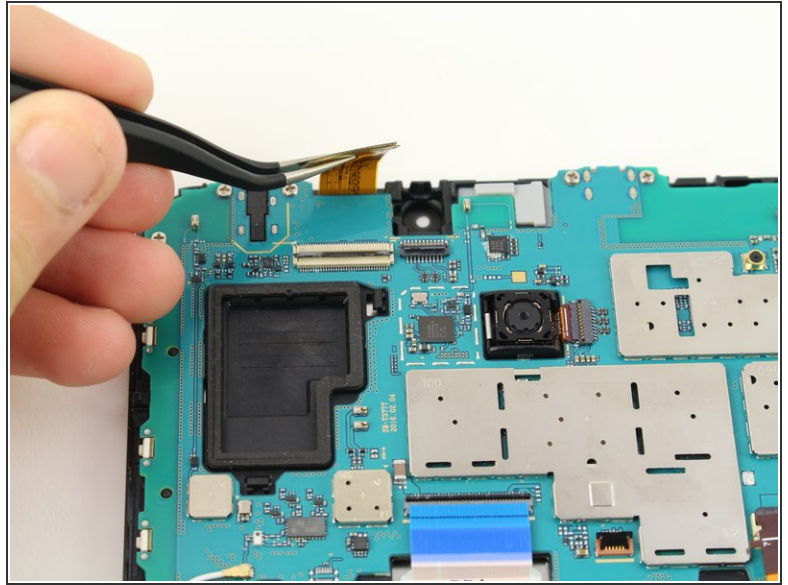
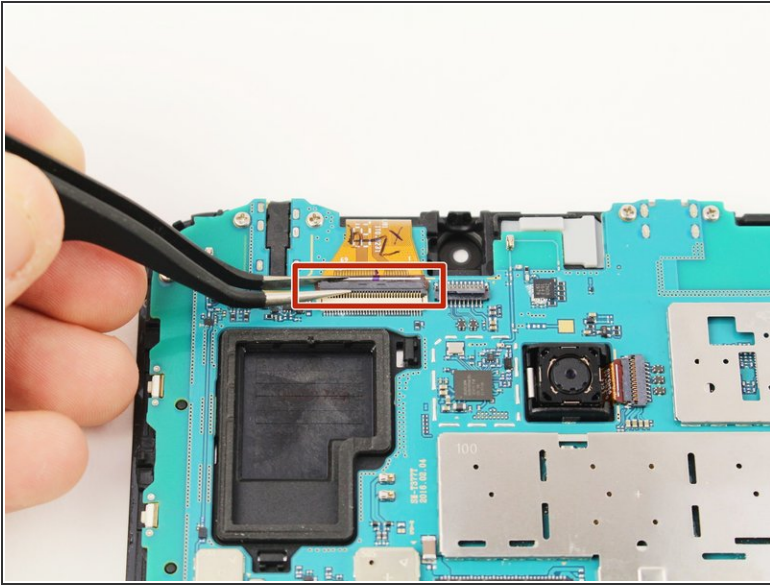
- Use the tweezers to flip the switch on the bottom of the strap that goes over the battery.
- Release the strap from the switch by lifting the strap with your hand.

Step 5



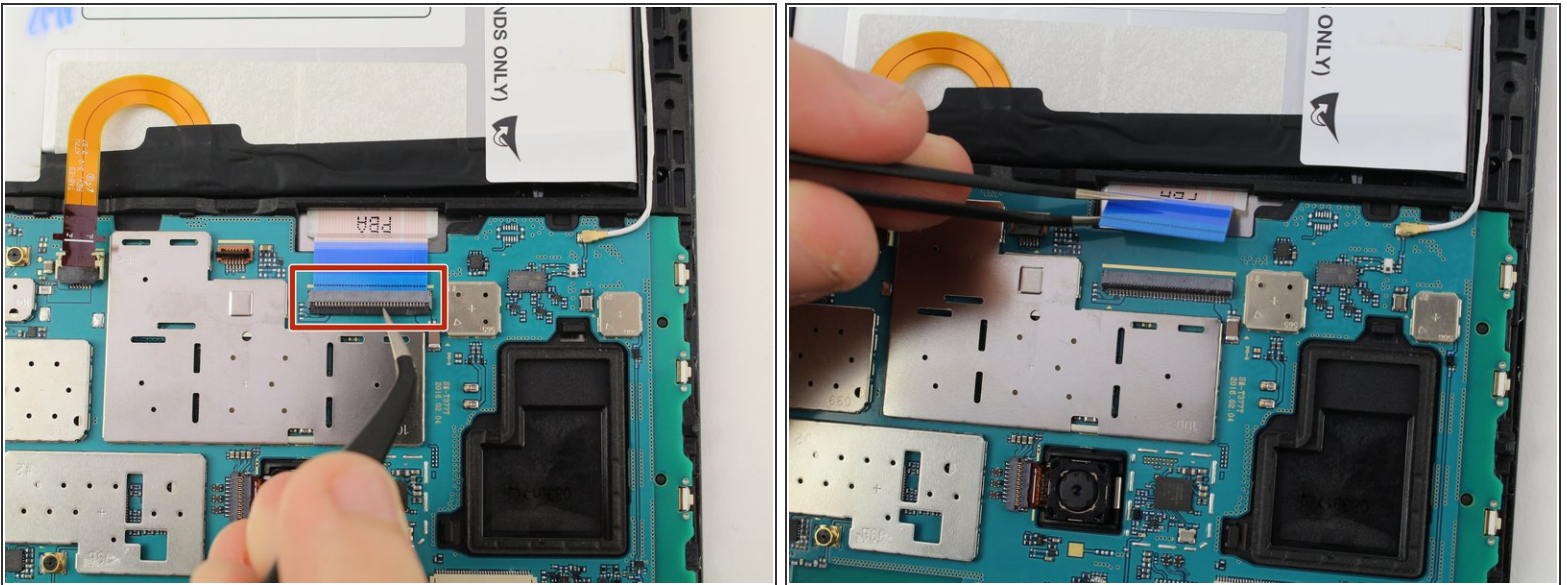
- Use the tweezers to flip the switch that connects the top of the strap to the motherboard.
- Lift the top end of the strap with your hand and remove the strap completely from the device.

Step 6



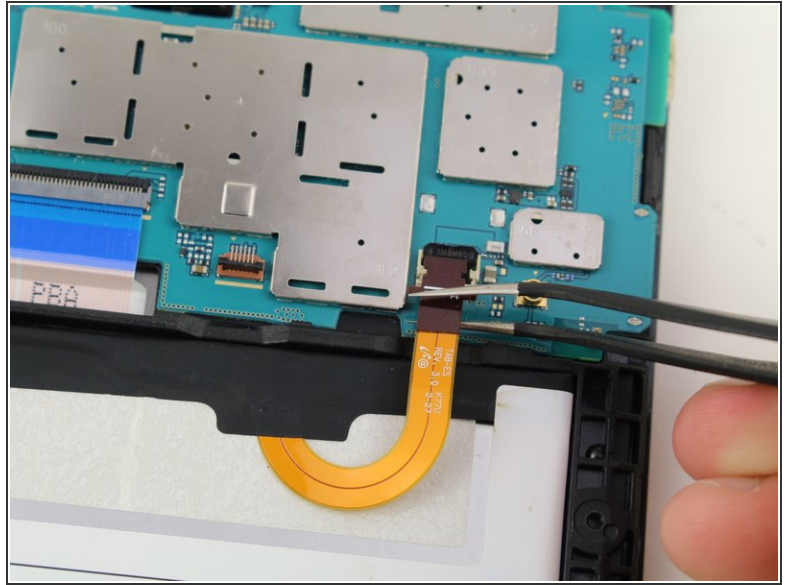
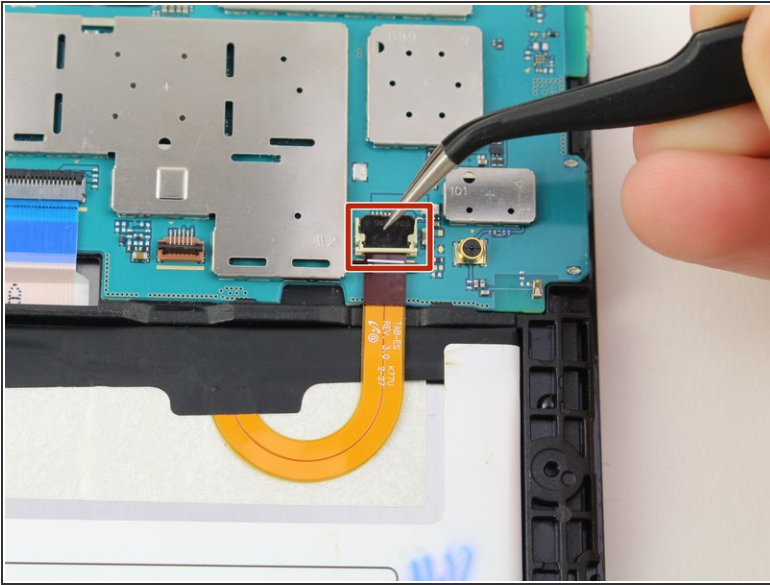
- Use the tweezers to flip the switch of the connector.
 - Lift the connector from the motherboard.
- i** This connector does not come completely off, but disconnects from the motherboard.

Step 7



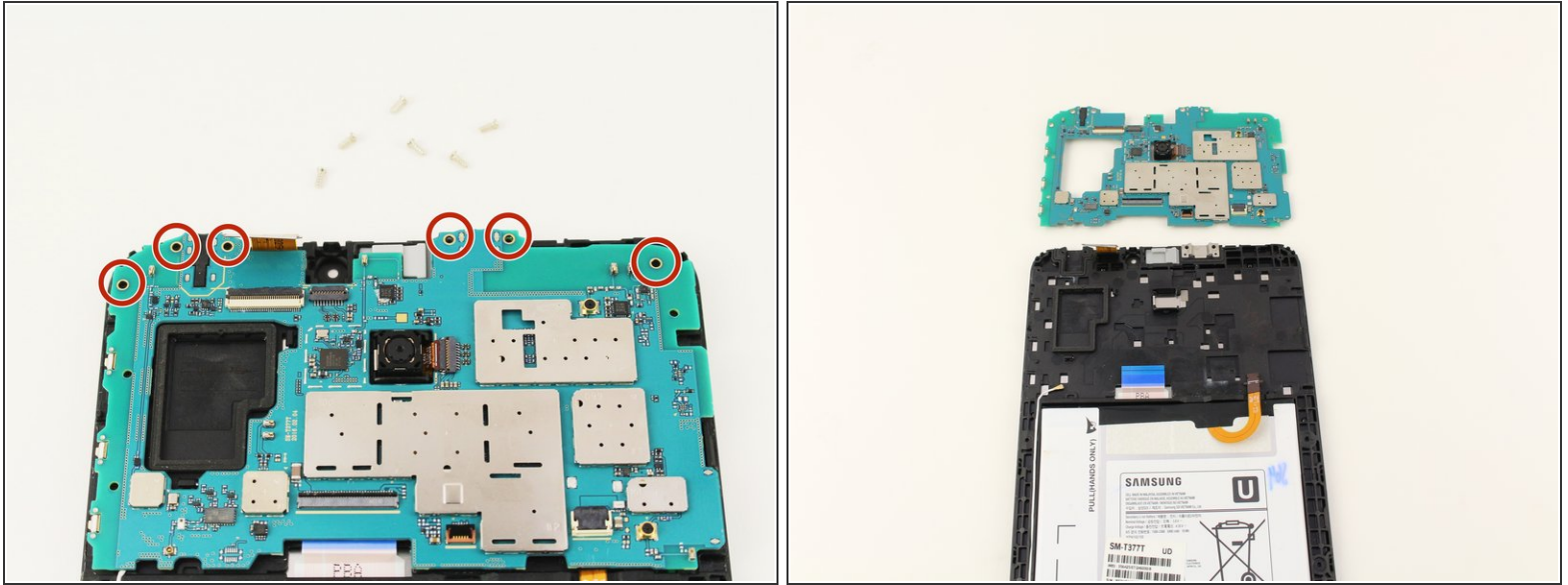
- Use the tweezers to flip the switch of the blue connector on the motherboard.
- Lift the connector from the motherboard.
- ⓘ This switch can detach from the device, but just needs to disconnect from the motherboard.
- ⓘ Ensure the blue ribbon cable is not under the motherboard upon reassembly.

Step 8



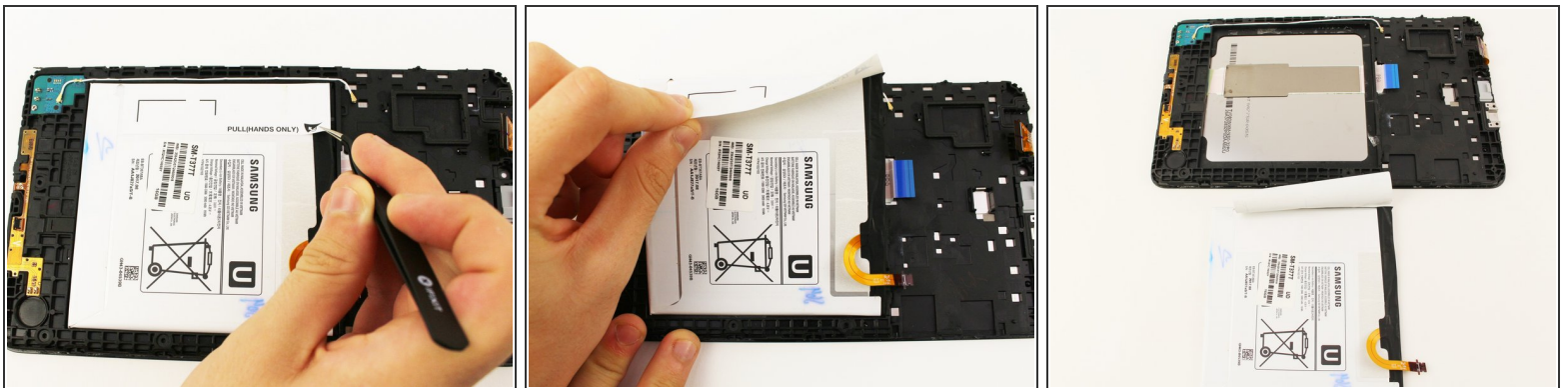
- Use the tweezers to flip the switch of the connector that runs from the battery to the motherboard.
 - Lift the connector from the motherboard.
- i** This switch can detach from the device, but just needs to disconnect from the motherboard.

Step 9



- Use a JIS #00 screwdriver to remove the six 4.5mm screws at the top of the motherboard.
- Lift the motherboard with your hand to detach the motherboard from the device.

Step 10 — Battery



- Use the tweezers to lift the flap on the left end of the battery and pull up with your hand to remove the battery.
- ⓘ The battery is held by an adhesive on the back, so it will take some force to remove.

To reassemble your device, follow these instructions in reverse order.