



# Purple SmartVP Mount Replacement

Replace a damaged or broken mount affixed to your device.

Written By: Brian Maulucci

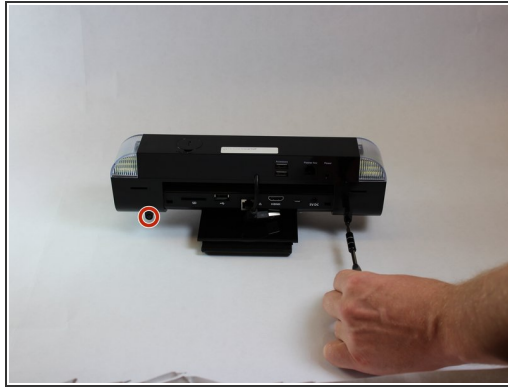




## TOOLS:

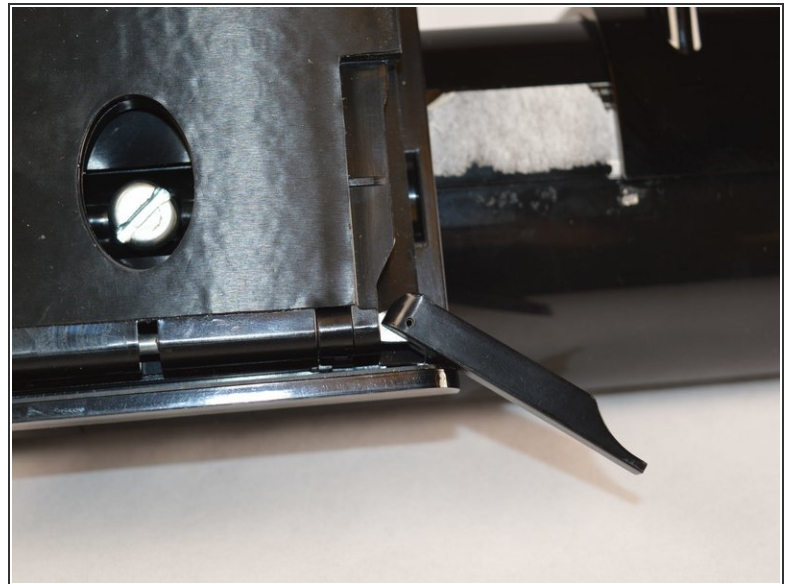
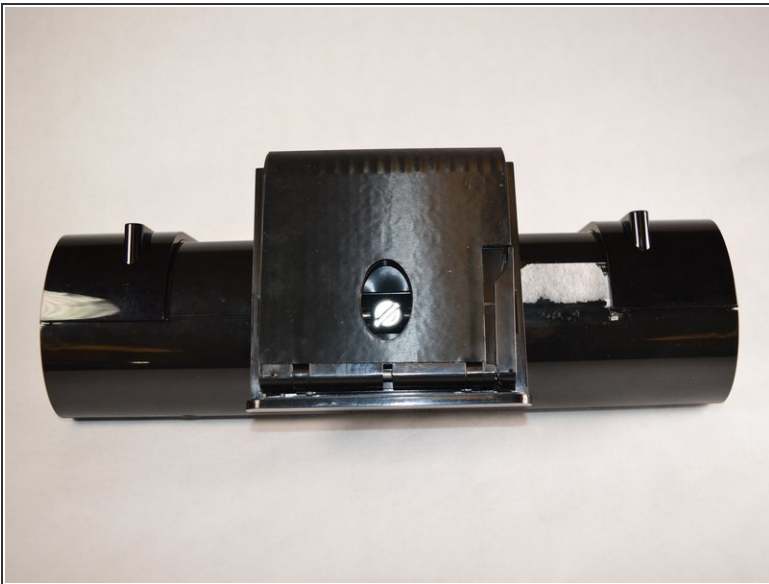
- [Flathead Screwdriver](#) (1)
  - [T10 Torx Screwdriver](#) (1)
-

## Step 1 — Mount



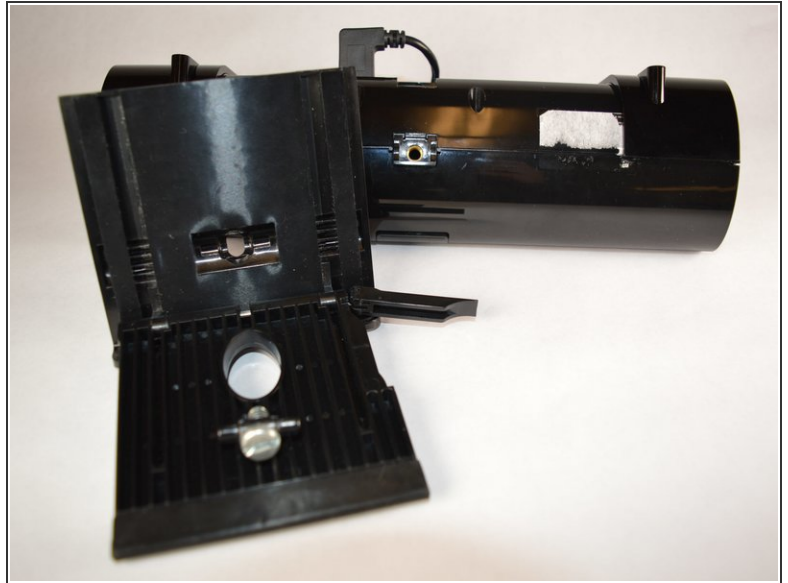
- Remove the top bar by removing the 5cm hex T10 screws on the back of the device as shown. Then gently pull off the top bar from the main component.

## Step 2



- Locate and release the flap on the side of your device's mount. This will allow you to slide the adjustable portion of the mount.

### Step 3



- Using a #4.0 flathead screwdriver, unscrew your mount from the bottom and remove the 1.2cm screw.

To reassemble your device, follow these instructions in reverse order.