



Nokia 6200 Classic SIM Card Replacement

This guide shows how to replace the SimCard.

Written By: Reid Polstra



INTRODUCTION

The back cover and the battery have to be removed before the SimCard can be reached. No tools are required.

Step 1 — Battery



- Turn the phone so it is face down (keypad side is down).

Step 2



- Press and hold the button located at the bottom of the phone.
- Slide the back of the phone downwards and away from the main body.
- Remove the backing and place it to the side.

Step 3



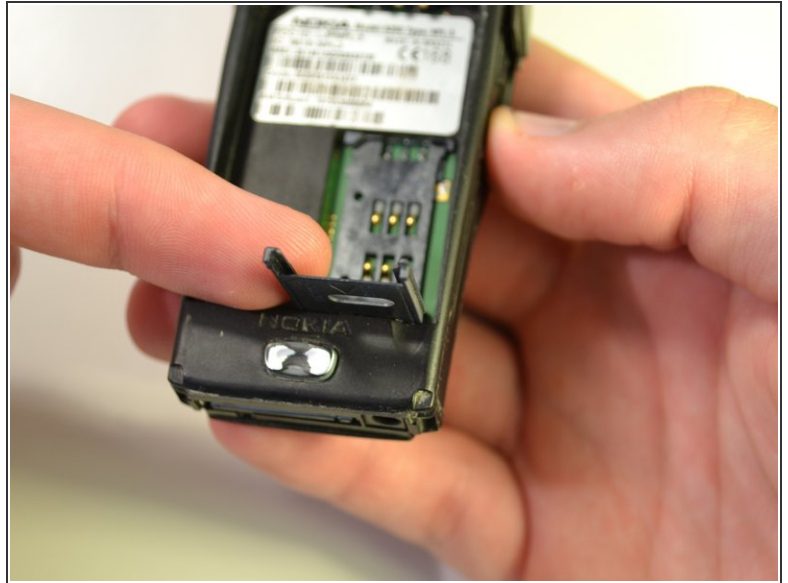
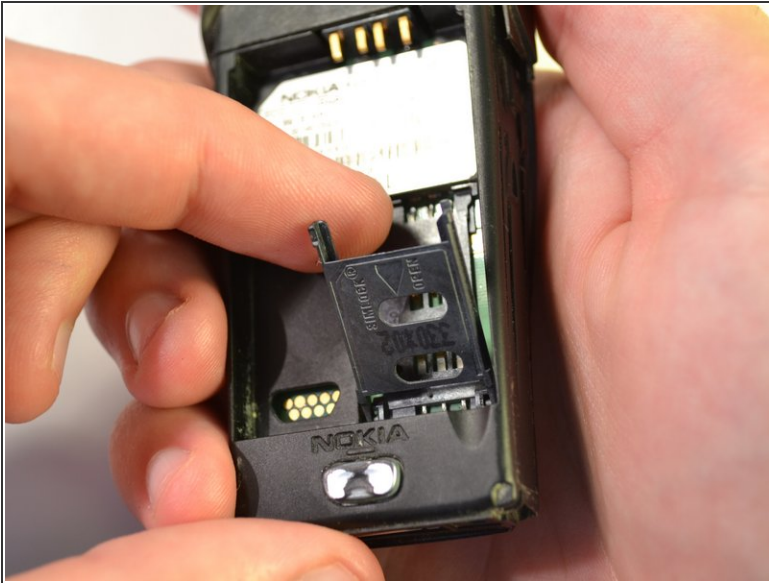
- Locate indentation from which battery can be removed.
- Place finger in indentation and lift battery up from phone's body.
- Remove battery from phone's body.

Step 4 — SIM Card



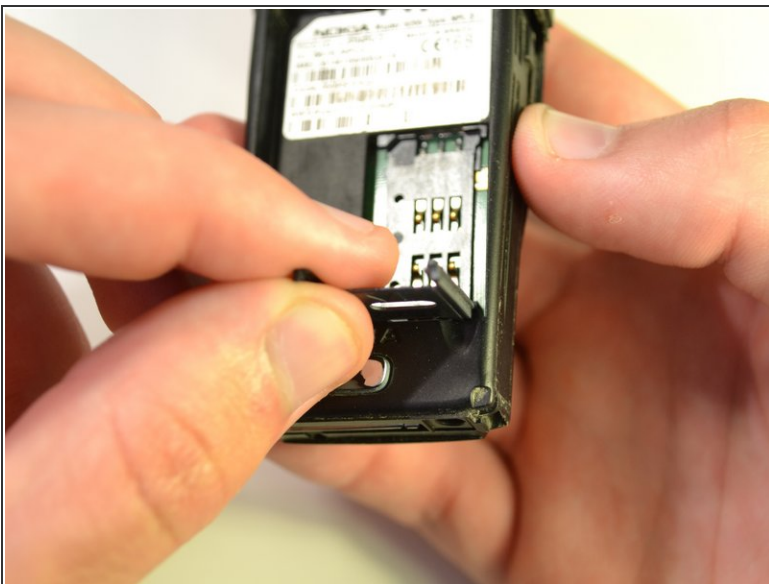
- Push the SimCard towards the bottom of the phone.

Step 5



- Slide finger underneath top of SimCard.
- Lift up the SimCard and rotate the top of the SimCard so it moves toward the bottom of the phone.

Step 6



- Pull up on the SimCard and remove it from the back of the phone.
- Place the SimCard to the side.

To insert a new SimCard, simply push the card in as shown in step 6, and snap it in place.