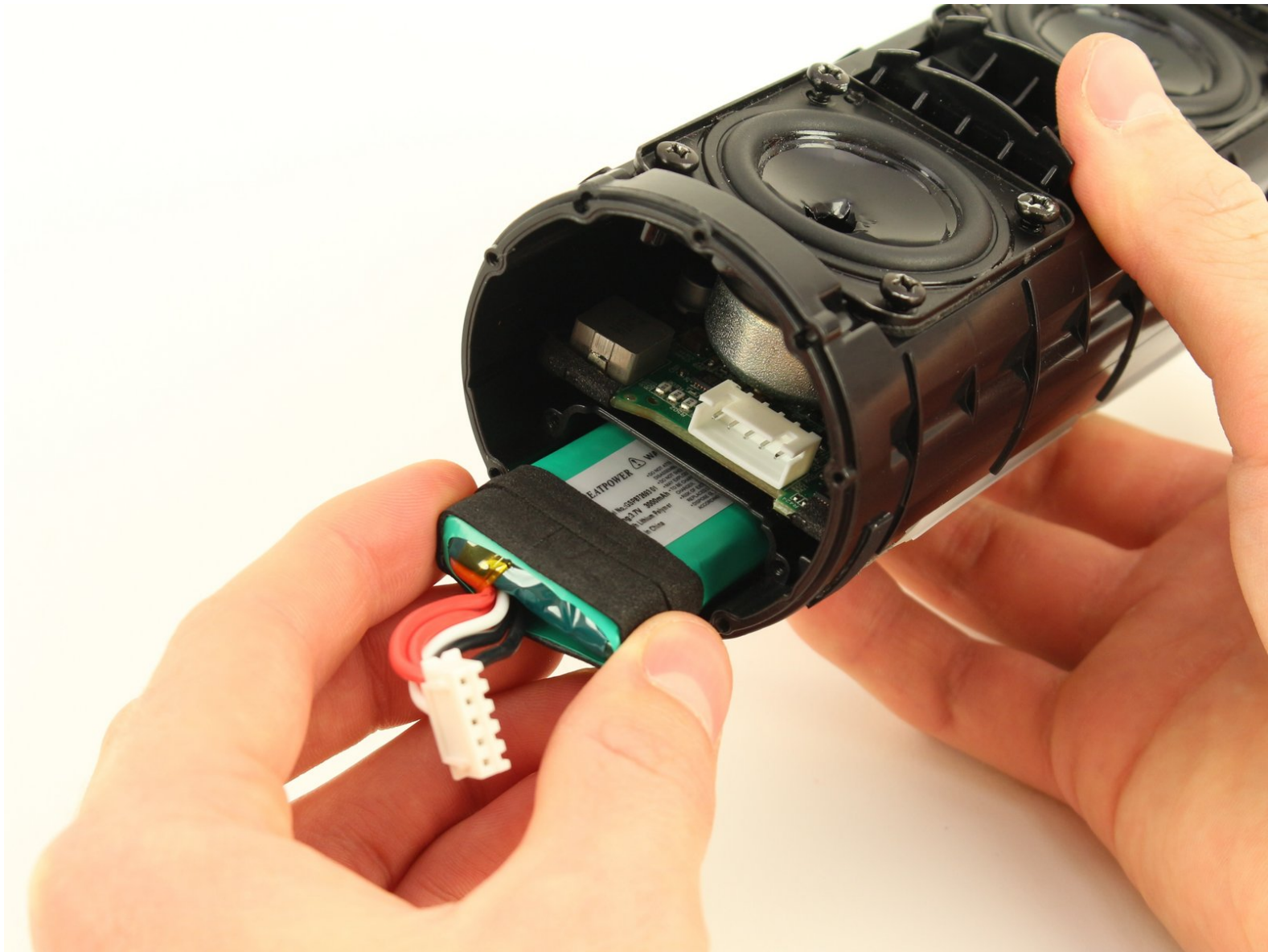




JBL Flip 4 Battery Replacement

Has the battery life of your device become...

Written By: Philip Pang



INTRODUCTION

Has the battery life of your device become unusable? Does the battery seem to refuse to charge? A faulty battery is possibly the cause of these power issues. As the battery undergoes more cycles, it holds less charge.



TOOLS:

- [JIS #0 Screwdriver](#) (1)
- [iFixit Opening Tool](#) (1)
- [Phillips #0 Screwdriver](#) (1)



PARTS:

- [JBL Flip 4 Replacement Battery](#) (1)

Step 1 — Shell



- Insert the plastic opening tool in the crack in between the cover and the rubber spine with the power button.
- Pry off the cover, beginning with the side without the volume and bluetooth buttons.
- ⓘ When prying the cover off, the six clips (three along each side of rubber spine) that attach the cover to the speaker will make snapping sounds.

⚠ Watch out not to damage the clips on the buttons' side, pry open with caution.

- Pull the cover off with your thumbs.

Step 2



- Remove four 13 mm JIS #0 screws attaching the rubber spine to the speaker, located on both sides of the inside of the speaker.
 - Use the plastic opening tool to release the clips holding the central part of the rubber spine.
 - Pry away one end of the rubber spine with your thumbs and it should come off.
- i** Prying off the spine may take some persuading.

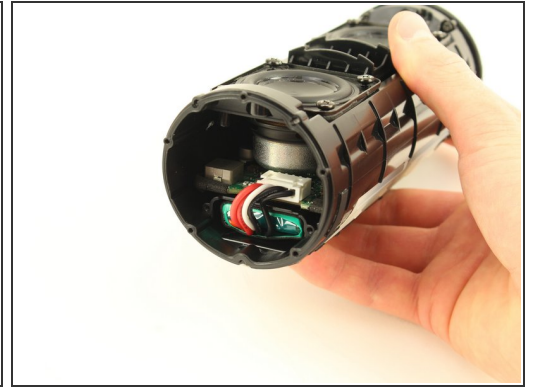
⚠ The speakers are strong magnets. Keep it away from other sensitive electronics.

Step 3 — Battery



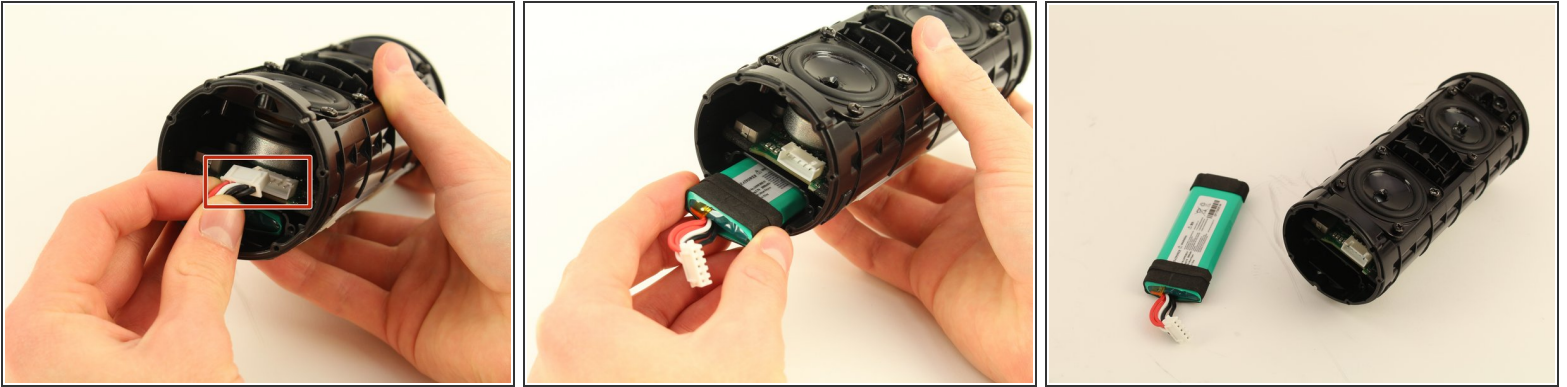
- Remove five 9mm Phillips #1 screws from the end cap opposite to the USB port.
- Pull the end cap off with your hands.

Step 4



- Remove two 11mm Phillips #1 screws on the battery cover.
- Pull the battery cover off with your hands.

Step 5



- Remove the large white plug that connects the wires from the battery to the main board using your hands.
 - Pull the battery out with your hands.
- ⚠ If the battery is swollen, you might not be able to pull it out with your hands, you might just rip the cables+charging board out.**
- In this case, you can try to remove the other radiator, unscrew the charging port and gently pull it out just a bit so a large screwdriver's end - without its bits - can fit in and push out the battery from this side.
- ⓘ** The port might be hot glued and under the tapes there are very small normal and ribbon cables, so be careful not to cut or rip them.

To reassemble your device, follow these instructions in reverse order.