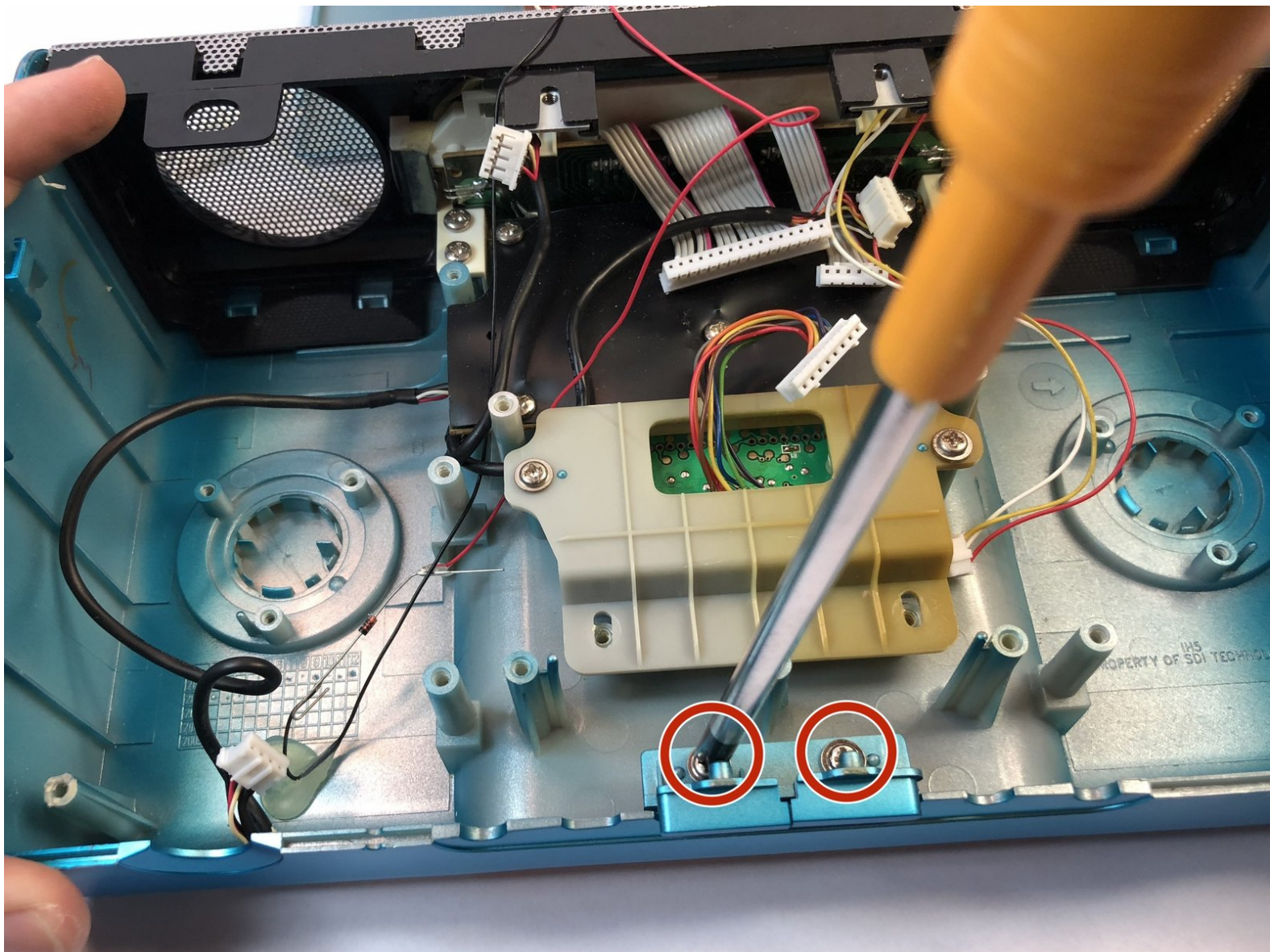




# iHome iH3L Clock Buttons Replacement

Clock buttons are unresponsive. These buttons are located at the back of the iHome.

Written By: Brittany Holloway



---

## INTRODUCTION

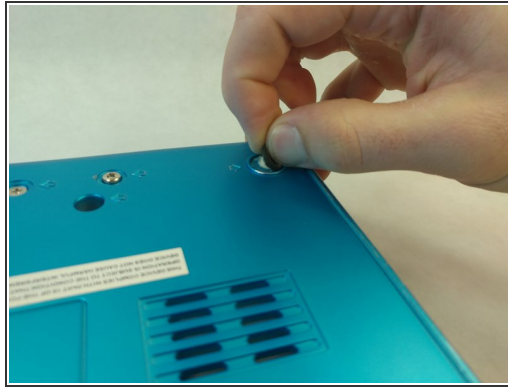
The iHome iH3L also functions as a clock. This guide will help you replace damaged clock adjustment buttons that would be used to set the time.

---

### TOOLS:

- [Phillips #2 Screwdriver](#) (1)
-

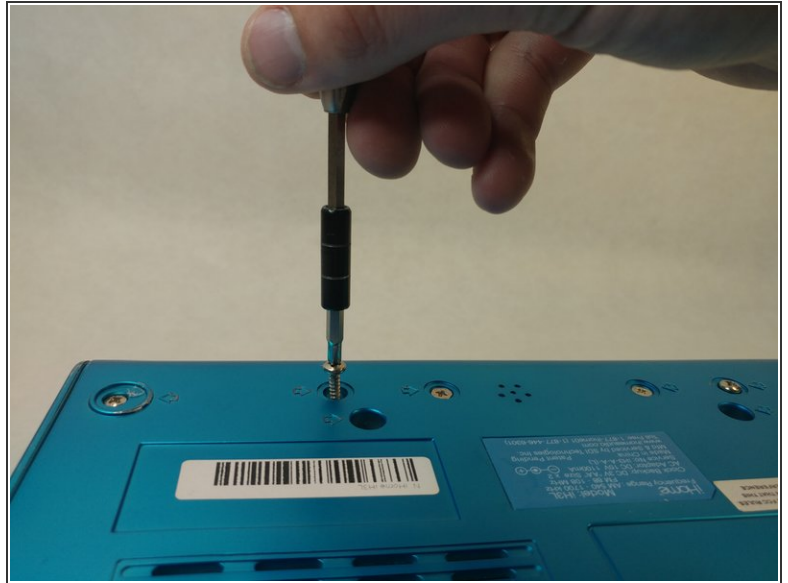
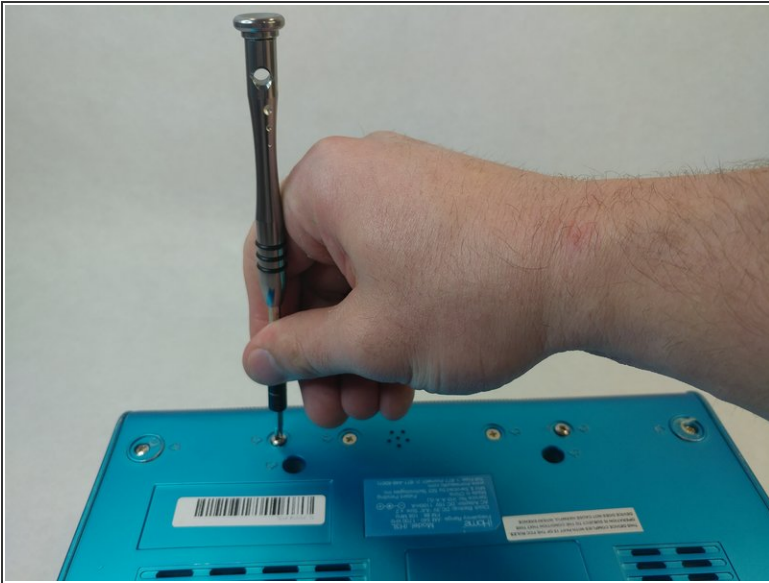
## Step 1 — Speakers



- Locate all screws on the back of the iHome. Each screw can be located by the arrows on the iHome.
  - Two Countersunk 9.7 mm Phillips #2 screws in the middle.
  - Two 15.9 mm Phillips #2 screws.
  - Six 13.9 mm Phillips #2 screws.
- Some screws are located under the black sticky pads. Gently remove the black sticky pads and it will expose the screws.
- Two 11.8 mm Phillips #2 screws.

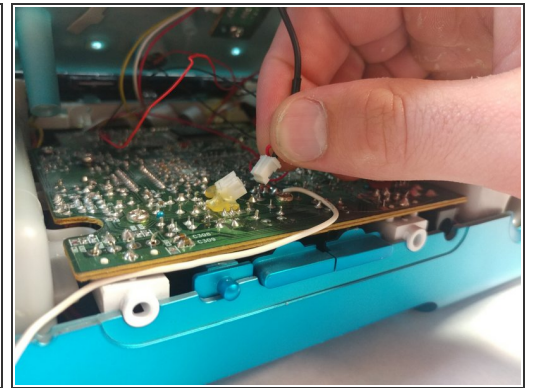
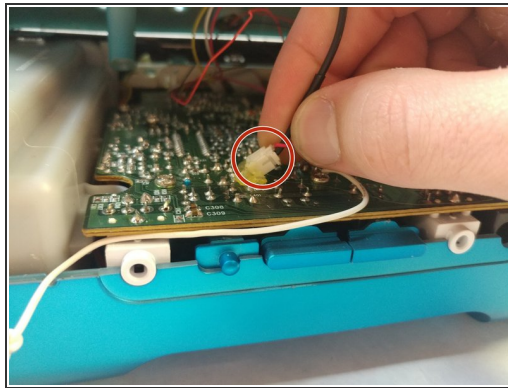
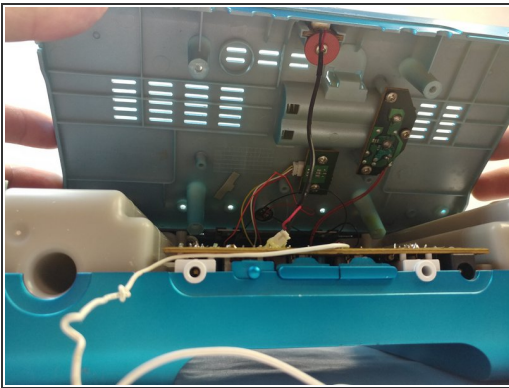


## Step 2



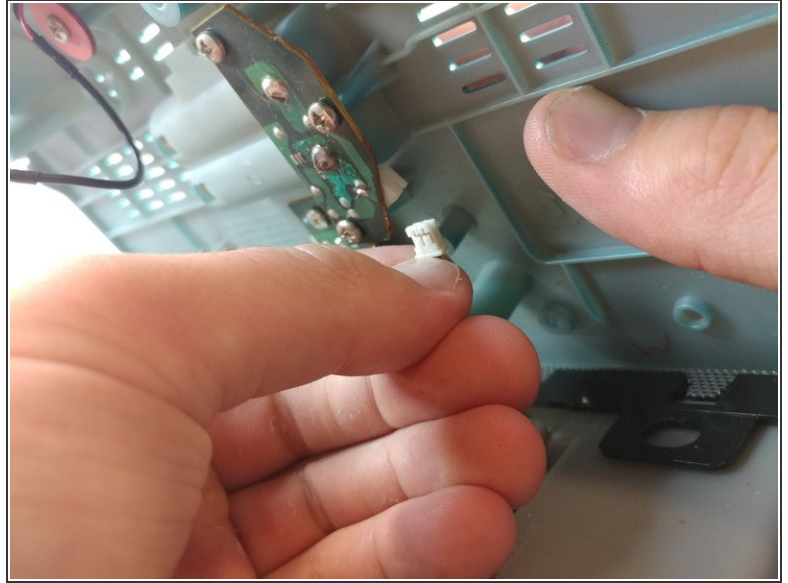
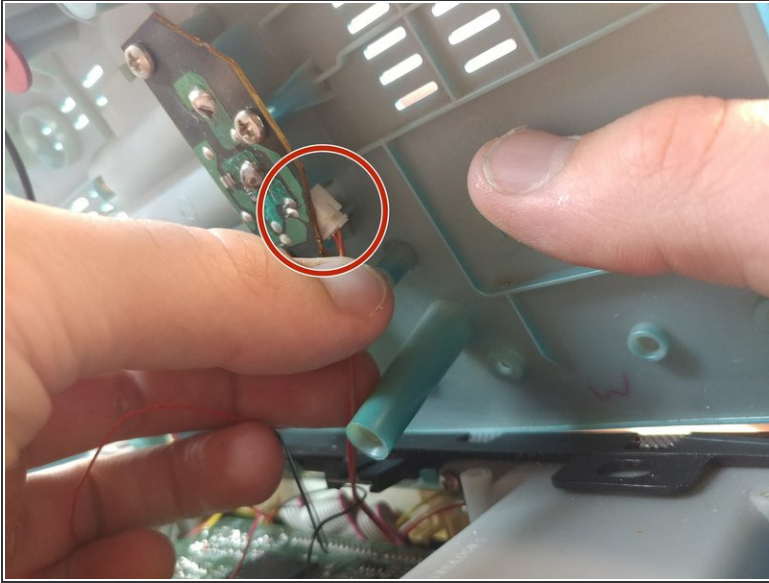
- Remove all screws indicated in the previous step.

## Step 3



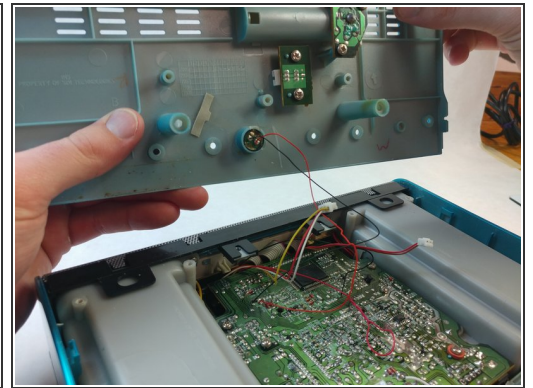
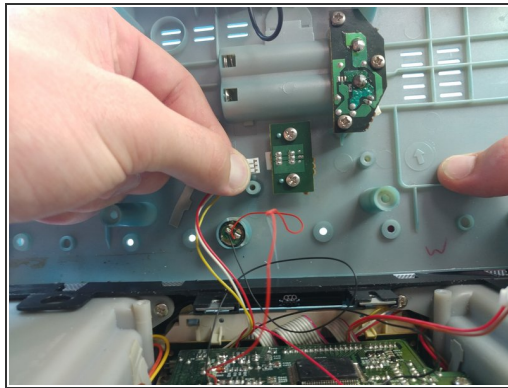
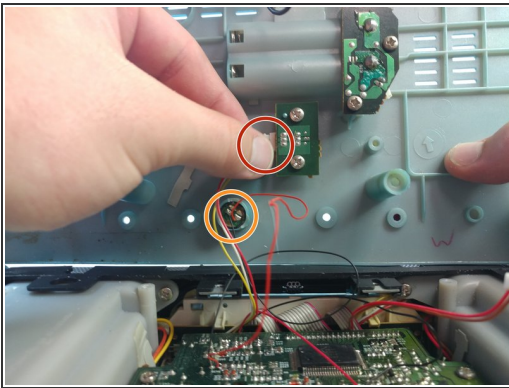
- Slowly tilt the bottom cover of the iHome up.
- ⚠ Do not yank the cover off, there is a wire connecting the cover to the circuit board.
- Disconnect the wire just by pulling on the connector gently.

## Step 4



- Disconnect the next connector pin after slowly opening the lid more.

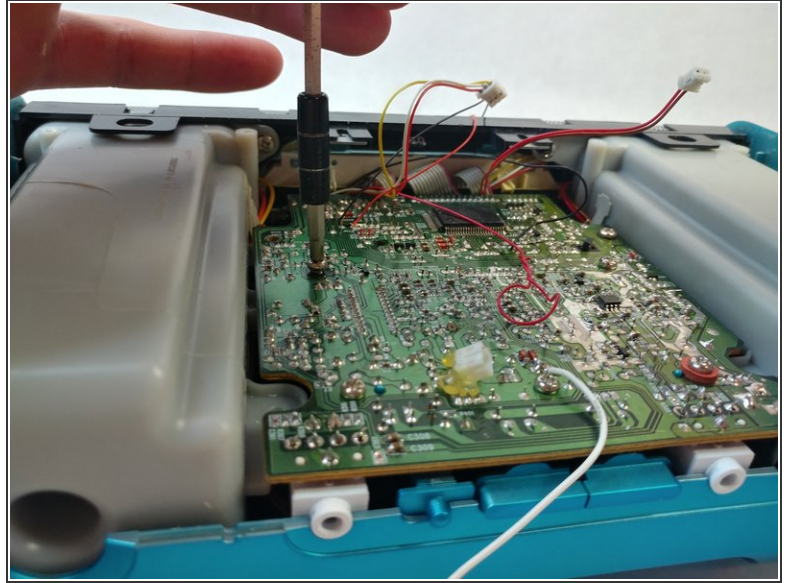
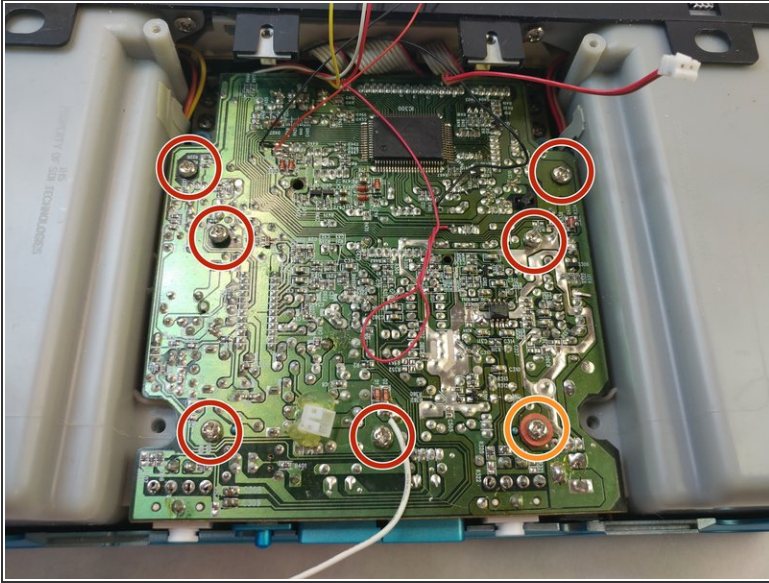
## Step 5



- Disconnect the final connector pin series and carefully set your lid behind the body of the iHome.
- The tiny speaker will not be disconnected for this repair, but you can easily remove it from the lid by means of a paperclip from the outside. While not necessary, this can help prevent damage to your device.

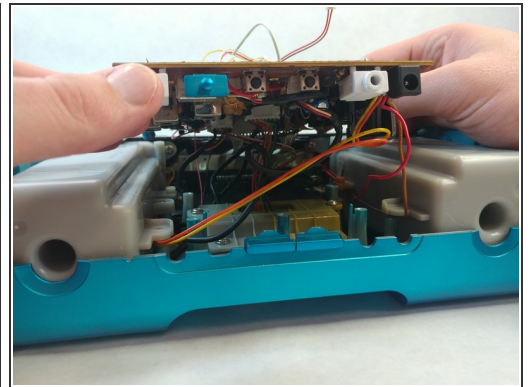
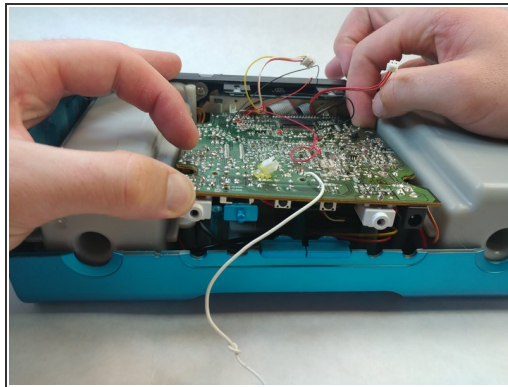
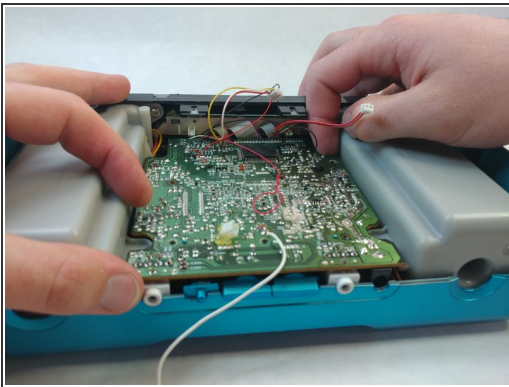


## Step 6



- Remove the seven screws that are holding the motherboard in place:
  - Six 14 mm Phillips #2 screws.
  - One 14 mm Phillips #2 screw with two rubber washers on it.

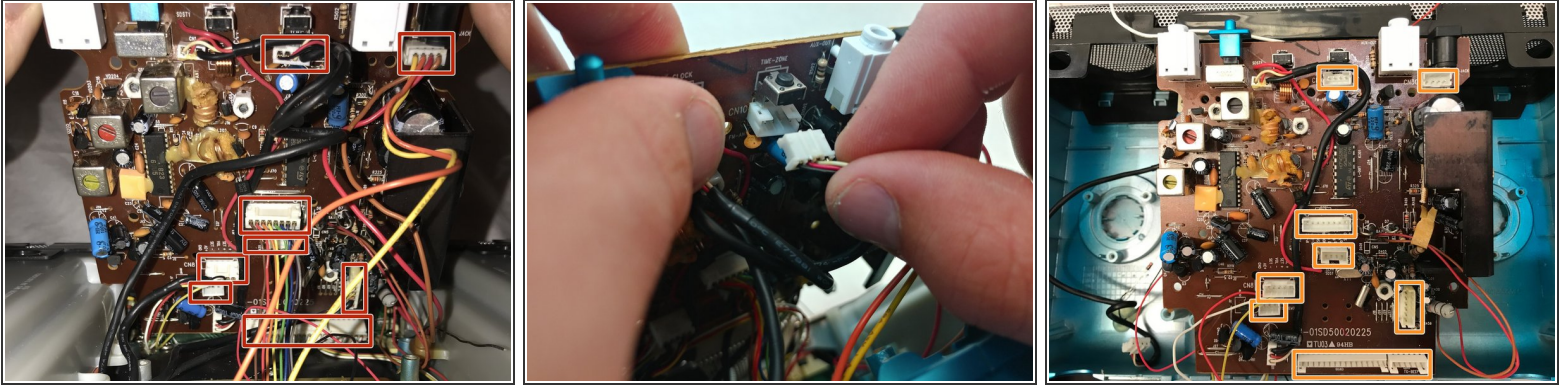
## Step 7



- To remove the motherboard, gently lift up from opposite sides.

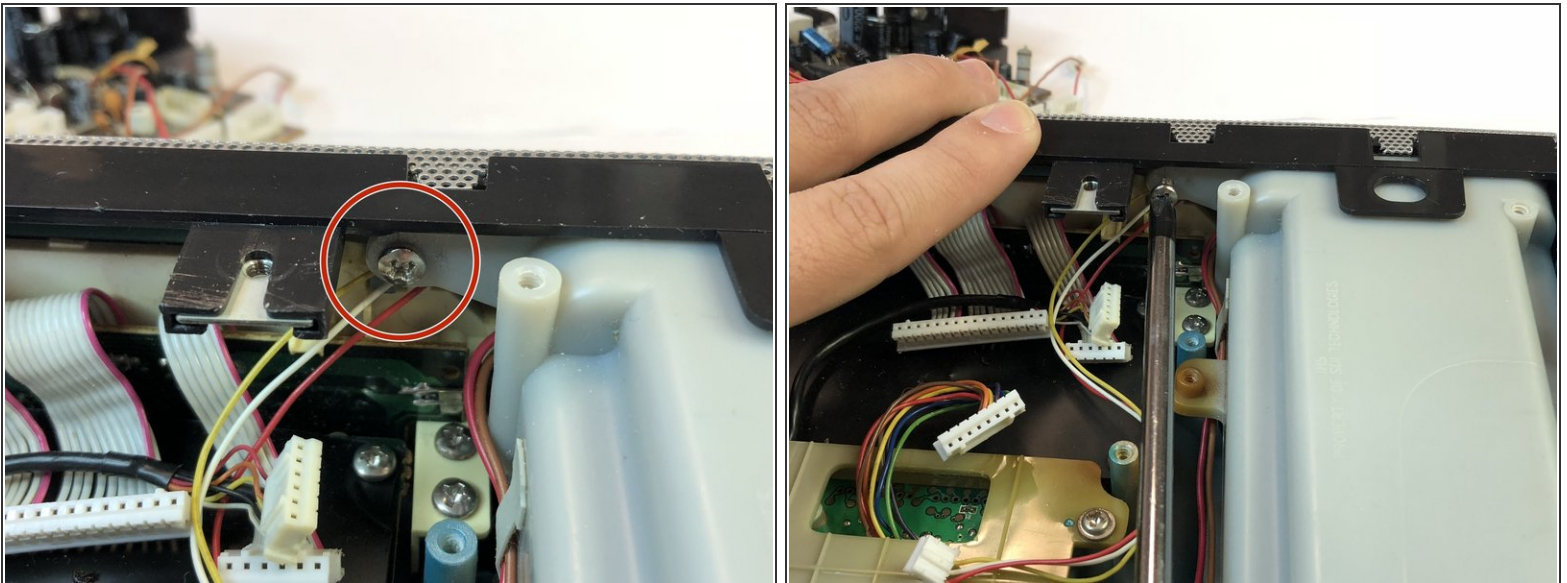
⚠ Be careful when lifting the motherboard. There are wires still connected to it on the backside.

## Step 8



- Carefully tilt the motherboard up from the front.
- Disconnect the 8 connections by gently pulling on them. Starting from the front and work your way backwards.
- All 8 connectors disconnected.

## Step 9



- Unscrew the screws holding the speakers onto the body. One on each side:
  - Two 14.3 mm Phillips #2 screws.



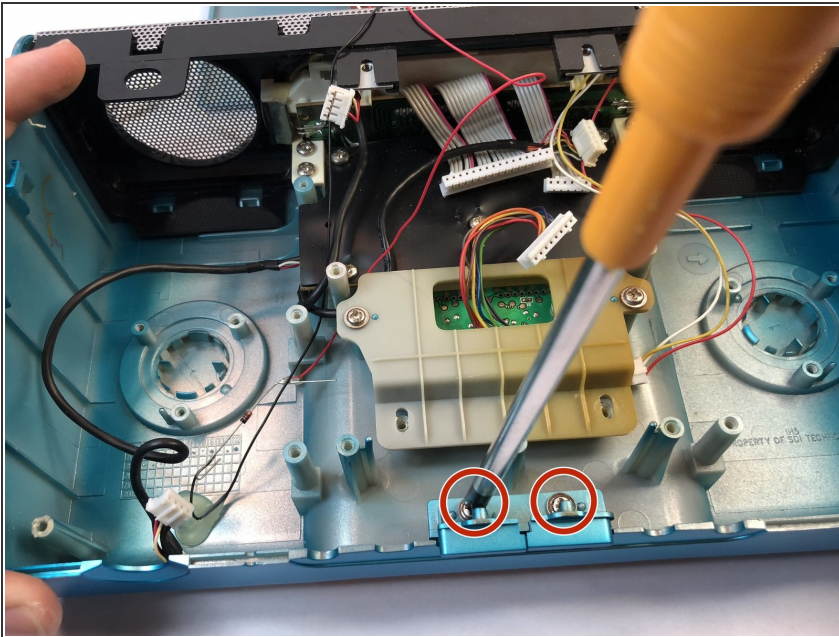
## Step 10



- To remove the speakers from the iHome, gently lift up the back of the speaker and pull towards you. These are very secure so minor shaking may help release the speaker.
- Repeat for the other side.

⚠ Be careful yanking on them, the speakers are connected together.

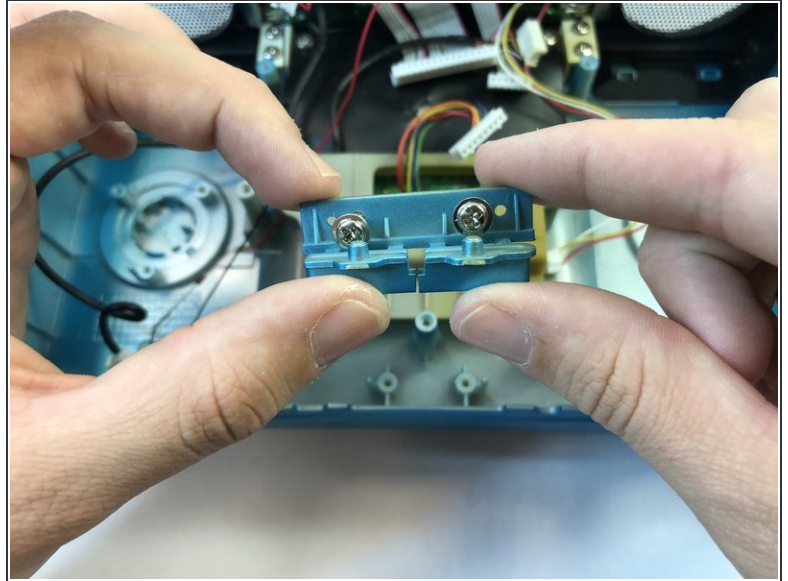
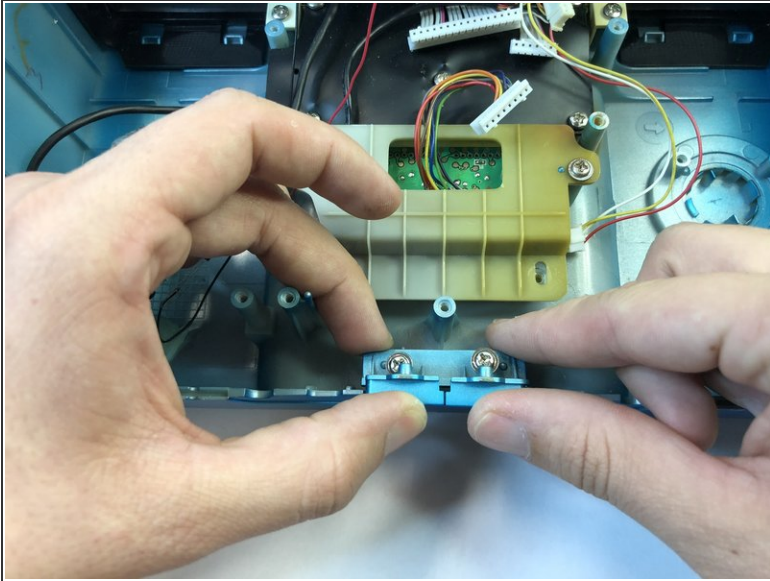
## Step 11 — Clock Adjustment Buttons



- At this point the buttons should be free of obstruction and easily accessible.
- Unscrew the two 11.9 mm Phillips #2 screws that are holding the plastic buttons onto the body.



## Step 12



- Once the screws have been removed, simply lift the buttons up and out of their seat.

To reassemble your device, follow these instructions in reverse order.