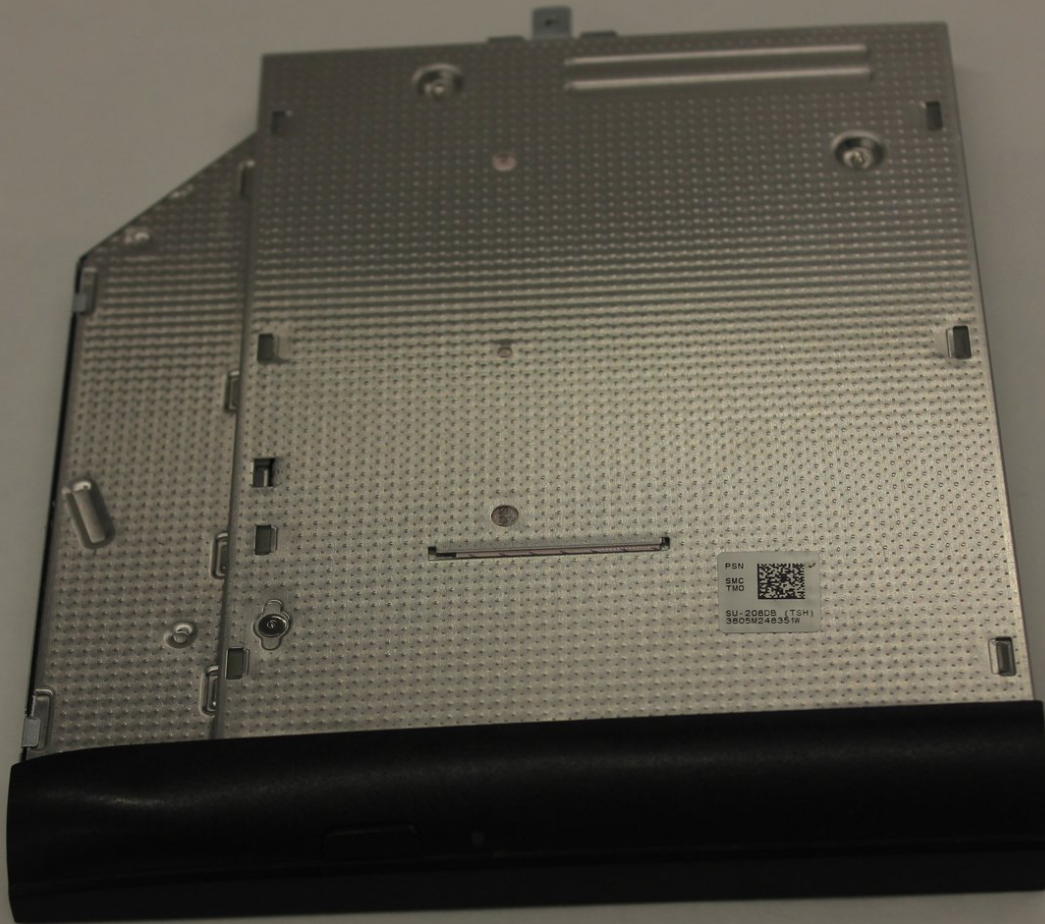




Toshiba Satellite C55-A5300 CD Drive Replacement

Instructions on how to replace the CD drive in a Toshiba Satellite C55-A5300 laptop.

Written By: David Burleson



INTRODUCTION

This guide will help you if you need to replace the CD Drive in your laptop. Replacing the CD Drive will fix any issues caused by an old or faulty CD Drive. It is very straightforward and can be completed regardless of technical knowledge or skill level.



TOOLS:

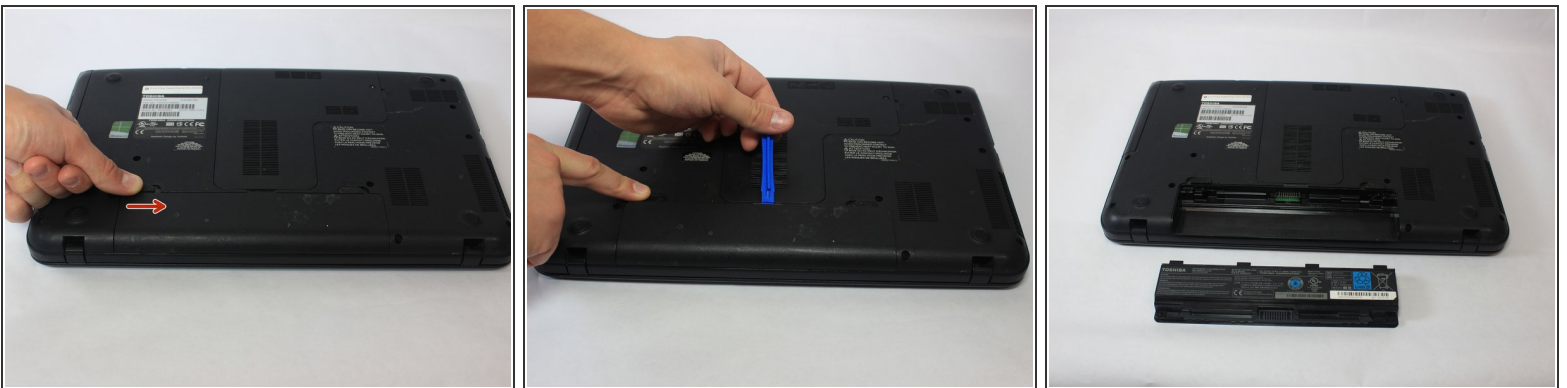
- [iFixit Opening Tools](#) (1)
 - [Phillips #1 Screwdriver](#) (1)
-

Step 1 — Battery



- With the Laptop off, turn it over.
- The battery is located next to the screen hinges.
- Move the locking tab located directly above the battery on the right side, all the way to the left. It will stay in place by itself.

Step 2



- Slide the tab identical to the first one on the right side above the battery pack to the right. This tab is spring loaded, so be sure to hold it.
- Insert your tool or your fingernail into the notch just above the center of the battery pack, and lift the battery pack out of the device.

Step 3 — Hard Drive



- Unscrew the screw on the back panel of the laptop covering the hard drive.

Step 4



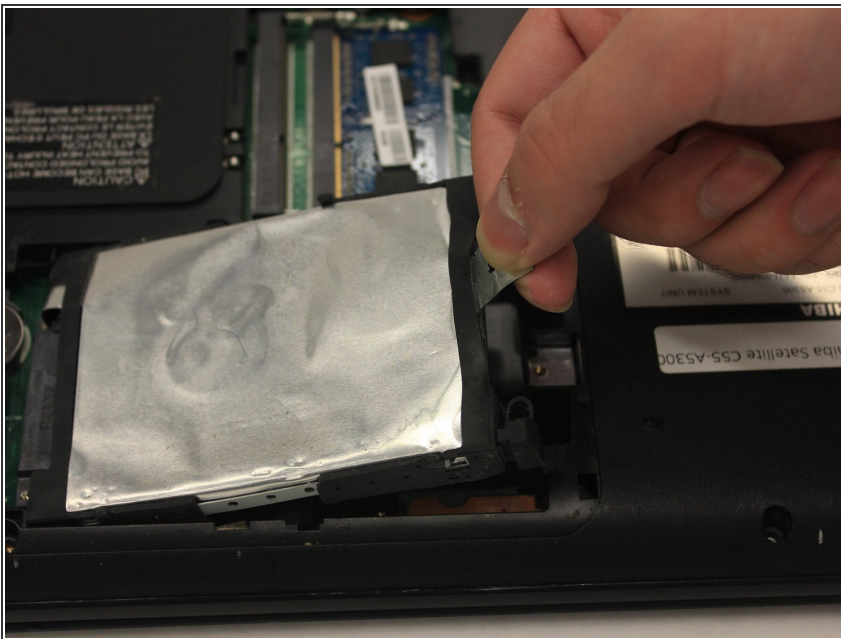
- Use the plastic opening tools to remove the panel.

Step 5



- Remove the screw next to the hard drive using the PH1 screwdriver.

Step 6



- Pull the silver tab connected to the hard drive up to take it out.

Step 7 — CD Drive



- Remove the screw to the top right of the hard drive using the PH1 screwdriver.

Step 8



- Use the plastic opening tool to wedge between the CD Drive and the laptop casing and gently pull it out.

To reassemble your device, follow these instructions in reverse order.