



Toshiba Satellite C55-A5300 Hard Drive Replacement

Instructions on how to replace the hard disk drive in a Toshiba Satellite C55-A5300 laptop.

Written By: David Burleson



INTRODUCTION

This guide will help you if you need to replace the hard drive in your laptop. Replacing the hard drive will fix any issues caused by a faulty hard drive. It is very straightforward and can be completed regardless of technical knowledge or skill level.



TOOLS:

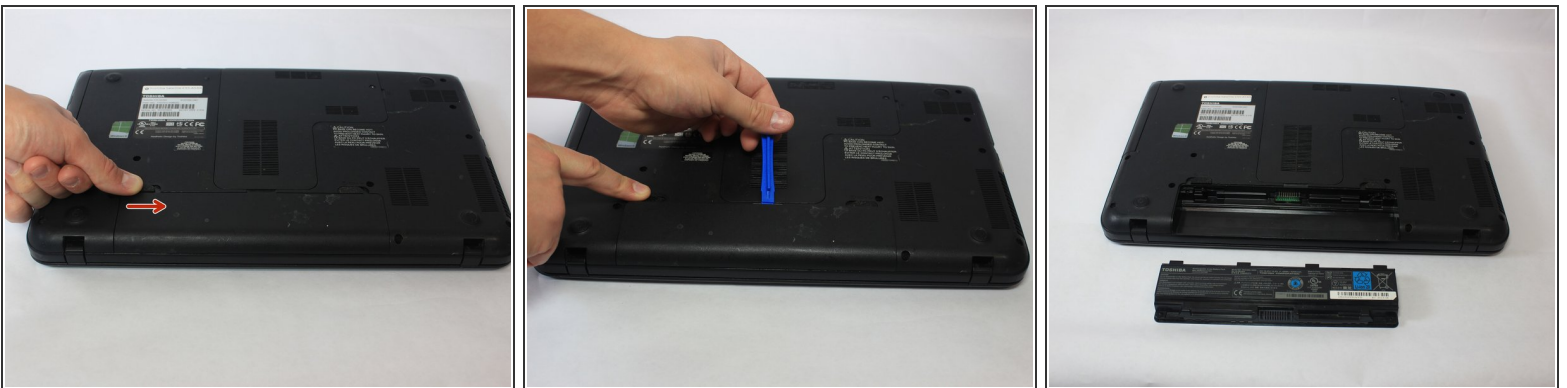
- [iFixit Opening Tools](#) (1)
 - [Phillips #1 Screwdriver](#) (1)
-

Step 1 — Battery



- With the Laptop off, turn it over.
- The battery is located next to the screen hinges.
- Move the locking tab located directly above the battery on the right side, all the way to the left. It will stay in place by itself.

Step 2



- Slide the tab identical to the first one on the right side above the battery pack to the right. This tab is spring loaded, so be sure to hold it.
- Insert your tool or your fingernail into the notch just above the center of the battery pack, and lift the battery pack out of the device.

Step 3 — Hard Drive



- Unscrew the screw on the back panel of the laptop covering the hard drive.

Step 4



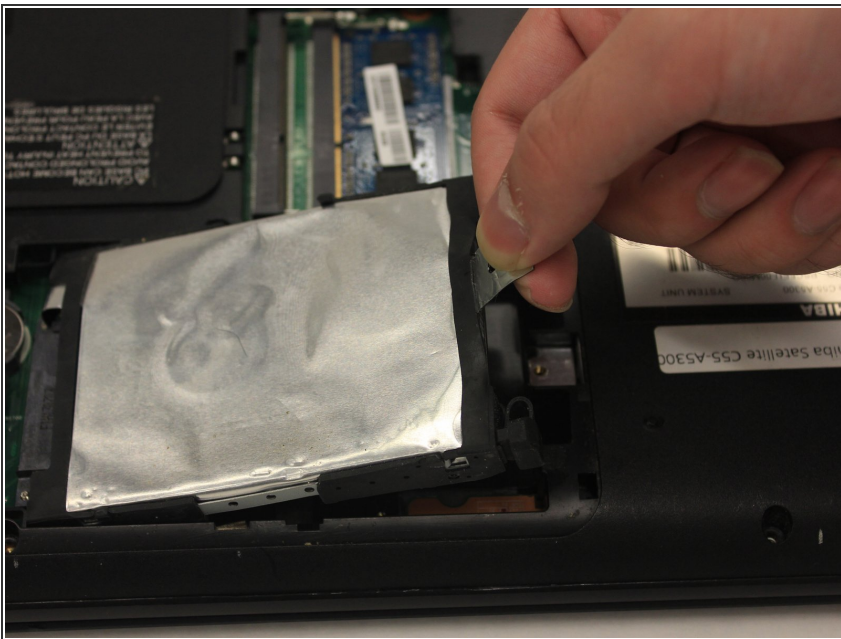
- Use the plastic opening tools to remove the panel.

Step 5



- Remove the screw next to the hard drive using the PH1 screwdriver.

Step 6



- Pull the silver tab connected to the hard drive up to take it out.

To reassemble your device, follow these instructions in reverse order.