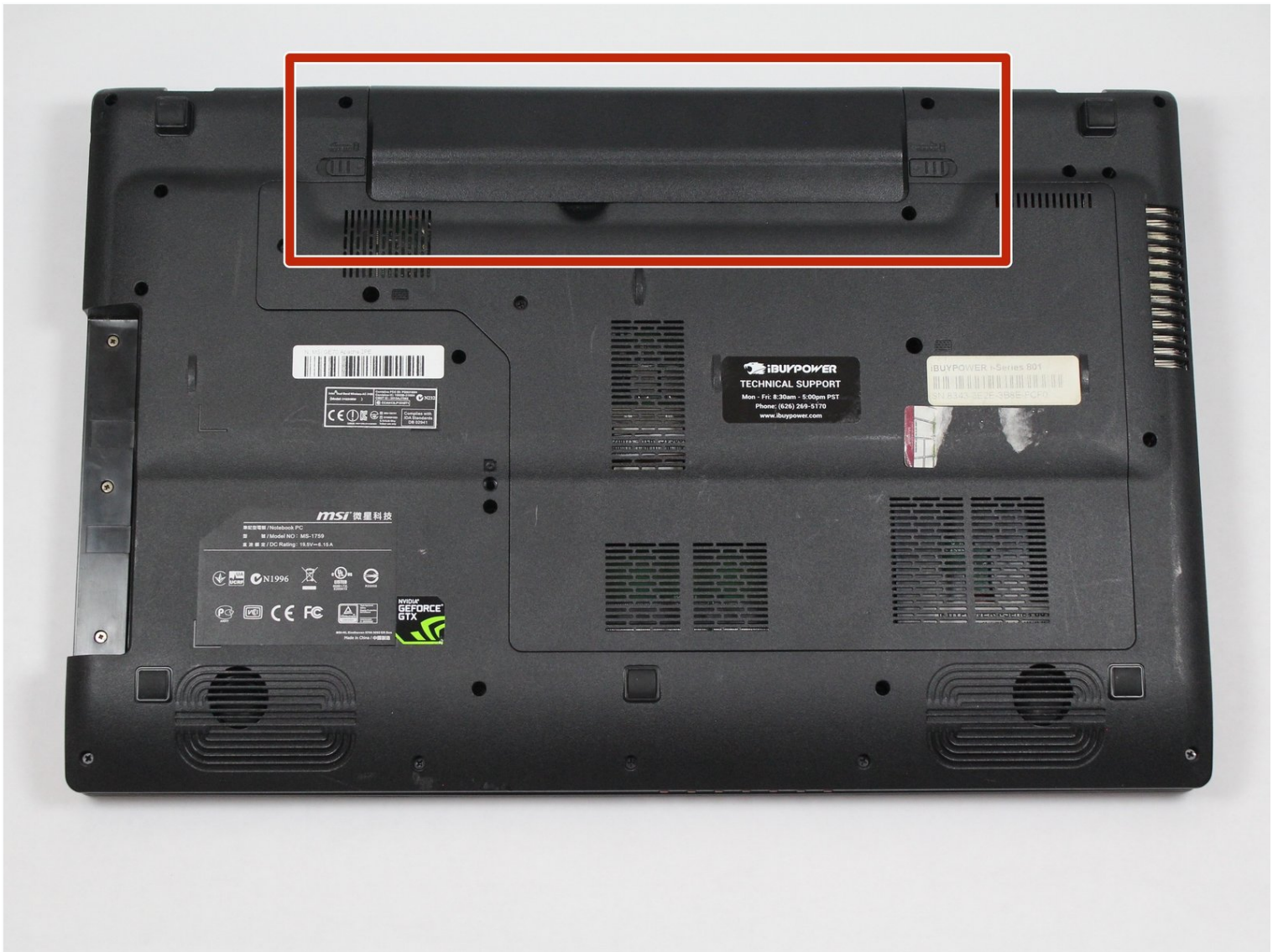




# MSI GE70 2PE Apache Pro Battery Replacement

This guide can be used to help you replace a...

Written By: Joseph Welch



# INTRODUCTION

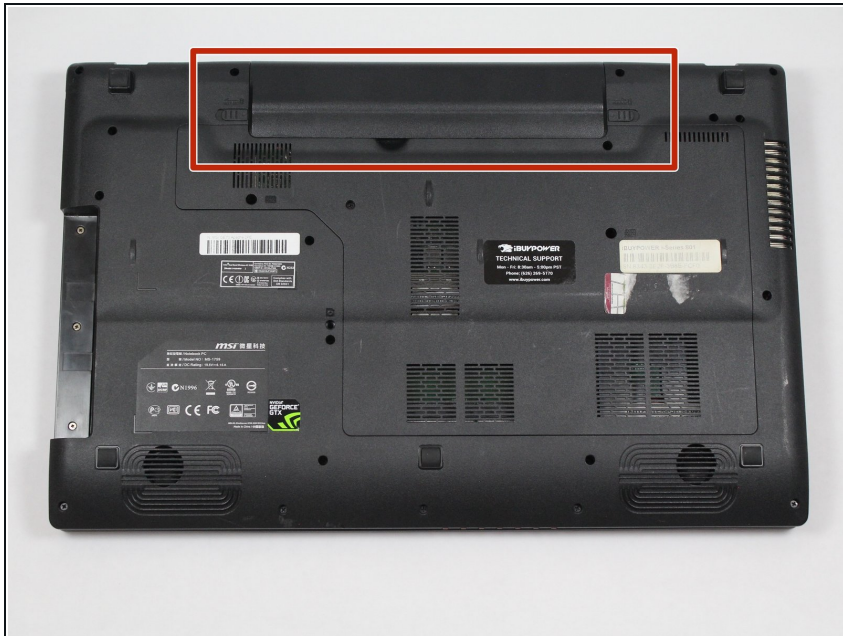
This guide can be used to help you replace a dead or faulty battery in your MSI GE70 2PE Apache Pro. This is a straight-forward repair that requires no use of tools.



## PARTS:

[MSI BTY-S14 Battery](#) (1)

### Step 1 — Battery



- Turn over the laptop so the battery compartment is facing up.

## Step 2



- Push the right latch all the way to the right until it clicks into place.

## Step 3



- Pull and hold the left latch.

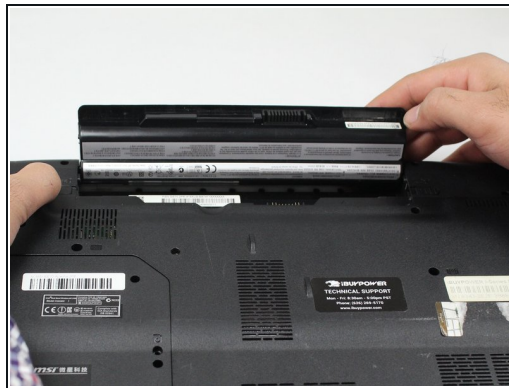


## Step 4



- Pry the battery upward using the indent.

## Step 5



- Continue to pull the battery until it is free of the casing.

To reassemble your device, follow these instructions in reverse order.