



Wacom Cintiq 24HD Display Control Buttons Replacement

How to replace the display control buttons on Wacom Cintiq 24HD.

Written By: Jay Sung



INTRODUCTION

Frequent use can damage or jam the buttons on the Cintiq 24HD over time. You can not properly adjust the display of the Cintiq 24HD without the buttons . This guide will walk you through replacing the display control buttons on the Cintiq 24HD.

TOOLS:

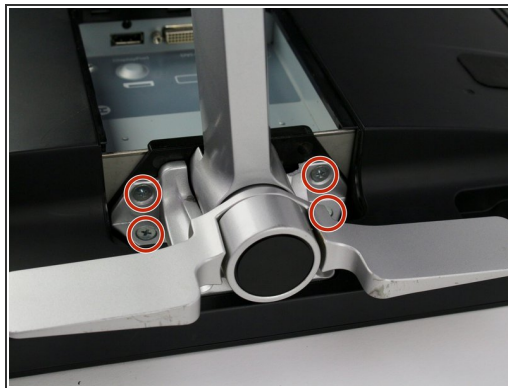
- [Phillips #2 Screwdriver](#) (1)
 - [iFixit Opening Tools](#) (1)
 - [Phillips #1 Screwdriver](#) (1)
-

Step 1 — Stand



- Unplug any cables from the USB, power, display or DVI-D ports by gripping the cord by the connector and pulling straight out of the port.
- ⚠ Unplugging the cables by pulling on the cord or pulling at an angle can damage the cable or connector.

Step 2



- Place the device screen down on a flat surface.
- Remove eight 10mm Phillips #2 screws (four on each leg of the stand) by turning the screwdriver counterclockwise.

Step 3



- Lift the stand up and away from the rest of the device so the legs separate from the mounting plate.

Step 4 — Back Panel



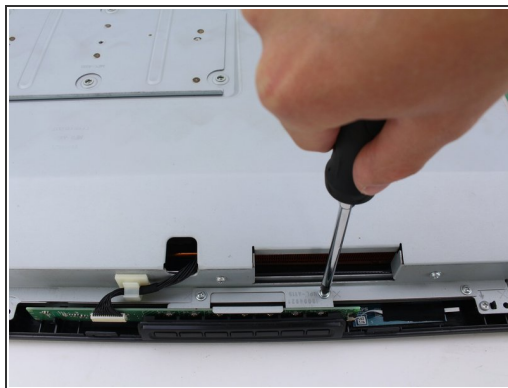
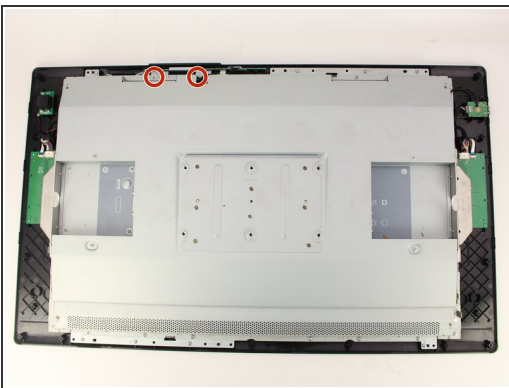
- Remove eighteen 10.2mm Phillips #1 screws from the perimeter of the back panel by turning the screwdriver counterclockwise.
 - Remove one 11.9mm Phillips #1 screw from the center of the back panel.
 - Remove two 10.2mm Phillips #1 screws from underneath hinged panels in the bottom right and left corners.
- i** Our device does not include the cover panels for the USB, DVI-D, and power ports. You must first remove these cover panels shown in green in order to remove the back panel.

Step 5



- Lift the back panel up by a corner and insert a plastic opening tool in the gap.
- Slide the tool along the gap around the perimeter of the device while lifting to unlatch the back panel.
- ⓘ The latches on the back panel will make loud clicking noises when opening.
- Remove the panel by lifting it up and off of the device.

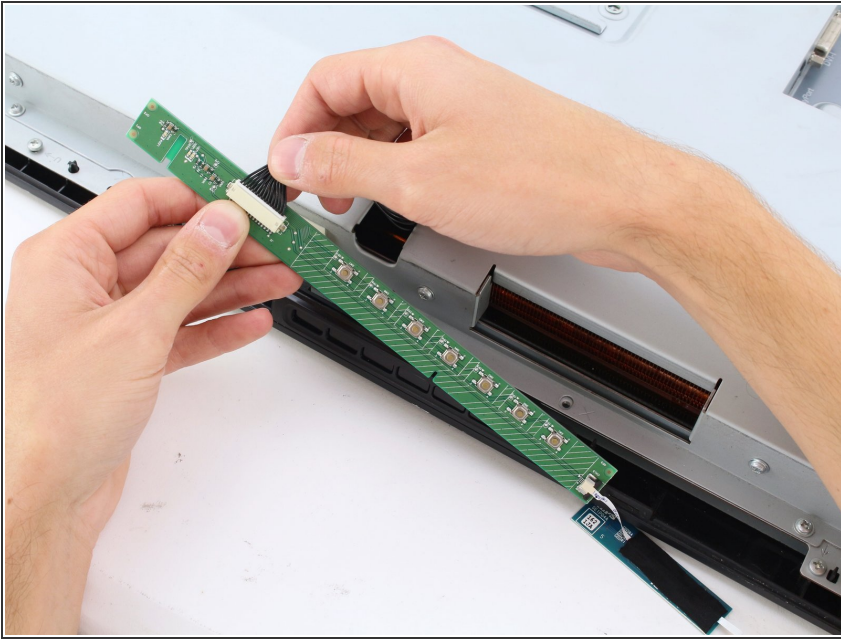
Step 6 — Display Control Buttons



- Remove the two 8mm screws from the metal button plate using a Phillips #2 screwdriver and by turning clockwise.
- Remove metal holding plate by lifting up and off of the button board.

This document was generated on 2020-11-28 06:57:18 AM (MST).

Step 7



- Remove the button board by pinching the wiring close to the connector and gently pulling straight out from the port.

Step 8



- Remove the button cover by pushing the buttons out of their holes and pulling the cover up.

To reassemble your device, follow these instructions in reverse order.