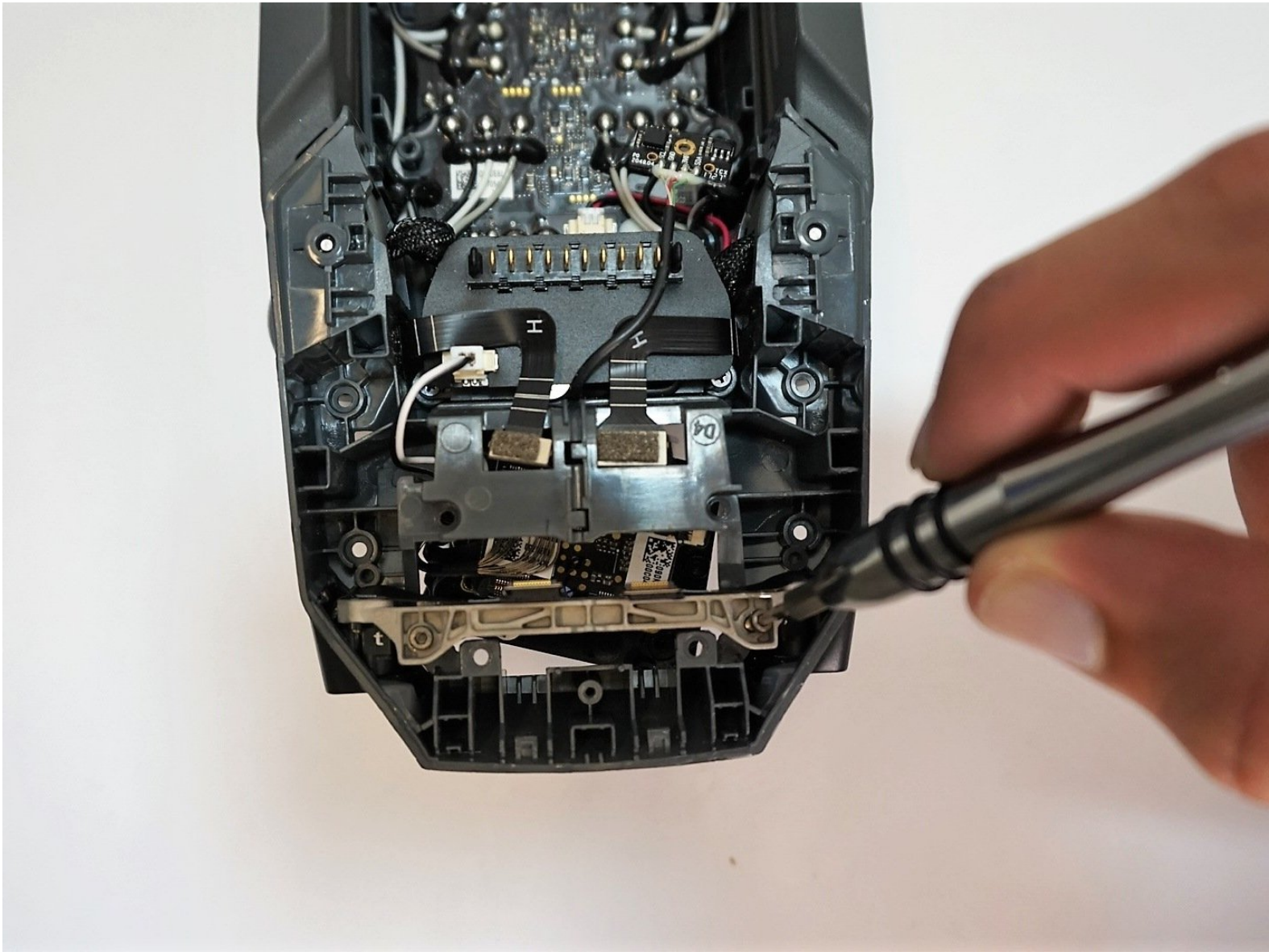




DJI Mavic Pro Front Vision Replacement

How to replace the Front Vision on a DJI Mavic Pro M1P.

Written By: Kyle Kelser



INTRODUCTION

This guide is for removing the DJI Mavic Pro Front Vision. To get to the front vision, you will need to remove the battery, upper shell, and gimbal first. In order to remove the gimbal in step 8, you will need to scrape some plastic adhesive off your device. Tweezers and three different sized screwdrivers are required for this guide.



TOOLS:

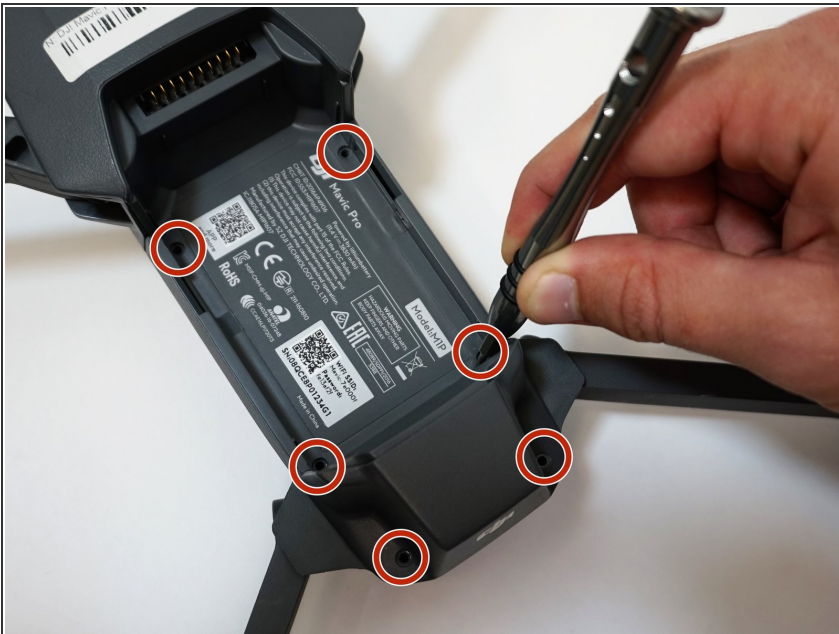
- [Spudger](#) (1)
- [JIS #000 Screwdriver](#) (1)
- [Tweezers](#) (1)
- [1.5mm Hex Screwdriver](#) (1)
- [JIS #00 Screwdriver](#) (1)
- [JIS #0 Screwdriver](#) (1)

Step 1 — Battery



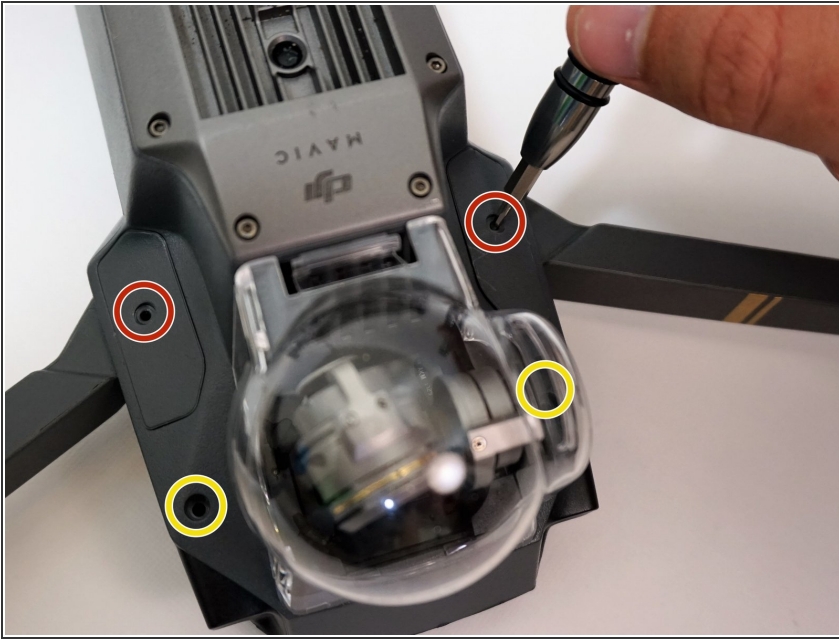
- Grab both sides of the battery.
- Pinch the releasing buttons on both sides of the battery.
- Lift the battery up and out.

Step 2 — Upper Shell



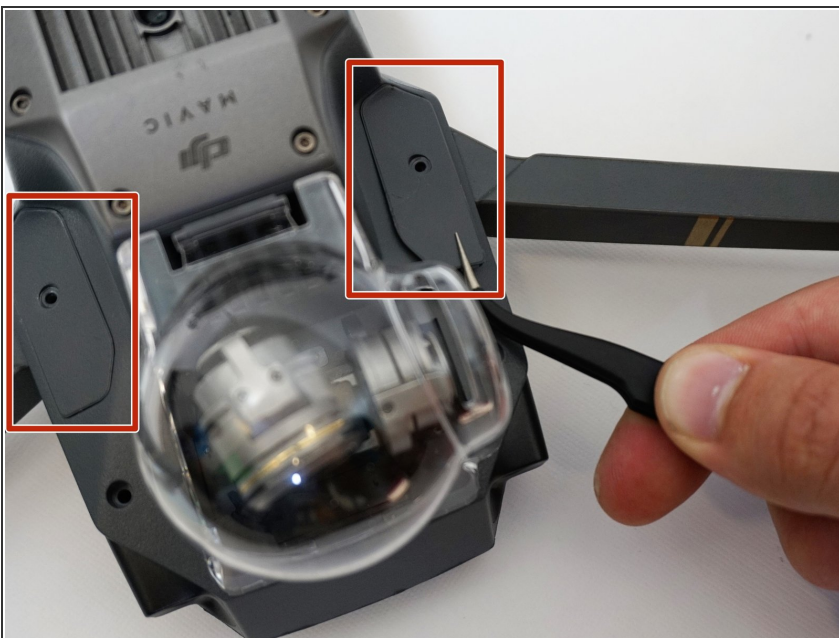
- Remove the six 5mm 1.5 Hex screws by turning the screwdriver counterclockwise.

Step 3



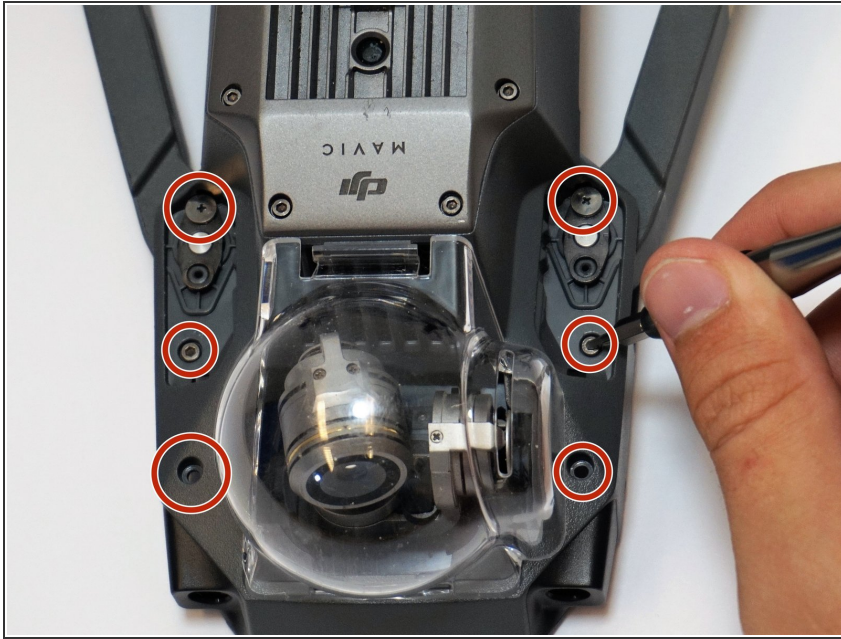
- Flip the drone over so that the gimbal is facing up.
- Remove the two 4mm 1.5 Hex screws near the gimbal case by turning the screwdriver counterclockwise.
- Remove the two 5mm 1.5 Hex screws near the gimbal case by turning the screwdriver counterclockwise.

Step 4



- Remove the two small panel pieces near the gimbal case with the tweezers.

Step 5



- Remove the six 5mm 1.5 Hex screws that are under the panel pieces by turning the screwdriver counterclockwise.

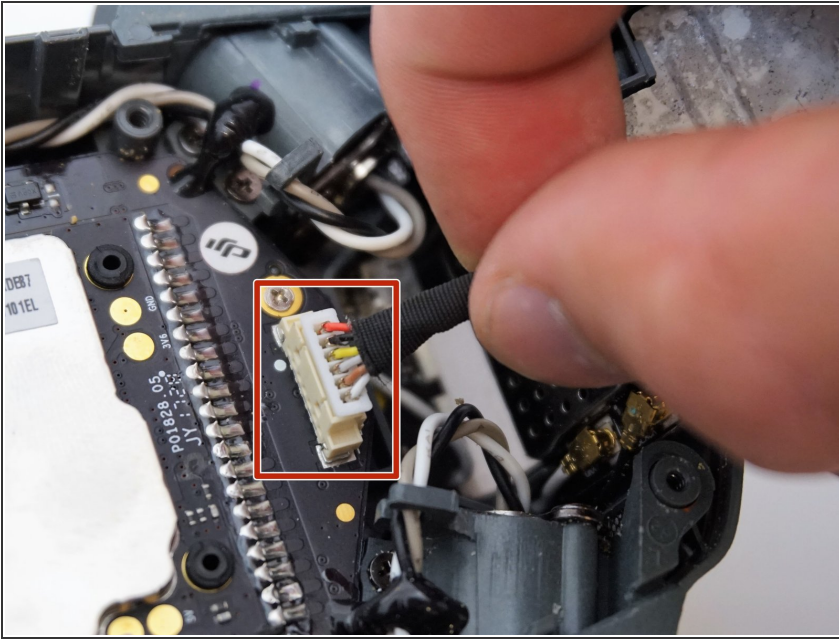
Step 6



- Flip the drone back over so the upper shell is facing up.
- Pry off the upper shell with a nylon spudger.

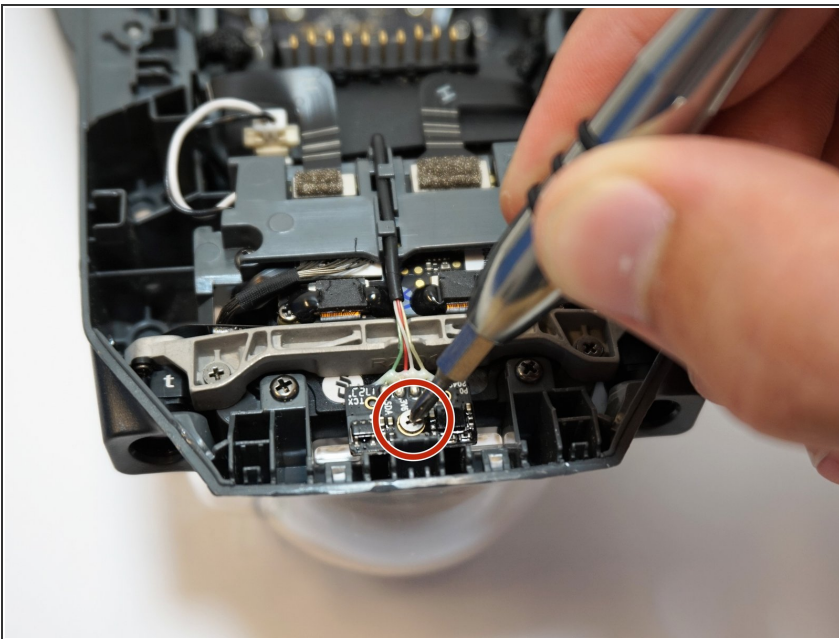
⚠ Be careful when prying with the spudger because you could damage the upper shell's plastic tabs.

Step 7



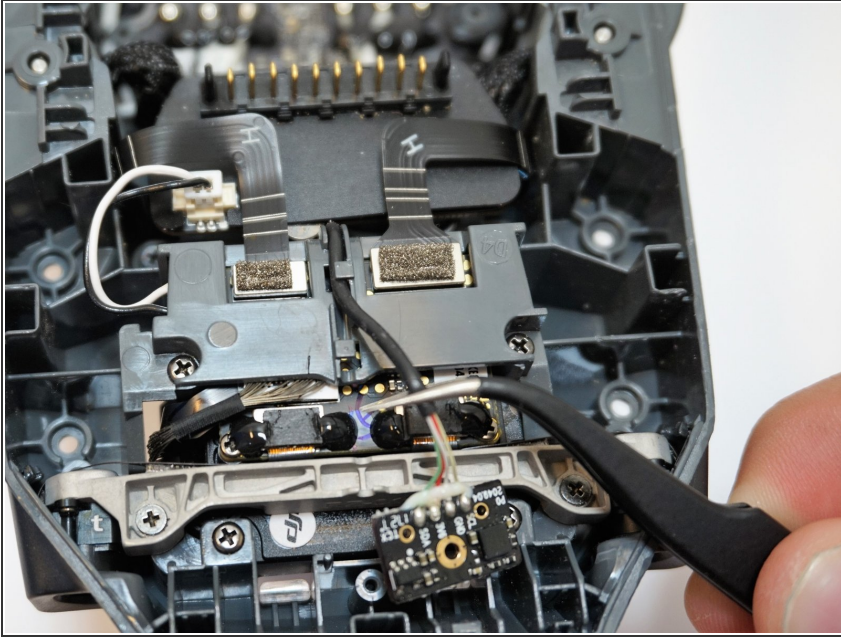
- Remove the white connector at the back of the flight controller board by gently pulling at the base.

Step 8 — Gimbal/Camera



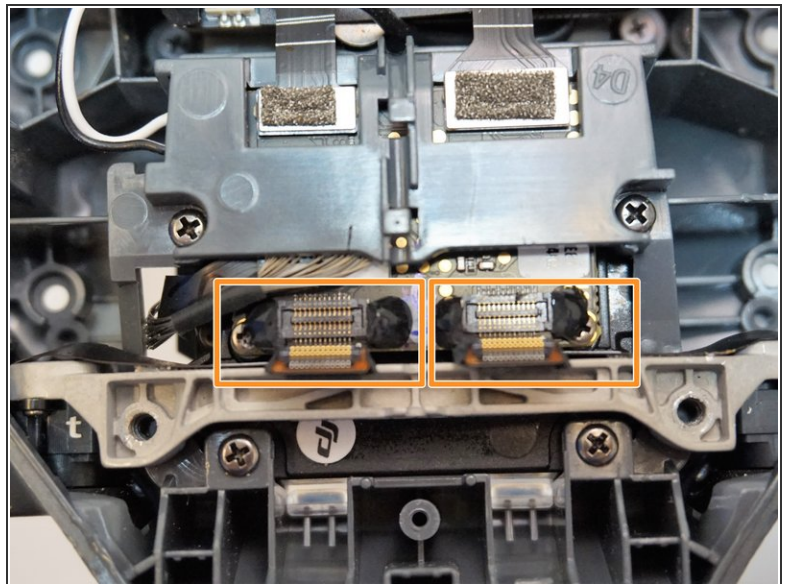
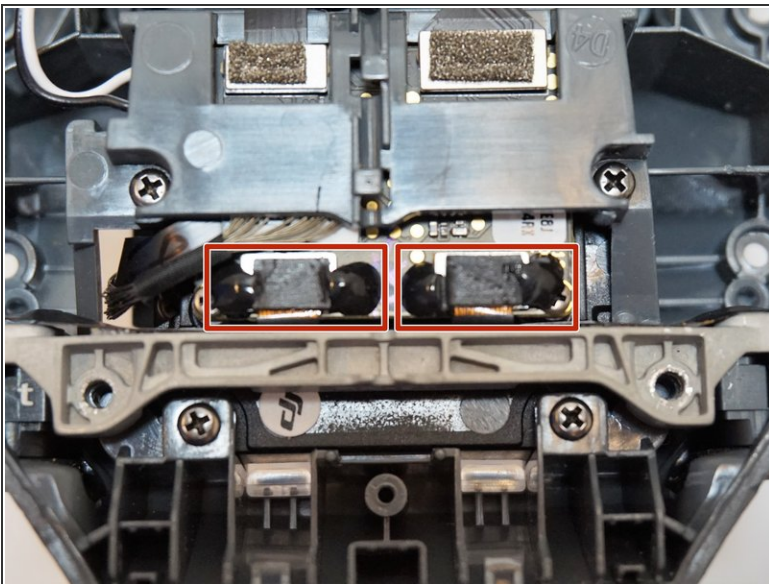
- Remove the one 5mm JIS #0 screw from the small micro controller board at the front of the DJI Mavic Pro by turning counterclockwise.

Step 9



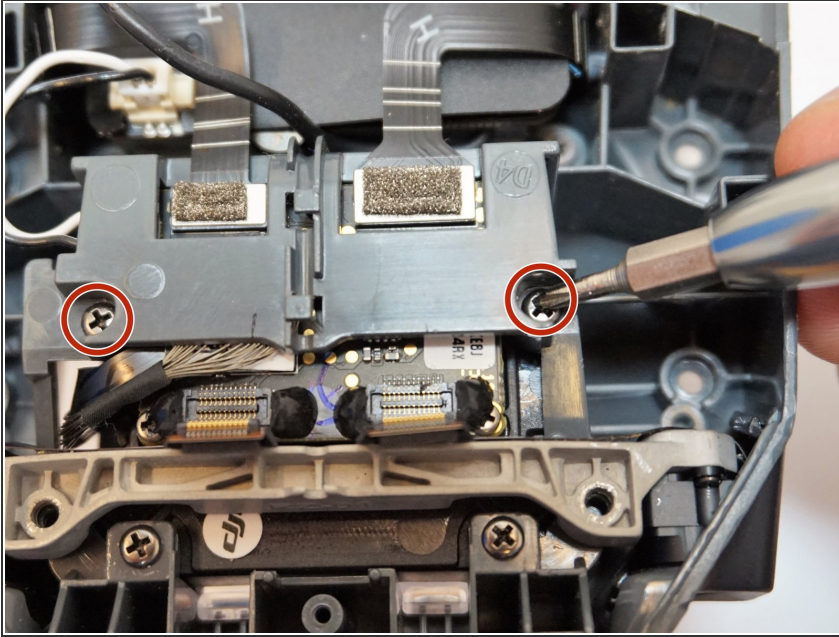
- Pull the cord and micro controller board away from the front of the DJI Mavic Pro using tweezers.

Step 10



- Expose the two small ZIF connectors near the front of the board by removing the plastic coverings.
- Then, remove the two ZIF connectors under the coverings using a nylon spudger.

Step 11



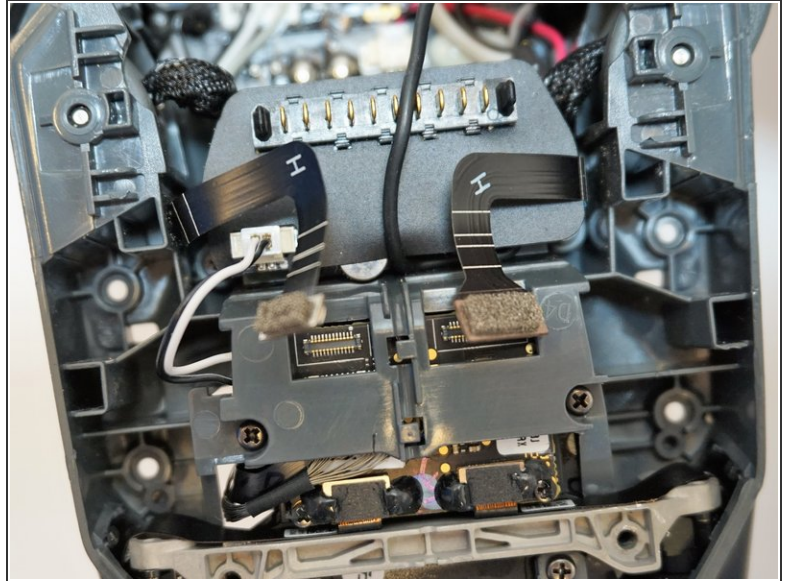
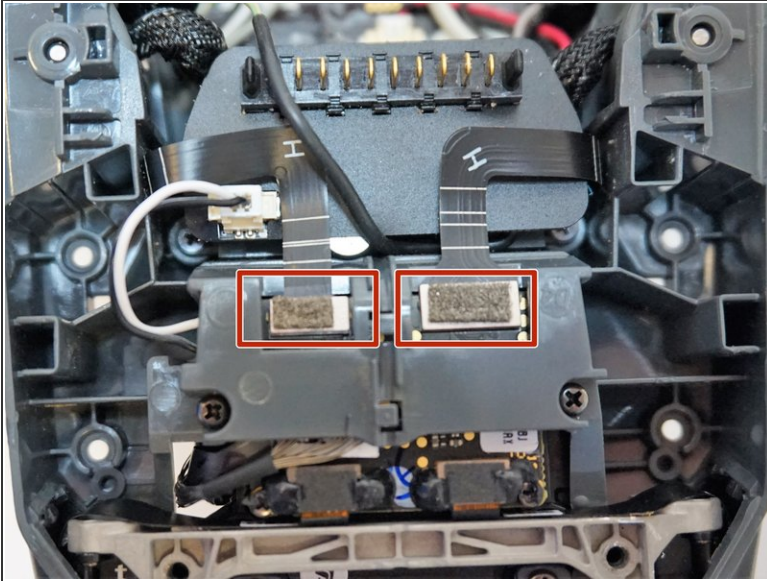
- Remove two 6mm JIS #00 screws from the plastic board cover at the front of the DJI Mavic Pro.

Step 12



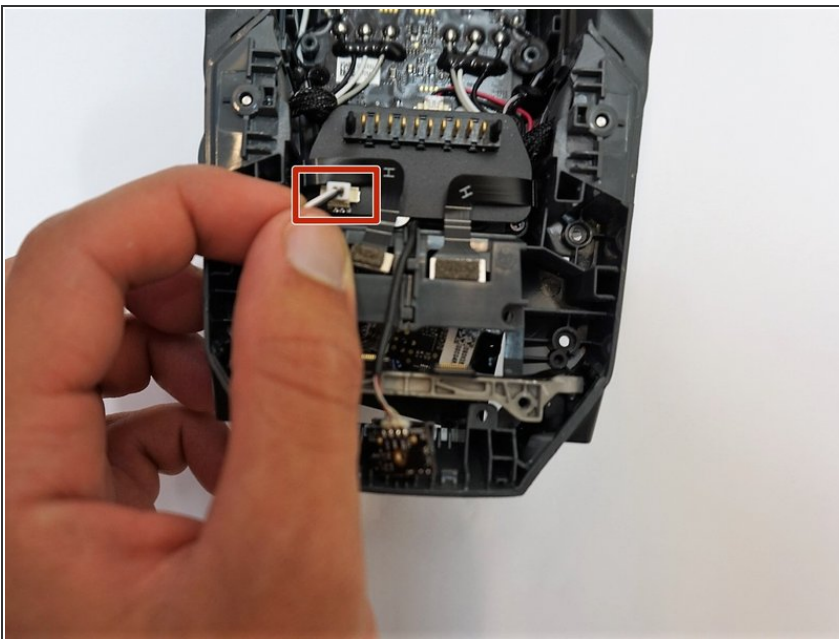
- Flip the DJI Mavic Pro over.
- Gently press the latch for the Gimbal cover.
- Pull the cover off.

Step 13



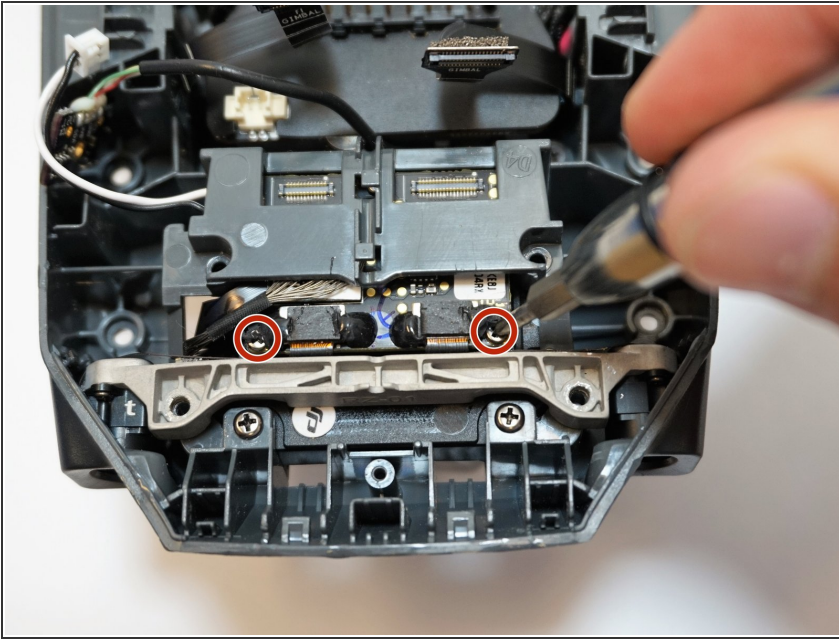
- Flip the DJI Mavic Pro back over, with its top side facing up.
- Remove the two ZIF connectors located behind the plastic covers by using a nylon spudger.

Step 14



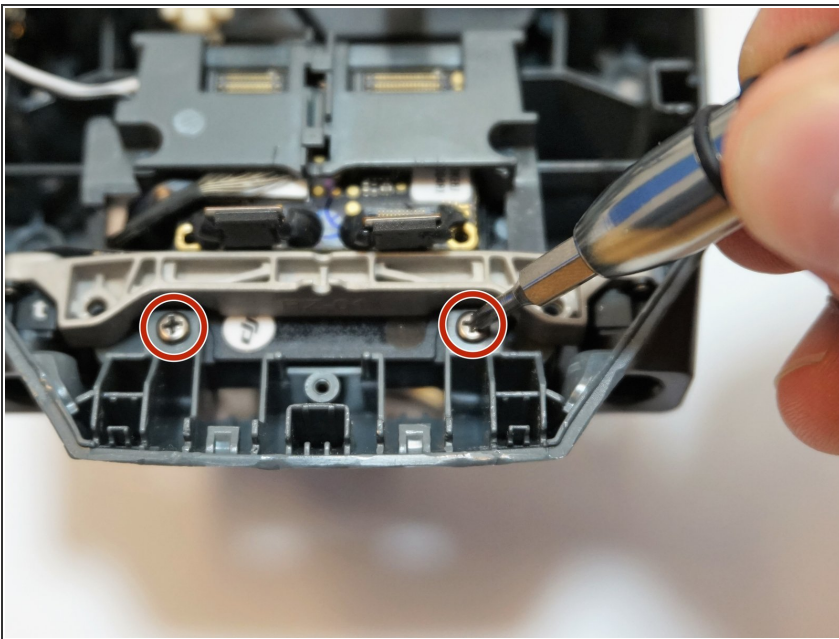
- Gently remove the power cable connector located to the left, behind the gimbal board, by pulling up on the white base.

Step 15



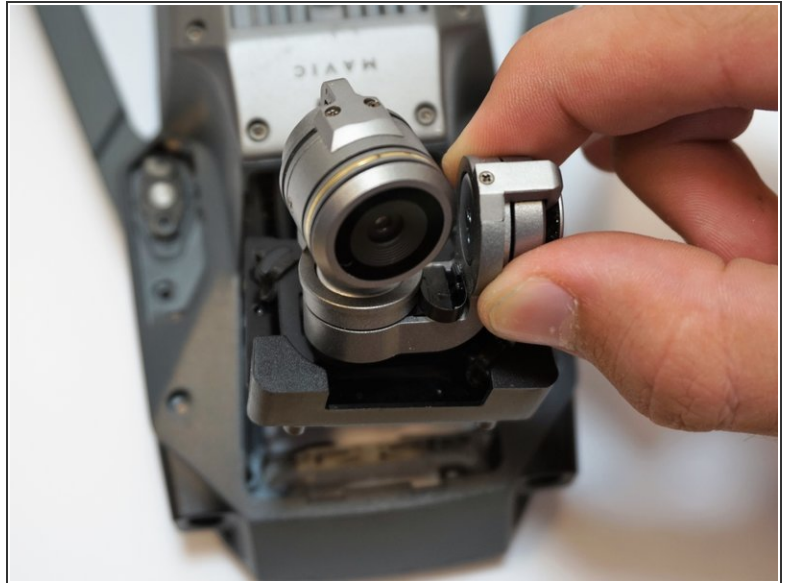
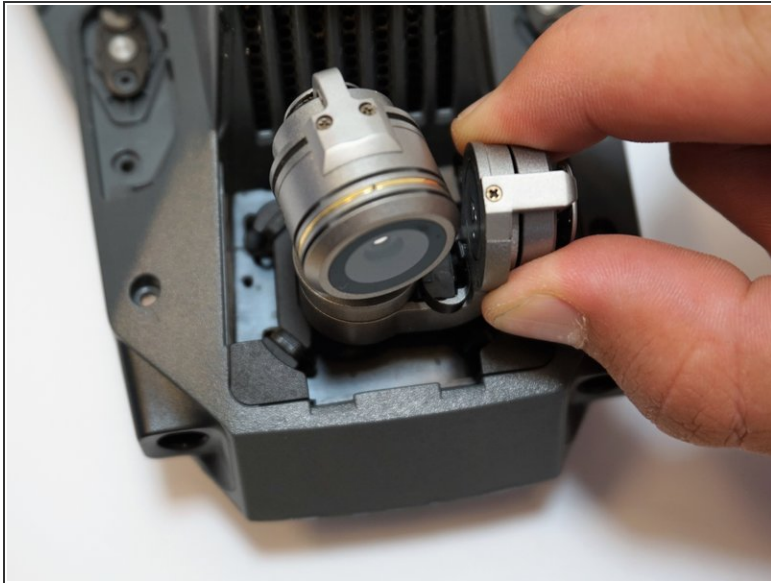
- Scrape away the plastic adhesive covering the two 5mm JIS #000 screws connected to the gimbal board.
- Remove the two 5mm JIS #000 screws from the gimbal board by turning the screwdriver counterclockwise.

Step 16



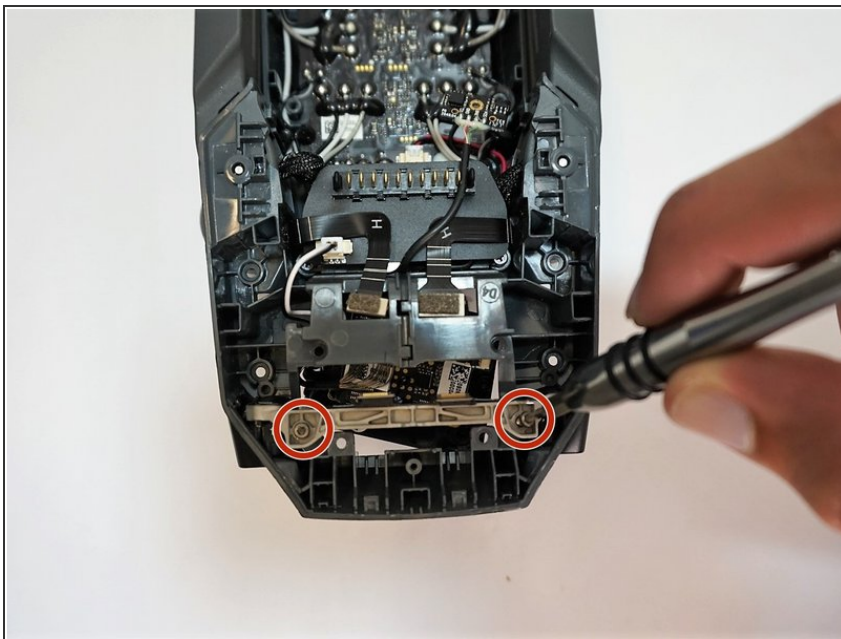
- Remove the two 7mm JIS #00 screws at the very front of the DJI Mavic Pro by turning the screwdriver counterclockwise.
- **Careful** when removing these screws the camera or whatever remains of your camera assembly may drop

Step 17



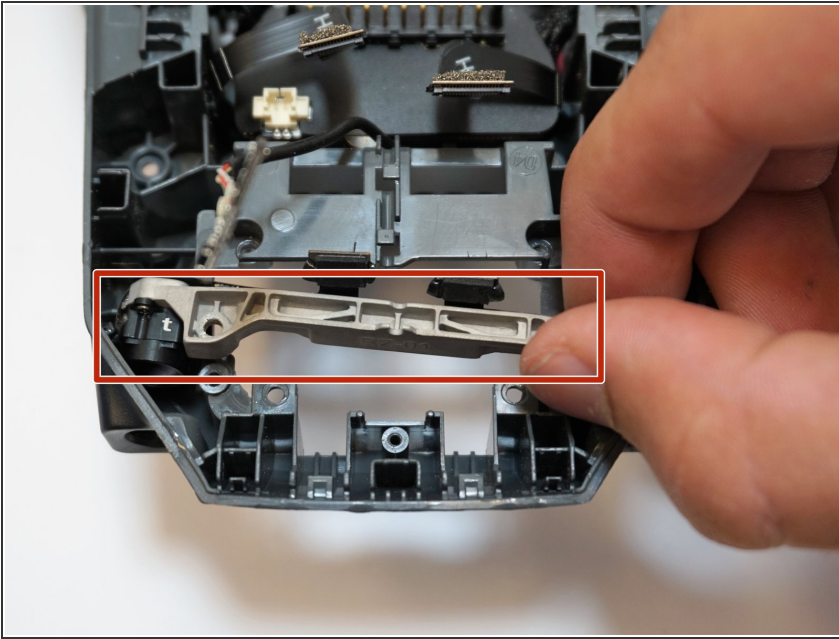
- Flip the DJI Mavic Pro over, with the camera facing you.
- Gently pull the gimbal/camera assembly up and out.

Step 18 — Front Vision



- Remove the two 6mm JIS #0 screws by turning counterclockwise.

Step 19



- Remove the front vision piece by pulling the piece up and away from the drone body.

To reassemble your device, follow these instructions in reverse order.