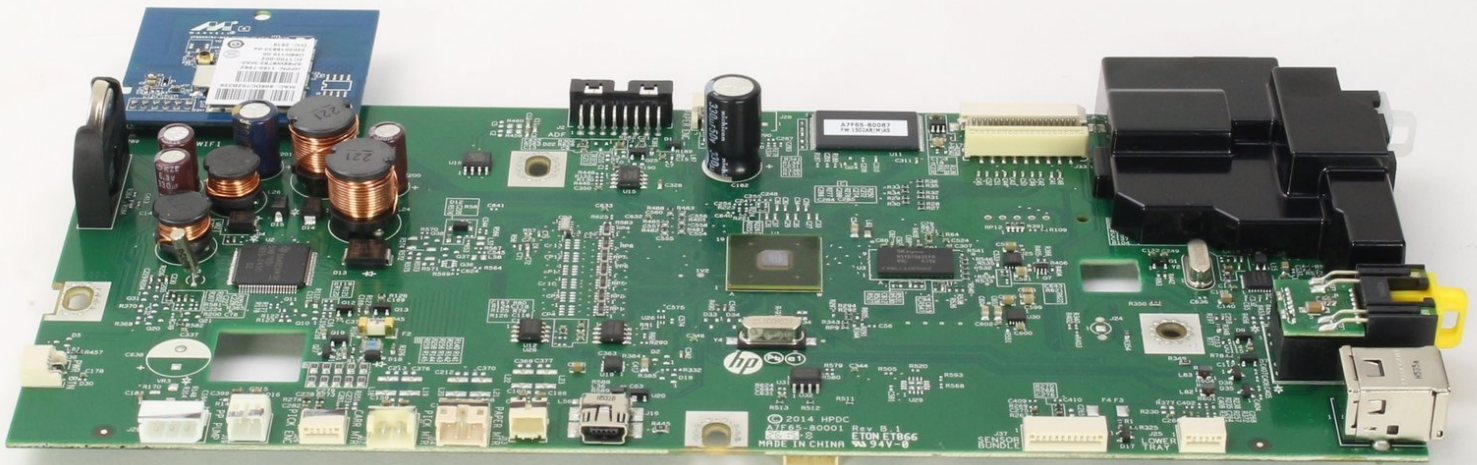




HP Officejet Pro 8625 Motherboard Replacement

Replace your motherboard if your HP Officejet Pro 8625 does not power on.

Written By: Cam Engle



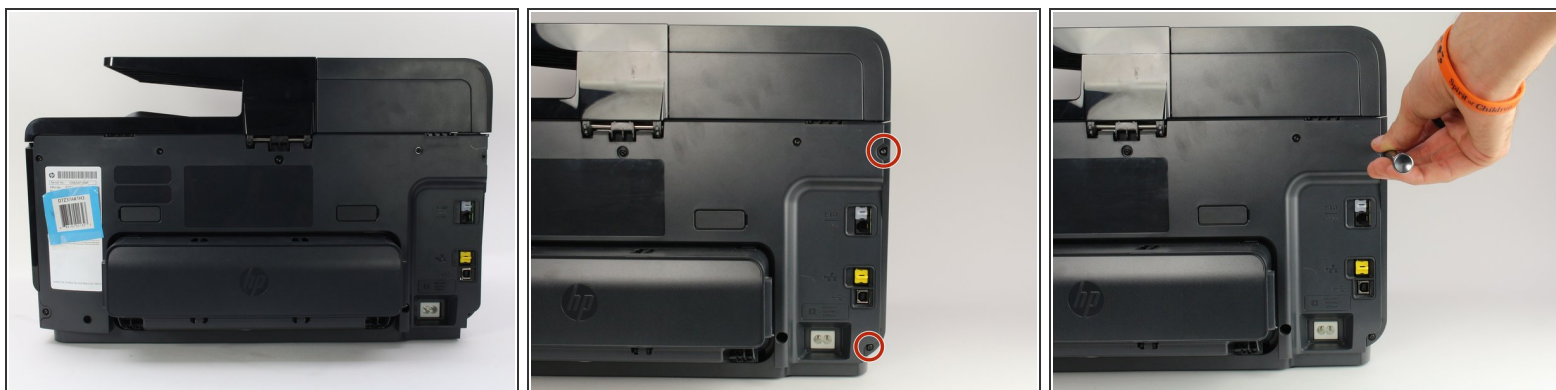
INTRODUCTION

If your HP Officejet Pro 8625 is having trouble turning on, you can replace the motherboard using this guide. You will need a TR9 Torx screwdriver for each screw in this guide. The steps are not very difficult but be careful when removing the connectors.

TOOLS:

- [T9 Torx Screwdriver](#) (1)
-

Step 1 — Left Side Panel



- Remove the two 11.6 mm T9 screws from the right side of the back of the printer.

Step 2



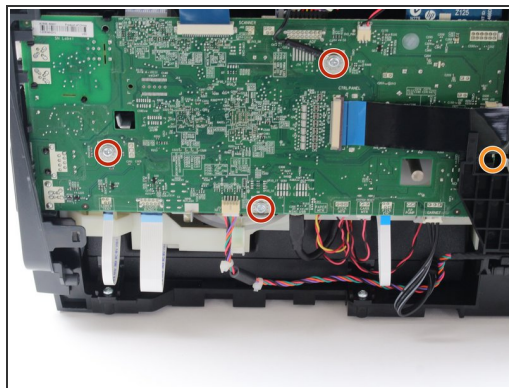
- Pull down the front panel to expose the screws on the front.
- Remove the one 11.6 mm T9 screw on the left side of the front face.

Step 3



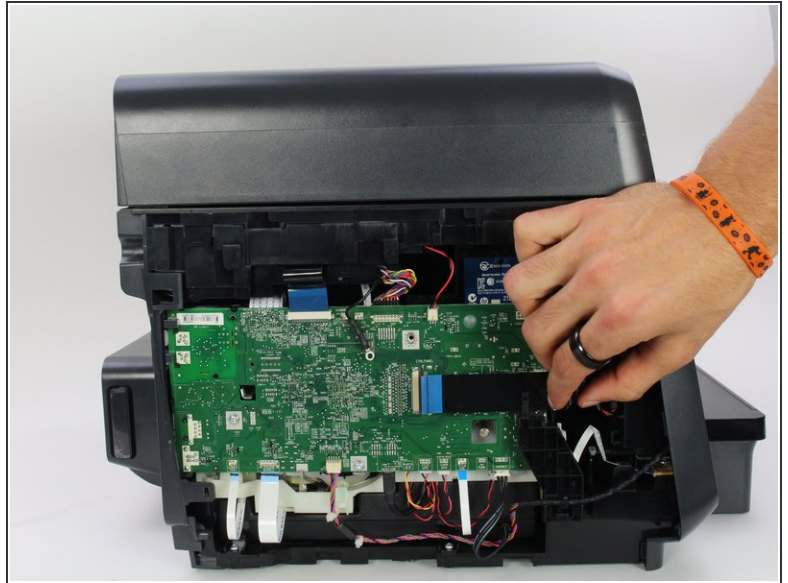
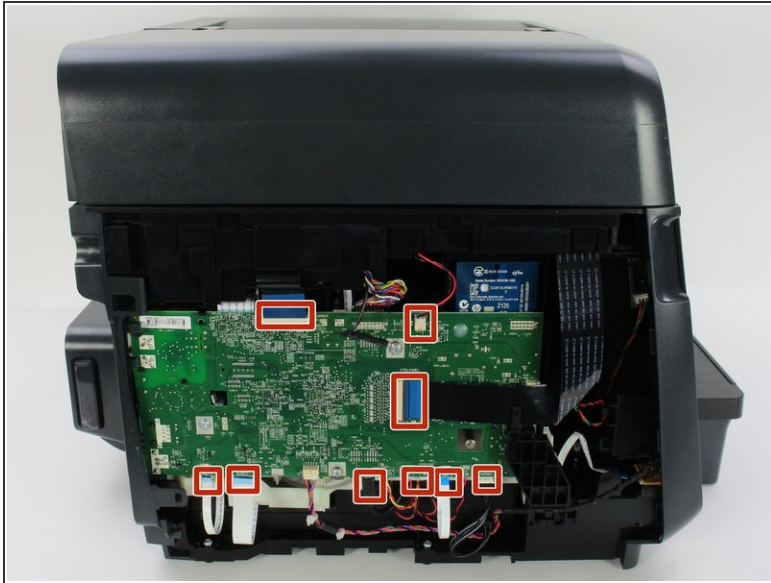
- Remove the side panel by pushing down and towards the back.
- ⓘ This step may be easier if the printer is laid on its side with the left side panel facing up.

Step 4 — Motherboard



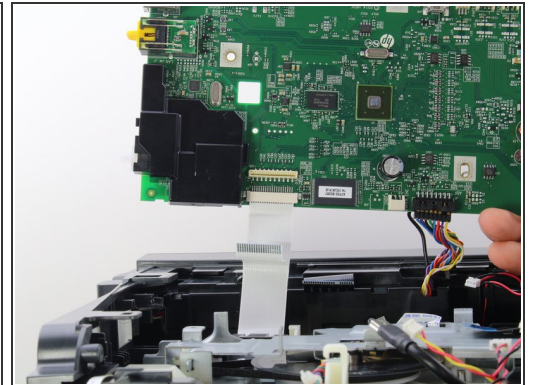
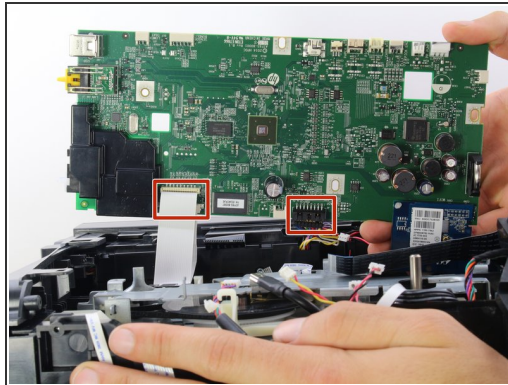
- Remove the three 5.3 mm T9 screws from the motherboard.
- Remove the one 6.7 mm T9 screw from the motherboard.

Step 5



- Remove the connectors from the front and sides of the motherboard by pulling straight away from the connection.

Step 6



- Lift the bottom of the motherboard and remove the connectors from the back.
- Remove the motherboard.
- ⓘ There are two white connectors underneath the motherboard, remove them separately.

To reassemble your device, follow these instructions in reverse order.