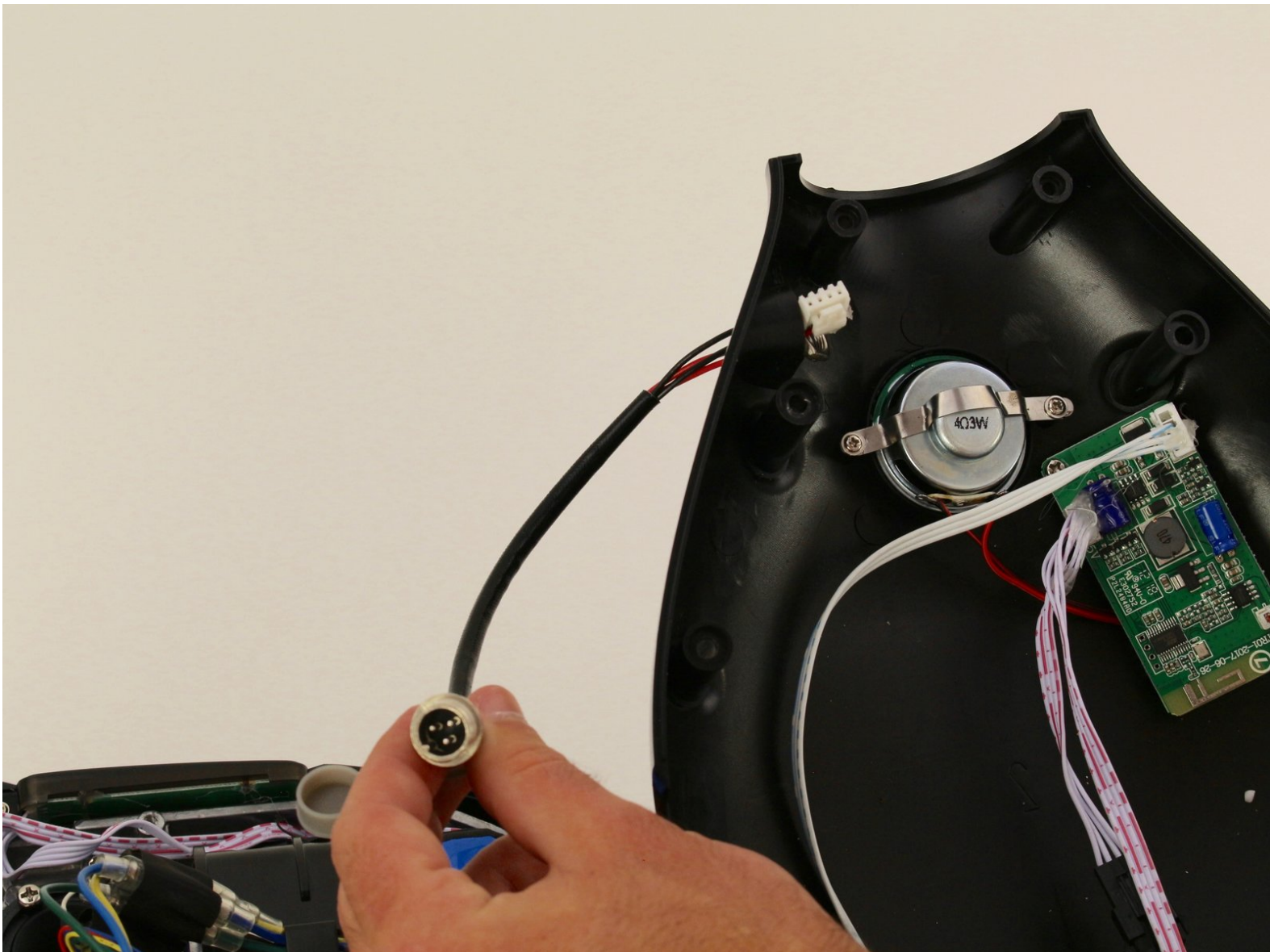




Hover-1 H1 Charging Port Replacement

How to replace the charging port of a Hover-1 H1 hoverboard.

Written By: Madeline David



INTRODUCTION

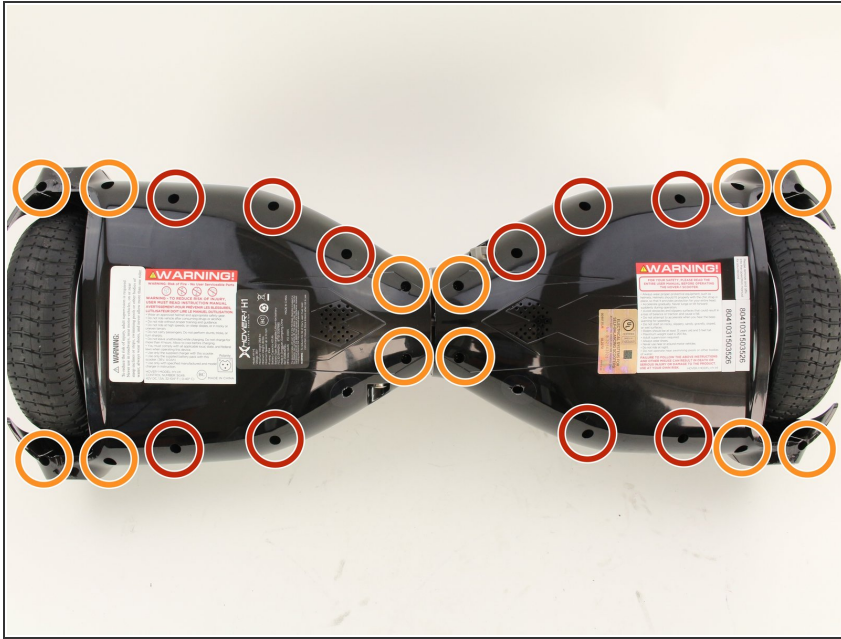
Replacing the charging port of your Hover-1 H1 hoverboard will help to solve charging problems.



TOOLS:

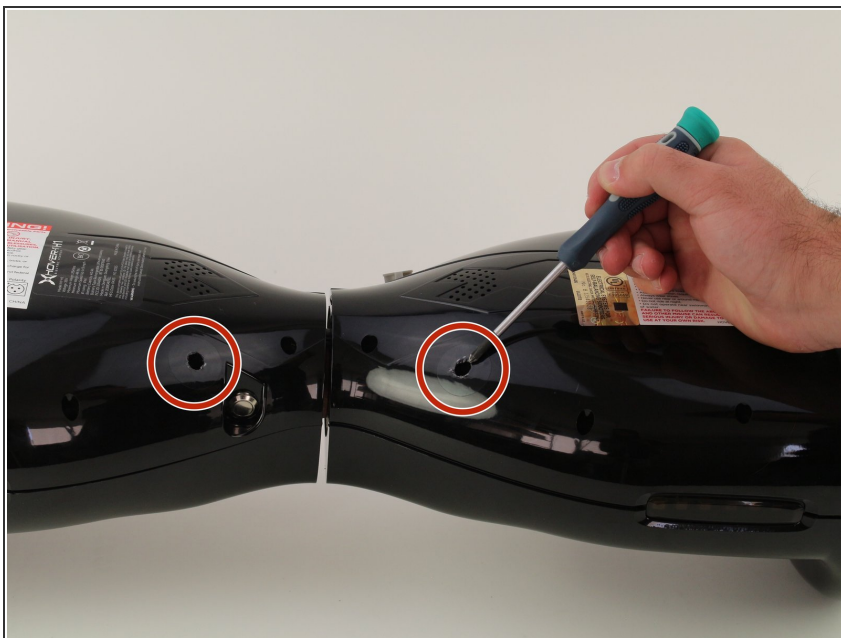
- [Phillips #2 Screwdriver](#) (1)
 - [Utility Knife](#) (1)
 - [Adjustable Wrench](#) (1)
-

Step 1 — Bottom Shell



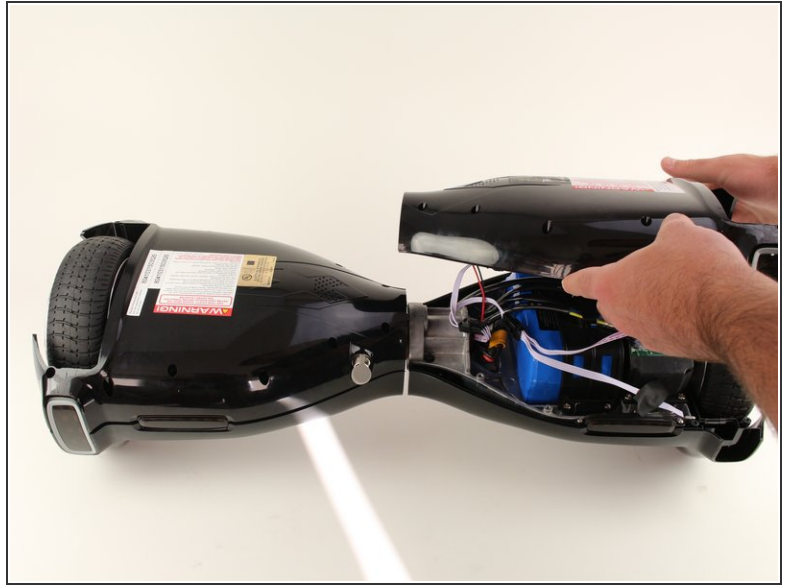
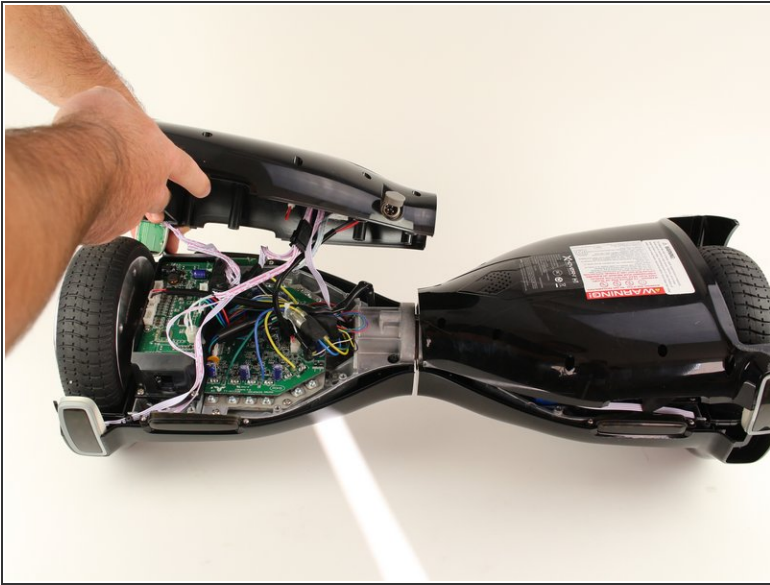
- Remove the ten 9mm machine screws by using a long Phillips #2 screwdriver to rotate the screws counterclockwise.
- Remove the twelve 9mm sheet metal screws by using a long Phillips #2 screwdriver to rotate the screws counterclockwise.

Step 2



- Puncture the two black stickers by using the tip of a screwdriver.
- Remove the two 9mm machine screws by using a long Phillips #2 screwdriver to rotate the screws counterclockwise.

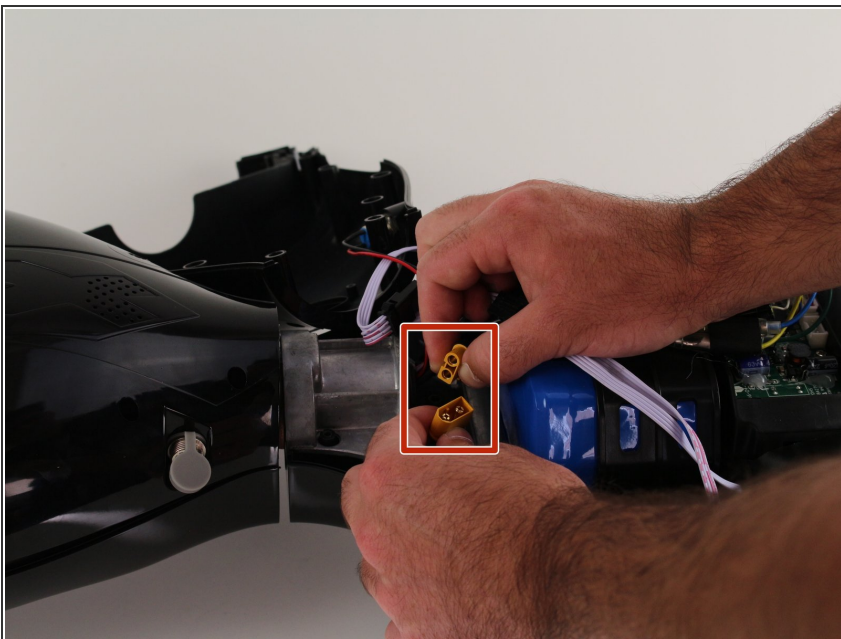
Step 3



- Lift each side of the bottom shell by pulling up.

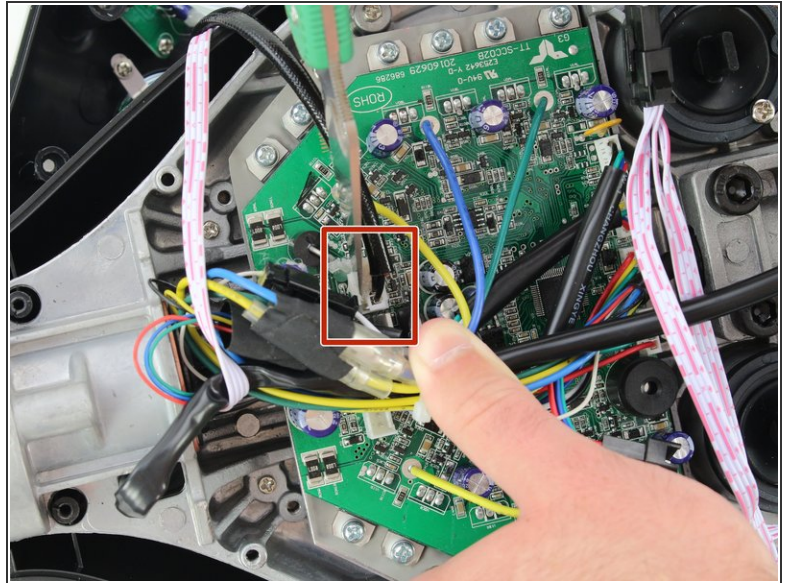
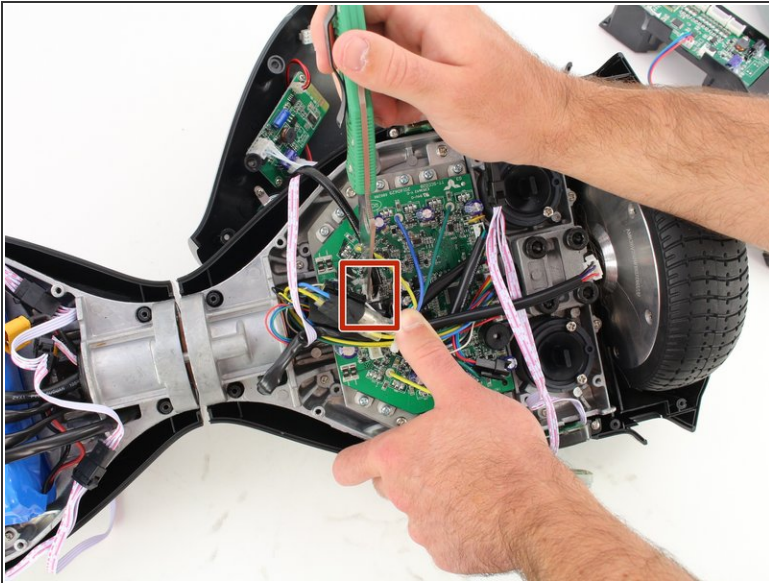
⚠ When lifting the shell, take care to not tear any cables from their connectors.

Step 4



- Unplug the battery by pulling gently on both sides of the orange connector.

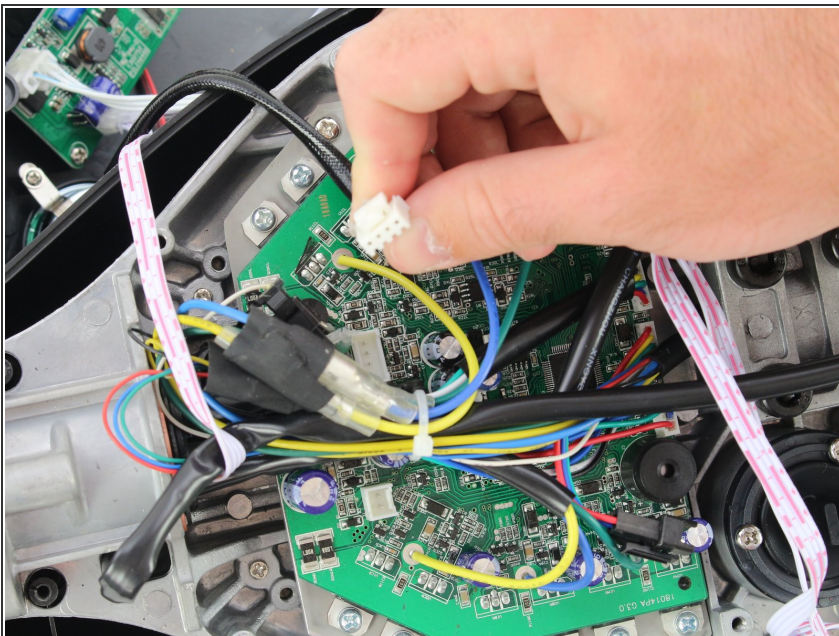
Step 5 — Charging Port



- Using a utility knife, scratch off the hot glue from the connector attaching the red and black wires to the motherboard.

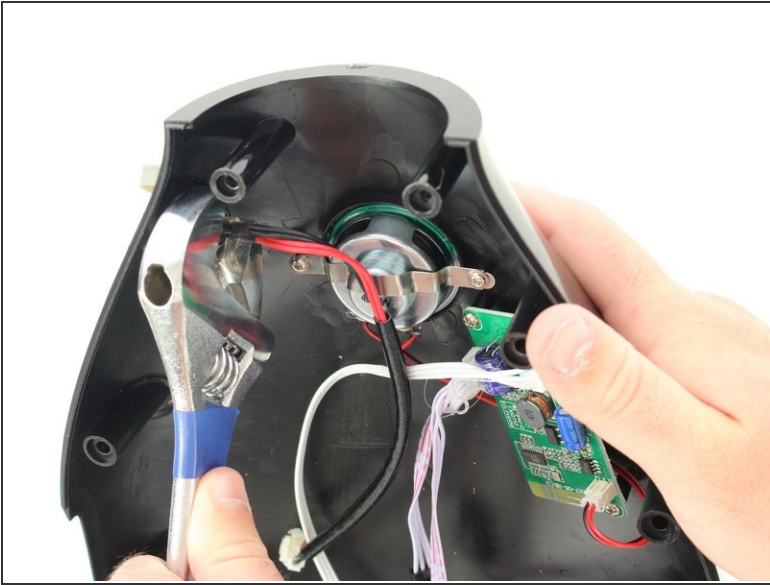
⚠ Be careful to not damage the wires or connector when removing the glue.

Step 6



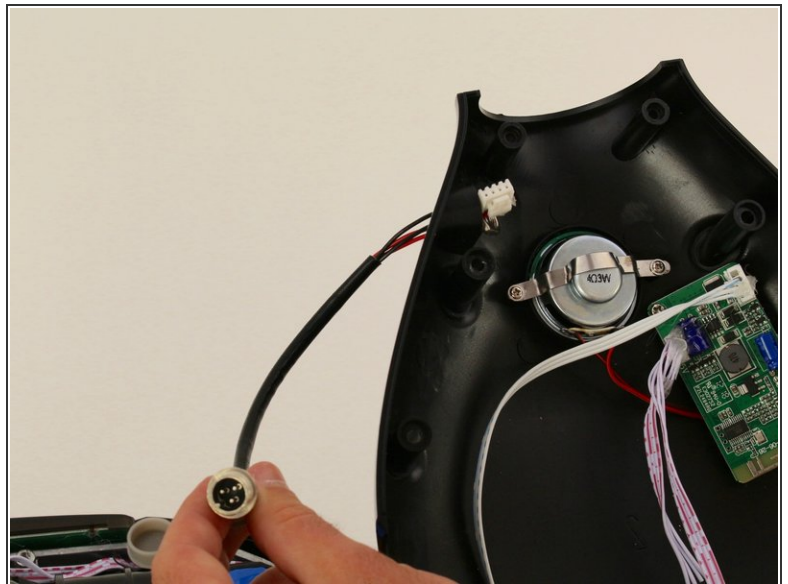
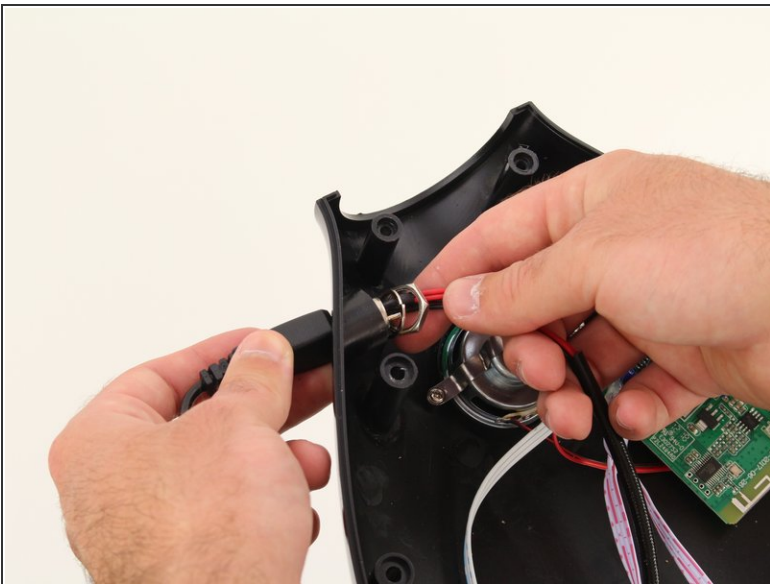
- Remove the charging port connector from the motherboard by squeezing the connector and pulling the connector up.

Step 7



- Using an adjustable wrench, unscrew the nut that is attaching the charging port to the bottom shell.
- ⓘ It might be helpful to put the charger in the charging port while unscrewing the nut to ensure that the port is not spinning.

Step 8



- Pull the charging port to the left through the shell.

To reassemble your device, follow these instructions in reverse order.