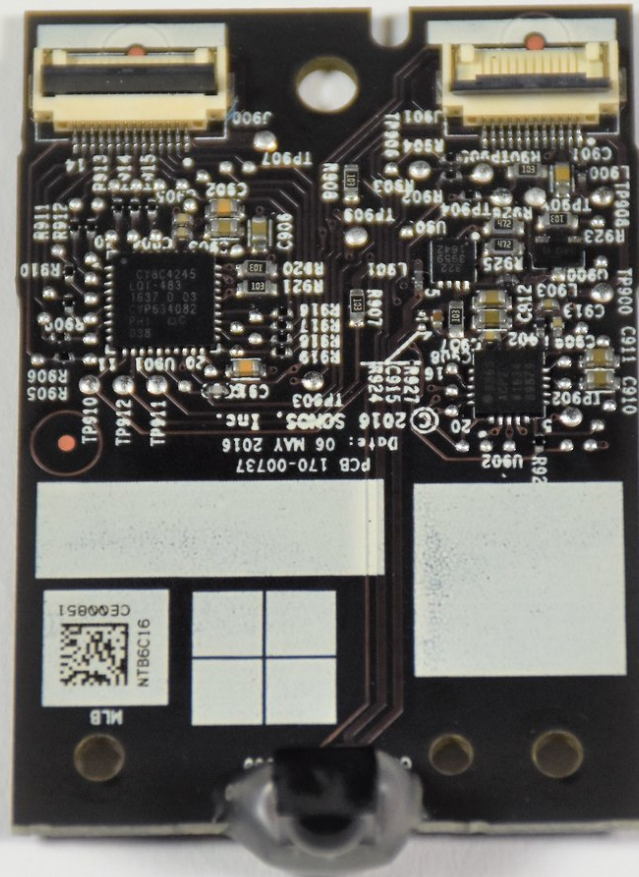




Sonos Playbase IR Reciver Replacement

How to replace the IR receiver of the Sonos Playbase.

Written By: George Slivka



INTRODUCTION

This guide shows how to replace the IR receiver of a Sonos Playbase, which receives signals from the television or other IR remote.

TOOLS:

- [iOpener](#) (1)
 - [T10 Torx Screwdriver](#) (1)
 - [T20 Torx Screwdriver](#) (1)
 - [iFixit Opening Tools](#) (1)
 - [Metal Spudger Set](#) (1)
 - [T5 Torx Screwdriver](#) (1)
-

Step 1 — Bottom Panel



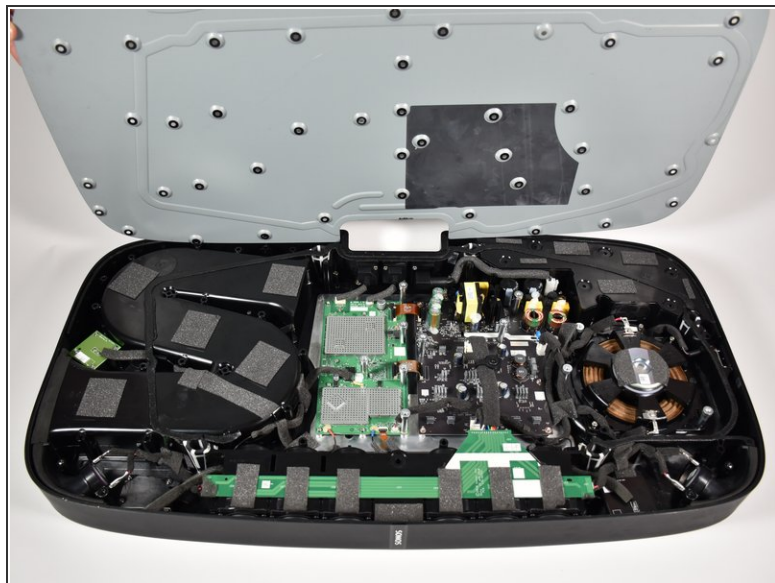
- Turn the Playbase upside down so that the "Sonos Playbase" imprint is face up.
- Remove the bottom panel with an [Opening Tool](#) by inserting underneath and prying upwards.
- ⓘ Melt the adhesive with an [iOpener](#) for ease of opening
- ⓘ Use a [Metal Spudger](#) if the plastic spudgers do not work.
- ⚠ Take care to avoid damaging the plastic or the device if using a metal spudger.

Step 2



- Remove the fourteen 11mm [T-10](#) screws by turning counter-clockwise.
 - Remove the seven 44mm [T-20](#) screws by turning counter-clockwise.
 - Remove the twenty-two 34mm [T-20](#) screws by turning counter-clockwise.
- ☐ Record where each screw belongs for easier reassembly.

Step 3

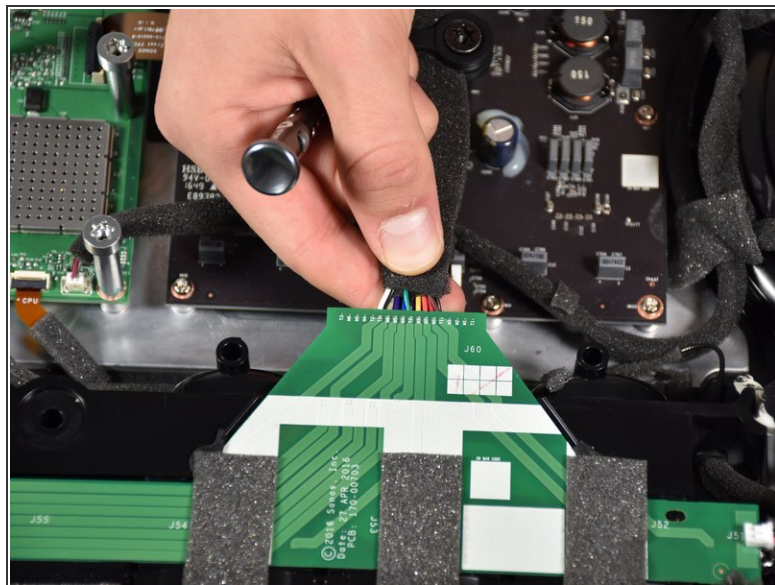
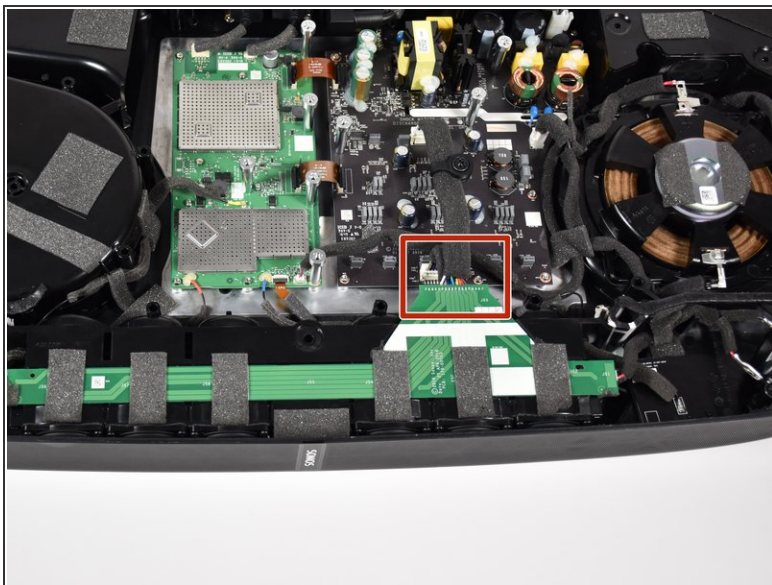


- Remove the metal plate with a [Opening Tool](#) by inserting underneath and prying upwards.

 Use a [metal spudger](#) if plastic openers do not work.

 Take care to avoid damaging the plastic or the device if using a metal spudger.

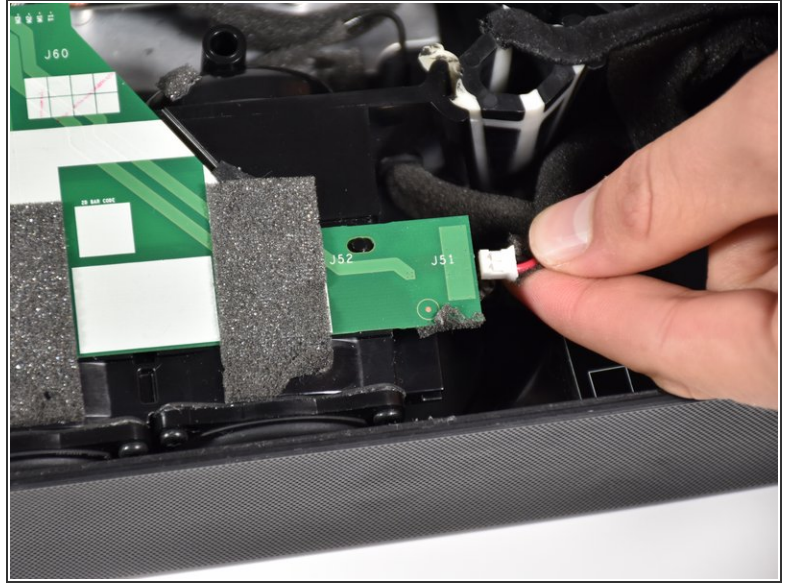
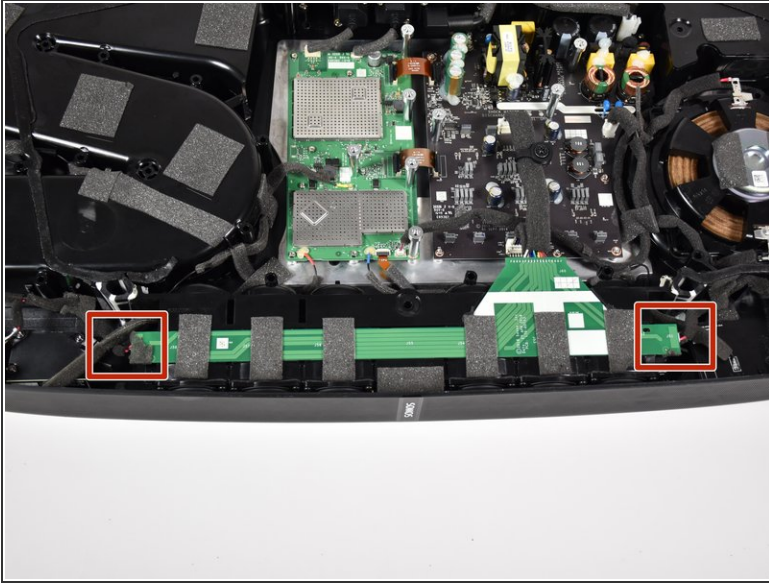
Step 4 — Main Speaker Array



- Disconnect the main speaker array from the main board, by pinching and pulling the tab out.

ⓘ See [Recognizing & Disconnecting Cable Connectors](#) for more information.

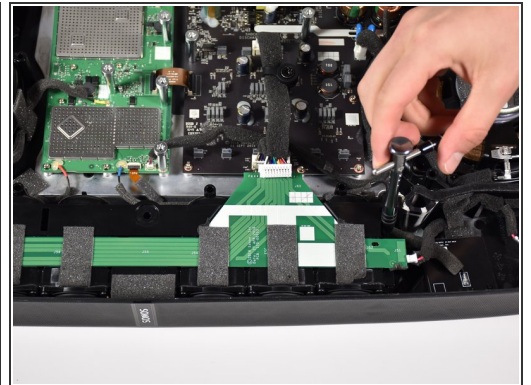
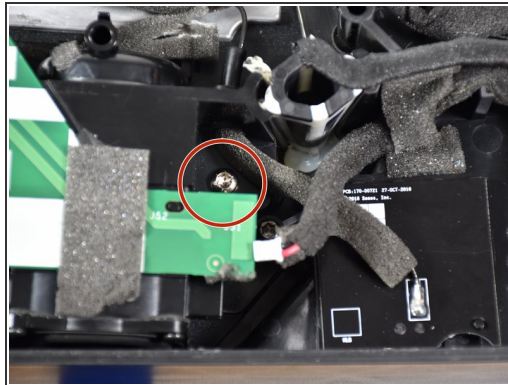
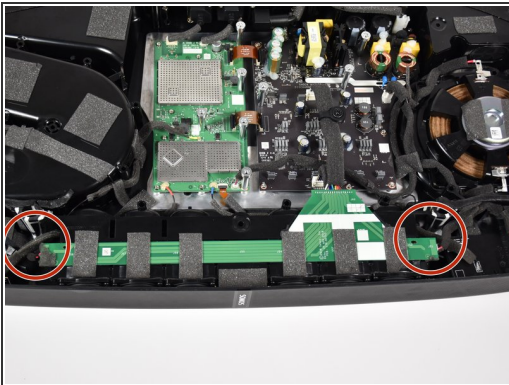
Step 5



- Remove the side speakers from the green printed circuit board (PCB) running along the top of the main speaker array by pinching and pulling out the connector.

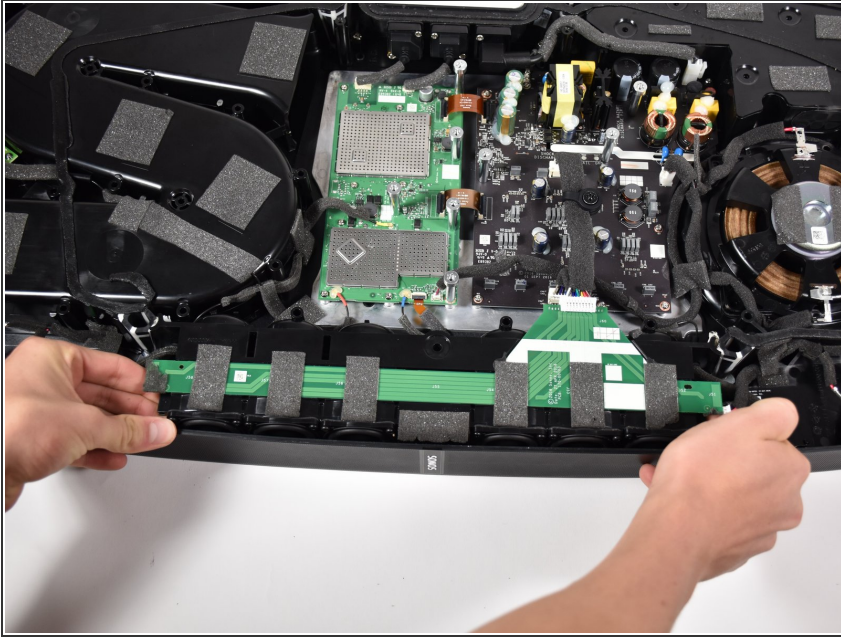
 See [Recognizing & Disconnecting Cable Connectors](#) for more information.

Step 6



- Remove the two 16mm [T-20](#) screws located on both sides of the main speaker array by turning counter-clockwise.

Step 7



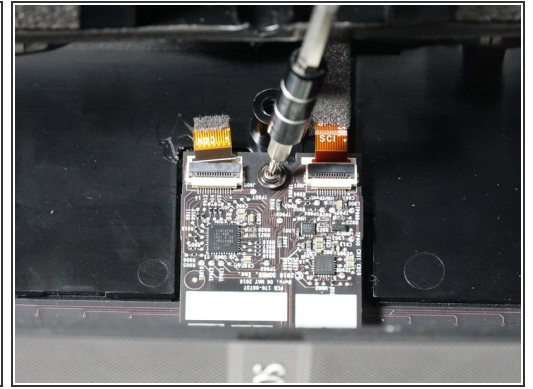
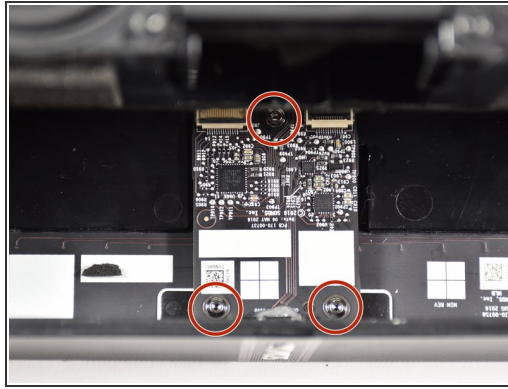
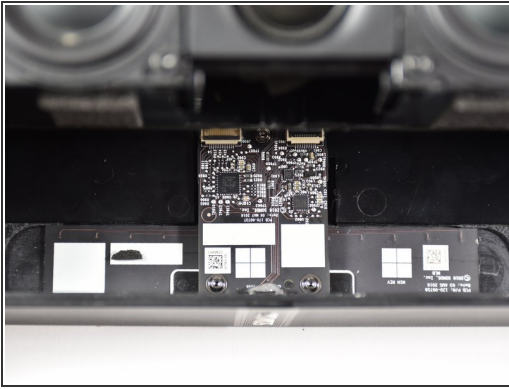
- Remove the main speaker array by gripping it on both sides and pulling it out.
- ⓘ The array may require a significant amount of force to remove.
- ⓘ Use prying tools as necessary to remove the main speaker array if you are unsuccessful using your hands.
- ⚠ Do not yank the array out too suddenly or too far as this may damage the device.

Step 8



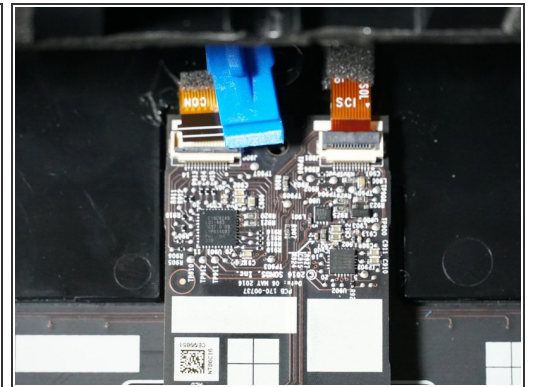
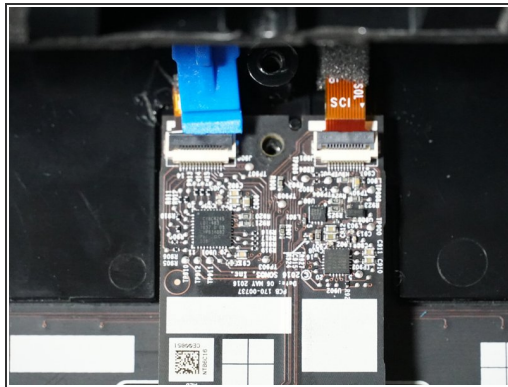
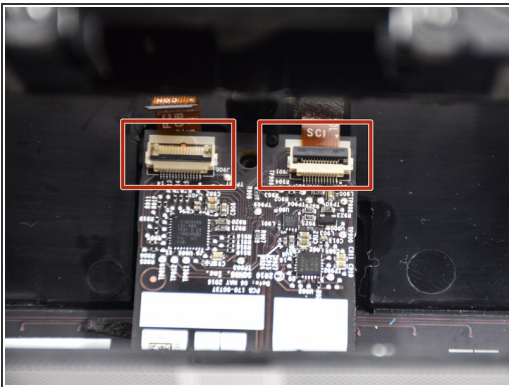
- Prop the removed main speaker array up on top of the main circuit board.

Step 9 — IR Receiver



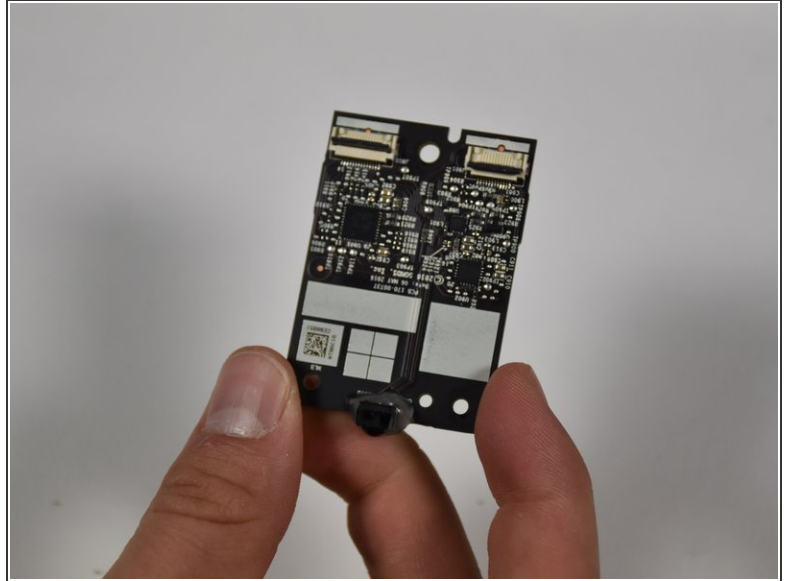
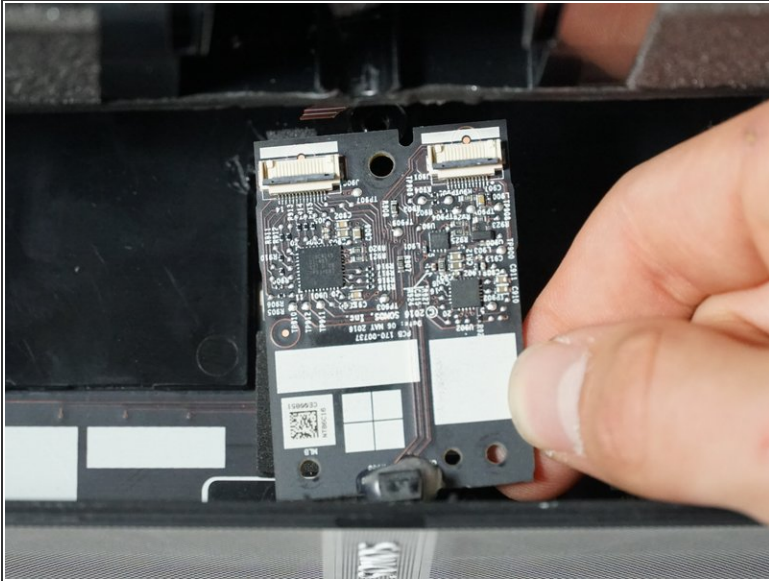
- Lift the main speaker array to reveal the IR receiver underneath.
- Remove the three 11 mm [T-5](#) screws by turning counter-clockwise.

Step 10



- Remove ZIF connectors by lifting the black tabs and pulling the ribbon out.
- ① See the [Recognizing & Disconnecting Cable Connectors](#) guide.

Step 11



- Remove the IR receiver by grasping it with two fingers and pulling up.

To reassemble your device, follow these instructions in reverse order.