



Sony Vaio SVE15112FXS Keyboard Replacement

Use this replacement guide to replace a damaged keyboard on the Sony Vaio SVE15112FXS.

Written By: Ashley Bierman



INTRODUCTION

If your keyboard is damaged or not working properly, you can use this guide to replace it. This process is simple and only requires a #0 Phillips screwdriver, a plastic opening tool, and magnetic project mat to keep track of the screws for each step. Be sure to handle the keyboard with care as it is a delicate part.



TOOLS:

- [Phillips #0 Screwdriver](#) (1)
 - [iFixit Opening Tools](#) (1)
 - [Magnetic Project Mat](#) (1)
-

Step 1 — Keyboard



- ⚠ Power laptop off before beginning.
- Turn the laptop over so that it is positioned top down with the model number facing you.

Step 2



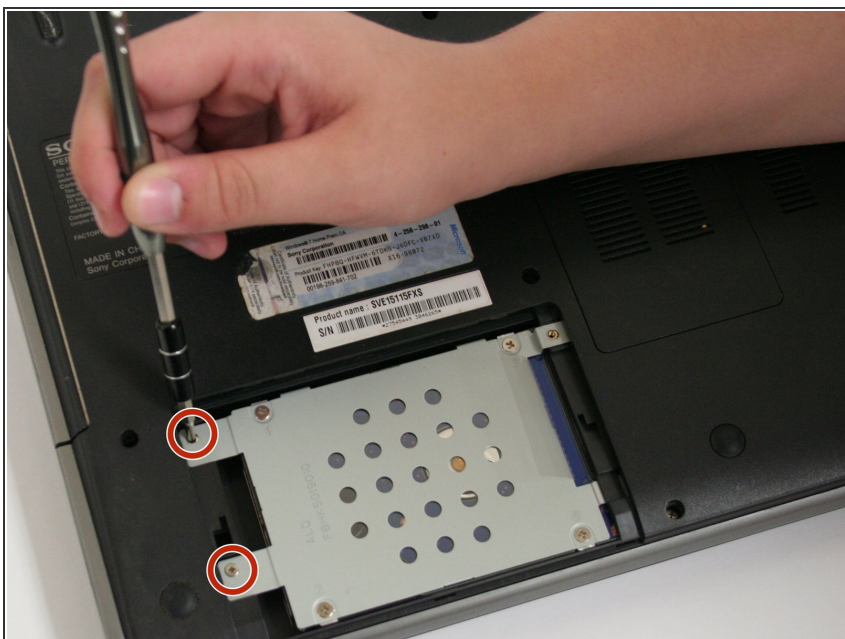
- Use a #0 Phillips screwdriver to remove the two 4.0 mm screws securing the hard drive cover.
- ⓘ To avoid losing any parts, we recommend that you place the loose screws on a magnetic project mat.

Step 3



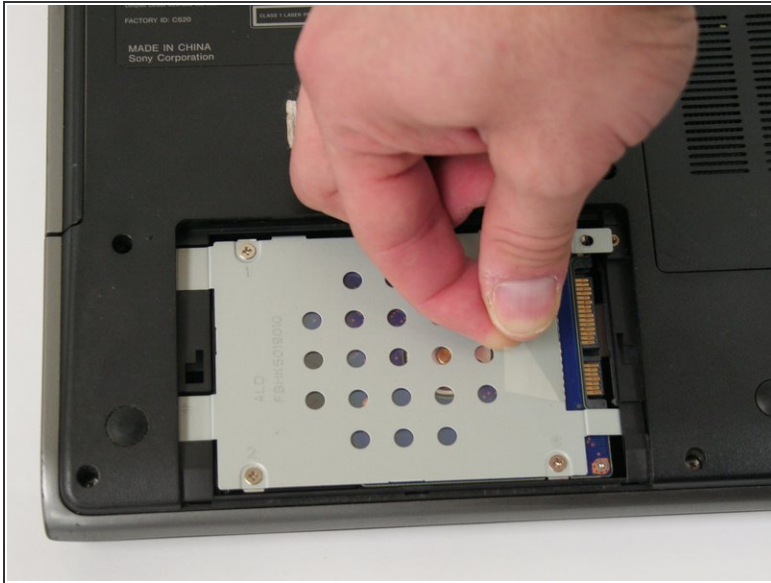
- To expose the hard drive, remove the cover by sliding it toward you and pulling up on the panel.

Step 4



- Use a #0 Phillips screwdriver to remove the two 4.0 mm screws attaching the hard drive to the laptop.

Step 5



- Pull the clear plastic ribbon to the left until the mount is detached from the laptop.
 - ❗ There will be some resistance as the hard drive is disconnected. If it does not move at all, check that all anchor screws are removed.
- Lift the hard drive out of the well.

Step 6



- Use a Phillips #0 screwdriver to remove the one 4.0 mm screw next to the model number label.

Step 7



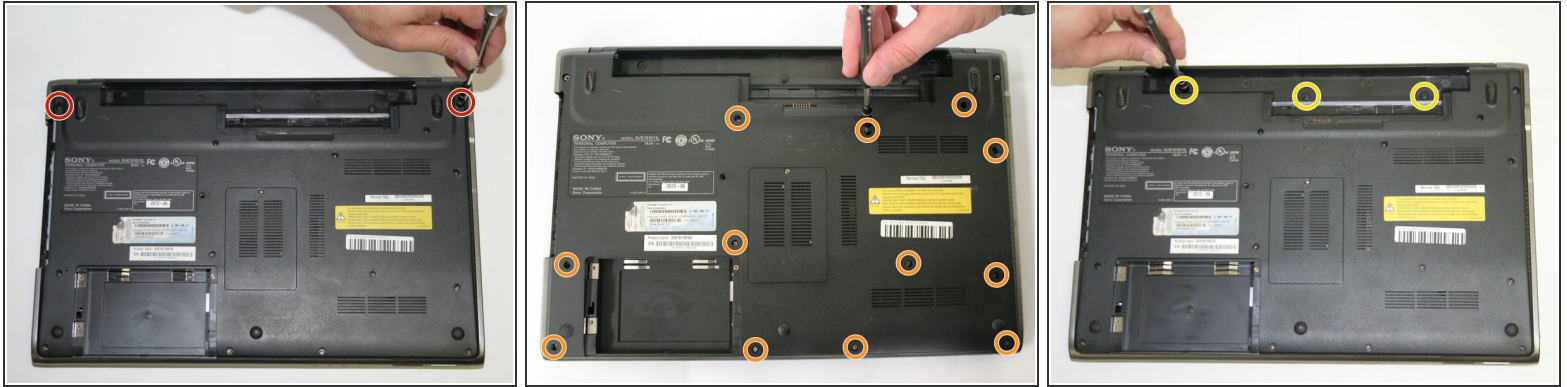
- Use a plastic opening tool to slide the CD-ROM out from the laptop.

Step 8



- Slide the "lock" tab upward to unlock the battery before removal.
- While pushing the "release" tab upward, lift the battery and pull outward to remove it from the laptop.

Step 9



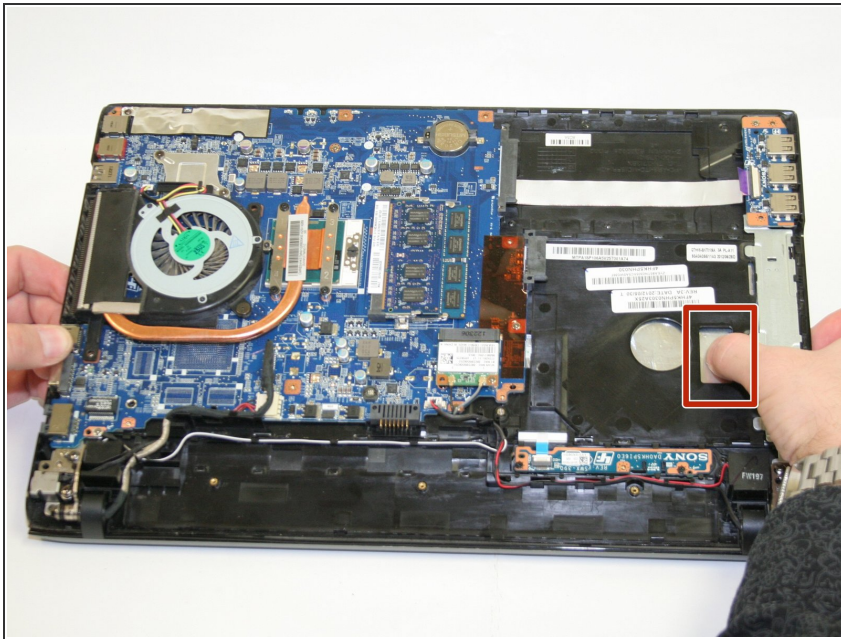
- To unsecure the back cover, remove all the case screws using a #0 Phillips screwdriver.
- Remove the two 9.0 mm screws on each side of the battery.
- Remove the twelve 8.0 mm long screws alongside the entire back cover.
- Remove the three 3.0 mm screws inside the battery well.

Step 10



- Use a plastic opening tool to carefully pry open the latch points located under the silver plastic trim. Repeat this around the back cover.
- ⓘ It may be easiest to start around the CD-ROM bay because there is more room.
- ⚠ To avoid damaging the plastic trim and cover, do not force difficult areas and make sure the opening tool is completely under the black plastic cover, not just the silver trim.
- Lift the back cover upward and away from the laptop.

Step 11



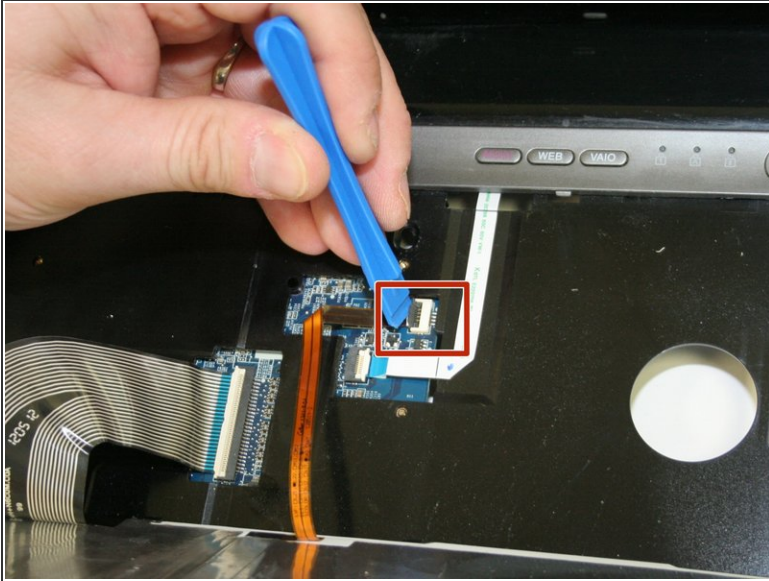
- Gently push the rectangular opening on the CD-ROM well to loosen the keyboard.

Step 12



- Use a plastic opening tool to pry upward on the keyboard. Only the top of the keyboard is latched.
- Lift the keyboard toward you and away from the laptop.

Step 13



- Use a plastic opening tool to disconnect the two ZIF connectors attached to each ribbon. Both are located under the keyboard and have a clear flap that must be lifted upward before removal.
 - Open the white connector attached to the copper ribbon.
 - Open the white connector attached to the black and white striped ribbon.
- ⚠ Take care when opening these connectors. The ribbon is anchored underneath the clear flap. Pulling these pieces out of their sockets will make it difficult to reassemble them.
- Lift the keyboard away from the body of the laptop.

To reassemble your device, follow these instructions in reverse order.