



Samsung Galaxy Tab E 8.0 Back Camera Replacement

The rear camera of the Samsung Galaxy Tab E 8.0...

Written By: Christian Bloemhof



INTRODUCTION

The rear camera of the Samsung Galaxy Tab E 8.0 can be damaged if the camera is struck by a hard object. This guide shows how to replace the tablet's rear camera, which is attached to the motherboard.

TOOLS:

[iFixit Opening Tool](#) (1)

[Tweezers](#) (1)

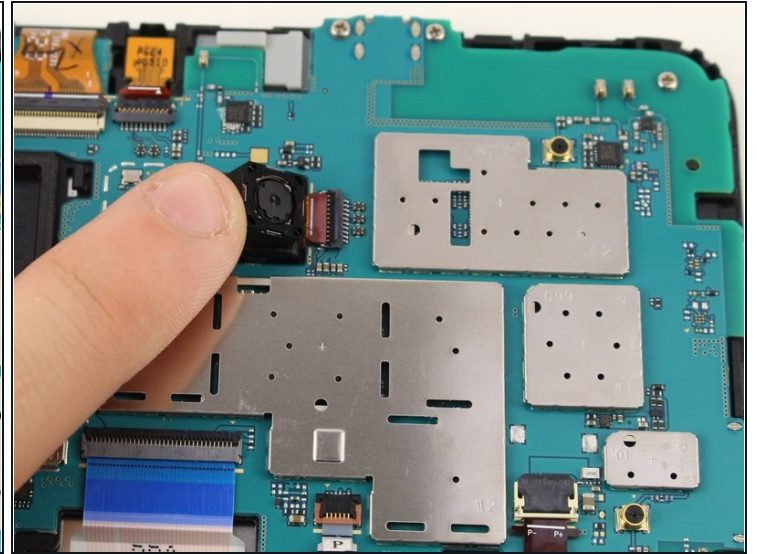
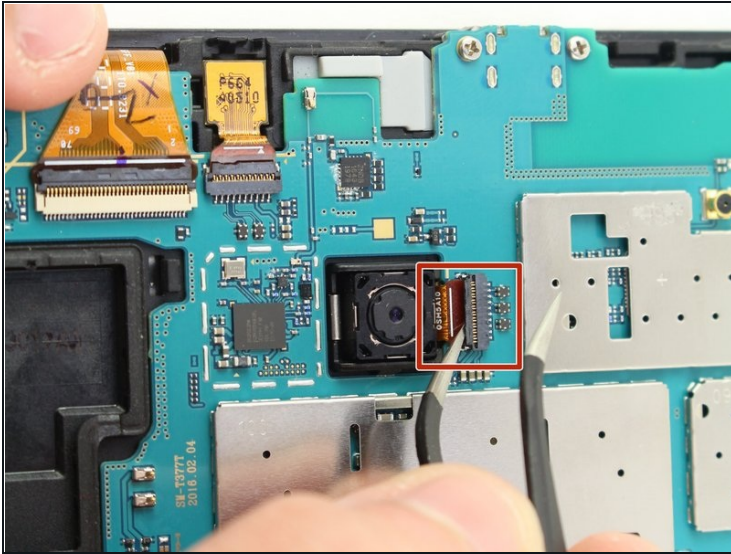
Step 1 — Back Panel



- Use the iFixit Opening Tool to pry off the back case, moving the tool around the screen.

 Make sure the device is off and the SD card is removed before taking off the back casing.

Step 2 — Back Camera



- Use the [tweezers](#) to lift the switch connecting the back camera to the motherboard.
- Use your hand to remove the back camera from the motherboard.

To reassemble your device, follow these instructions in reverse order.