



Lenovo IdeaPad 110-15ISK Motherboard Replacement

If the Lenovo has a blue screen appear,...

Written By: Jakub Szark



INTRODUCTION

If the Lenovo has a blue screen appear, overheats, or locks up or freezes, then there may be a faulty motherboard. To replace the motherboard, follow the guide provided to replace it.

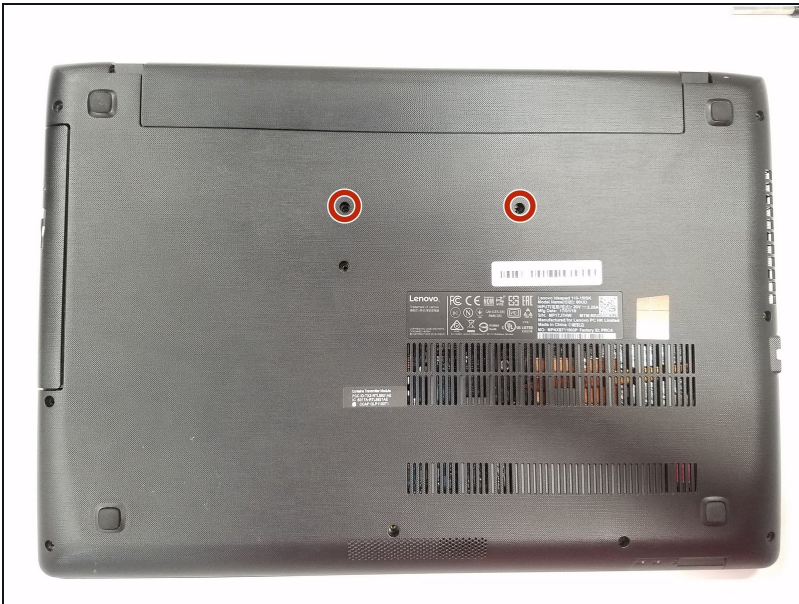
TOOLS:

[iFixit Opening Tool](#) (1)
[Phillips #1 Screwdriver](#) (1)
[Spudger](#) (1)
[Tweezers](#) (1)

PARTS:

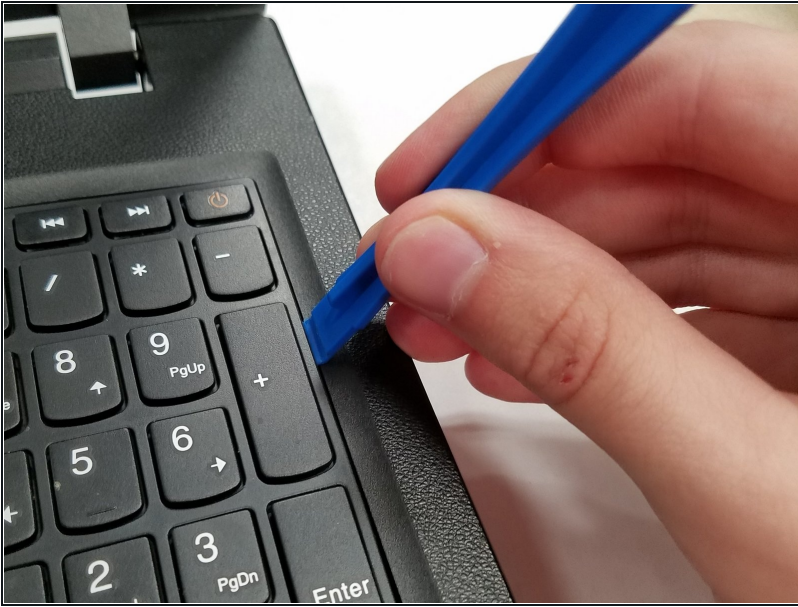
[Lenovo IdeaPad 110-15 Screw Set](#) (1)

Step 1 — Keyboard



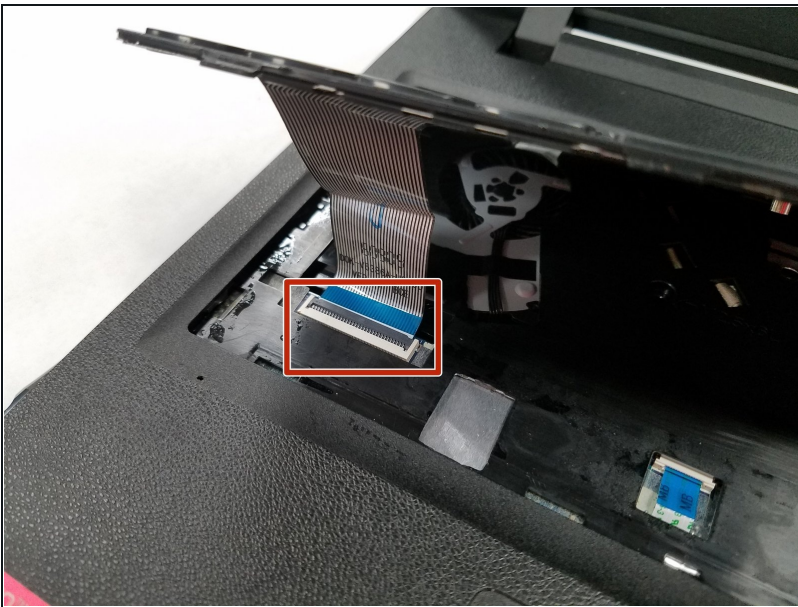
- Flip the IdeaPad bottom side up.
- Using a Phillips #1 screwdriver, remove the two 6.0mm screws on the back panel, that hold the keyboard.
- Flip the computer back to top facing.

Step 2



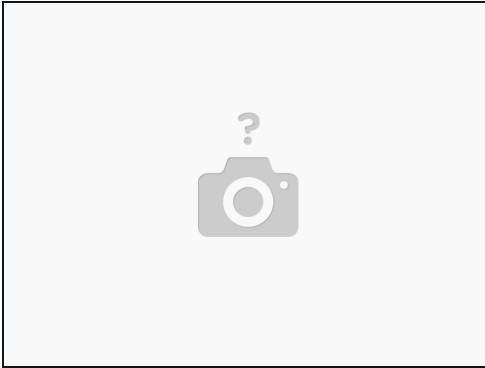
- Open the lid.
- Use the plastic opening tool to pry the keyboard up and away from the bottom assembly.

Step 3



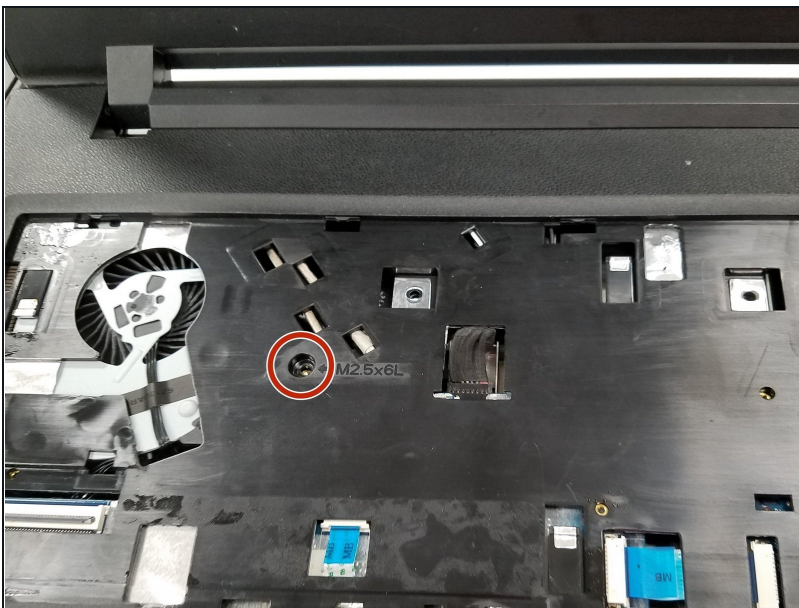
- Next disconnect the keyboard cable by using the tip of the spudger or your finger to lightly push out the ribbon from the contact port.
- Completely remove the keyboard from the bottom assembly.

Step 4



- Unlock the ZIF connector before pulling the cable out

Step 5 — Optical Drive



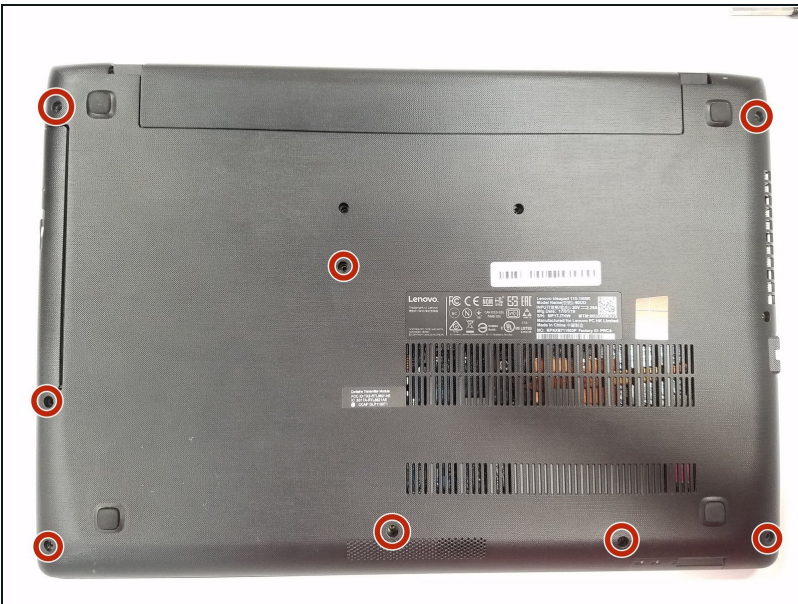
- Using a Phillips #1 screwdriver, unscrew the one 5.0mm screw on the back panel.

Step 6



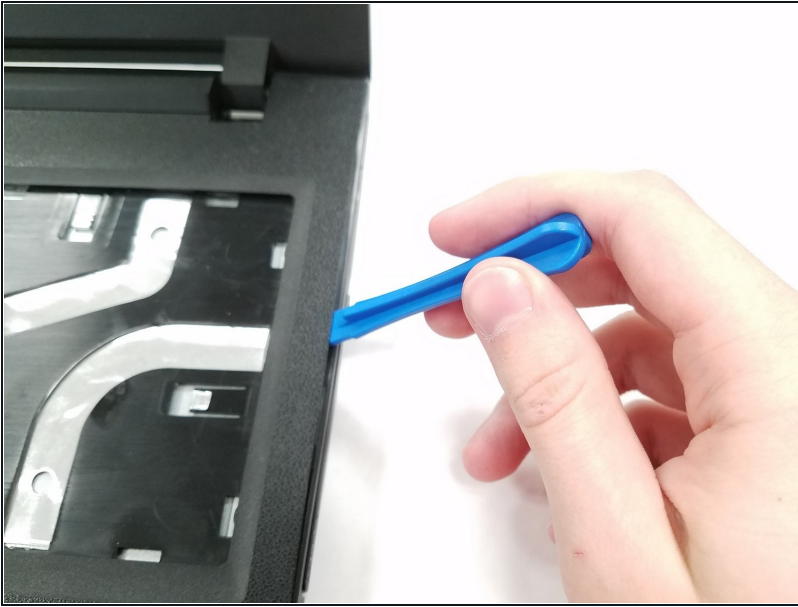
- Flip the laptop to its back and the optical drive is located at the top left corner.
- Remove the optical CD DVD drive by lightly pulling it out of the assembly.

Step 7 — Upper Case



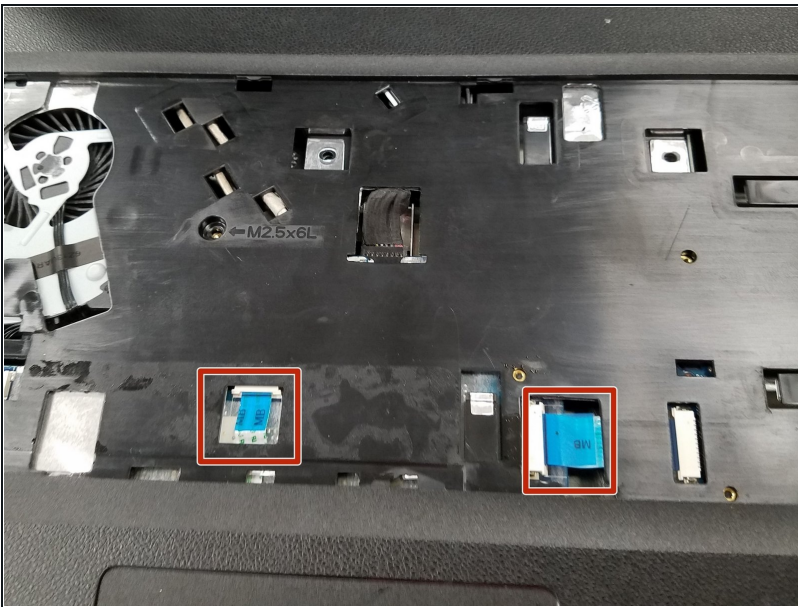
- Place the laptop bottom facing up.
- Using a Phillips #1 screwdriver, remove the remaining eight 6.0mm screws on the back panel.
- Flip the computer back to top facing.

Step 8



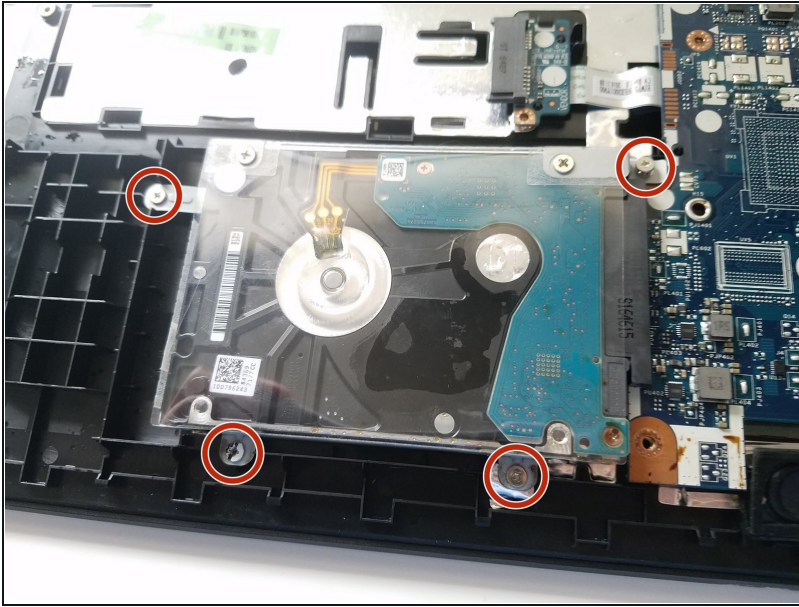
- Separate the top case from the bottom using a plastic opening tool.
- Continue prying the top and bottom case from each other all around the perimeter of the laptop.

Step 9 — Motherboard



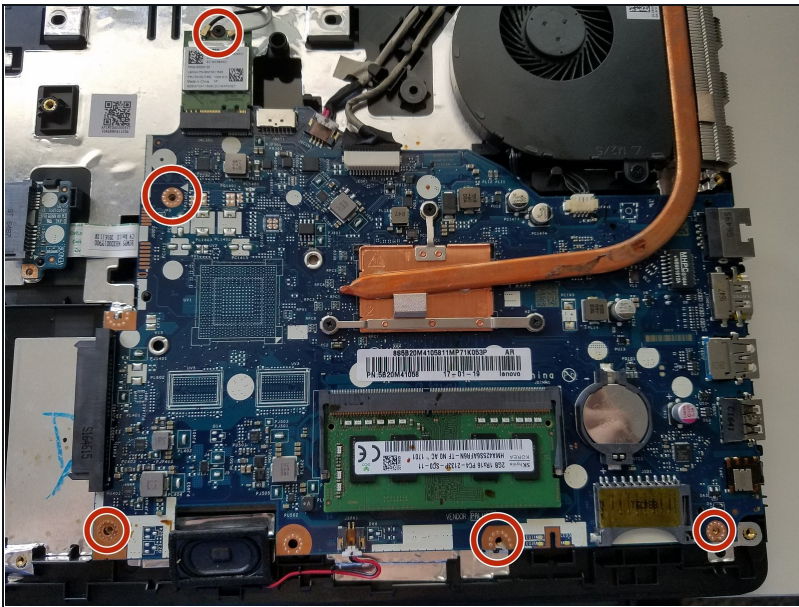
- Pull the two connectors with blue ribbons marked with MB in the opposite direction of the connector

Step 10



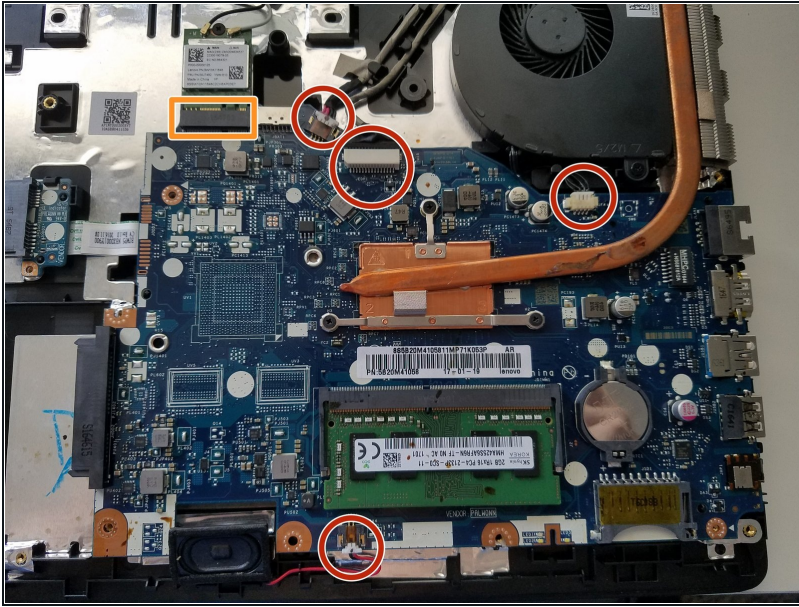
- Using a Phillips #1 screwdriver, remove the marked four 4.0mm screws.
- Pull out the hard drive.

Step 11



- Using a Phillips #1 screwdriver, remove the five 4.0mm screws.

Step 12



- Using [tweezers](#), pull the four marked connectors out and away from the motherboard.
- Remove the WIFI card by pulling up and away from the motherboard.

Step 13



- Pull off the motherboard.

To reassemble your device, follow these instructions in reverse order.