



ZTE Blade Z Max Screen/Digitizer Replacement

Replace a broken display or unresponsive ZTE Blade Z Max touchscreen.

Written By: Ronald Weimar



INTRODUCTION

The LED screen and touchscreen (digitizer) are one unit and make up the frame of the phone. You will essentially be removing all of the internal components of the phone and placing them in a new housing.



TOOLS:

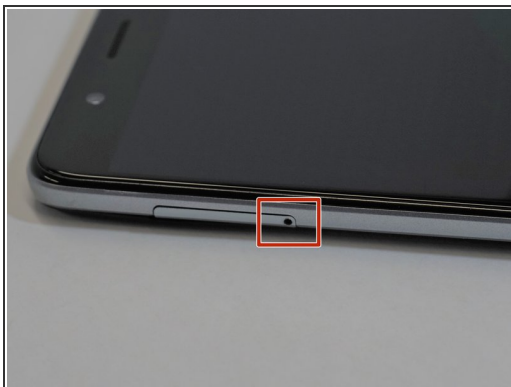
- [JIS #000 Screwdriver](#) (1)
- [SIM Card Eject Tool](#) (1)
- [iFixit Opening Picks set of 6](#) (1)
- [T2 Torx Screwdriver](#) (1)
- [Spudger](#) (1)
- [Tweezers](#) (1)
- [iFixit Opening Tools](#) (1)



PARTS:

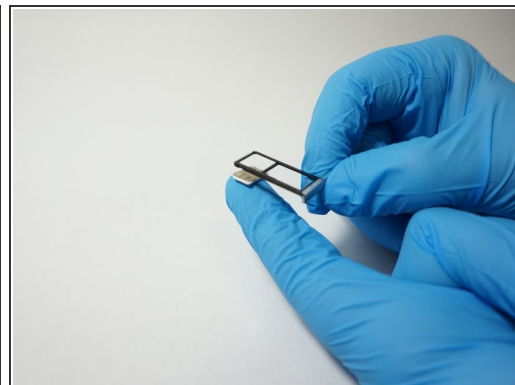
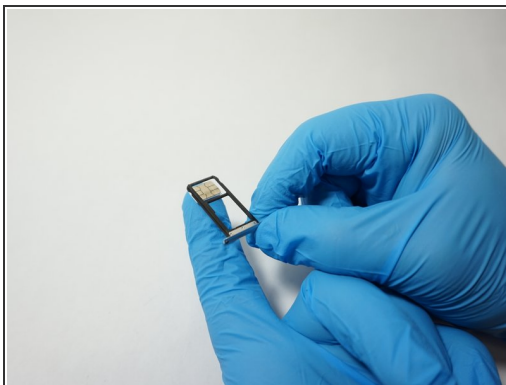
- [ZTE Blade Z Max Screen/Digitizer](#) (1)

Step 1 — SIM Card



- Turn the device on its side with the buttons away from you.
- Using the SIM Card Eject Tool, insert the narrow end into the ejection hole.
- Press firmly into the hole until the SIM card tray pops out far enough to grab with your fingers.

Step 2



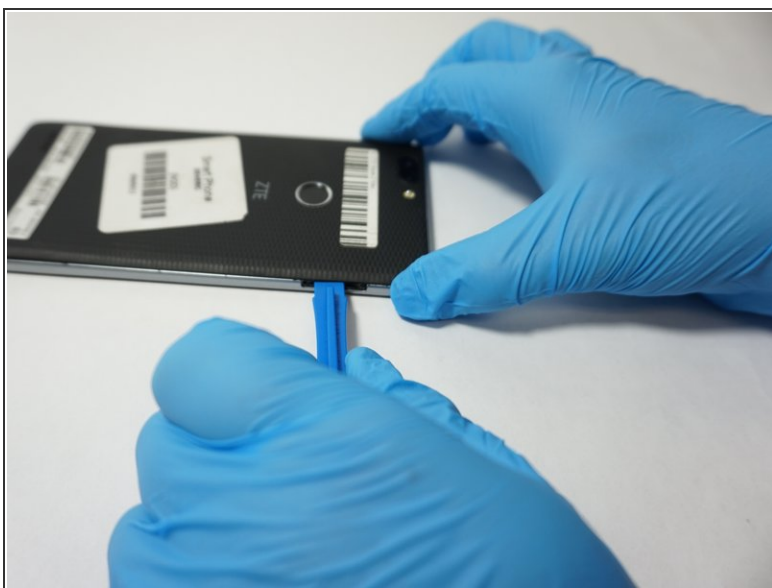
- Pull the tray out with your fingers .
- Remove the SIM card.

Step 3 — Fingerprint Sensor



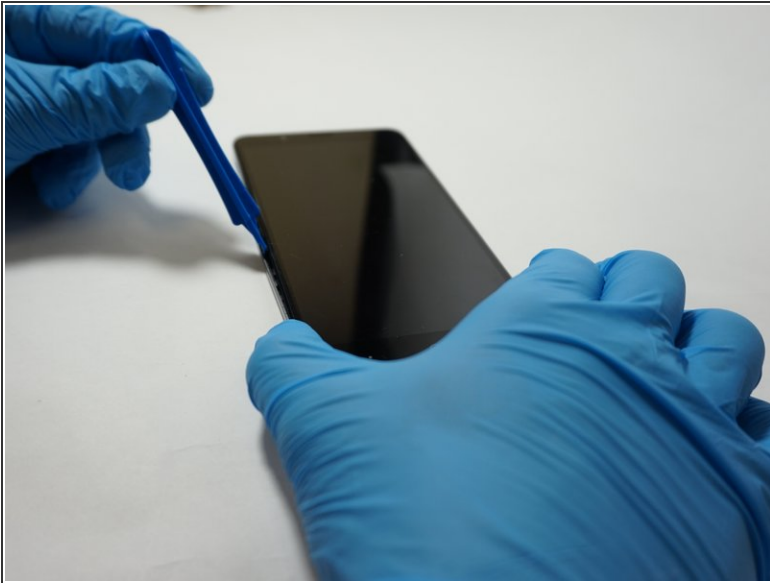
- Remove the one T2 screw from the side of the phone near where the SIM card tray was.

Step 4



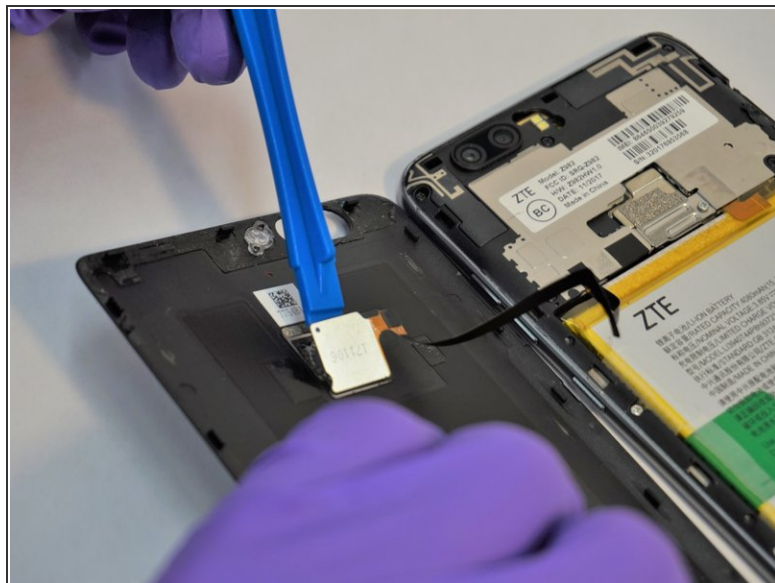
- Insert a plastic opening tool into the space where the SIM card tray used to be.
- Gently pry the back away from the phone frame until you hear and audible click of the back separating.

Step 5



- Insert the plastic opening tool into the space you created between the phone back and frame.
- Slide the plastic opening tool along the outside of the phone, underneath the back, to separate the rest of the clips holding the back onto the frame.

Step 6



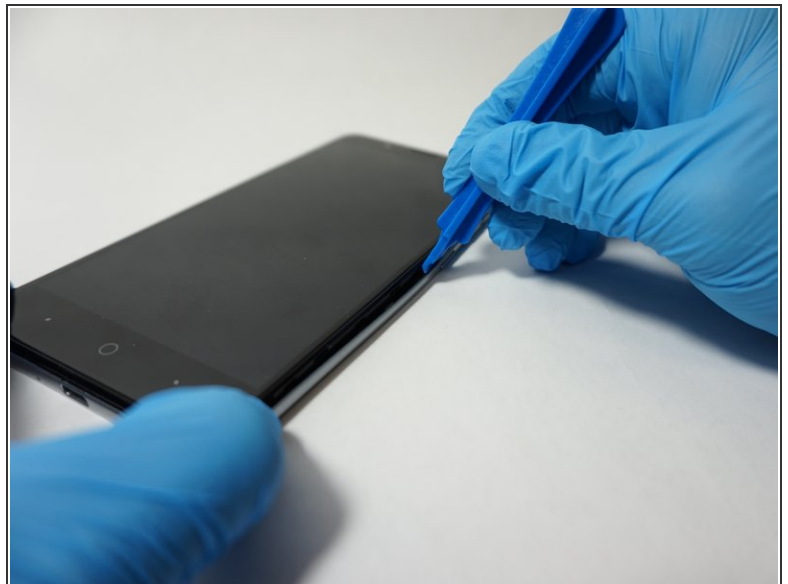
- Rotate the back over to the side, being careful not to damage the fingerprint sensor ribbon cable.
- Use a plastic opening tool to separate the fingerprint sensor from the back of the phone.
 - ☑ On reassembly, add a piece of simple scotch tape to hold the fingerprint sensor to the phone back.
- Set the phone back aside.

Step 7



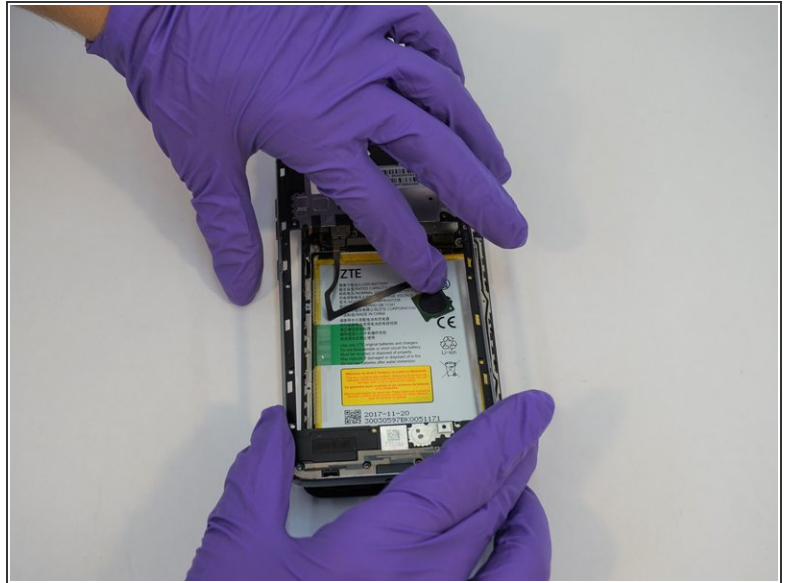
- Remove the 6 silver 2.9mm screws from the back of the phone with a JIS #000 bit.
- Remove the 11 black 3.5mm screws with the same JIS #000 bit.

Step 8



- Turn the phone over, with the screen up.
- Insert the opening tool between the screen and the silver trim that surrounds it.
- Run the plastic opening tool around the circumference of the phone to separate the clips of that hold the trim to the frame.

Step 9



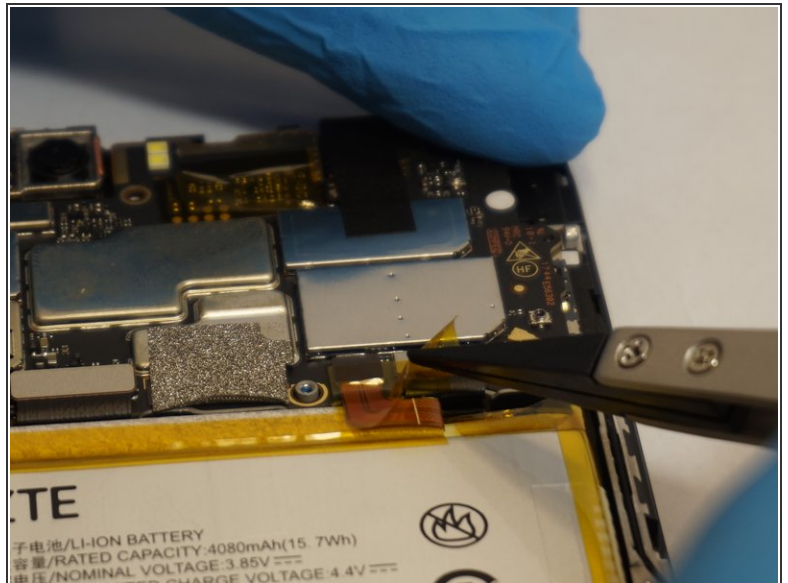
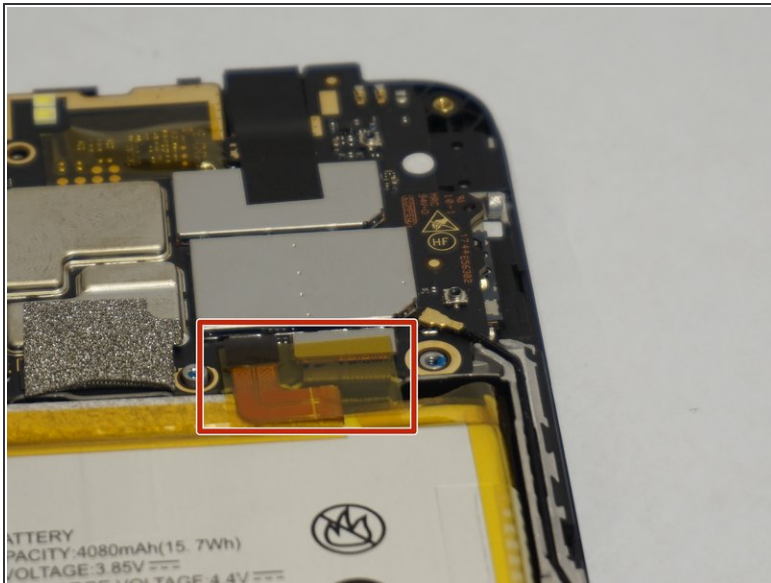
- Turn the phone back over, with the screen down.
- Lift the trim piece off of the phone and set aside.

Step 10



- Using a plastic opening tool, separate the fingerprint ribbon connector from the motherboard.


Step 11 — Battery



- Use a pair of tweezers to carefully pull up on the tape securing the connector.
- This will undo the connector as well.

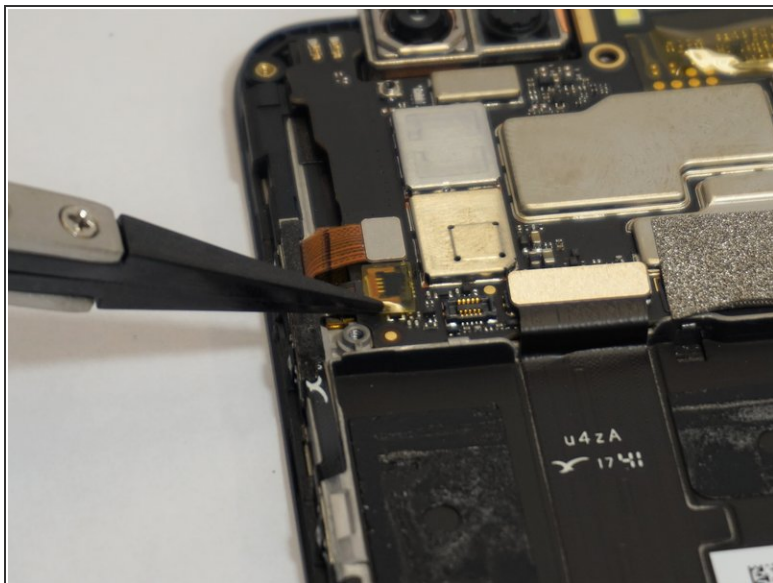
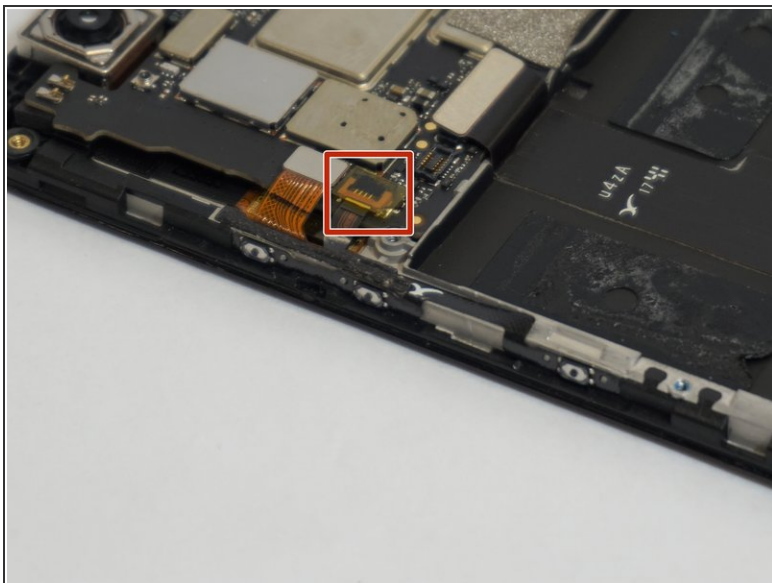
Step 12



 Be careful to not damage the battery during this step. If it appears you are using too much force to separate the battery from the frame, you may need to heat the phone to soften the adhesive holding the battery to the phone.

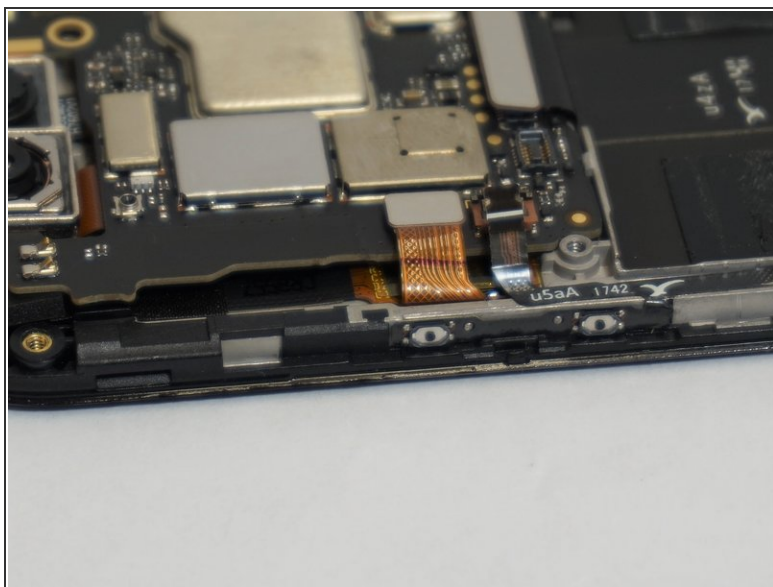
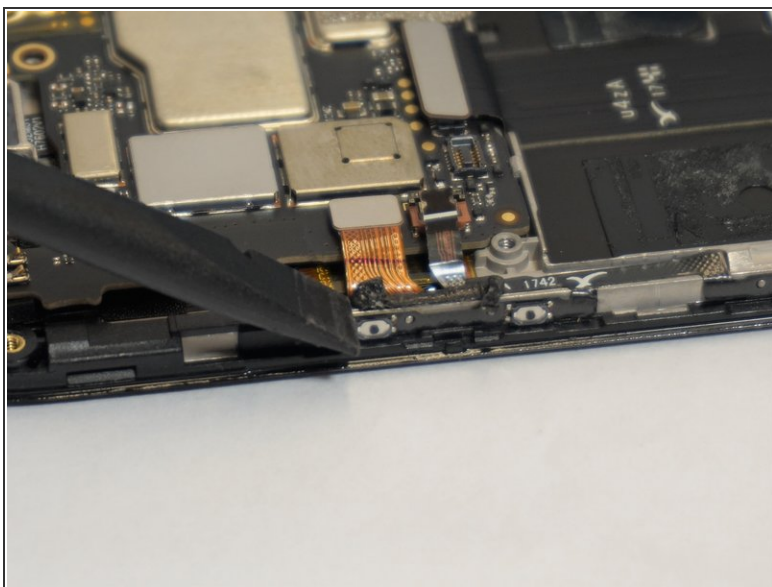
- Starting at the bottom left corner of the battery, use the wide end of the spudger as a wedge to get underneath the battery.
- Insert a plastic opening tool into the space created by the spudger and CAREFULLY begin to pry around the edge of the battery.
- Once the battery is separated for enough from the phone, use your hands to fully remove the battery, using the wide end of the spudger to scrape off adhesive where necessary.

Step 13 — Side Mounted Buttons



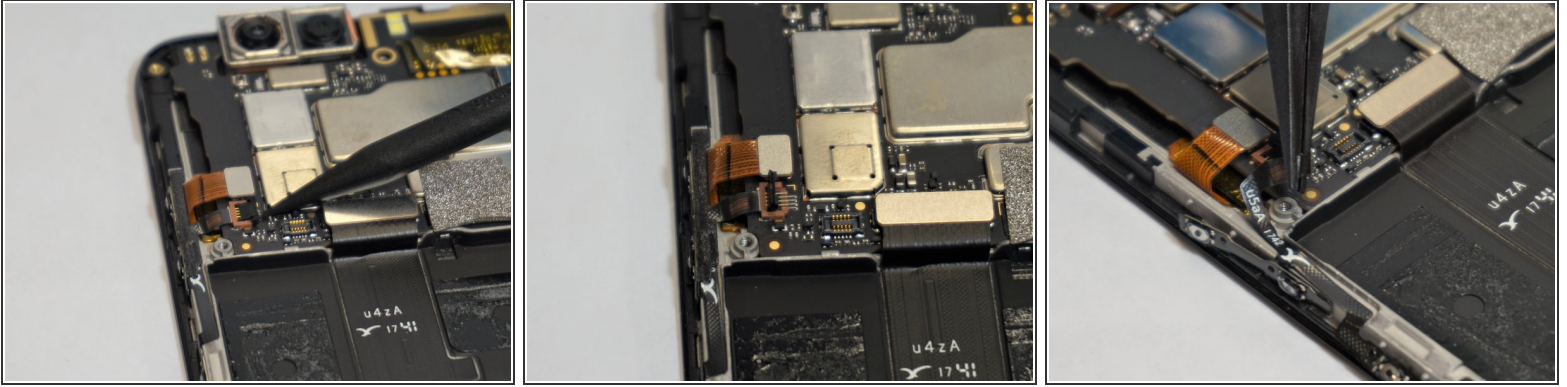
- Using a set of tweezers, pull off the small piece of tape on top of the ribbon cable connector on the left side of the motherboard.

Step 14



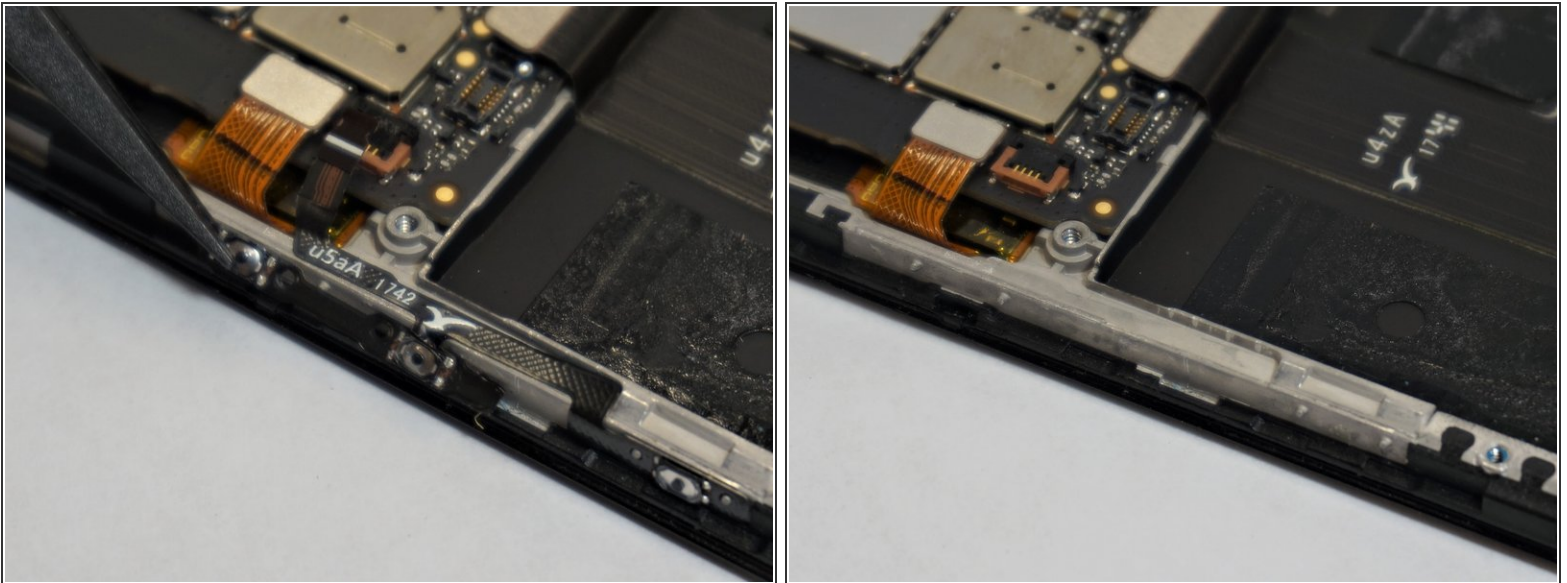
- Use a plastic opening tool or spudger to scrape the glue away from the ribbon cable.


Step 15



- Using a plastic opening tool or spudger, open the zip connection by prying up on the right (black) side of the connector.
- Using the tweezers, carefully pull the the ribbon cable out of the connector.

Step 16



 The button ribbon cable is very fragile, especially near the down volume button. If you intend on reinstalling this piece later, be careful not to rip it.

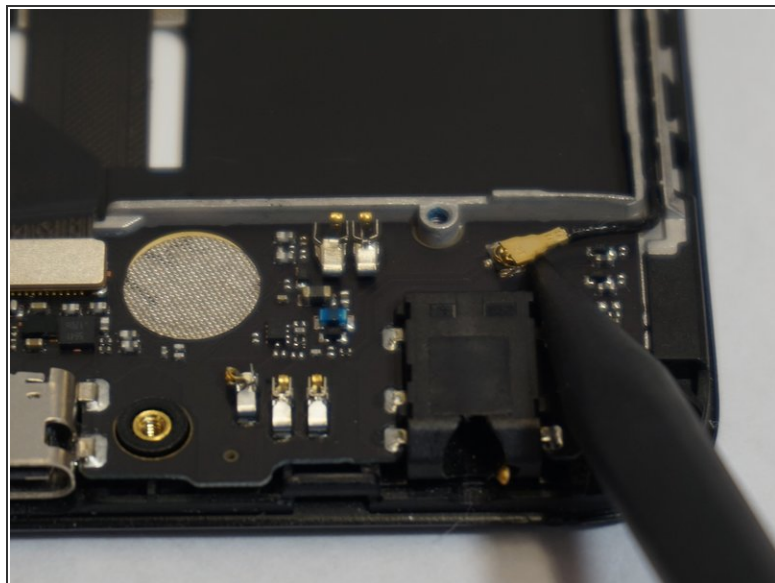
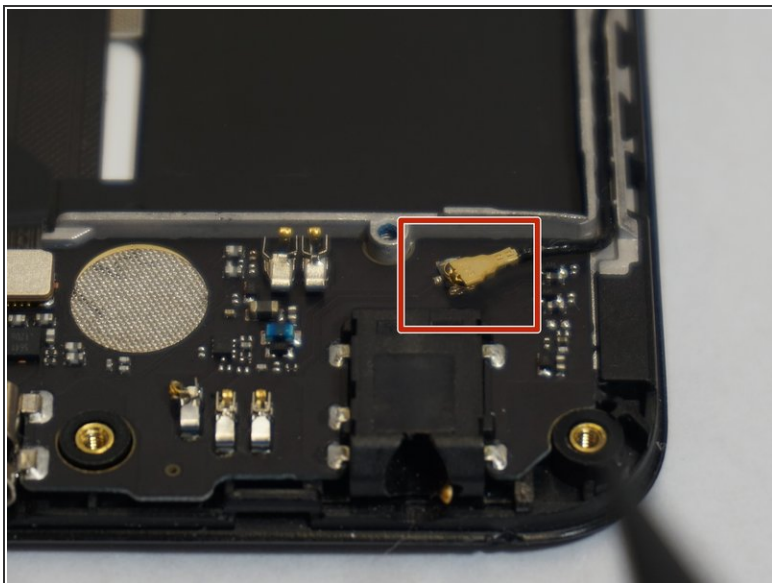
- Using a plastic opening tool or tweezers, pry the edge of the button strip away from the phone.
- Once all of the buttons are free, the whole assembly should simply lift out.

Glue may be required to hold the new buttons to the phone.

This document was generated on 2020-11-28 06:55:56 AM (MST).

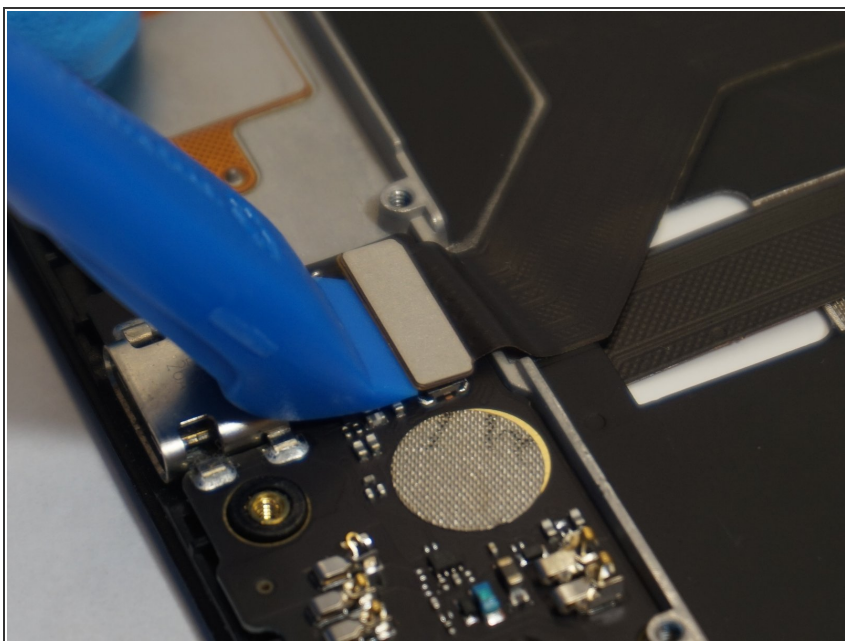


Step 17 — Charging Port Card



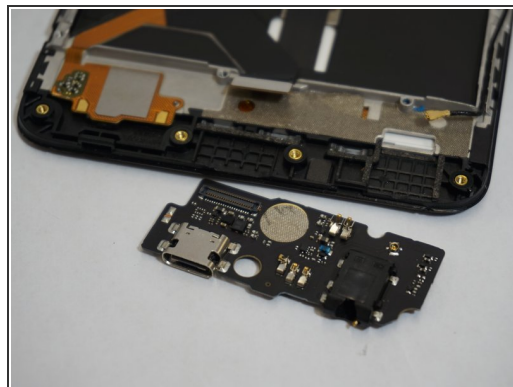
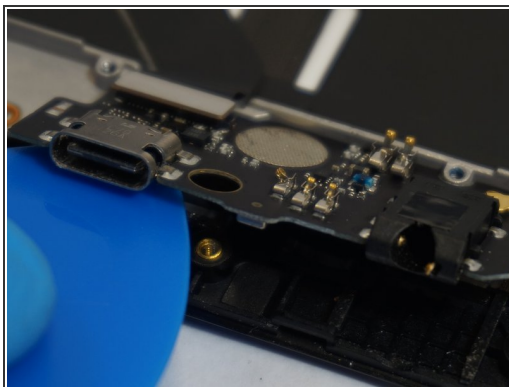
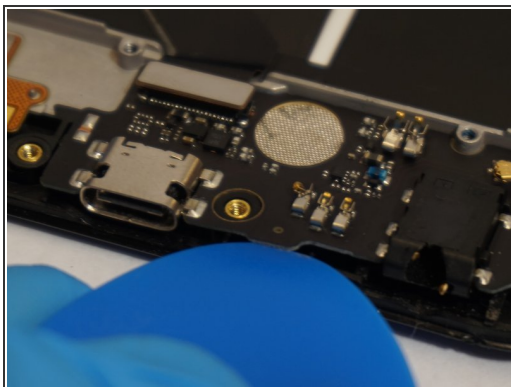
- Use a spudger to pry up the the antenna connector on the top right of the charging port card.

Step 18



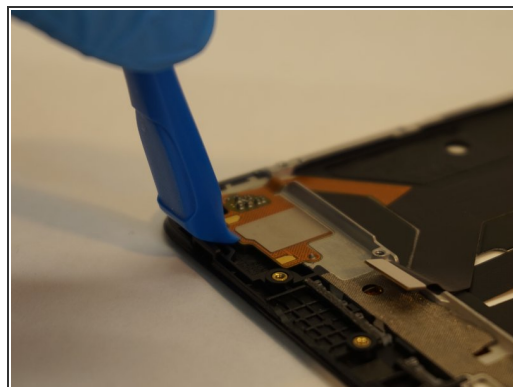
- Use a plastic opening tool to pry up and remove the primary connector for the card, located on the top left of the card.

Step 19



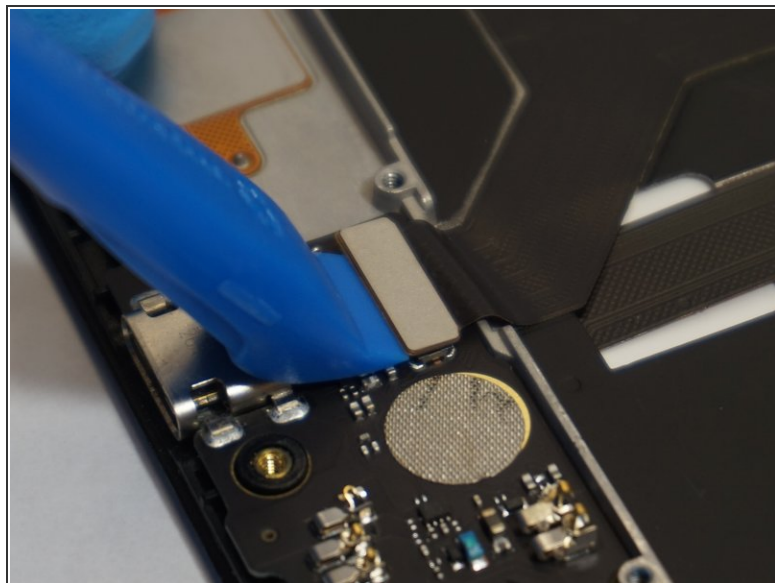
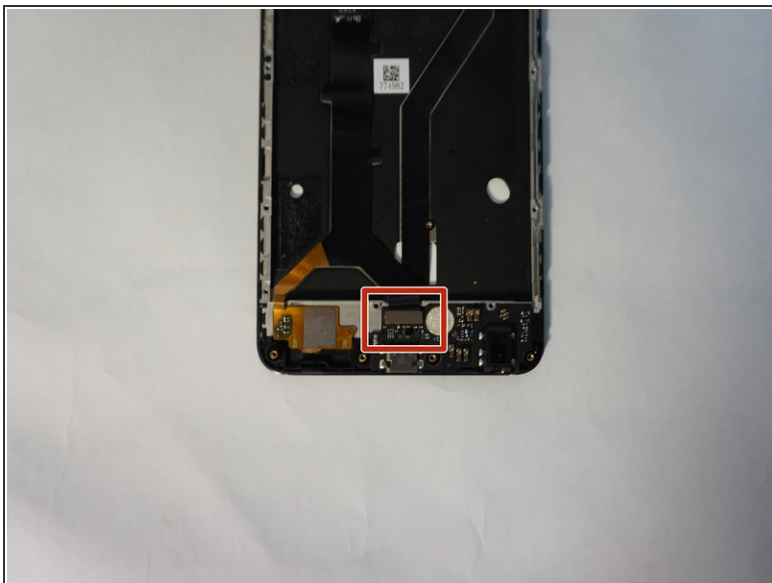
- Use a plastic opening tool, spudger, or opening pick to separate the bottom edge of the card away from the phone.
- Lift the bottom edge of the card high enough that you can grab it with your fingers, and simply remove it from the phone.

Step 20 — Screen/Digitizer



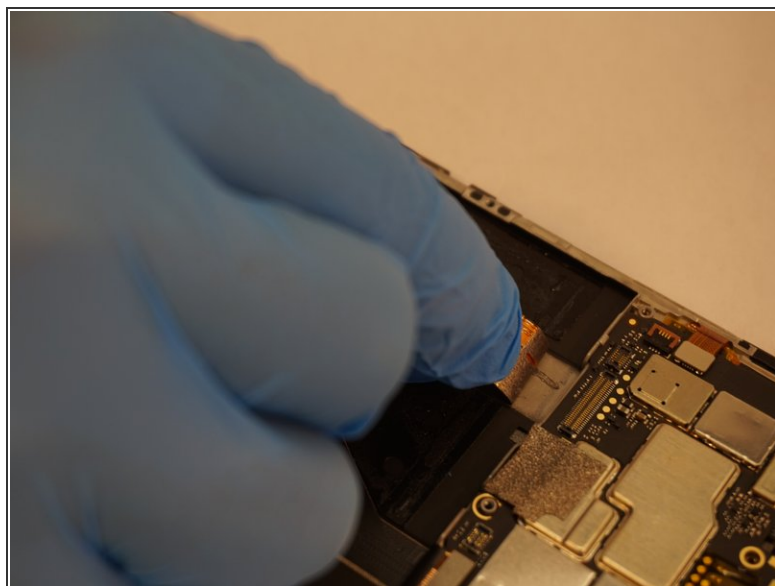
- Use a plastic opening tool to lift the lower connection cable, which is held on by adhesive, off of the phone frame.

Step 21



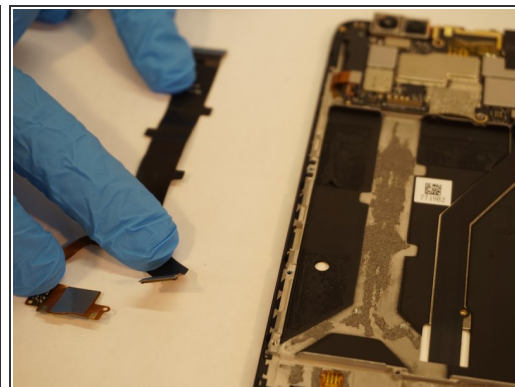
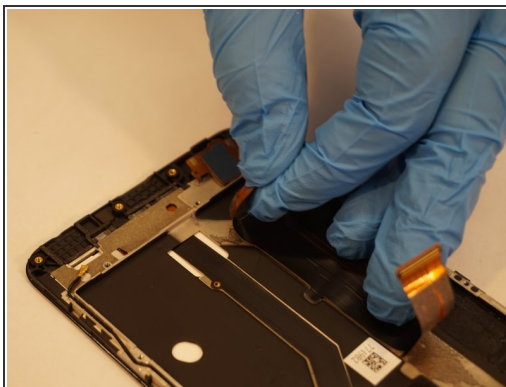
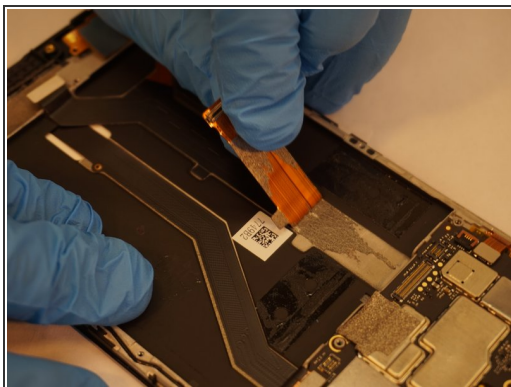
- Use the plastic opening tool to separate the connector ribbon from the bottom center of the phone.

Step 22



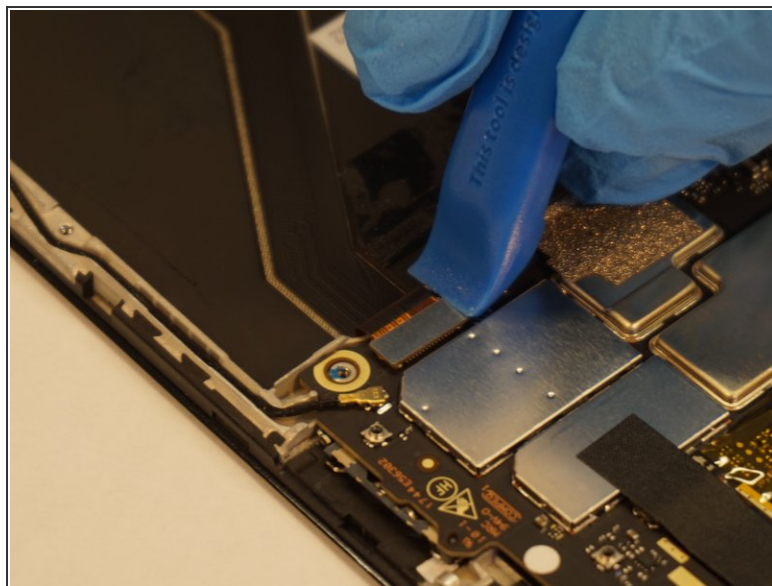
- Use a plastic opening tool to separate the first motherboard connector from the bottom left of the motherboard.

Step 23



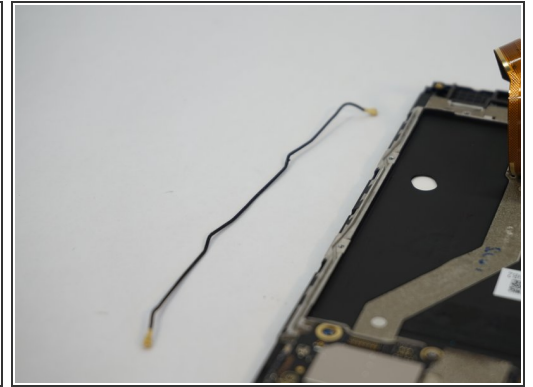
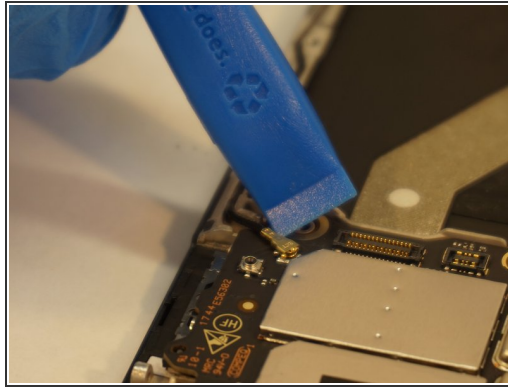
- Starting from the connector you just removed, carefully peel the ribbon cable away from the phone.
 - ☑ You may need to use an adhesive to reattach this cable during reassembly.
- Set the ribbon cable aside.

Step 24



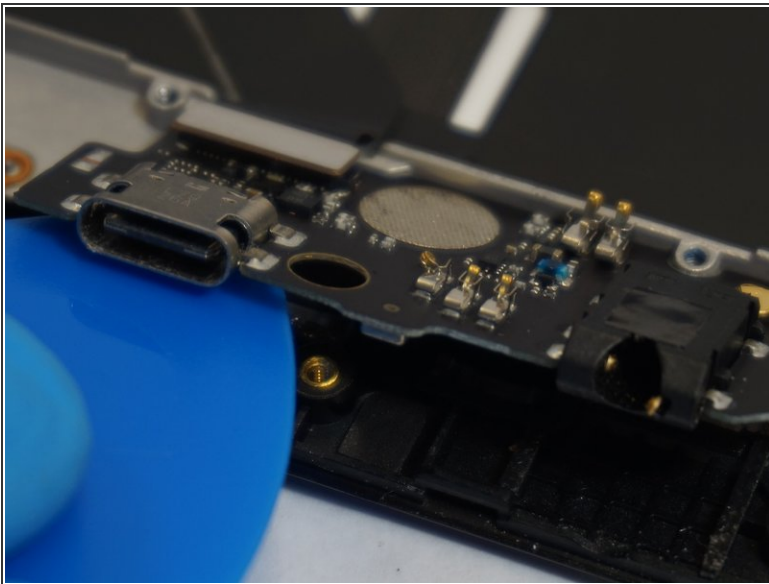
- Use a plastic opening tool to disconnect the second motherboard connector from the bottom right of the motherboard.

Step 25



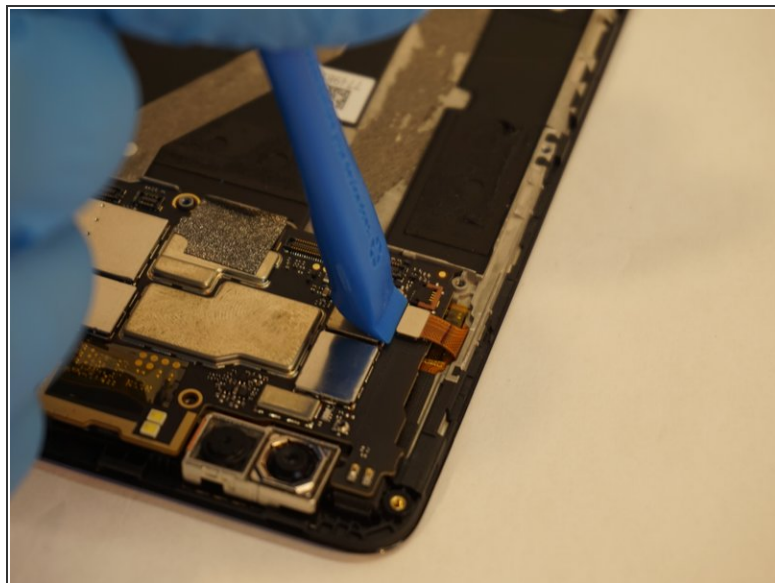
- Use a plastic opening tool to disconnect the upper antenna connector.
- Remove the antenna from the phone and set aside.

Step 26



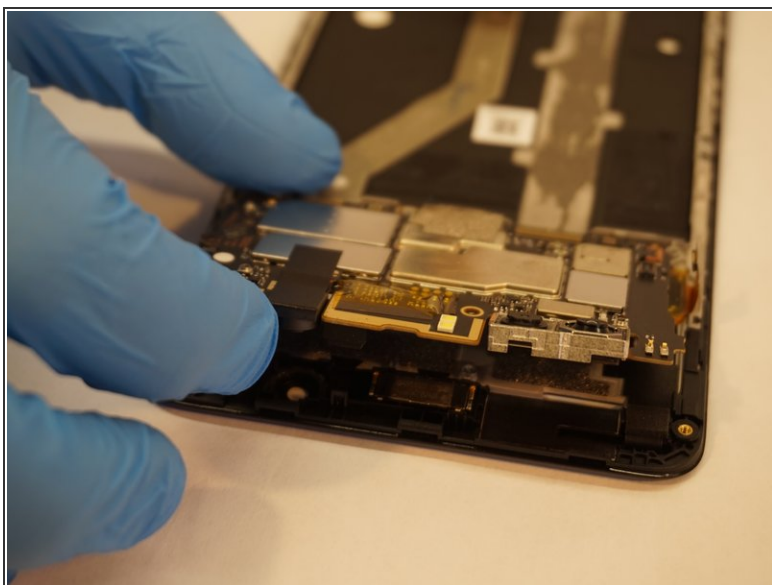
- Use the plastic opening tool to remove the charging port card of the phone.

Step 27



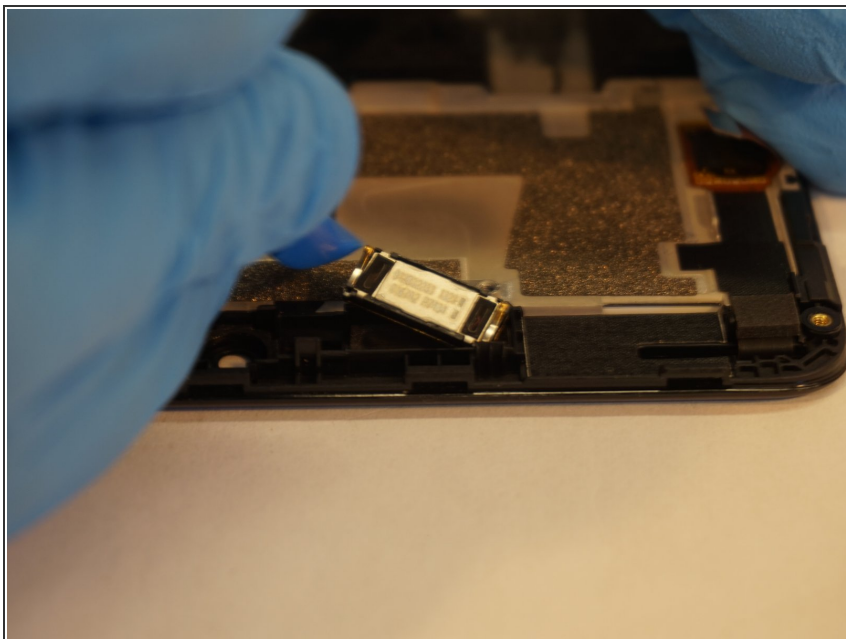
- Use a plastic opening tool to disconnect the digitizer ribbon connector located on the opposite side of the antenna connection and near the side button connector.

Step 28



- Carefully lift the motherboard out of the frame.

Step 29



- Use a plastic opening tool or spudger to remove the earpiece from the frame, located near the top of the phone.
- ☑ All of the components you will now have removed will go into a different frame which contains the new screen.

To reassemble your device, follow these instructions in reverse order.