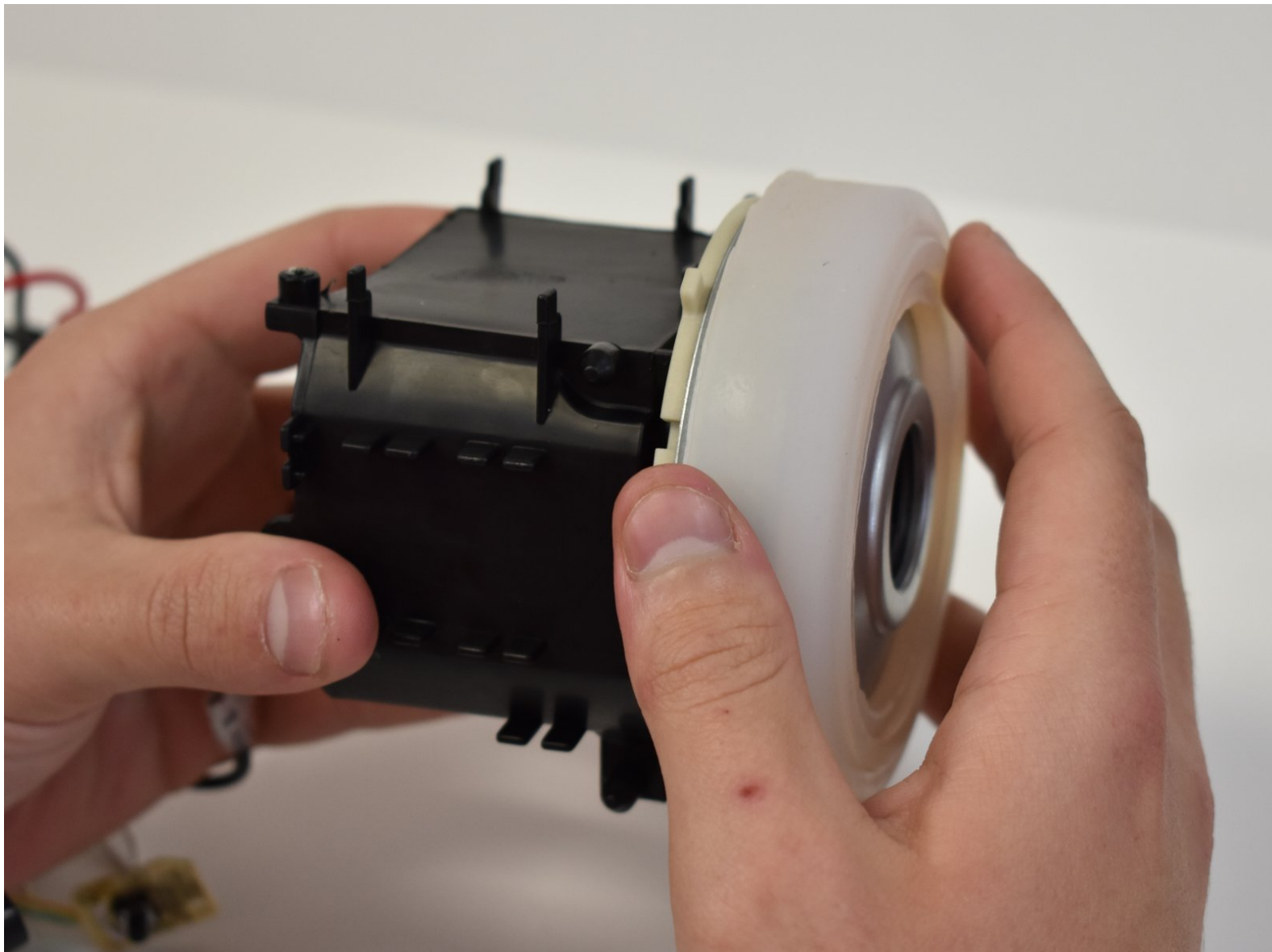




# Bissell Pet Hair Eraser Vacuum Motor Replacement

The vacuum motor provides the suction power for the machine. If you are experiencing a decrease in suction, it might be time to replace your vacuum motor.

Written By: Jim Lopez



---

## INTRODUCTION

The Bissell Pet Hair Eraser vacuum motor may have issues. This is a guide to replacing the vacuum motor.



### TOOLS:

- [Phillips #2 Screwdriver](#) (1)
-

## Step 1 — Dirt Cup



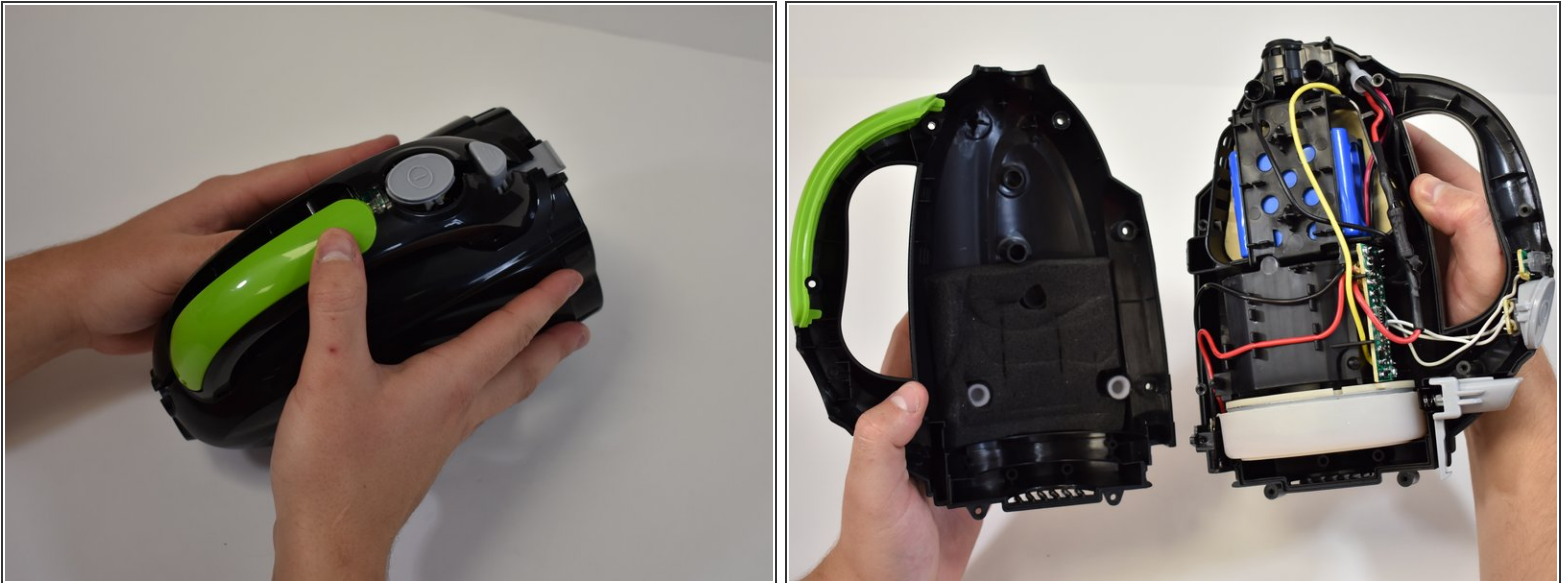
- Firmly grasp the handle and press the release button.
- Gently pull the dirt cup down and away from the vacuum body.

## Step 2 — Power Button



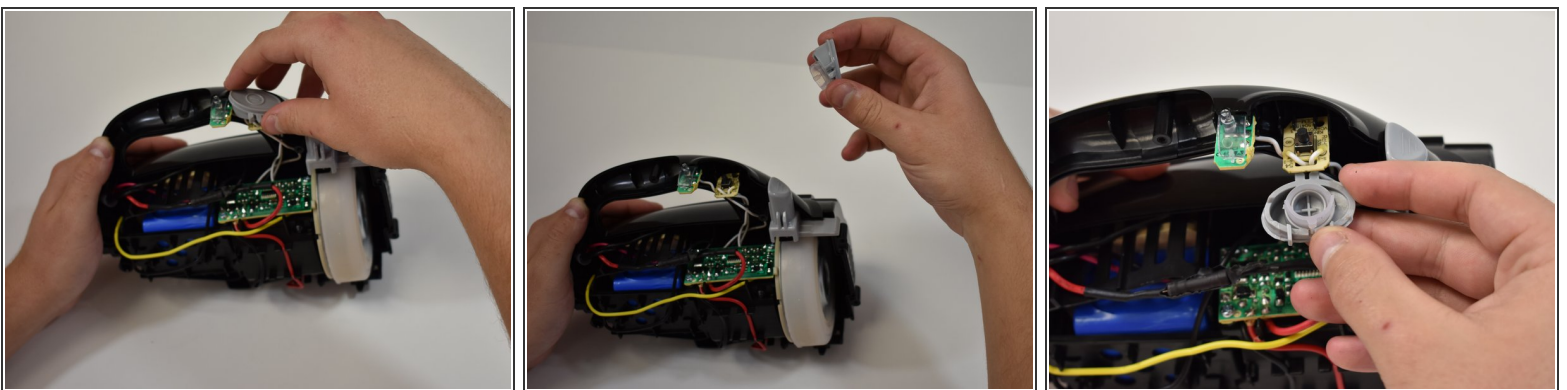
- Remove the six 1.2 mm Philips #2 screws from the handle and base.

## Step 3



- Grasp each half of the body and gently pull apart.
- ⓘ The green handle, power button, charge light lens, and dirt cup release are not fastened in place.
- Once the case is split apart these items may come dislodged.

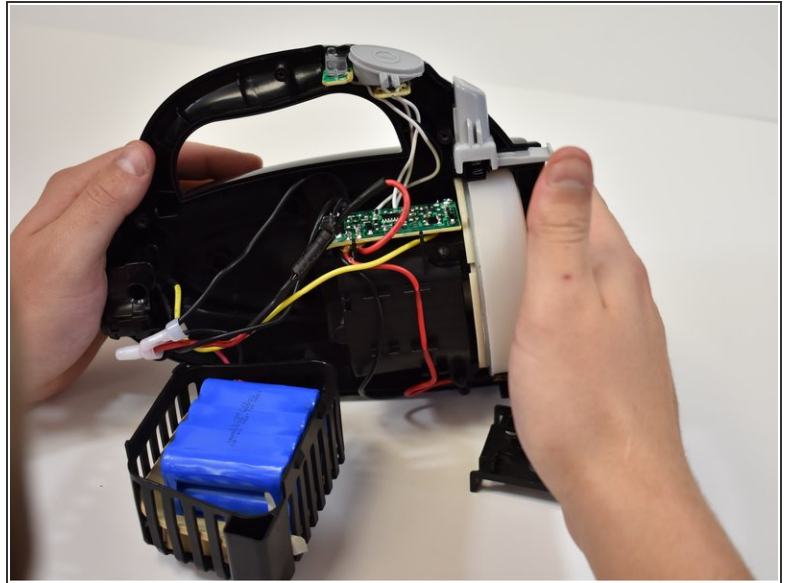
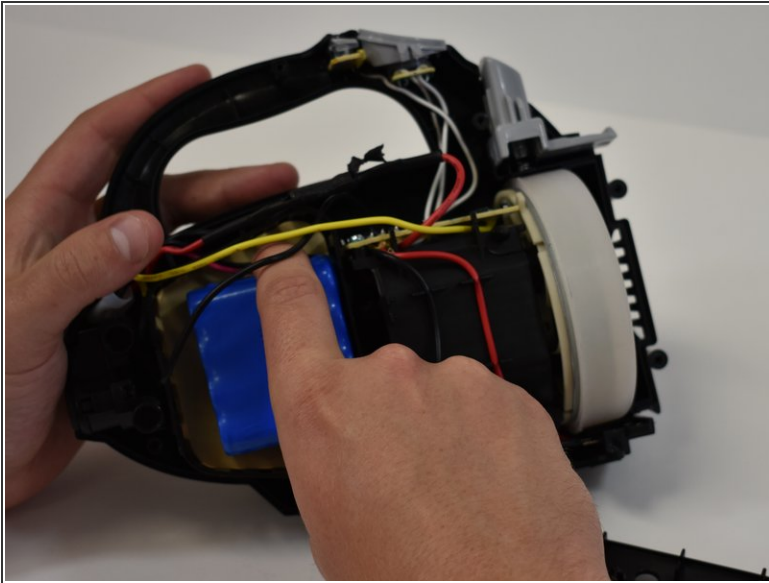
## Step 4



- The power button can be removed by gently lifting it off the circuitry.

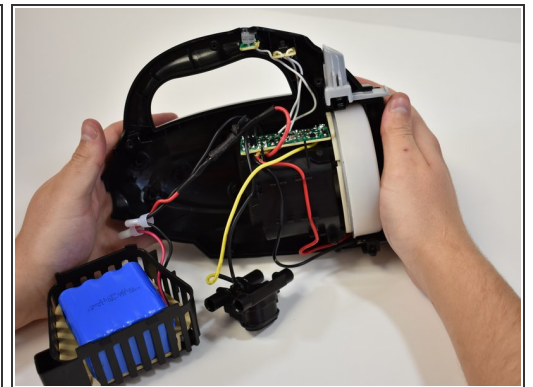
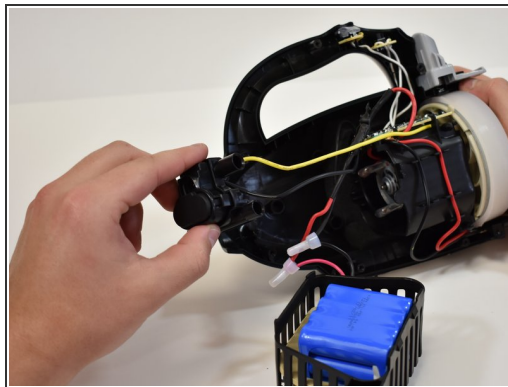
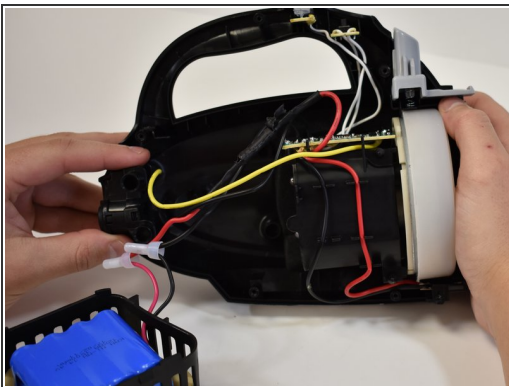


## Step 5 — Motherboard



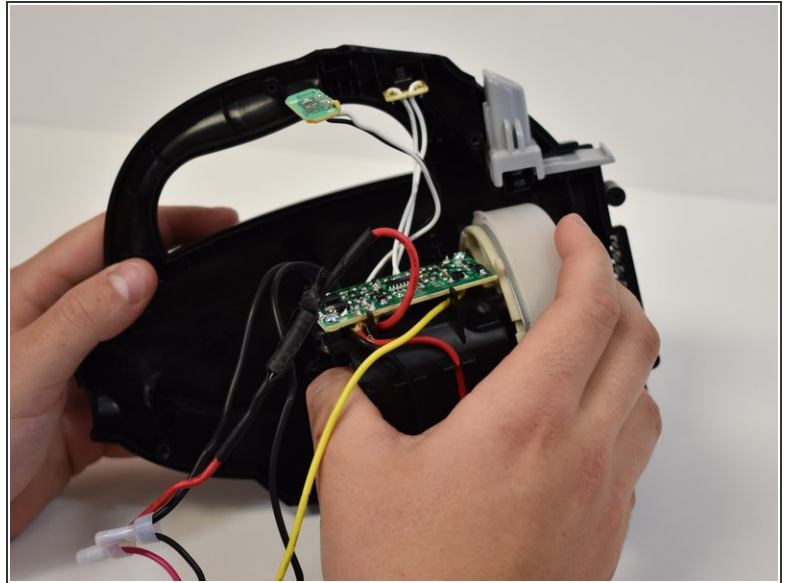
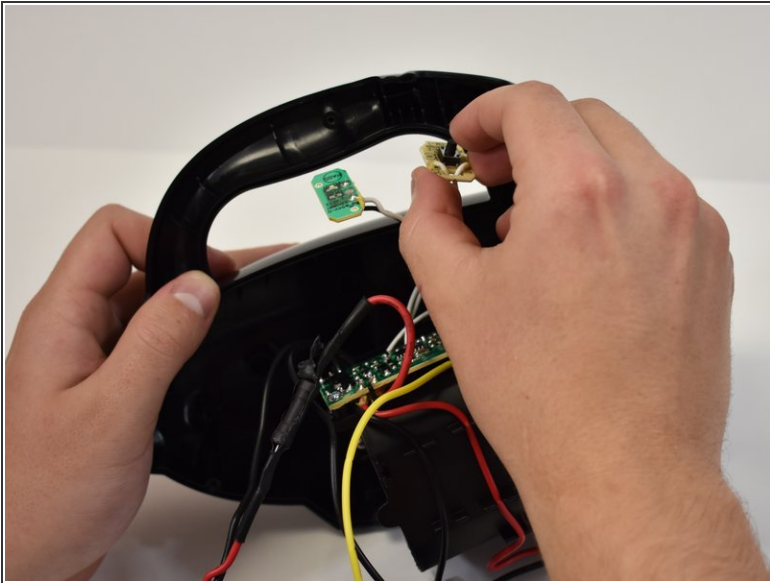
- Remove the battery plastic hold down by lifting it off the tabs.
- Remove the battery by lifting straight up.
- Position the battery aside.

## Step 6



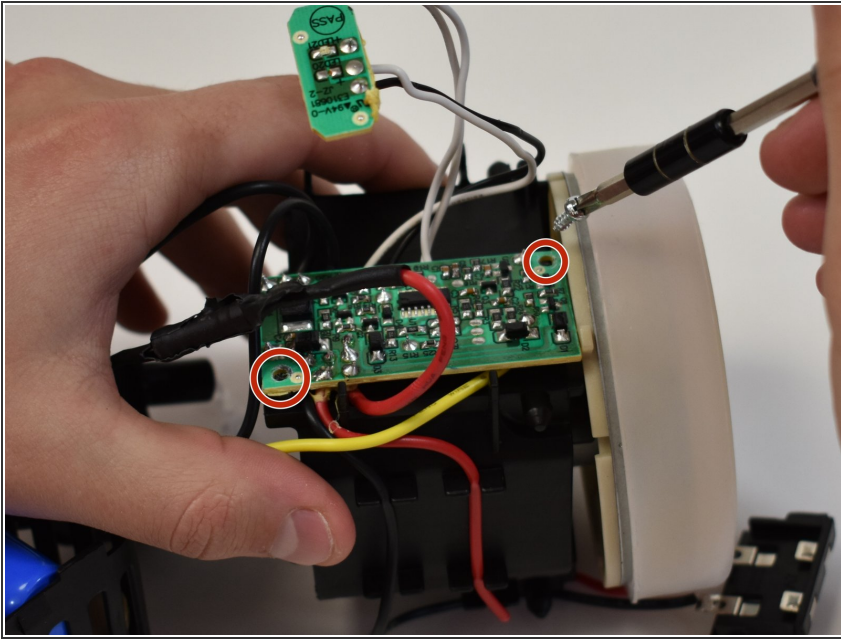
- Grasp the charger port and remove it by lifting it straight out of the case.
- Set the charger port next to the battery.

## Step 7



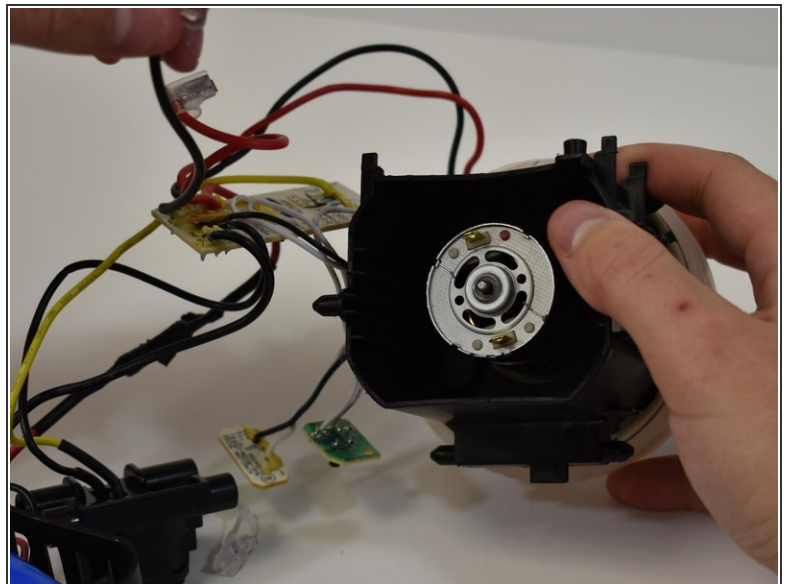
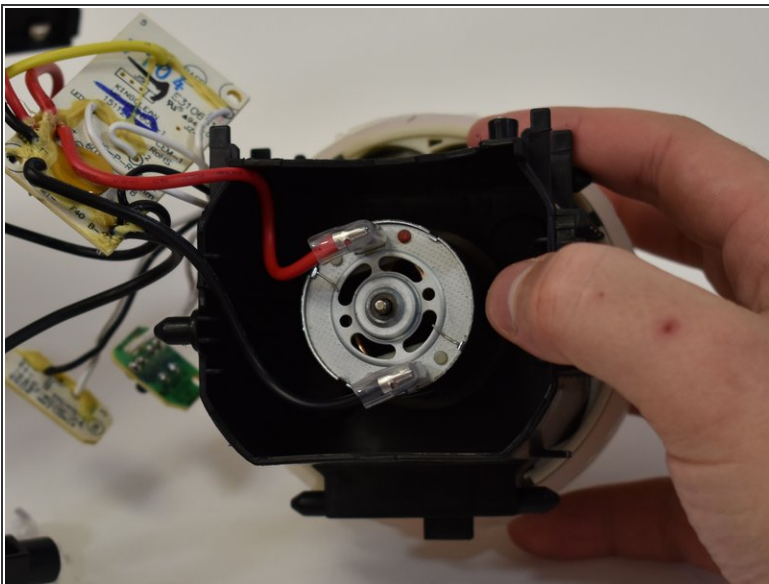
- Remove the power button and charge LED light by gently pulling straight out of the case.
- The vacuum motor can be removed by pulling straight out of the case.
- All internals are now removed.
- Set the case halves aside.

## Step 8



- Remove the two 1 mm Phillips #2 screws in the shown locations.

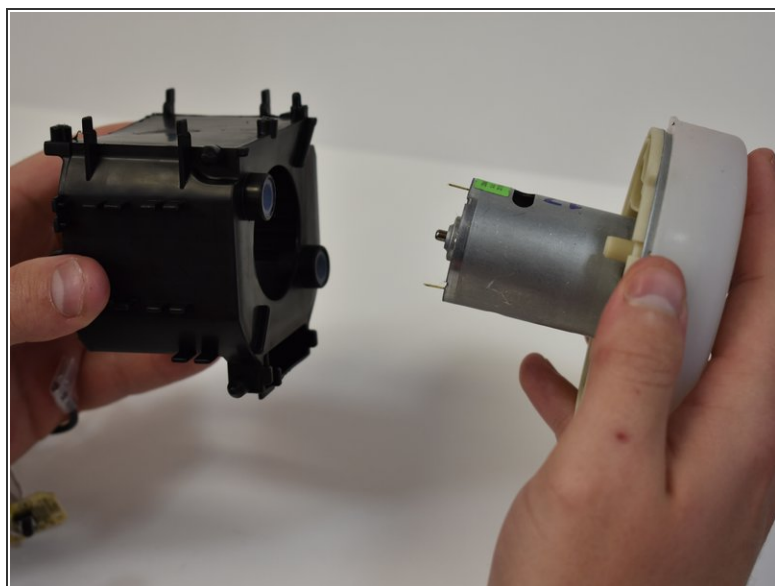
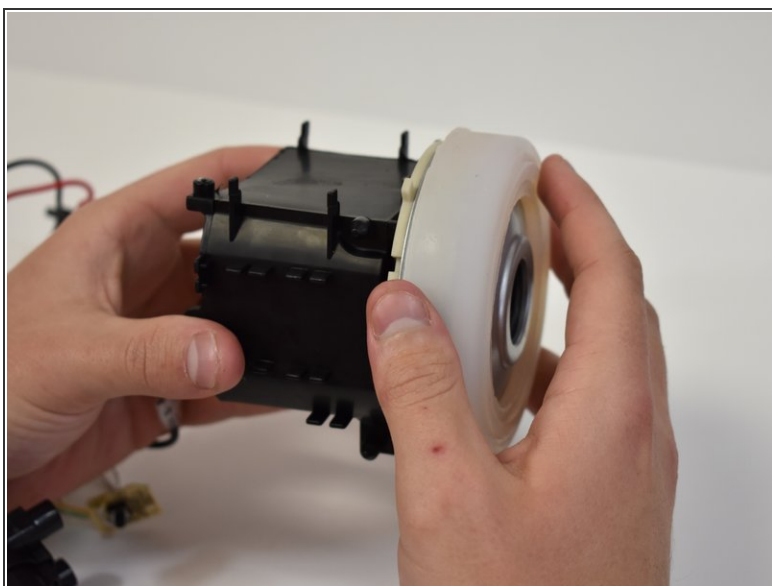
## Step 9



- Disconnect the power leads from the vacuum motor.
- ⓘ The red power lead goes on the terminal with the visible red dot.



## Step 10 — Vacuum Motor



- Grasp the vacuum motor and housing and pull them apart.

To reassemble your device, follow these instructions in reverse order.