



Acer Aspire 5534-1146 Hard Drive Replacement

this guide is to help you replace a broken hard drive or simple just put in a better one. this guide will show you the steps to do so.

Written By: Conner Burton





TOOLS:

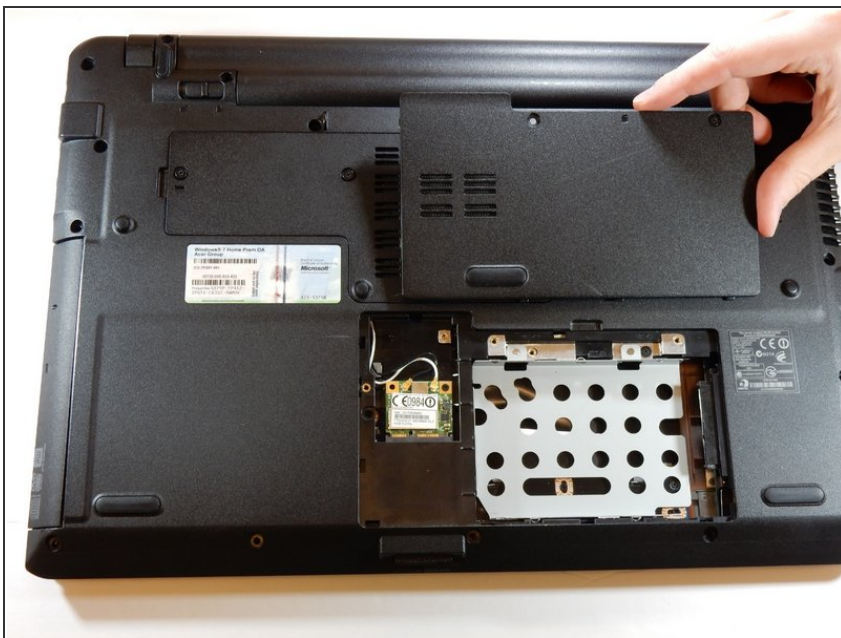
- [Phillips #0 Screwdriver](#) (1)
-

Step 1 — Hard Drive



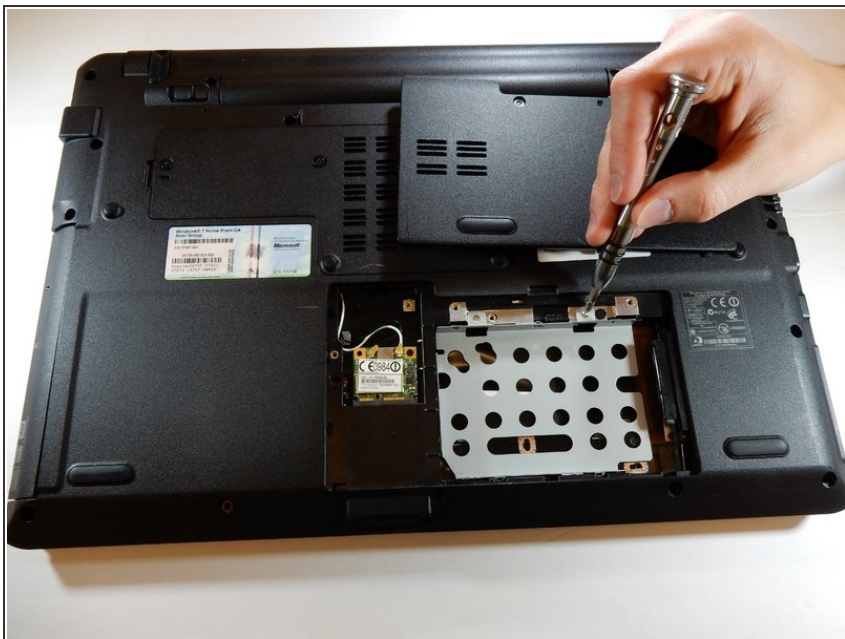
- Locate where the hard drive is located on the back side of the laptop and unscrew the two .8cm Long screws.

Step 2



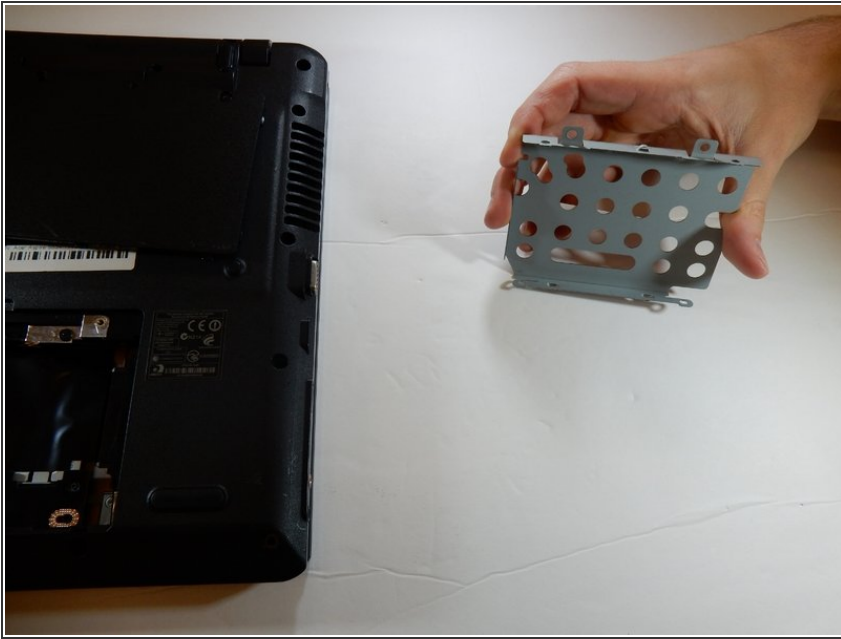
- Once you have have removed the back panel cover, find the hard drive's location.

Step 3



- Find and locate the two screws that are 0.8cm long that are holding the hard drive in place to the back metal plate.
- Carefully take a PH #0 screwdriver and remove the two screws.

Step 4



- Once you have unscrewed the two screws, carefully slide the hard drive the opposite direction of the screws that you just removed, slide the drive till it is free.

ⓘ You are now ready to remove the hard drive from it's compartment from the device.

To reassemble your device, follow these instructions in reverse order.