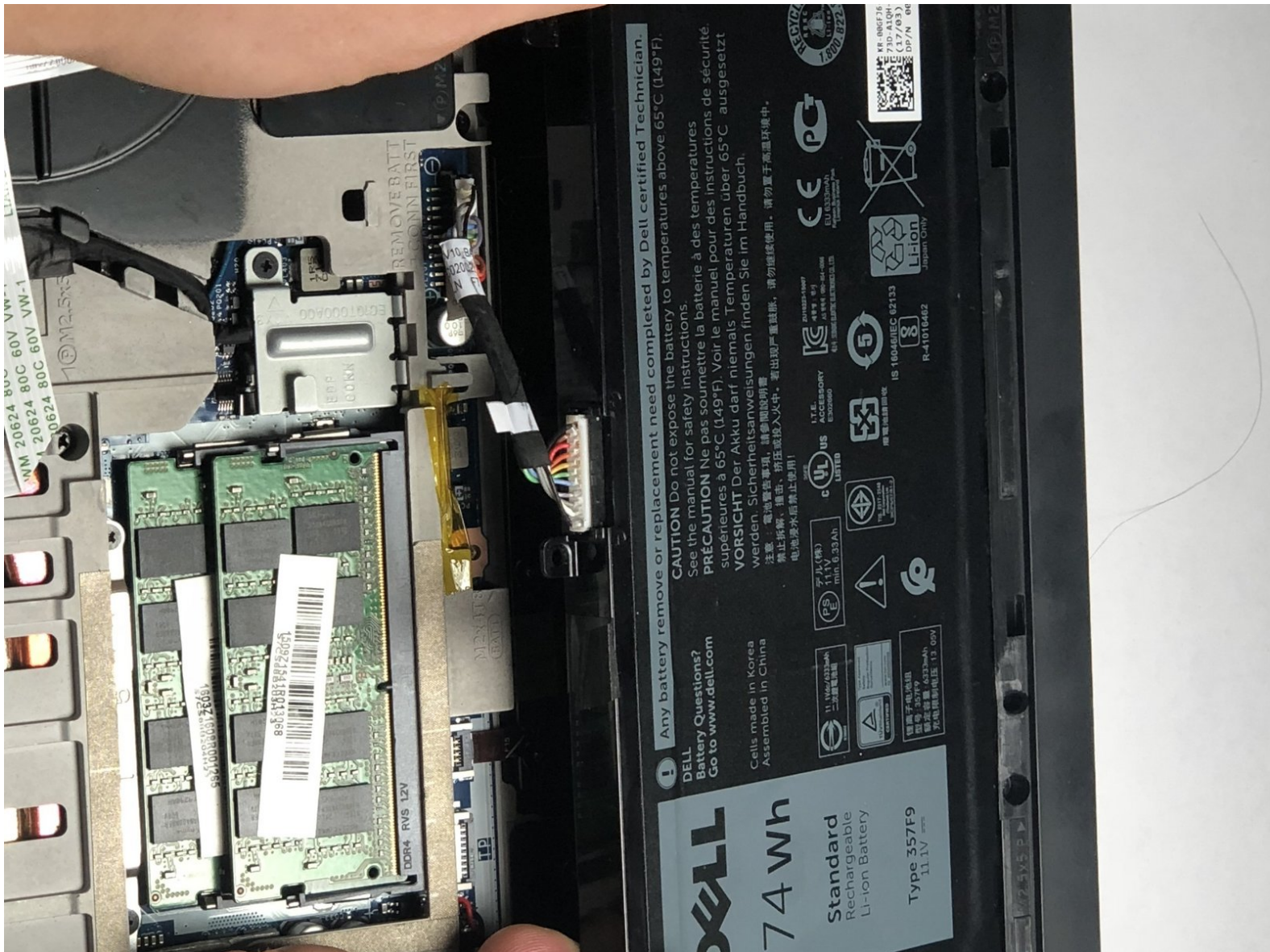




Dell Inspiron 15-7567 Battery Replacement

By following this guide correctly, the user can expect to easily remove the battery from the laptop.

Written By: Dallas Lamorie



INTRODUCTION

Taking out the battery is easy to replace when needed. It may need to be replaced if the battery dies quickly.

For your safety, discharge your battery below 25% before disassembling your device. This reduces the risk of a dangerous thermal event if the battery is accidentally damaged during the repair. If your battery is swollen, [take appropriate precautions](#).



TOOLS:

- [Phillips #1 Screwdriver](#) (1)
- [TR8 Torx Security Screwdriver](#) (1)



PARTS:

- [Dell Inspiron 15 357F9 Battery](#) (1)

Step 1 — Battery



⚠ Turn off laptop before beginning.

- Place the laptop upside down on a flat, stable surface.

Step 2



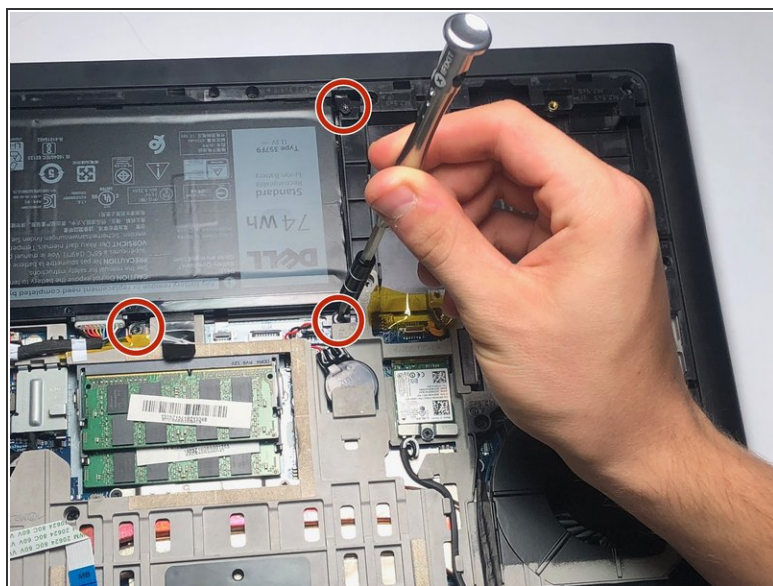
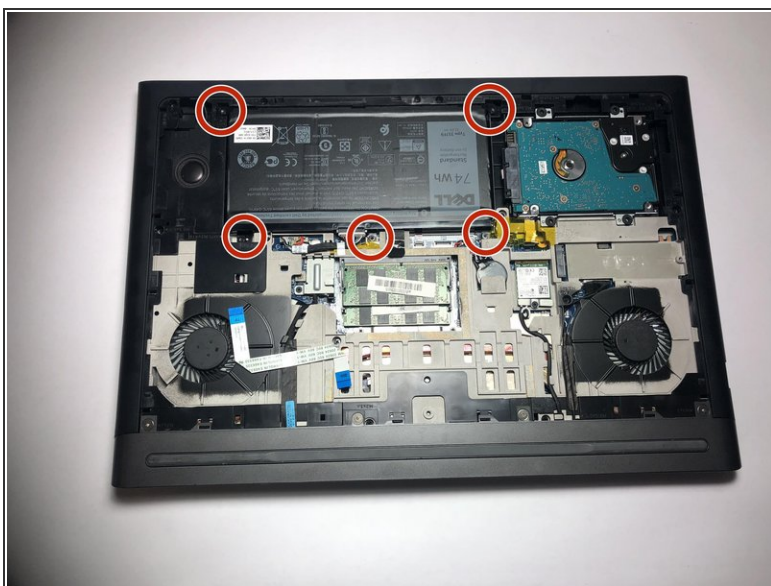
- Remove the 3mm screw in the location shown, using a Phillips #1 screwdriver.

Step 3



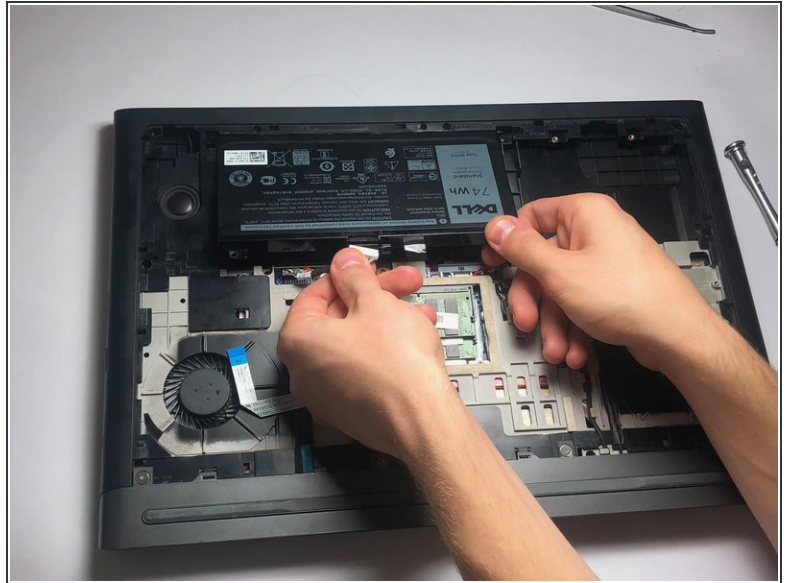
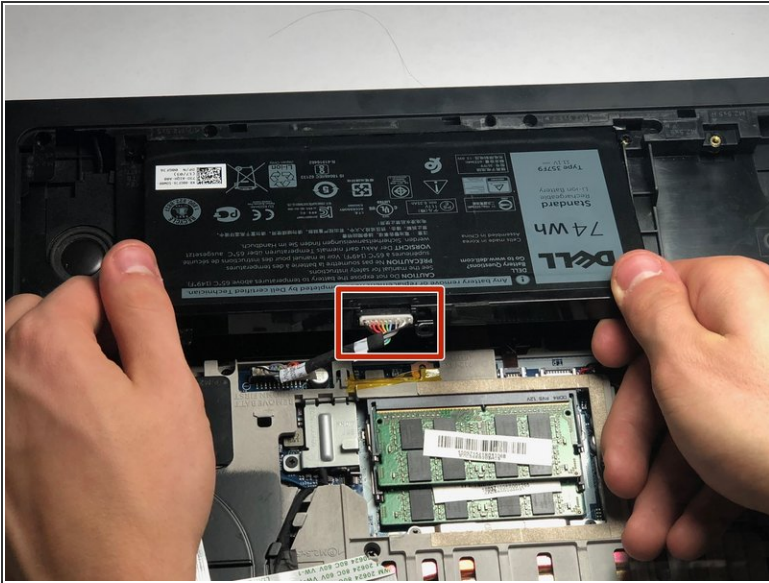
- Remove the panel from the sides and pull it out at an angle towards you.

Step 4



- Remove the five 3mm screws on the battery with a Torx (T8) screwdriver in the locations shown.

Step 5



- Disconnect the power cord from the battery by using a pair of tweezers, your fingers, or the opening tools from the iFixit pro tech tool kit.
- Pinch the clips on the left and right side while pulling on the cord at the same time.

Step 6



- Pull the battery towards you.
- Make sure to pull at an upward angle.

To reassemble your device, follow these instructions in reverse order.