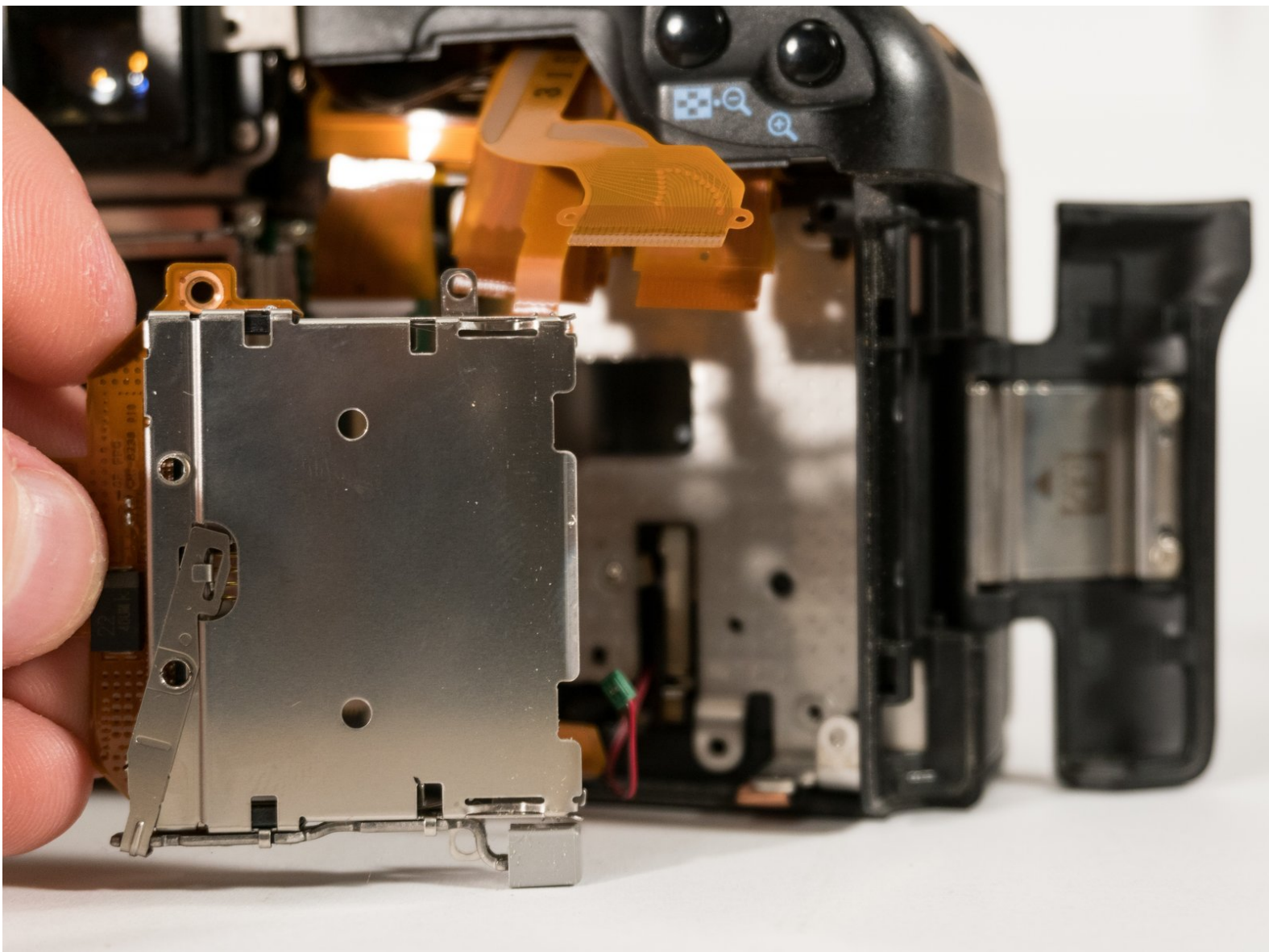




# Canon EOS 20D CF Card Slot Replacement

This will help people to fix/replace their CF card slot with damaged pins, which is a fairly typical issue for this model of camera.

Written By: Alec M





## TOOLS:

- [Fingers](#) (2)

Thumbs

*I hope you at least have two fingers even if they aren't thumbs :D*

- [Phillips #0 Screwdriver](#) (1)
- [Essential Electronics Toolkit](#) (1)

## Step 1 — Remove the eyepiece cap



- Pull up on both sides of the the eyepiece cap. It should come off with little pressure.

## Step 2 — Remove screws from under the eyepiece cap



- Remove the two screws hidden under the viewfinder eyepiece cap.



### Step 3 — Remove hidden screw and other visible screw



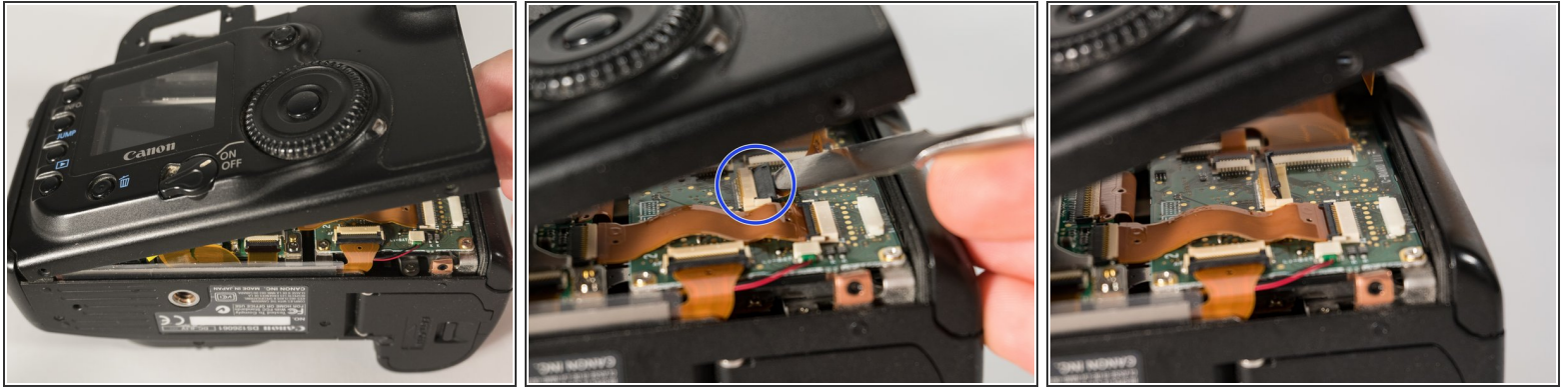
- Peel off the rubber grip on the back by grasping one of the corners and pulling it away from the camera body.
- Once removed, a hidden screw is revealed.
- Remove both screws from the rear of the camera.

### Step 4 — Remove bottom screws



- Remove the two indicated screws from the bottom of the camera.

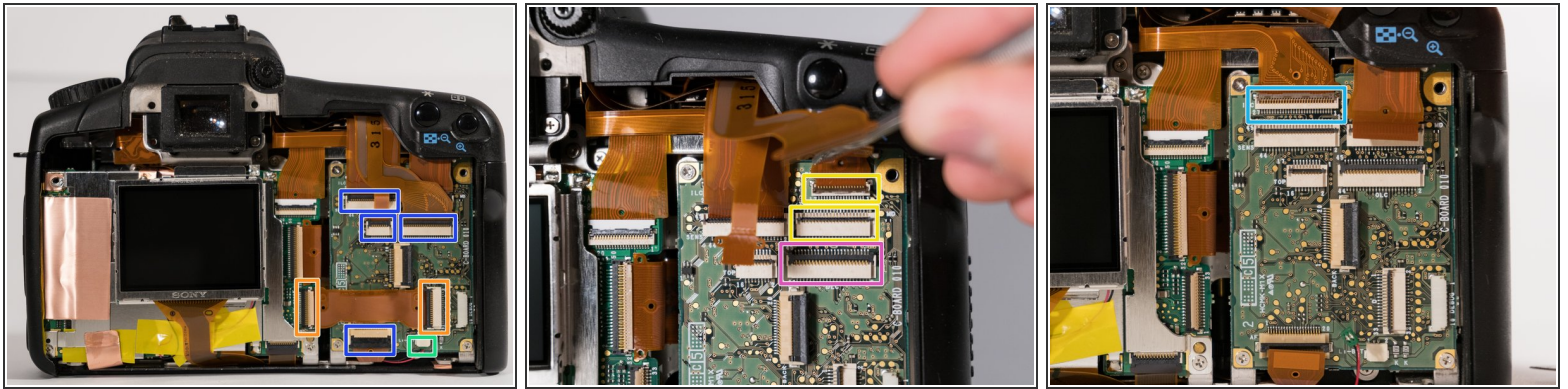
## Step 5 — Lift and remove the rear panel



**⚠** When lifting the panel, make sure not to lift it too high, since you'll run the risk of tearing the cable, or damaging the connector on the board.

- Flip the lock on the flex cable connector up with a spudger.
- The front panel should pop off, now that the cable has been disconnected.
- i** When reassembling the device, make sure to insert the left side of the front panel first, since it has a small lip that needs to fit under the left part of the camera case.

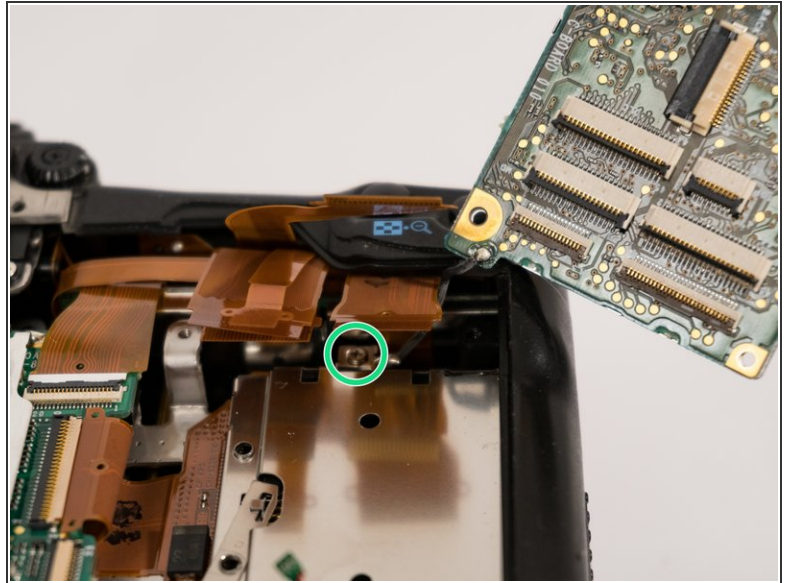
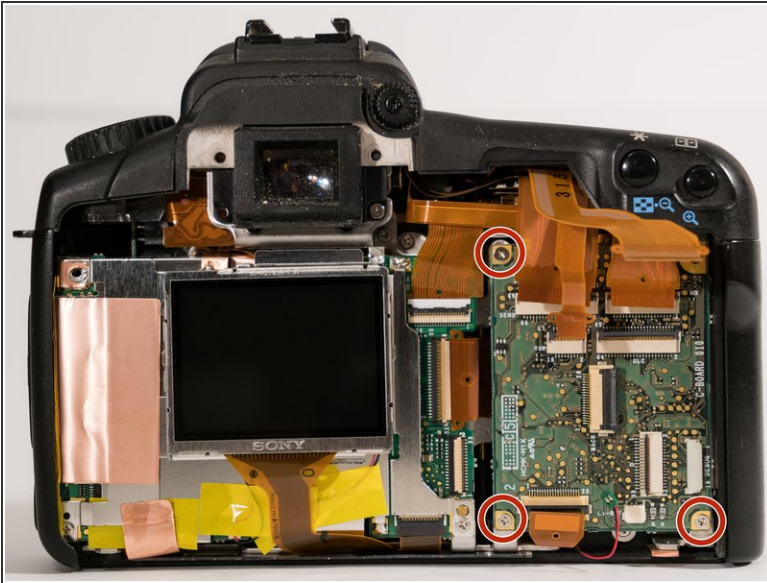
## Step 6 — Disconnect all the labeled cables



- Disconnect all the indicated connectors by opening their latches.
- Remove the flex cable that connects the logic board to the secondary control board.
- Pull the small green connector out of its socket. Be careful when removing it, as it is possible to tear the tiny wires running into the connector.
- Disconnect the two hidden connectors under the top connector indicated in pink.
- Disconnect the third hidden connector.

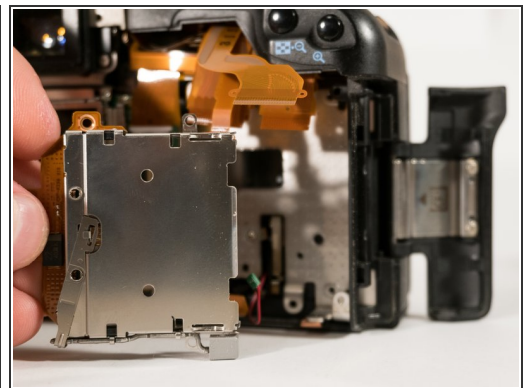
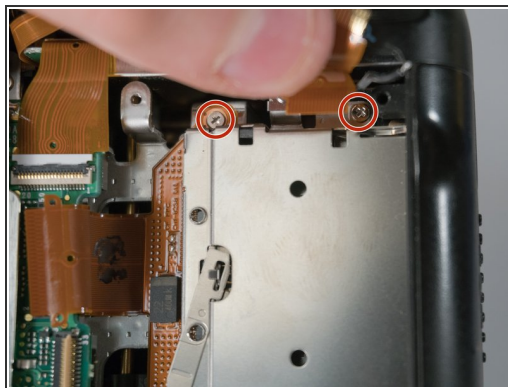
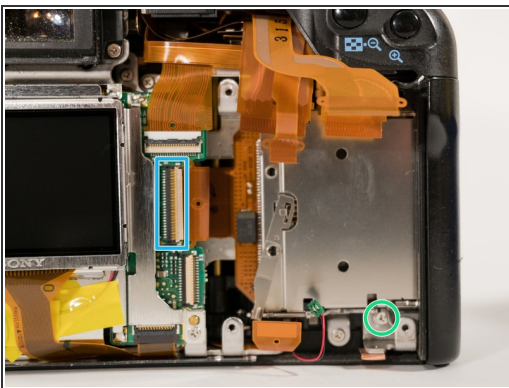


## Step 7 — Remove the secondary control board



- Remove the three screws from the edges of the board.
- Flip the board up and out so that the ground connection can be unscrewed.

## Step 8 — CF Card Slot



- Open the connector for the CF slot.
- Remove the screw that attaches the bottom of the CF slot.
- Remove the two last screws attaching the top of the CF slot.
- Remove the CF slot.

To reassemble your device, follow these instructions in reverse order.