



Toshiba Satellite C55-A5300 Battery Replacement

Replace the battery in your Toshiba Satellite C55-A5000.

Written By: Andrew Pobrica



INTRODUCTION

This guide will help you if you need to replace the battery in your laptop. Replacing the battery will fix any issues caused by a old or faulty battery. It is very straightforward and can be completed regardless of technical knowledge or skill level.



TOOLS:

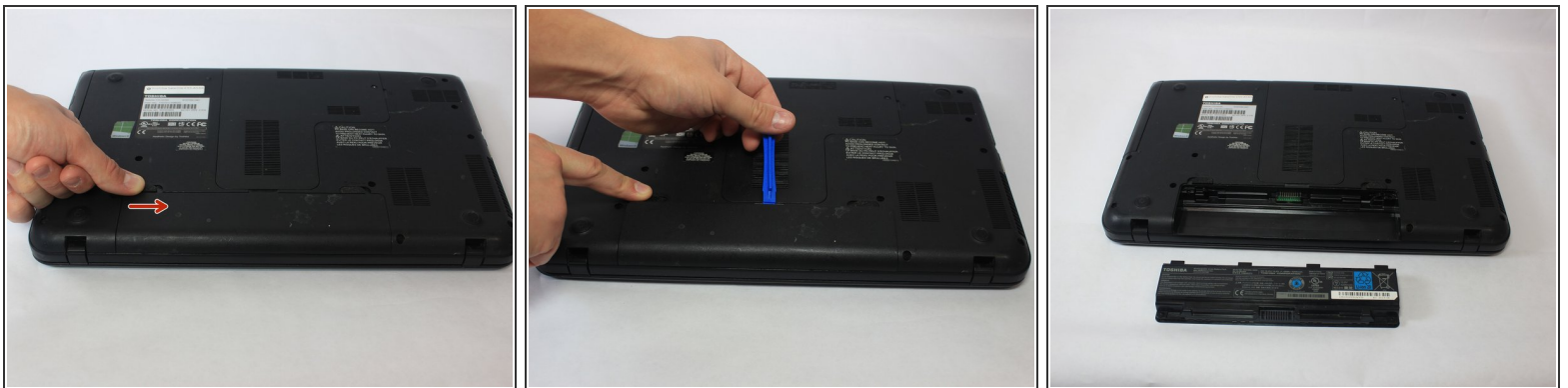
- [iFixit Opening Tools](#) (1)
-

Step 1 — Battery



- With the Laptop off, turn it over.
- The battery is located next to the screen hinges.
- Move the locking tab located directly above the battery on the right side, all the way to the left. It will stay in place by itself.

Step 2



- Slide the tab identical to the first one on the right side above the battery pack to the right. This tab is spring loaded, so be sure to hold it.
- Insert your tool or your fingernail into the notch just above the center of the battery pack, and lift the battery pack out of the device.

To reassemble your device, follow these instructions in reverse order.