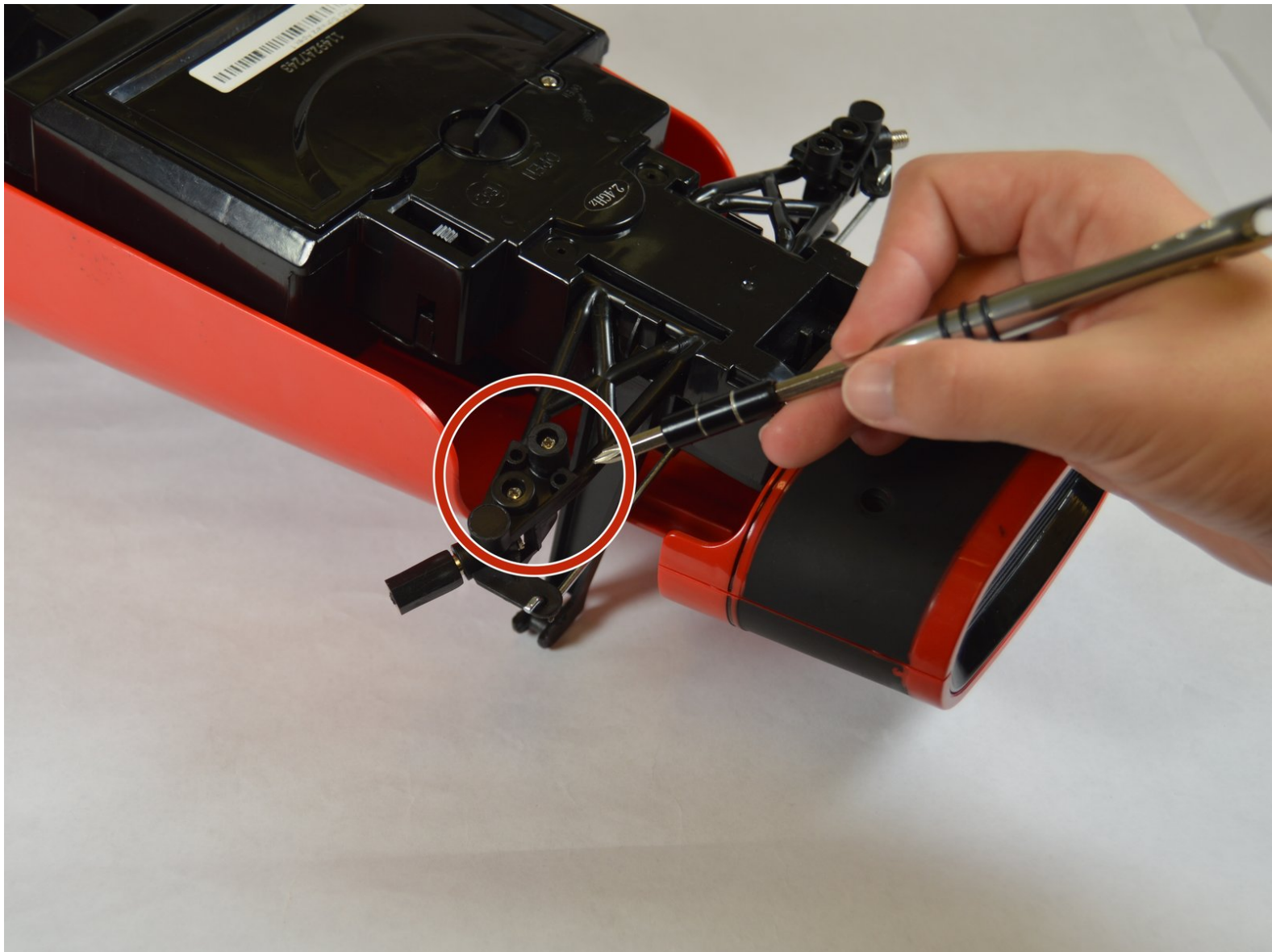




FAO Schwarz Apex 1 Front Axle Replacement

Replace a broken axle to restore steady mobility or balance to your Apex 1.

Written By: Carsyn Bernhardt



INTRODUCTION

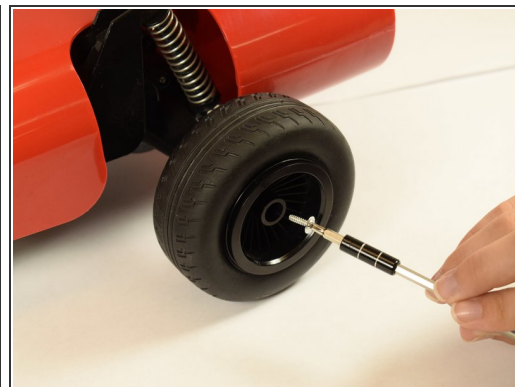
Is your FAO Schwarz Apex 1 vibrating or making odd noises while driving? This guide will show you how to replace a broken axle to correct any errors shown in the vehicle's performance. All this fix requires is the J1 Screwdriver Bit to remove and reinstall up to four 10mm screws throughout the axle replacement process.



TOOLS:

- [JIS #1](#) (1)
 - [iFixit Opening Tools](#) (1)
-

Step 1 — Wheel



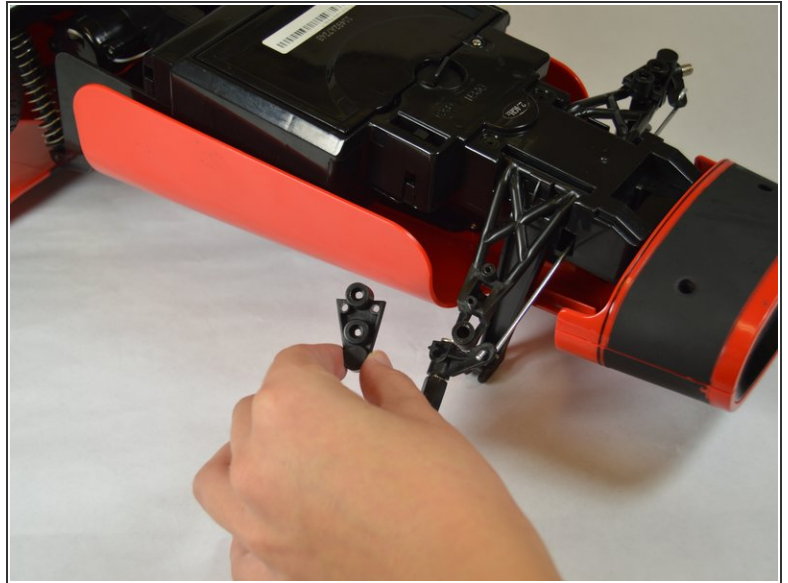
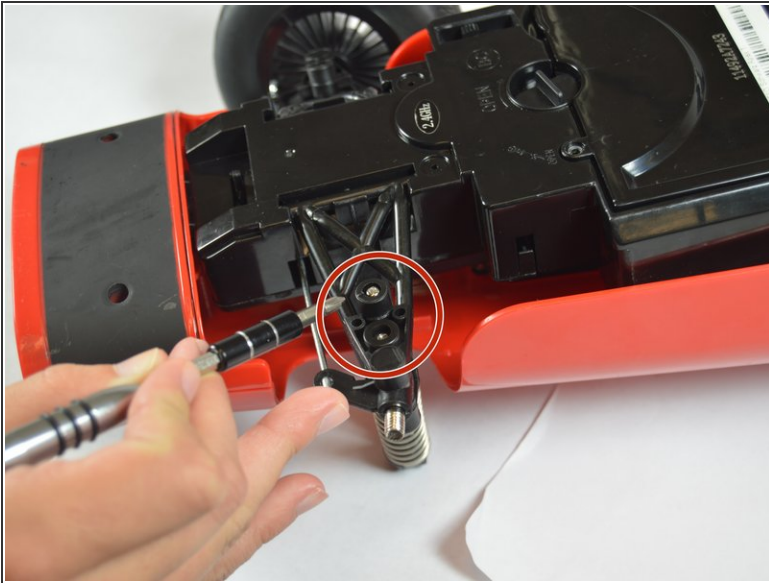
- Position device so that the wheels are on a firm surface .
- Using a J1 Screwdriver bit, remove the 11 mm screw from the center of the wheel.

Step 2



- After removing the 11 mm screw, firmly grip the wheel and pull away from the vehicle.

Step 3 — Front Wheel Springs



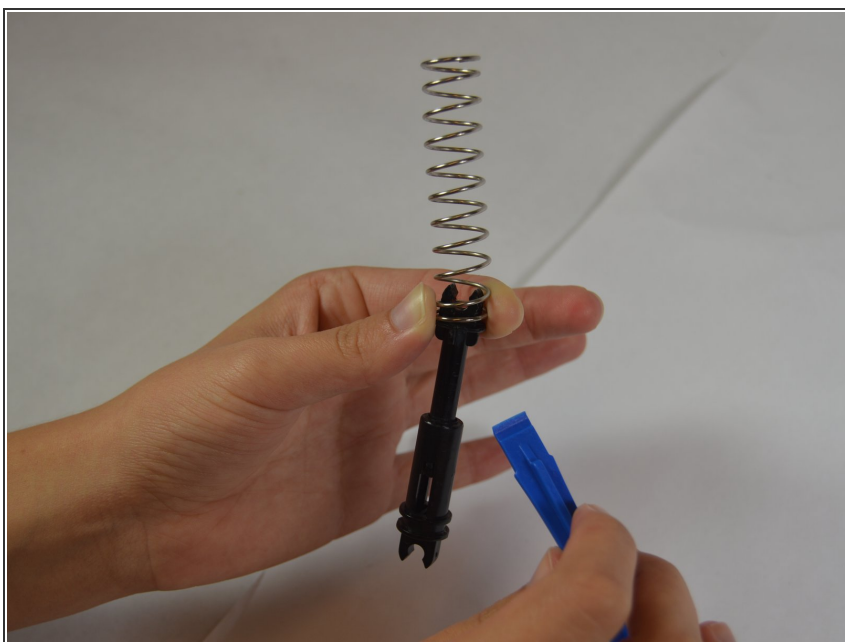
- Position device upside down so that the screws on the plastic axle pieces can be removed.
- Use J1 screwdriver bit to remove two 10 mm screws to remove the plastic axle pieces to make access to the telescopic piston easier.

Step 4



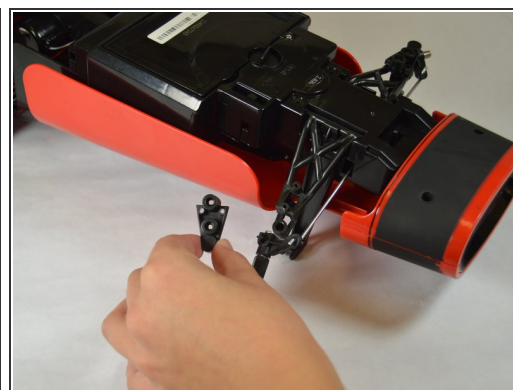
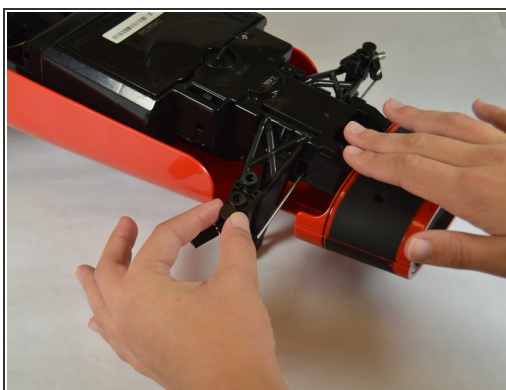
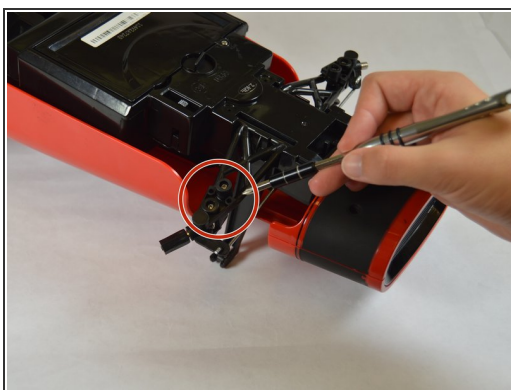
- Secure a firm grip on the spring and telescopic piston.
- ⚠ Pull telescopic piston holding the spring off the device (this may be difficult).

Step 5



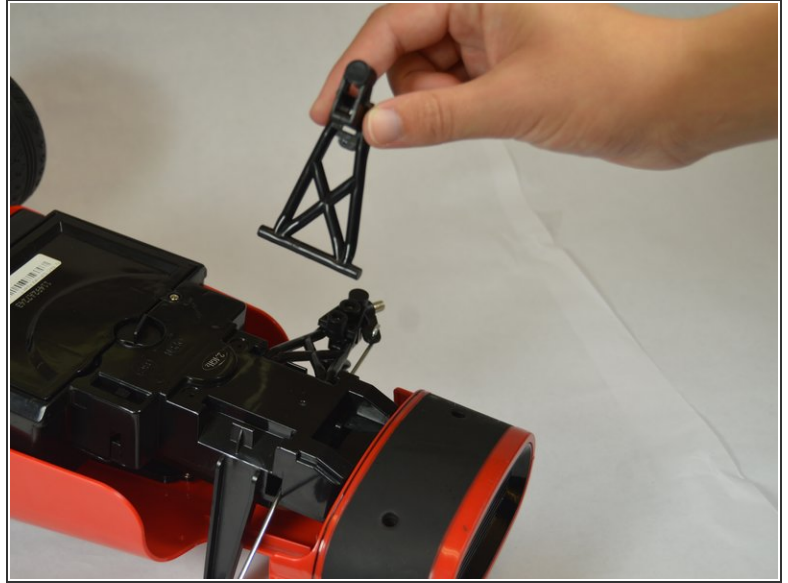
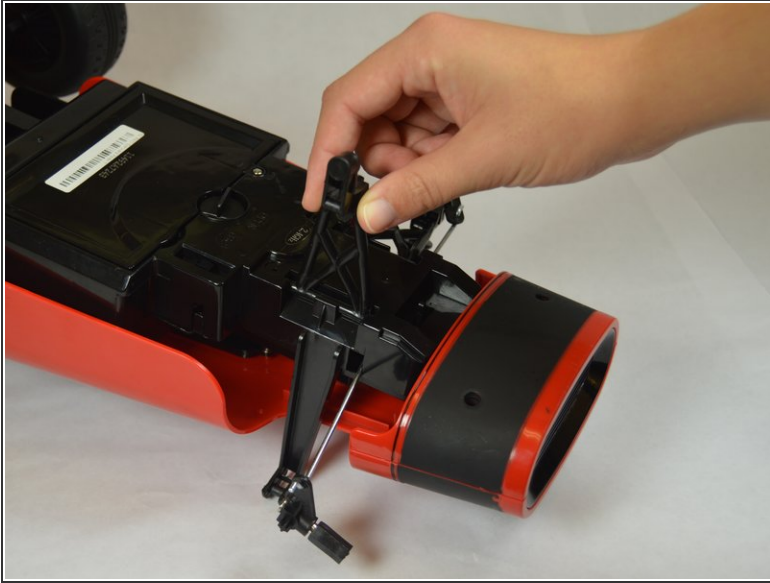
- Using a tool such as a spudger, gradually maneuver spring off of telescopic piston.

Step 6 — Front Axle



- Carefully turn the vehicle over so that the bottom side is facing upward.
- Using a J1 Screwdriver bit, remove the two 10 mm screws that secure the wheel bearing.
- Pull the plastic piece that secures the wheel bearing off of the axle.

Step 7



- Position the axle entirely upright before lifting away from the vehicle.

To reassemble your device, follow these instructions in reverse order.