



Canon EOS 20D Rear Case Replacement

Shows how to replace the front cover on your EOS 20D that houses all the rear buttons and controls.

Written By: Alec M





TOOLS:

- [Fingers](#) (2)

Thumbs

I hope you at least have two fingers even if they aren't thumbs :D

- [Phillips #0 Screwdriver](#) (1)
-

Step 1 — Remove the eyepiece cap



- Pull up on both sides of the the eyepiece cap. It should come off with little pressure.

Step 2 — Remove screws from under the eyepiece cap



- Remove the two screws hidden under the viewfinder eyepiece cap.

Step 3 — Remove hidden screw and other visible screw



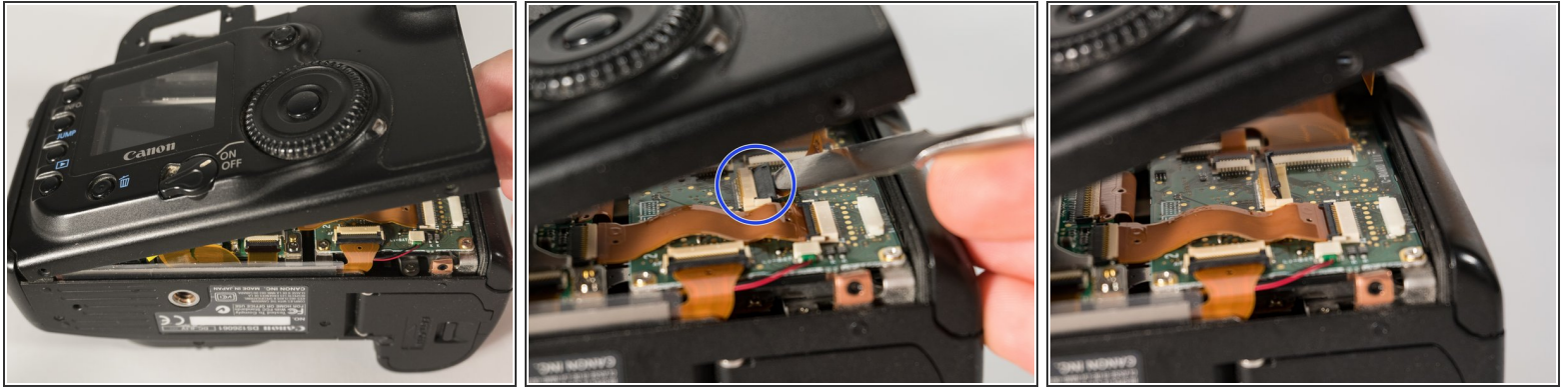
- Peel off the rubber grip on the back by grasping one of the corners and pulling it away from the camera body.
- Once removed, a hidden screw is revealed.
- Remove both screws from the rear of the camera.

Step 4 — Remove bottom screws



- Remove the two indicated screws from the bottom of the camera.

Step 5 — Lift and remove the rear panel



⚠ When lifting the panel, make sure not to lift it too high, since you'll run the risk of tearing the cable, or damaging the connector on the board.

- Flip the lock on the flex cable connector up with a spudger.
- The front panel should pop off, now that the cable has been disconnected.
- i** When reassembling the device, make sure to insert the left side of the front panel first, since it has a small lip that needs to fit under the left part of the camera case.

To reassemble your device, follow these instructions in reverse order.