



Dell Inspiron 15-7547 LCD Assembly Replacement

If your laptop is experiencing issues regarding the display, it may need to be replaced. This guide will show you how.

Written By: Kevin Smith



INTRODUCTION

This guide shows how to remove the LCD assembly from a Dell Inspiron 15-7547



TOOLS:

- [Phillips #0 Screwdriver](#) (1)
 - [Spudger](#) (1)
-

Step 1 — Bottom Cover



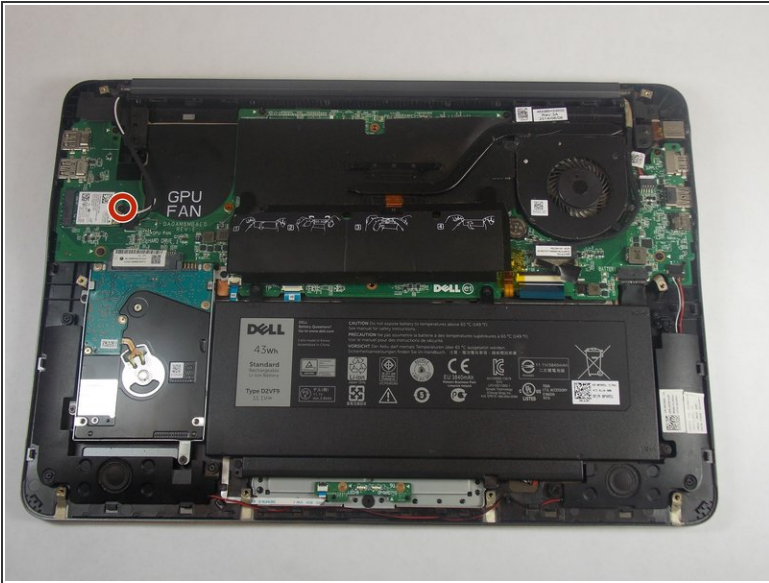
- ❗ Before you begin, be sure to turn off your laptop and unplug it from the outlet.
- Close the display and flip the laptop on its back.
- Loosen the ten 5.0 mm-long Phillips #0 screws.
 - The four screws marked with orange will remain captive to the cover.

Step 2



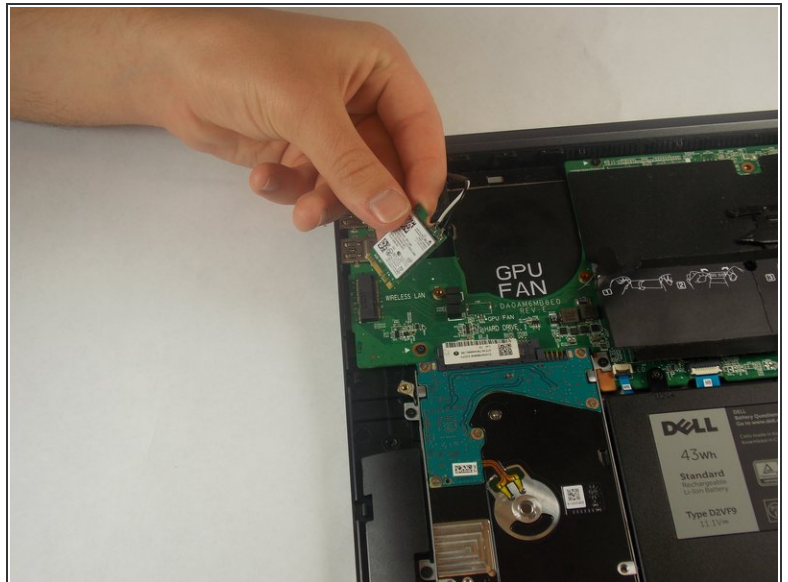
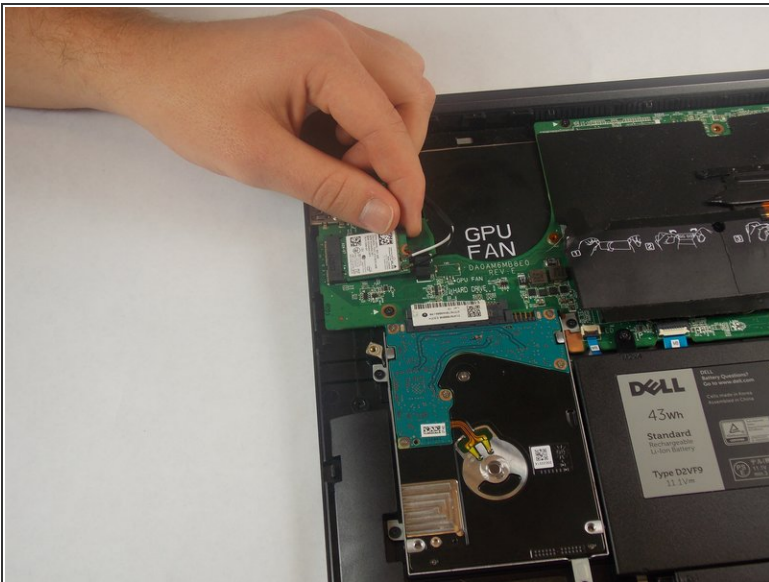
- Use a spudger to pry up and loosen the back cover.
- Remove the back cover.

Step 3 — WiFi Card



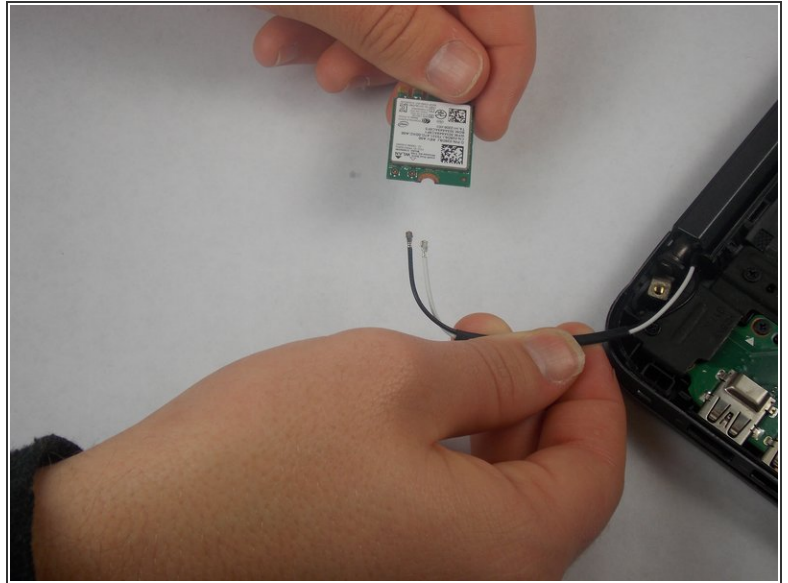
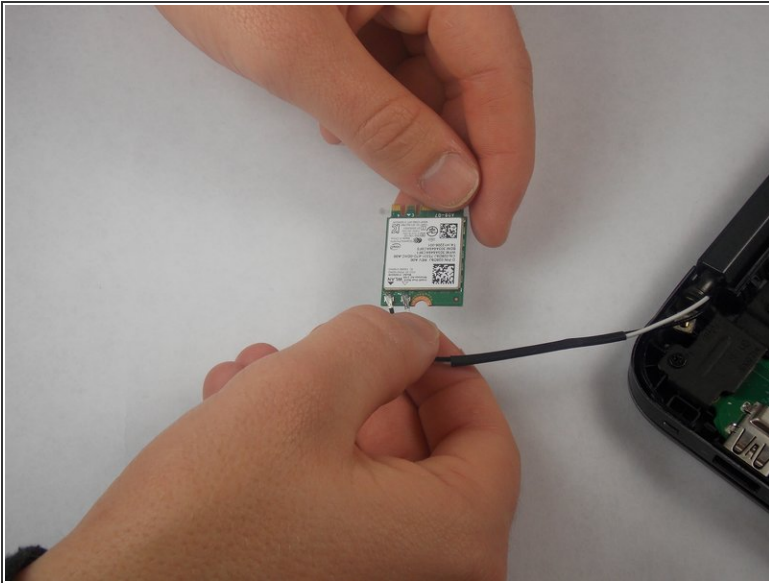
- Remove the 3.0 mm-long Philips #0 screw at the end of the Wifi-Card

Step 4



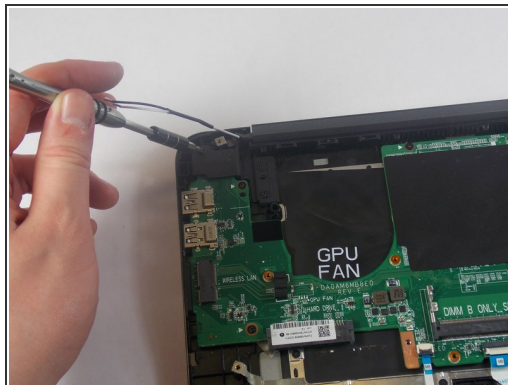
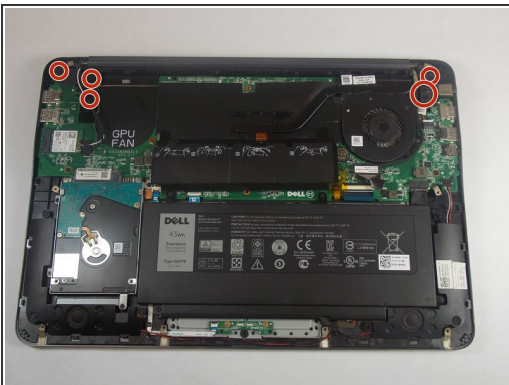
- Remove the Wifi-Card from its socket by pulling away and up from the connector.

Step 5



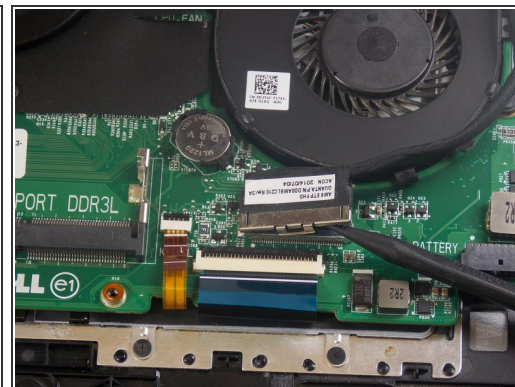
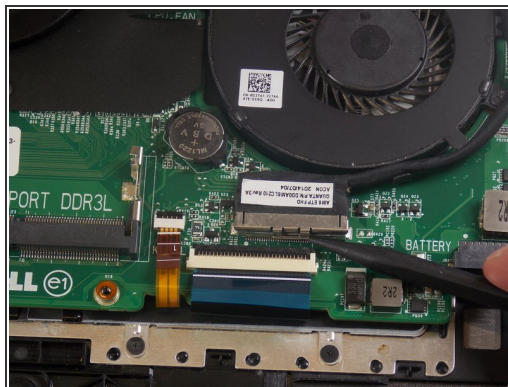
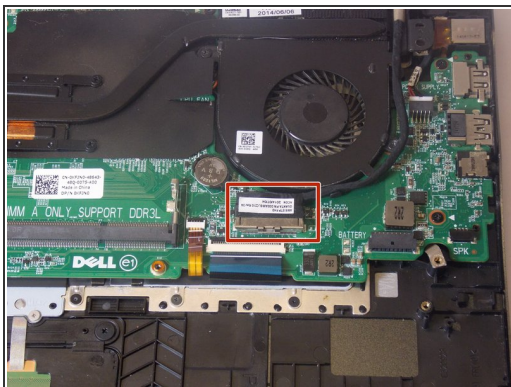
- Disconnect the white and black cables from the Wifi-Card.
- ⓘ Make a note of which wire goes where for reconnecting them to the replacement card.

Step 6 — LCD Assembly



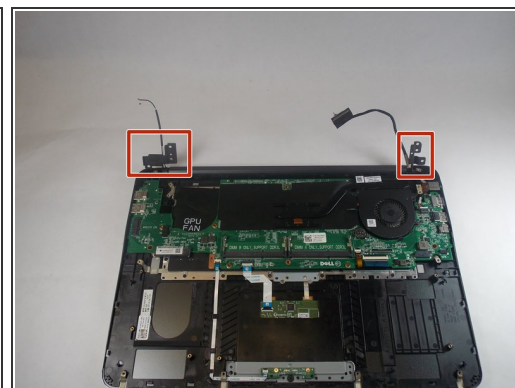
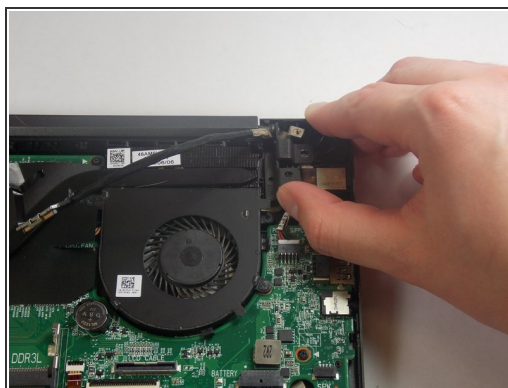
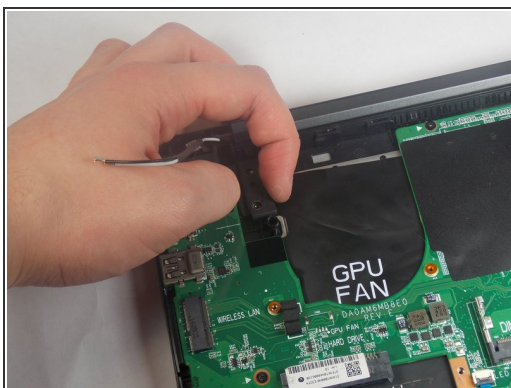
- Remove the six 7.0 mm-long Philips #0 screws that mount the hinges.

Step 7



- Use a spudger to unlatch and unplug the display cable.
- ❗ There will be a notch on the side of the connector.

Step 8



- Raise the left and right hinges.

Step 9



- Remove the LCD display assembly from the laptop.

To reassemble your device, follow these instructions in reverse order.