



Dell Inspiron 15-7547 WiFi Card Replacement

If you're experiencing issues with connecting to the internet it may be because of a faulty WiFi card.

Written By: Claro



INTRODUCTION

The guide shows the process of removing the WiFi card from your Dell Inspiron 15-7547 laptop.



TOOLS:

- [Spudger](#) (1)
 - [Phillips #0 Screwdriver](#) (1)
-

Step 1 — Bottom Cover



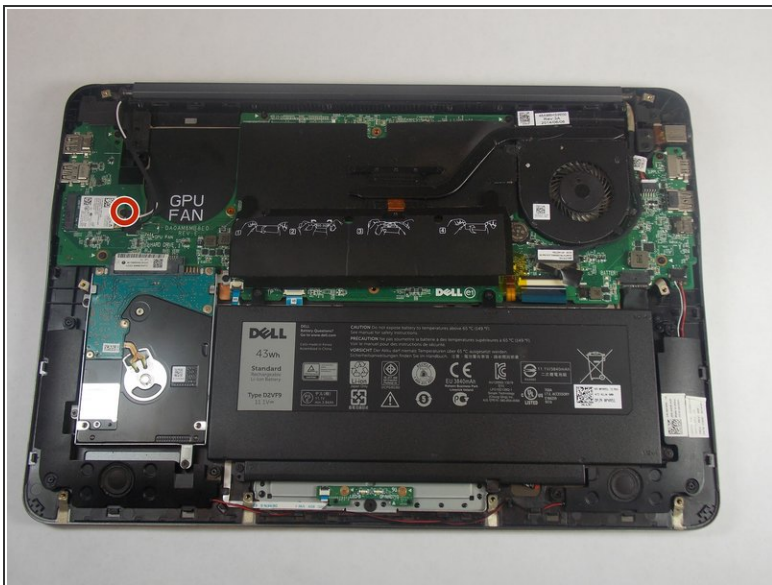
- ❗ Before you begin, be sure to turn off your laptop and unplug it from the outlet.
- Close the display and flip the laptop on its back.
- Loosen the ten 5.0 mm-long Phillips #0 screws.
 - The four screws marked with orange will remain captive to the cover.

Step 2



- Use a spudger to pry up and loosen the back cover.
- Remove the back cover.

Step 3 — WiFi Card



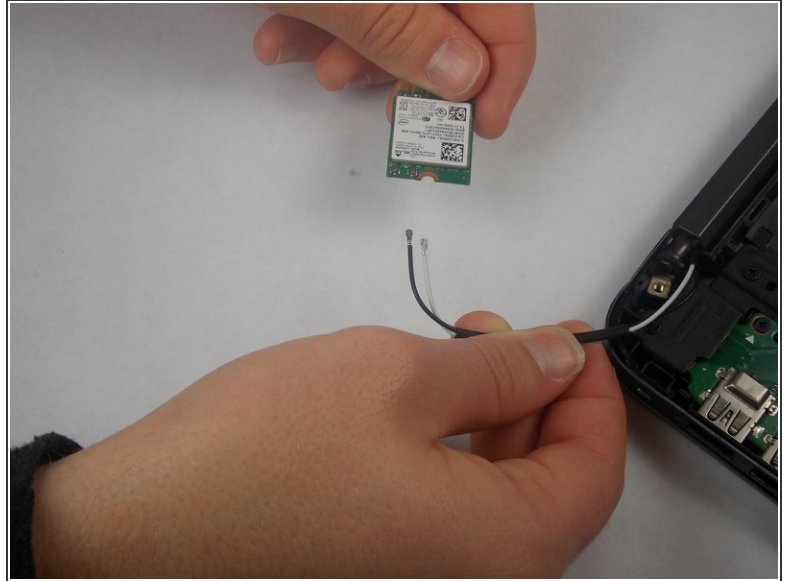
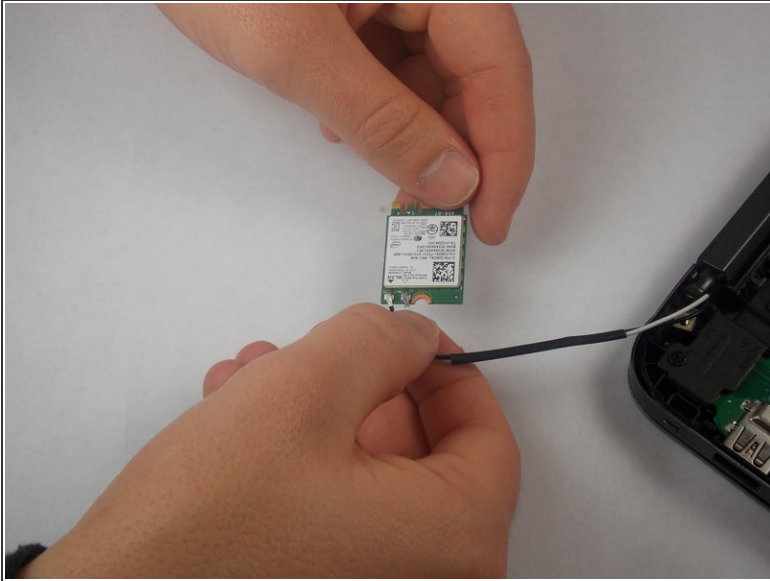
- Remove the 3.0 mm-long Philips #0 screw at the end of the Wifi-Card

Step 4



- Remove the Wifi-Card from its socket by pulling away and up from the connector.

Step 5



- Disconnect the white and black cables from the Wifi-Card.
- ① Make a note of which wire goes where for reconnecting them to the replacement card.

To reassemble your device, follow these instructions in reverse order.