



Garmin Fenix 3 Battery Replacement

If the battery is not holding a charge as long...

Written By: Adam Estabrook



INTRODUCTION

If the battery is not holding a charge as long as it should, or is failing to charge at all, use this guide to replace the battery. You will need a T6 Torx screwdriver, a T5 Torx screwdriver, and a spudger.

TOOLS:

[Tweezers](#) (1)
[T6 Torx Screwdriver](#) (1)
[Spudger](#) (1)
[T5 Torx Screwdriver](#) (1)

PARTS:

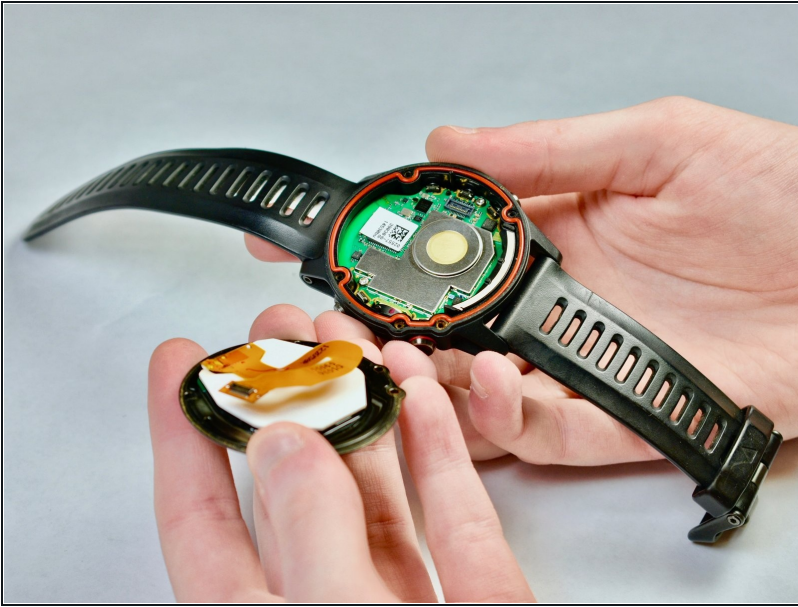
[Garmin Fenix 3 and 3 HR Battery](#) (1)

Step 1 — Display Assembly



- Use a T6 screwdriver to remove the five 1.7 mm screws from the watch face.

Step 2



- Carefully lift the face off the watch base.

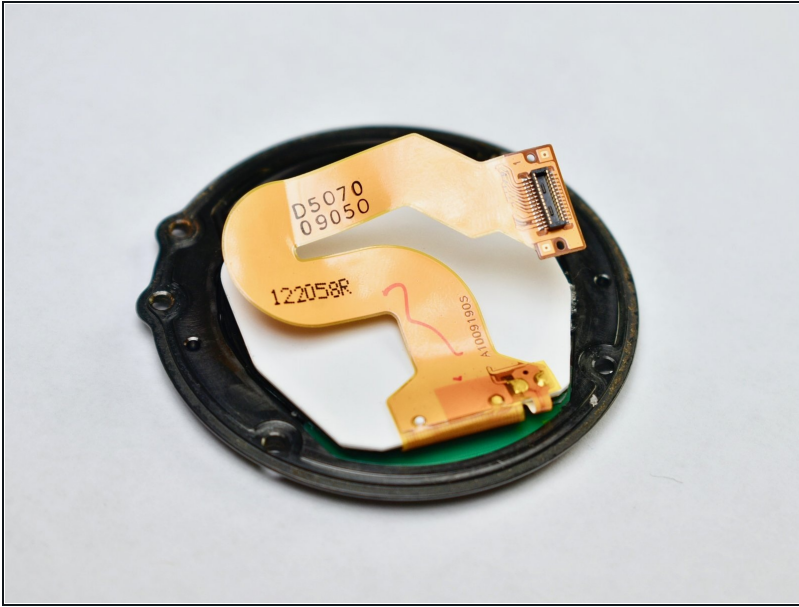
⚠ Do not yank the face. A ribbon connector connects the face and the motherboard, and yanking could result in damage to the motherboard or ribbon.

Step 3



- Use a spudger to lift up and free the screen ribbon cable's press-fit connector from the motherboard.

Step 4



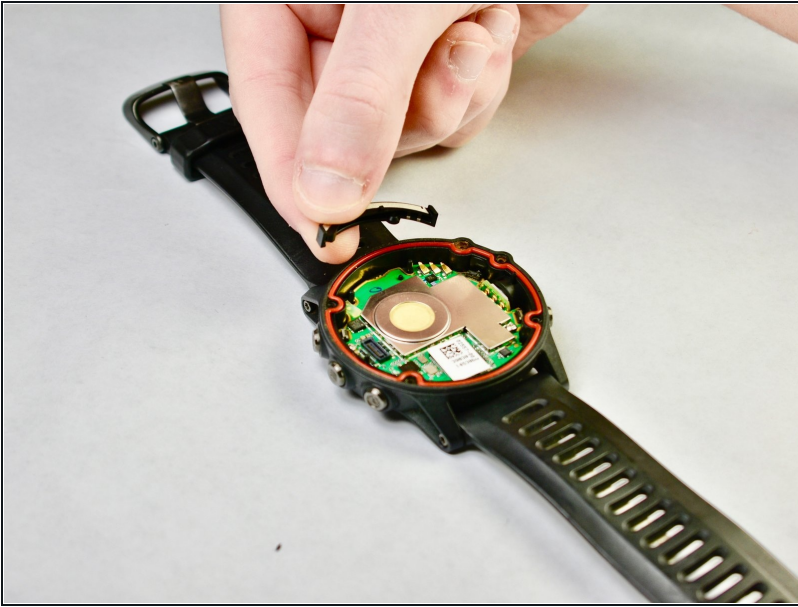
- Set the watch face aside.

Step 5 — GPS Antenna



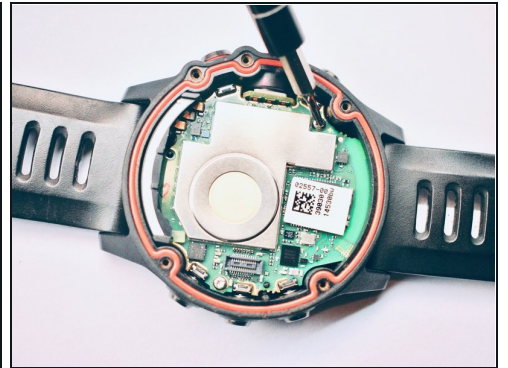
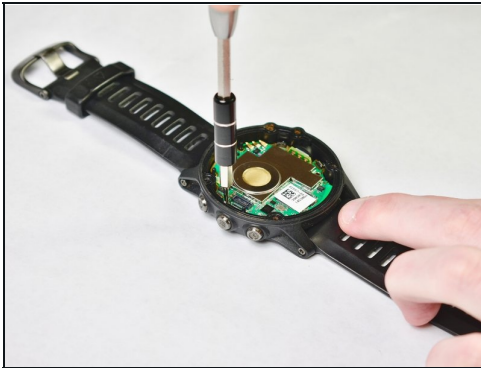
- Locate the antenna, which is located on the motherboard.

Step 6



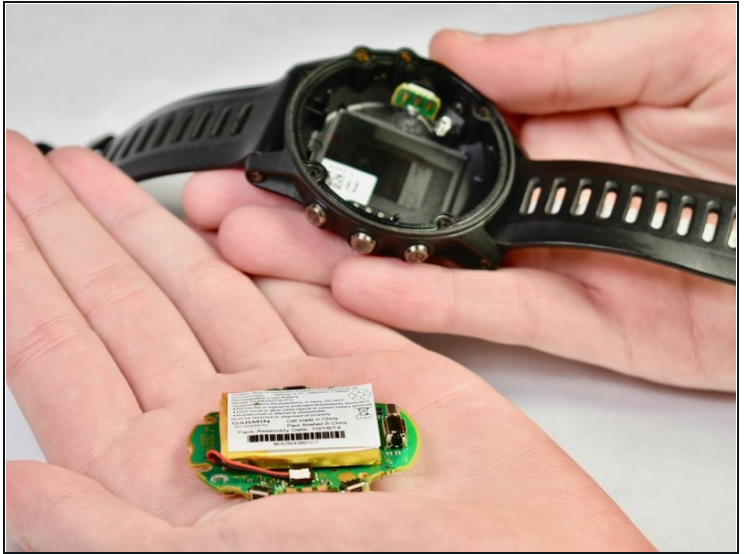
- Carefully remove the antenna, and set it aside.

Step 7 — Battery



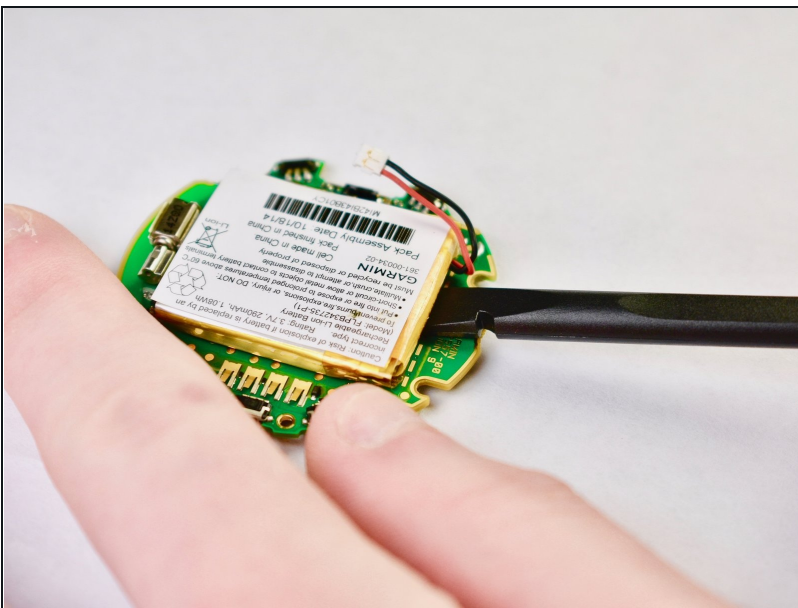
- Use a T5 screwdriver to remove the two silver 1.4 mm screws from the motherboard.
- ① To avoid losing or dropping the screws once they are loose, use [tweezers](#) to extract them.

Step 8



- Lift the watch and turn it over one hand. The motherboard should fall out easily.
- ☑ When reinserting your motherboard, slide it in instead of pressing it. The motherboard must go beneath a lip at the base of the watch body.

Step 9



- Using the spludger, separate the battery from the motherboard, which are both held together with a mild adhesive. Note that the battery connector lifts upward away from the circuit board by simply lifting the wires up should pop the connector.
- ☑ When re-seating the new battery connector make sure the connector is seated home fully or it will not work and the watch will show "100%" when on the charger but will not start.

To reassemble your device, follow these instructions in reverse order.