



# Kitchen extractor fan Motor speed regulator Replacement

Kitchen extractor motor running slow or not running. Kitchen extractor motor only humming

Written By: Jan Carsten Jorgensen



## INTRODUCTION

If your kitchen extractor fan motor is humming or running very slow or not running at all - there is NO guarantee the motor is dead or dying.

It can be a small thing called run-capacitor, which helps these types of motors to run at their best.

This guide is for AEG/Electrolux DD8760

Needless to say - I don't encourage you to do this repair yourself.

If you anyway decide to go on, you are doing this at your own risk.

Pay attention because you will mess with 240 V AC - Lethal if you don't pay attention.



### TOOLS:

- Short-barrel screwdriver with torx 10 bit (1)



### PARTS:


- Run Capacitor ordered from your AEG parts dealer. (1)

**COOKER HOOD CONDENSER - 5MF**

<https://shop.aeg.co.uk/Cooking/Cooker-Hoods/Electronics/Cooker-Hood-Condenser--5MF/p/50290139000>

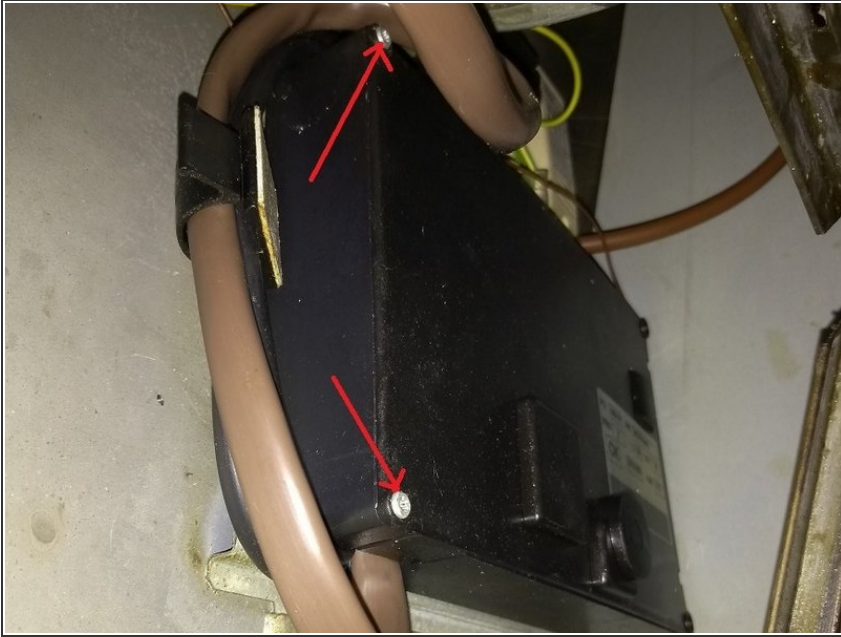
## Step 1 — Open the device



 Unplug the extractor from the mains to avoid electric shock.

- Remove the three lower blinds to expose the filter. Then remove the filter.
- Once the filter is removed, you can see the controller box over to the right.
- You will need the PNC number to be able to order the correct parts. The PNC number is listed on a sticker behind the lower blind.

## Step 2 — Open the controller box



**⚠ MAKE SURE THE DEVICE IS DISCONNECTED FROM THE MAINS POWER**

- Identify the controller box as the black box on the image.
- With a short barrel screwdriver and torx 10 bit, remove the two screws at the arrows.
- The lid is "hinged" in the back with two tabs. Make sure you see how they work. Spend the time here, to save it when putting it together again.





### Step 3 — Replace the run-capacitor



- At the arrow you see the so-called run-capacitor. This is the one you want to replace.
- It is connected to the motor via two leads with connectors. They come off easy.
- ⚠ After you have replaced the capacitor, but it back it's "pocket", keeps hands out of the box.
- Re-connect the device to mains, and try device, just to make sure the motor now spins much faster - Still keep clear from the open device
- ⚠ Disconnect the device from the mains again, before you re-assemble the controller box

## Step 4 — Put it all together again



-  Make sure the capacitor is well connected and is put back in its "pocket" so the lid can come back on again. The lid must NOT be used to press the capacitor down in place.
-  Put the lid back on, starting by making sure the two tabs on the lid slides into their counterparts in the back of the box.
- Secure the screws again
- Insert the filter (Maybe after you have given it a good cleaning)
- Put the blinds back on
- Reconnect the device to the mains power and you are done.

If replacement of the run-capacitor does not improve the motor behavior you may want to replace the motor.