



Joy-Con Battery Replacement

This guide will show you how to replace the battery in your Joy-Con controller.

Written By: Jairo



INTRODUCTION

This guide will show you how to replace the battery in your Joy-Con controller.

There are a few minor differences between the left and right Joy-Cons. These steps apply to **both** Joy-Cons.



TOOLS:

- [Tri-point Y00 Screwdriver](#) (1)
- [iFixit Opening Picks \(Set of 6\)](#) (1)
- [Spudger](#) (1)
- [Magnetic Project Mat](#) (1)
- [Tesa 61395 Tape](#) (1)



PARTS:

- [Nintendo Switch Joy-Con Replacement Battery](#) (1)

Step 1 — Battery



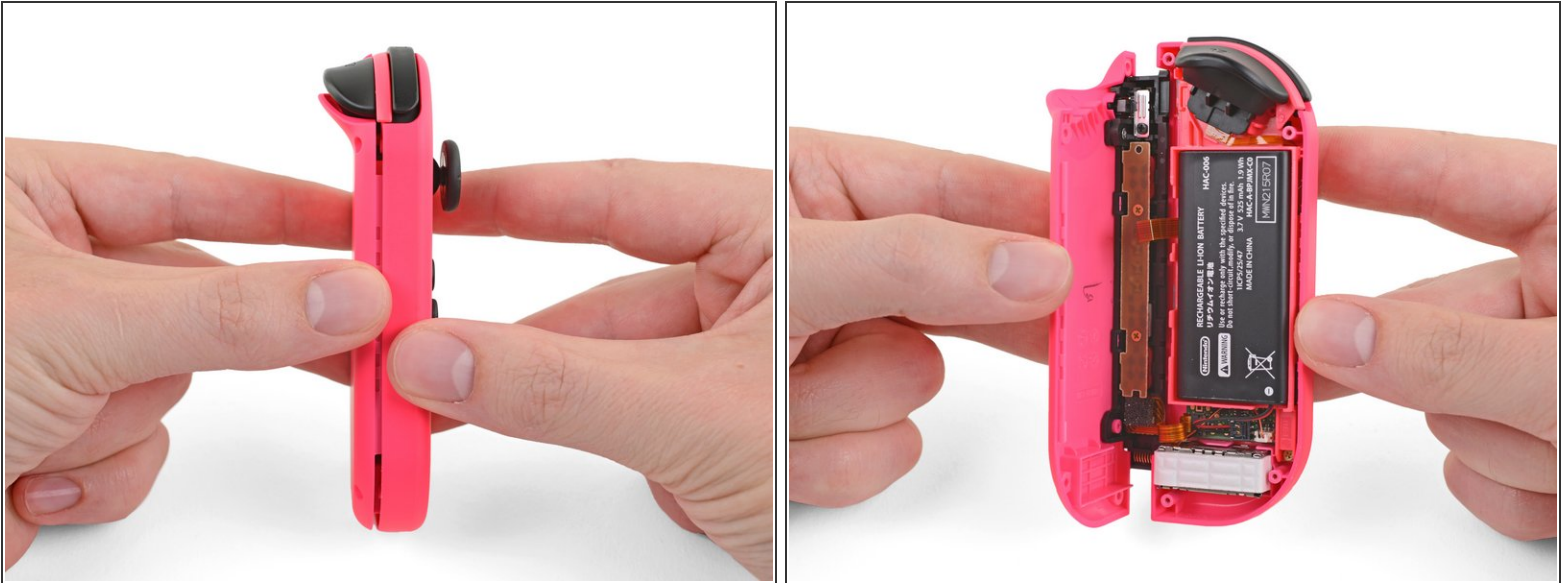
- Remove the four Tri-Point Y00 screws from the back panel of the Joy-Con.

Step 2



- Insert an Opening Pick into the bottom edge of the back panel (opposite the shoulder buttons).
- Slowly slide the flat edge of your Opening Pick up the side of the Joy-Con.
- ⓘ Be careful not to slide the Opening Pick too far inside the Joy-Con. This may damage the inner components. The back panel loosens fairly easily, so not much pressure is needed.

Step 3



- Open the Joy-Con like a book, with the charging rail facing away from you.

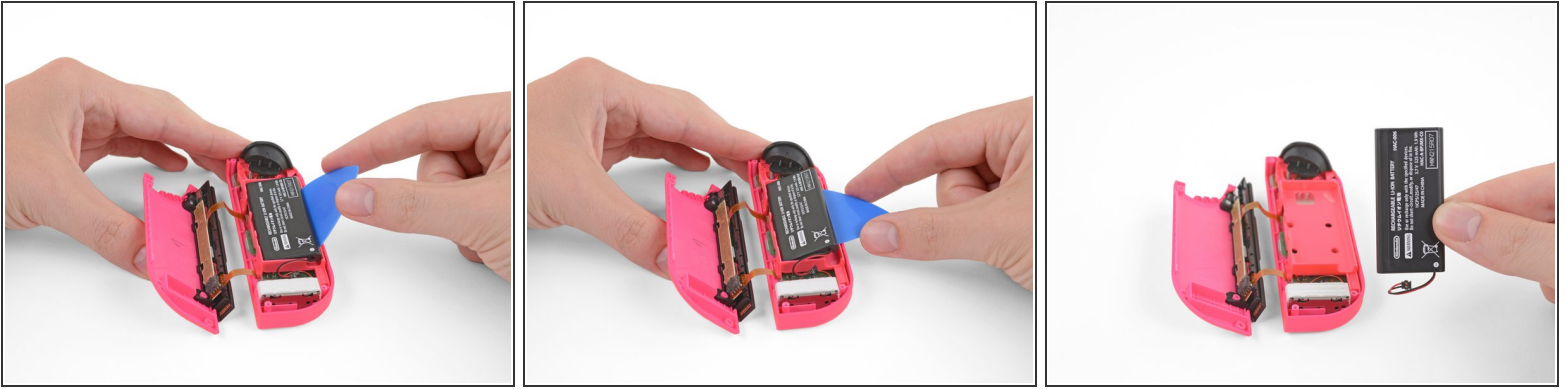
⚠ Don't try to fully remove the back panel yet. There are still two cables connecting the charging rail to the motherboard.

Step 4



- Use a Spudger to gently pry the battery connector from its socket on the motherboard. This will keep the Joy-Con from powering on during the repair.
- i** Use caution while working around the vibration motor cable that runs close to the battery connector. If you are replacing the battery in a right Joy-Con, you will also need to work around an antenna cable during this step.

Step 5



- Insert an Opening Pick between the battery and the Joy-Con housing.
- Gently pry out the battery, which is lightly taped in place.
- ☑ To install a new battery, press it into place and reconnect it. If the double-sided tape holding the battery in place came out with the battery, replace it before you install the new battery.

To reassemble your device, follow these instructions in reverse order.