



# Samsung Galaxy J6 Teardown

Teardown of the Galaxy J6, completed in August 2018.

Written By: Tobias Isakeit



## INTRODUCTION

Today we turn our tools on a rather inconspicuous phone—one of the newest members in Samsung's mid-tier Galaxy J series, the J6. It debuted alongside the J4 and J8, so what makes it special? Well for one thing, it's getting the teardown treatment.

Its predecessors, the J3 and J5, seem to be particularly popular amongst our Latin American and Spanish-speaking fixer friends. Since they asked with a polite *por favor*, we are only too happy to answer. Let's give them what they want, and peek inside the J6.

To keep up-to-date on all of our teardown exploits, follow us on [Instagram](#), [Twitter](#), and [Facebook](#).



### TOOLS:

- [iOpener Kit](#) (1)
  - [iSlack](#) (1)
  - [Mako Driver Kit - 64 Precision Bits](#) (1)
-

## Step 1 — Samsung Galaxy J6 Teardown



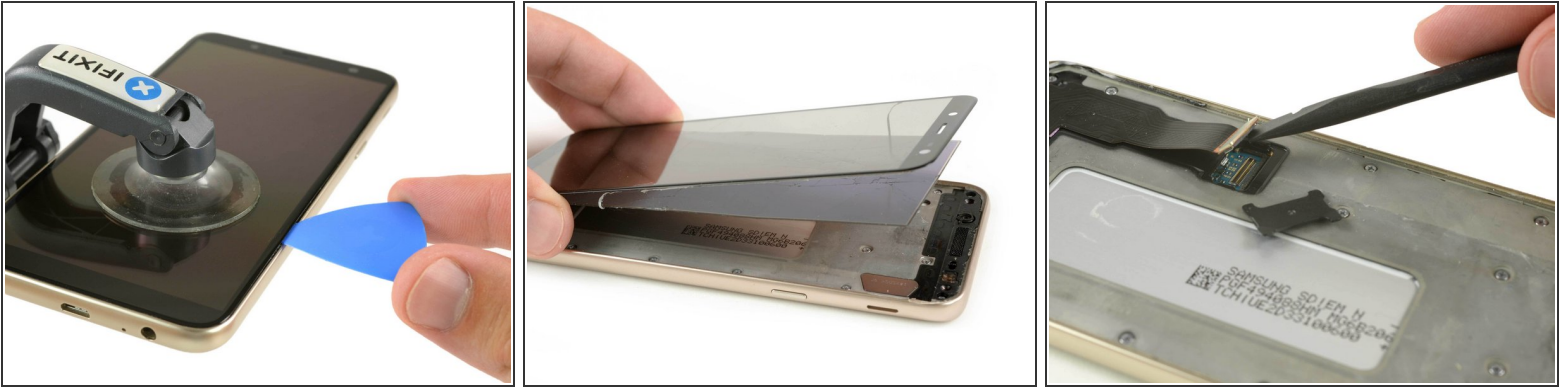
- With annual updates for the J3, J5 and J7 phones, the J6 has its debut this year.
- A short spec check shows:
  - 5.6" Super AMOLED display with a resolution of 720 × 1480
  - Octa-core, 1.6 GHz Cortex-A53 Exynos 7870 processor, paired with 3 GB of RAM
  - Built-in 32 GB storage (with an additional 256 GB available via microSD card expansion)
  - 13 MP primary rear-facing camera, plus an 8 MP selfie cam
  - 149.3 × 70.2 × 8.2 mm in size, and 154 g on the scale
  - Android 8.0

## Step 2



- While scanning the outside for screws, we note the good ol' Micro-USB port. And a headphone jack next to it.
- Our teardown specimen of the J6 is the Duos version, with an additional SIM and SD card slot on the side.

## Step 3



- With no exterior screws to guide the way, we attack the back cover as a possible point of entry—but after some unsuccessful heating and prying, we give up and try our luck on the display.
- After some iOpener and [iSclack](#) action, the touch panel seems to separate pretty cleanly. Is this a repairable, non-bonded display like back in the old days?
- Sadly, no—it seems we were foiled by some extra-strong adhesive *under* the sAMOLED panel, which held fast while the touch panel glue gave way. End result: busted display.
- We unplug the protected connector and remove the newly unfused display assembly to continue our journey.

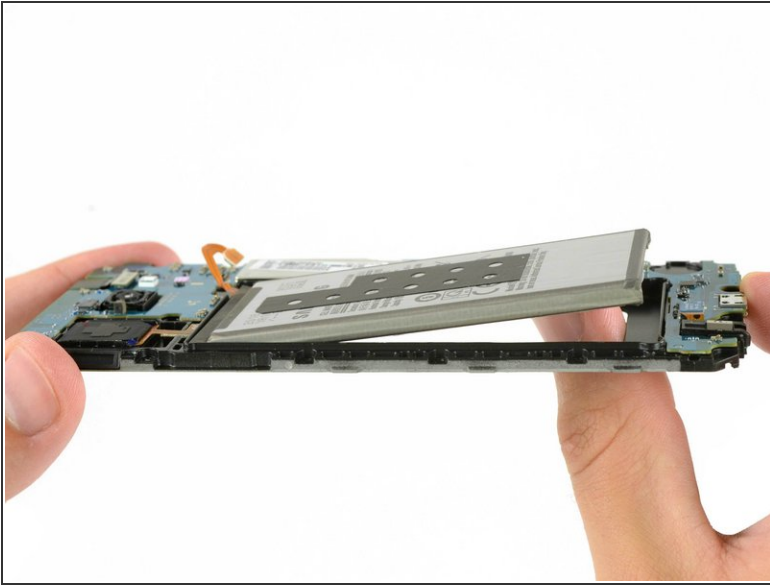
## Step 4



- It seems those screws we hoped to see on the outside were already used up on the midframe.
- So we bring out our [Mako Driver Kit](#) to remove a bunch of Phillips screws ...
- ... and finally pop out the midframe.

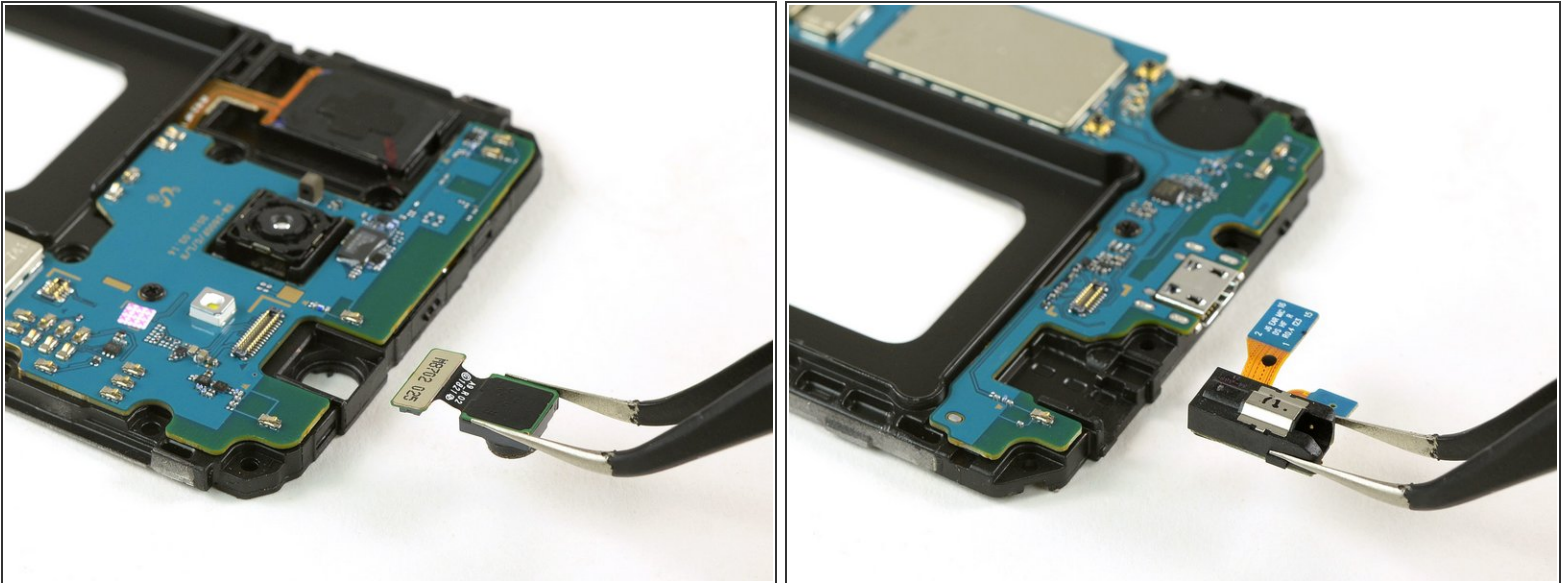


## Step 5



- On the other side of the midframe, we finally find the battery—glued in place.
- After a little heat and some gentle convincing, we can push out the power pack for inspection.
- Coming in at 11.55 Wh (3,000 mAh at 3.85 V), this is on par with last year's J5—and a bit weaker than the 2017 J7 Pro (3,600 mAh).

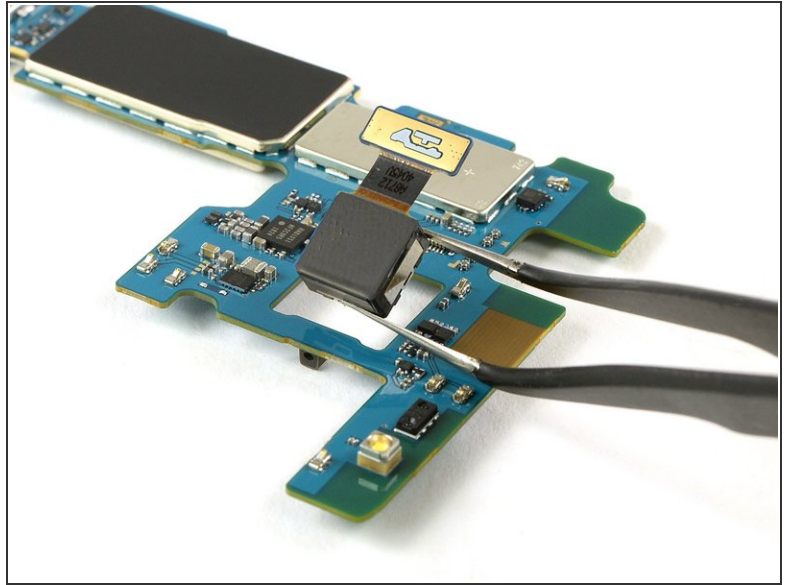
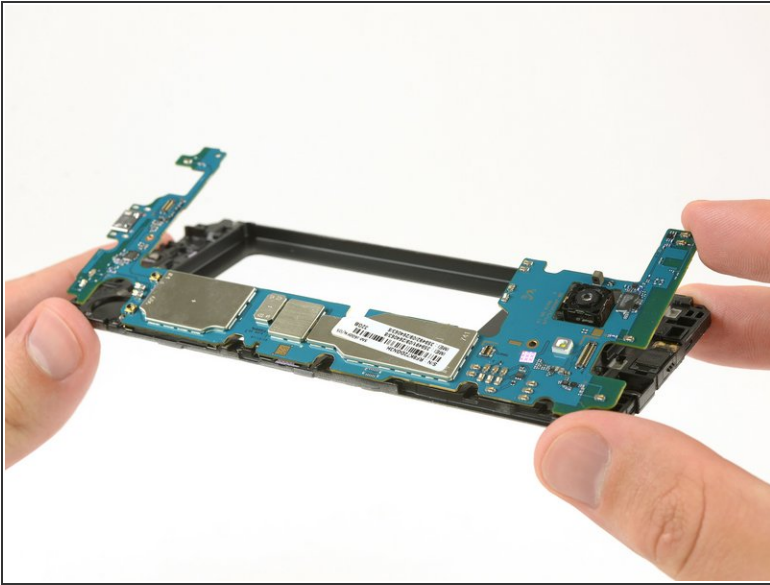
## Step 6



- Before we take a look at the motherboard, we remove the 8 MP front-facing camera at the top, and the 3.5 mm headphone jack at the bottom.
- Much to our dismay, the USB charging port is soldered onto the motherboard—nothing to take out (or easily repair) here.
- ⓘ This unfortunately reduces the *joy* that the "J" in J6 [stands for](#). But we're not done yet.

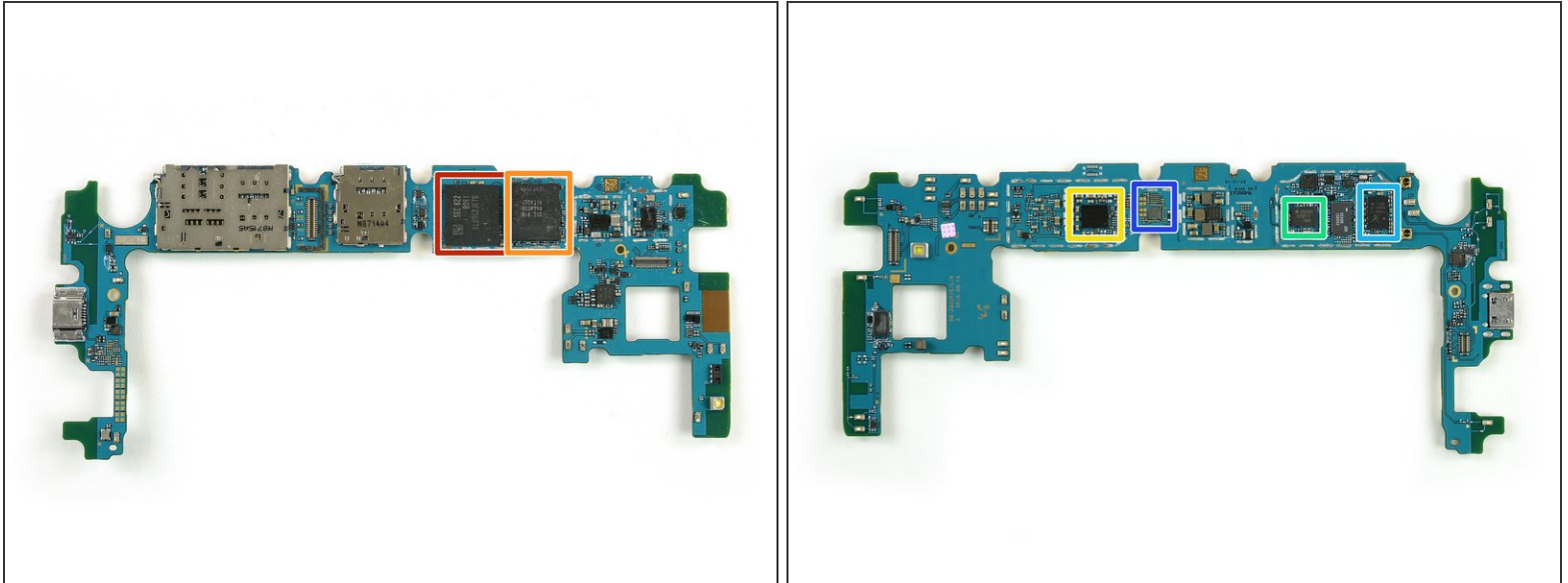


## Step 7



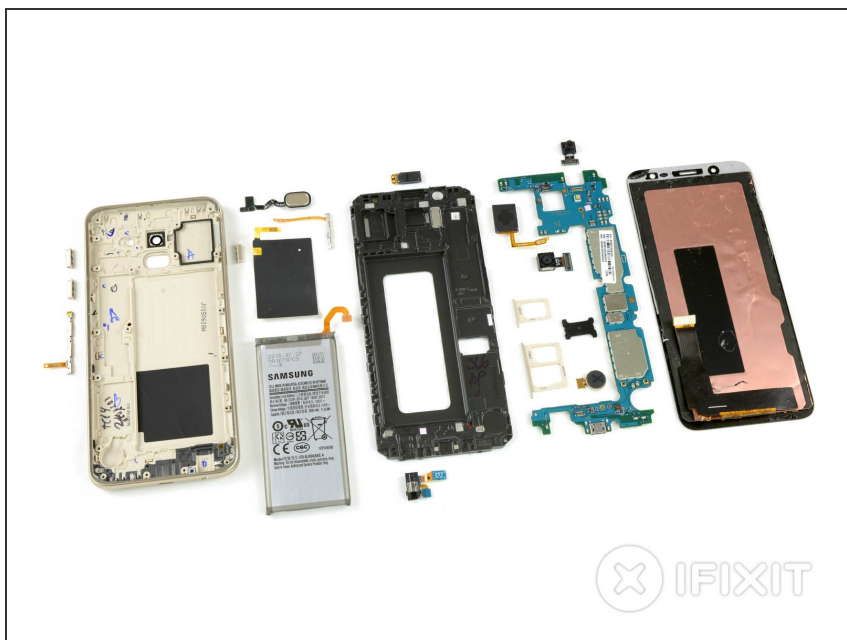
- Without further ado, we take out the motherboard ...
- ... and remove the 13 MP rear camera, with its  $f/1.9$  aperture.

## Step 8



- On the front of the motherboard, we find:
    - Samsung [KLMBG2JETD-B041](#) 32 GB NAND Flash Memory
    - Samsung K4EHE304EC-AGCF ? 3 GB Memory layered over the Exynos 7870 chip
  - And on the back, we have:
    - Samsung Shannon 515 power management IC
    - Samsung Shannon 925 RF Transceiver
    - Skyworks Multiband Power Amplifier [SKY77656-11](#)
- ✦ There are also two empty areas. Maybe the same board is used for different versions of the J6 that require a different complement of chips?

## Step 9



- This completes our abbreviated teardown, with all components lined up for inspection. We'd hoped for a bit more modularity in this mid-range phone—but let's tally up the points and see how the J6 performed.

## Step 10 — Final Thoughts

### REPAIRABILITY SCORE:



- The Galaxy J6 earns a **4 out of 10** on our repairability scale (10 is the easiest to repair):
  - The only screws used are standard Phillips screws (granted, there are almost too many).
  - Display repair is prioritized, since it is the first part out—but at the cost of probably damaging it, making repairs to other components risky.
  - The battery is buried beneath the motherboard and adhered to the midframe, hindering its replacement.
  - The high-wear USB port is soldered to the motherboard, requiring a high level of skills and equipment for this all-too-common repair.