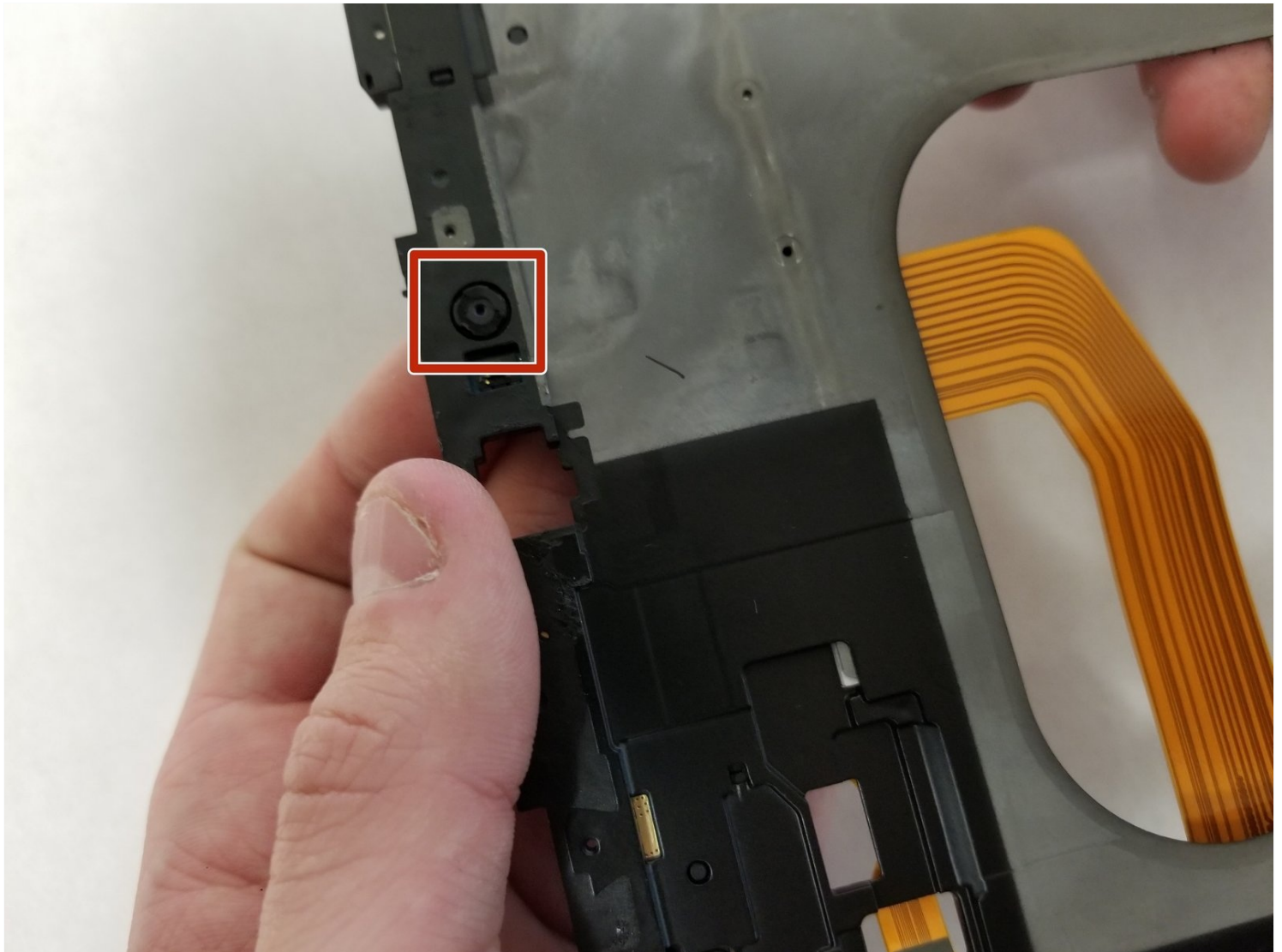




Samsung Galaxy Tab S3 Front Facing Camera Replacement

This guide will help you replace the front...

Written By: Justin Ogihara



INTRODUCTION

This guide will help you replace the front facing camera in your device. You're going to need to open up the device first with a heating mechanism, and you're going to need a couple of other tools to complete this guide.

TOOLS:

[Microwave](#) (1)
[iOpener](#) (1)
[iFixit Opening Tool](#) (1)
[Spudger](#) (1)
[Plastic Cards](#) (1)
[Phillips #000 Screwdriver](#) (1)


PARTS:

[Galaxy Tab S3 9.7 Front Camera](#) (1)

Step 1 — Display



- To soften the adhesive holding the tablet together, heat up the edges of the glass panel using a heated **iOpener** on the edge of the device. Alternatively you can use a heat gun to loosen the adhesive.
- Leave the **iOpener** on edge for two minutes.

 Be careful not to burn yourself while handling the hot **iOpener**. For more information on the **iOpener**, use the [iOpener Instructions Guide](#).

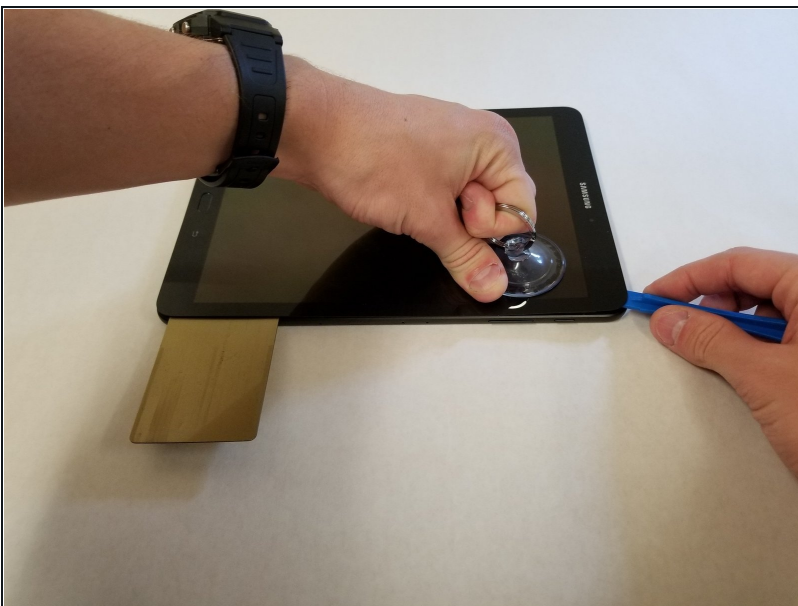
Step 2



- Place a **suction cup** near edge that you heated up with the **iOpener**.
- Press down on the **suction cup** to create a seal, and pull up with force to create a separation between the display and the midframe.
- Use an **opening tool** to split apart the glass panel from the midframe.

⚠ Be careful to not break the glass when prying from the frame.

Step 3



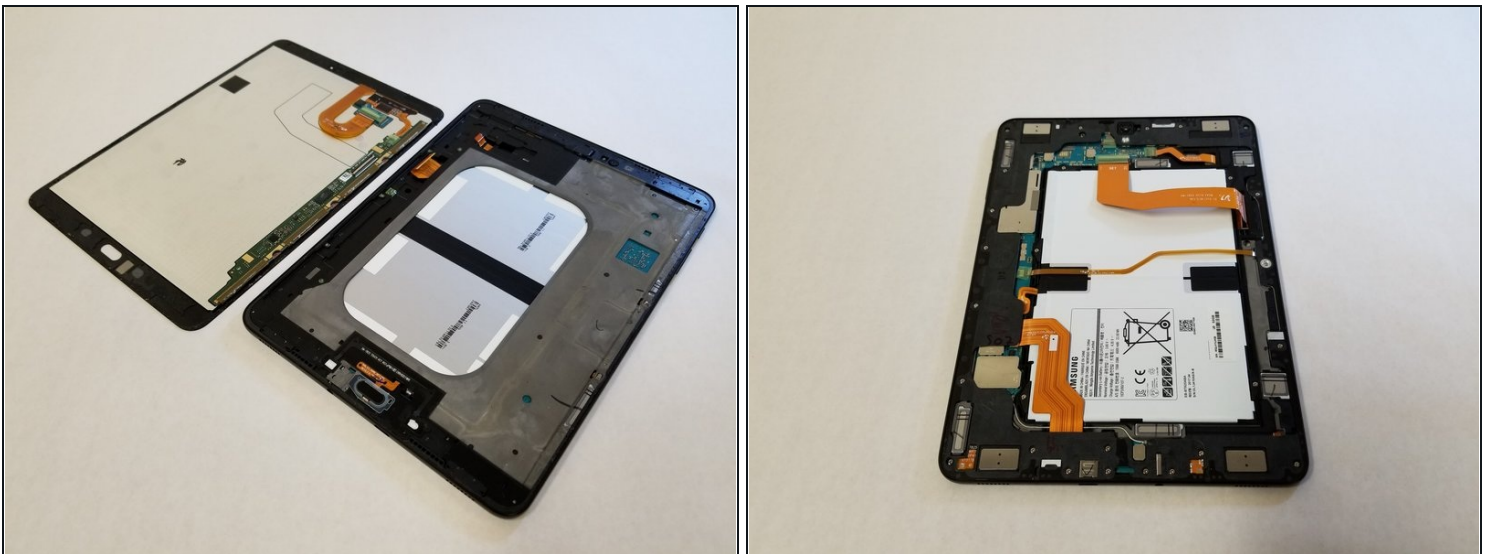
- As you continue along the edge using the **opening tool**, use a **plastic card** to keep the glass separate from the midframe.
- ① You can also use multiple **opening picks** instead of a **plastic card**.

Step 4



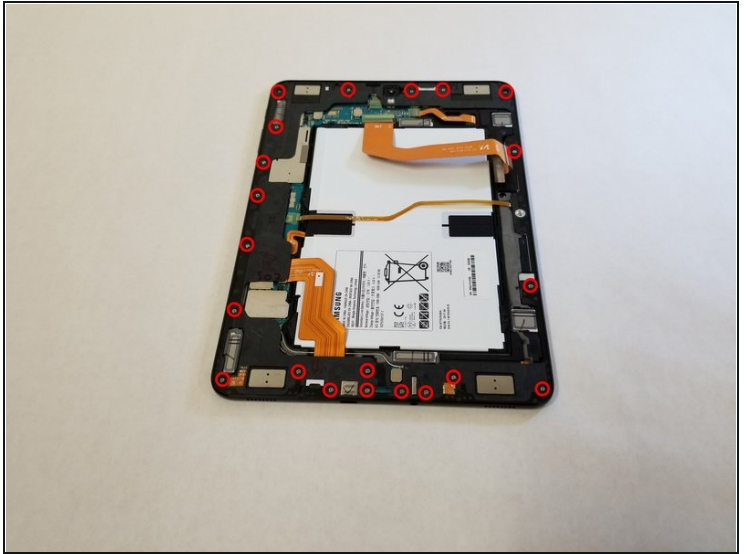
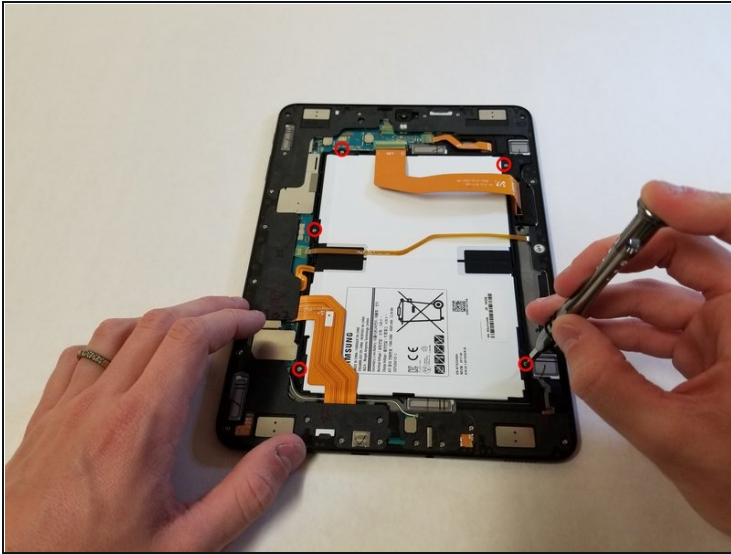
- Pull off the glass panel using the **suction cup**.
 - ① As you remove the glass panel, be careful not to tear the ribbon connecting the motherboard to the display.
- Carefully disconnect the **ribbon cable** connecting the display assembly to the motherboard. You can disconnect this ribbon from either end.

Step 5 — Rear glass panel



- Repeat steps 3 through 7 to remove the rear glass panel on the opposite side of the device.

Step 6 — Battery



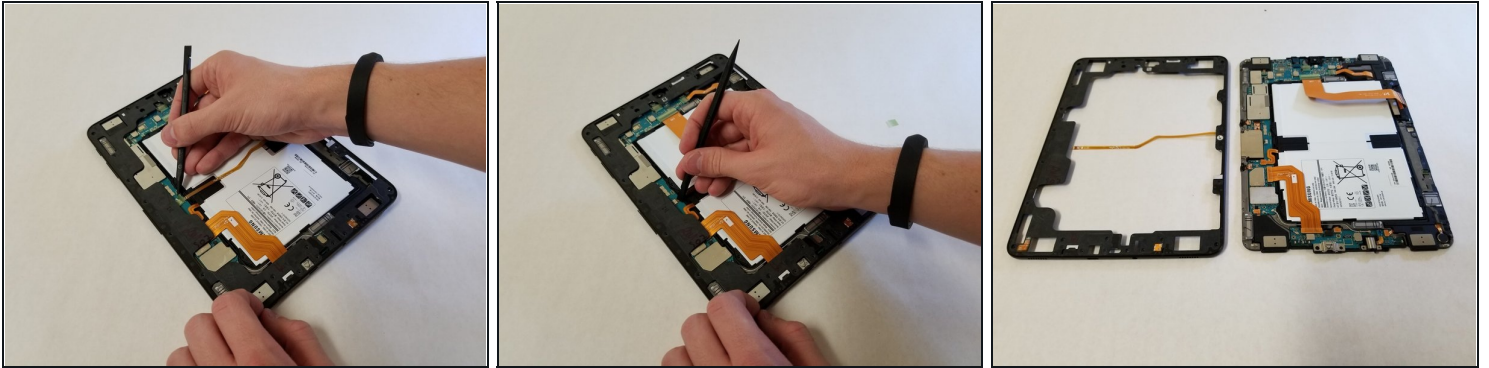
- Use a Phillips #000 screwdriver to unscrew the five screws securing the battery, and the twenty-two screws surrounding the midframe.

Step 7



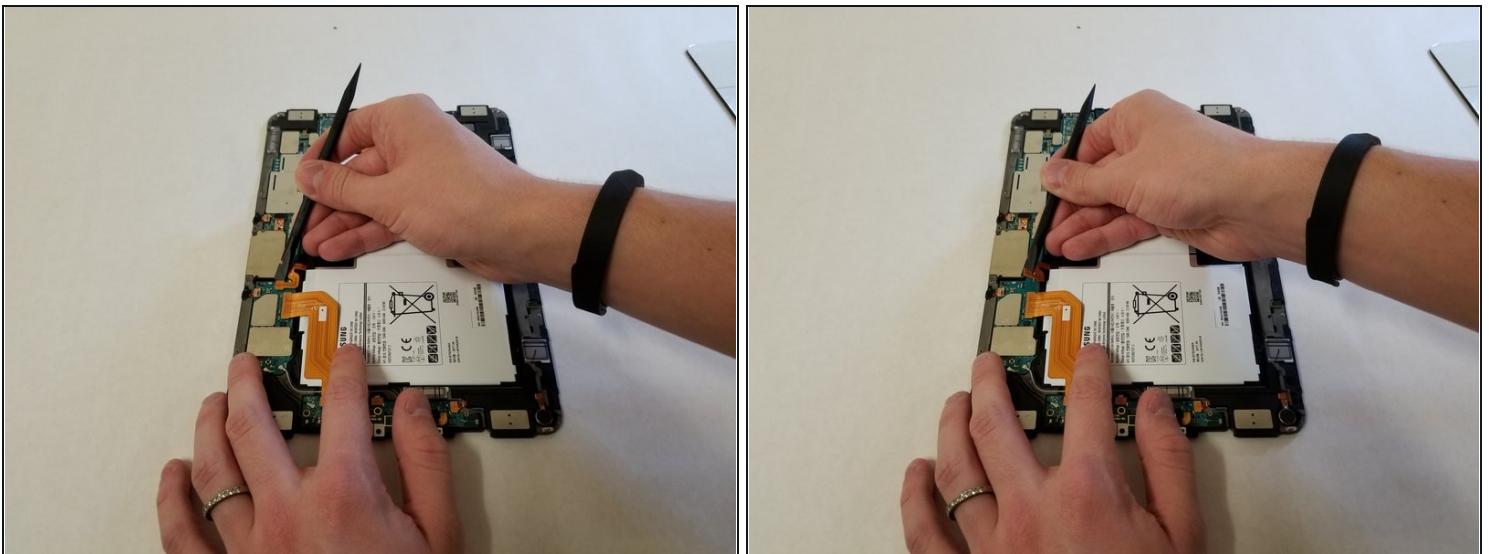
- The midframe should snap off from the device's motherboard.

Step 8



- Locate the ribbon running from the midframe and disconnect it from the motherboard with the flat end of a **spudger**.

Step 9



- Use the flat end of the **spudger** to pop off the connector between the battery and the motherboard.

Step 10



- Flip the midframe over and pop the battery out, making sure to slide it out from underneath the ribbon cables.

Step 11



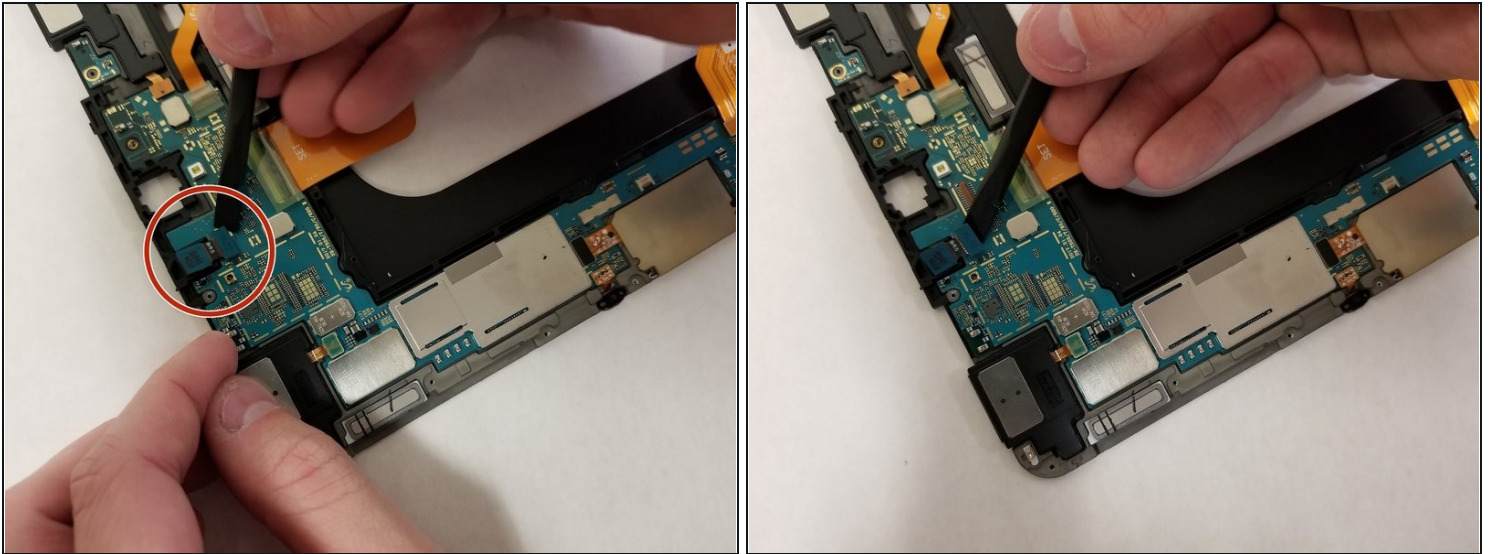
- The battery should now be removed and detached from the device.

Step 12 — Front Facing Camera



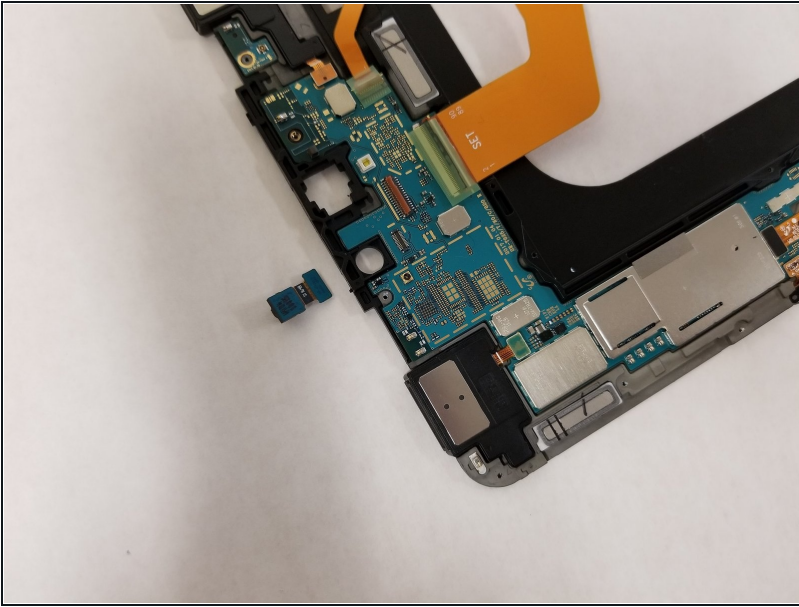
- Using a nylon **spudger**, carefully push the camera out of its framing.
- ① Unlike the rear facing camera, you will be pushing this camera out from the front. Try to push on the side of the camera so as to not damage the lens with the pointy end of the **spudger**.

Step 13



- Carefully pop the front facing camera off from the motherboard with the flat end of the **spudger**.

Step 14



- Remove the front facing camera from the device.

To reassemble your device, follow these instructions in reverse order.