



# Huawei Mate 10 Pro Screen and Digitizer Replacement

Use this guide to replace the screen and...

Written By: Dominik Schnabelrauch



# INTRODUCTION

Use this guide to replace the screen and digitizer in your Huawei Mate 10 Pro.

Opening the Mate 10 Pro will damage the waterproof sealing on the device. If you do not replace the adhesive seals, your phone will **function normally**, but will **lose its water-protection**.

Before disassembling your phone, **discharge the battery below 25%**. The battery can catch fire and/or explode if accidentally punctured, but the chances of that happening are much lower if discharged.



## TOOLS:

[Halberd Spudger](#) (1)  
[Spudger](#) (1)  
[iFixit Opening Picks \(Set of 6\)](#) (1)  
[Suction Handle](#) (1)  
[Phillips #00 Screwdriver](#) (1)  
[Tweezers](#) (1)  
[SIM Card Eject Tool](#) (1)  
[iOpener](#) (1)  
[Phillips #000 Screwdriver](#) (1)  
[Plastic Cards](#) (1)



## PARTS:

[Huawei Mate 10 Pro Screen](#) (1)

---

## Step 1 — Back Cover



- Switch off your phone.
- [Prepare an iOpener](#) and apply it to the back of the phone for about two minutes to loosen the adhesive beneath the back cover.

## Step 2



- Lift up the back cover with a suction cup until you can insert the flat end of a halberd spudger.
- Use the halberd spudger to cut the adhesive beneath the back cover on all sides of the phone.
  - ① Use opening picks to avoid the adhesive from sticking to the back cover again while cutting the adhesive on all sides.

### Step 3



⚠ Don't remove the back cover all the way, yet. The fingerprint sensor cable is still connected to motherboard.

- Flip the back cover over to the side.
- Remove the Phillips #00 screw which holds down the metal shield, sitting on top of the connection of the fingerprint sensor cable.

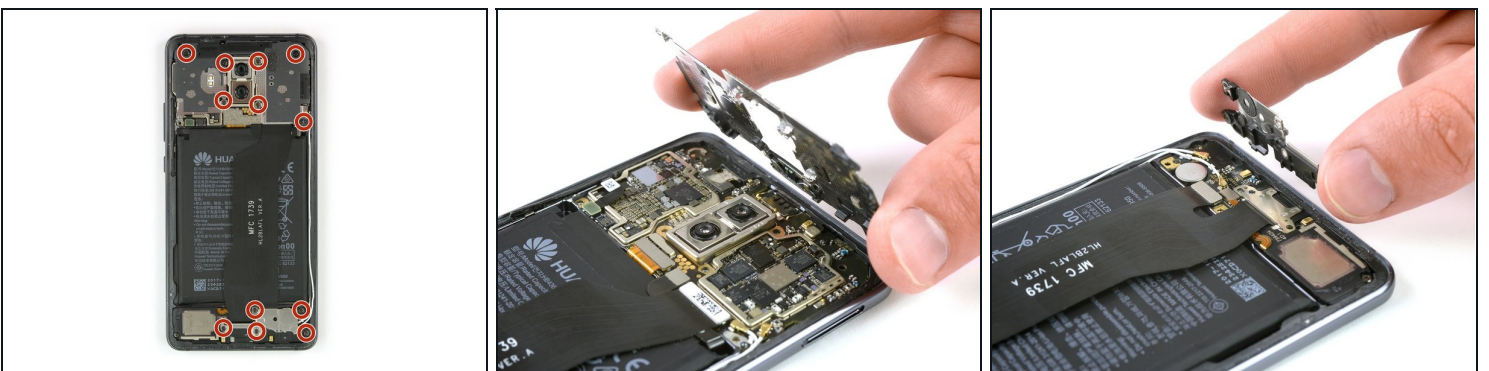


## Step 4



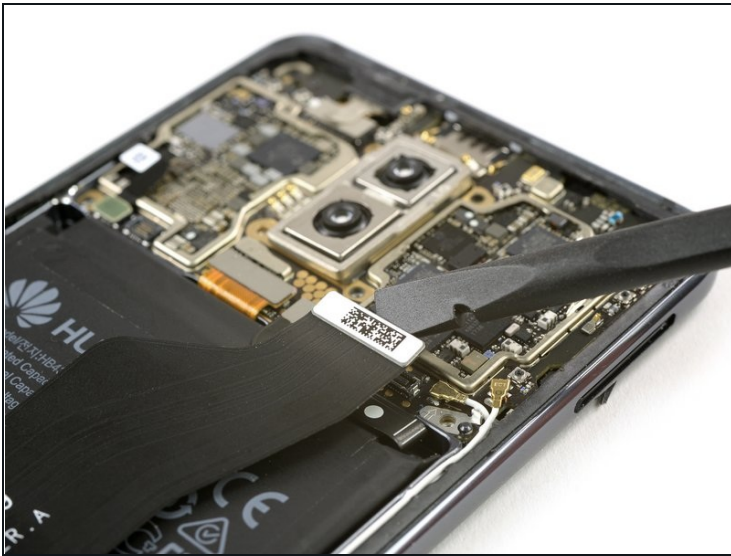
- Use a pair [tweezers](#) to remove the metal shield covering the connector of the fingerprint sensor.
- Disconnect the fingerprint sensor cable with a spudger.
- ☑ When reassembling your phone apply new adhesive where it is necessary.

## Step 5 — Shields



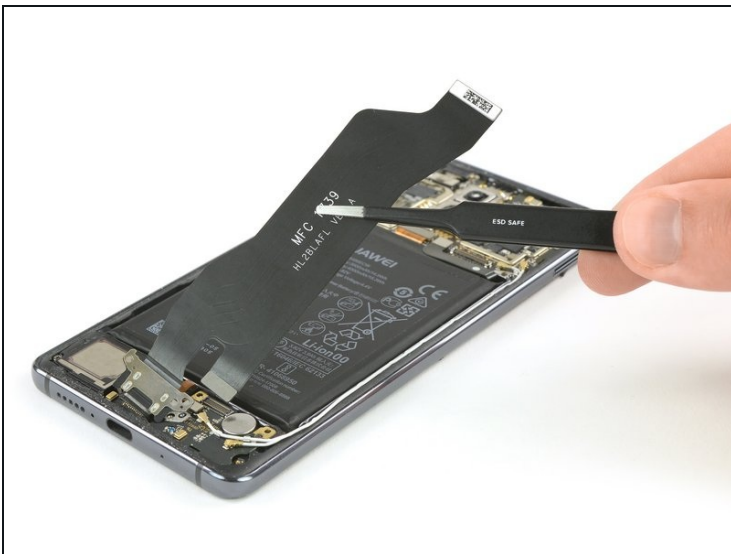
- Remove the twelve Phillips #00 screws.
- Carefully remove the shields on top of the motherboard and the charging board.
  - ① In case the shields do not pop out easily on their own after you removed the Phillips screws, you can use the pointed end of a spudger to pry them out.

## Step 6 — Charging Port



- Use a spudger to disconnect the charging port flex cable from the motherboard and from the daughterboard.

## Step 7



- Use a pair of [tweezers](#) to carefully remove the charging port including its flex cable.
  - ① The charging port sits tightly in its recess. In case you have trouble removing it, use the flat end of a halberd spudger to pry it out.

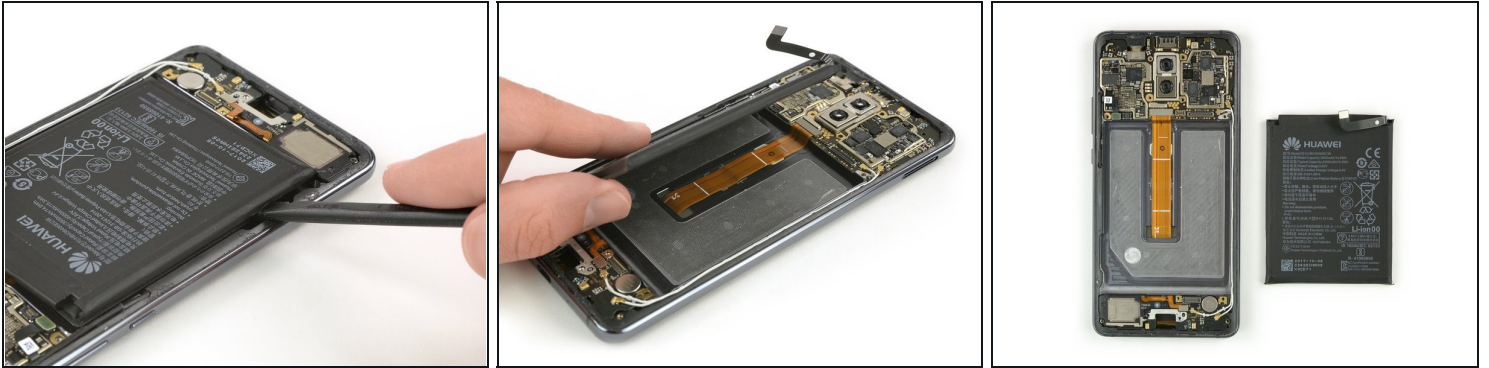
## Step 8 — Battery



- Use a spudger to disconnect the battery flex cable.
- [Apply an iOpener](#) on the screen for at least one minute to loosen the adhesive beneath the battery.



## Step 9

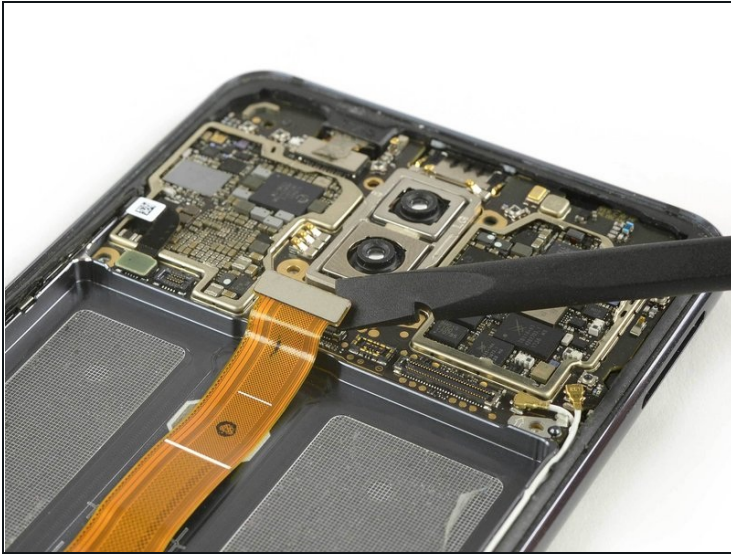


⚠ The display flex cable runs underneath the battery. So be careful not to damage it when loosening the adhesive. Also take care not to bend or puncture the battery at any time.

- Use a spudger to carefully pry up the battery and slide along the side to separate the adhesive.
  - Remove the battery.
- ☑ When reassembling your phone replace the old adhesive with double-sided tape or [pre-cut adhesive](#).



## Step 10 — Screen and Digitizer



- Use a spudger to disconnect the display flex cable.
  - [Prepare an iOpener](#) and apply it to the display for at least two minutes to loosen the adhesive underneath. Especially take care of the upper and lower part.
  - If your display is broken or cracked protect your eyes from glass shreds apply some clear tape onto the screen to also get a better grip to open the phone.
- ⓘ The display of the Huawei Mate 10 Pro is extremely sticky and you might need to repeat this process during the display removal.

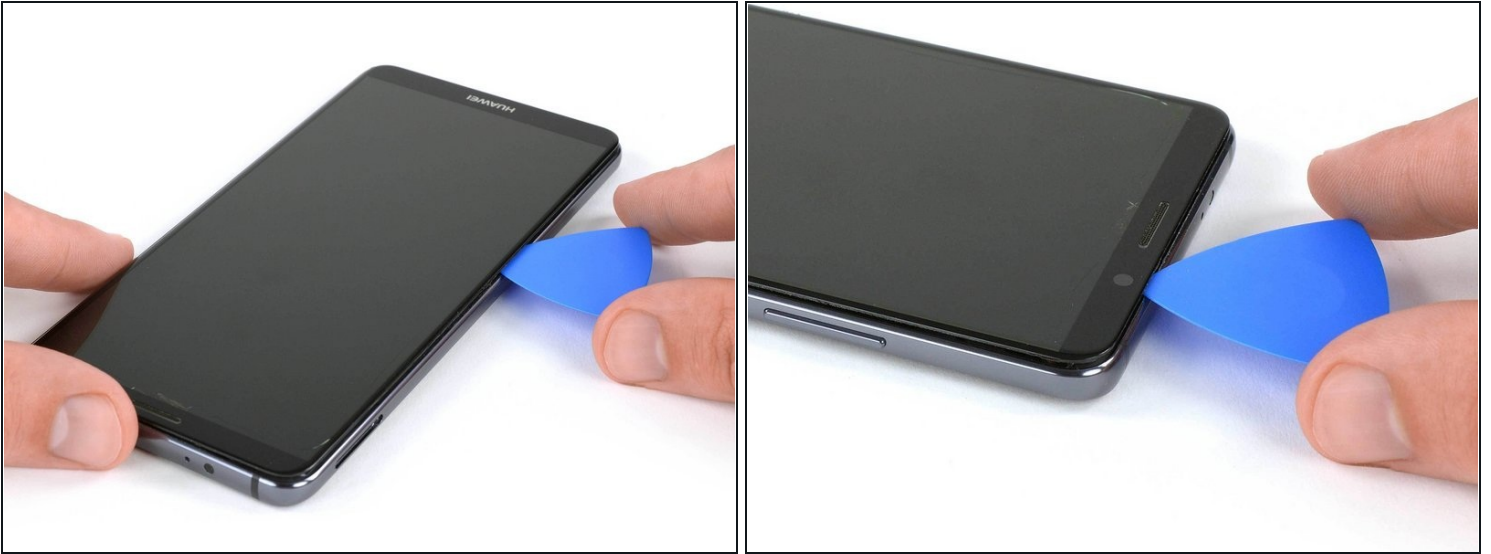
## Step 11



**⚠ If your display isn't already broken, it is likely to break during this process. You might want to protect your hands and eyes from glass shards.**

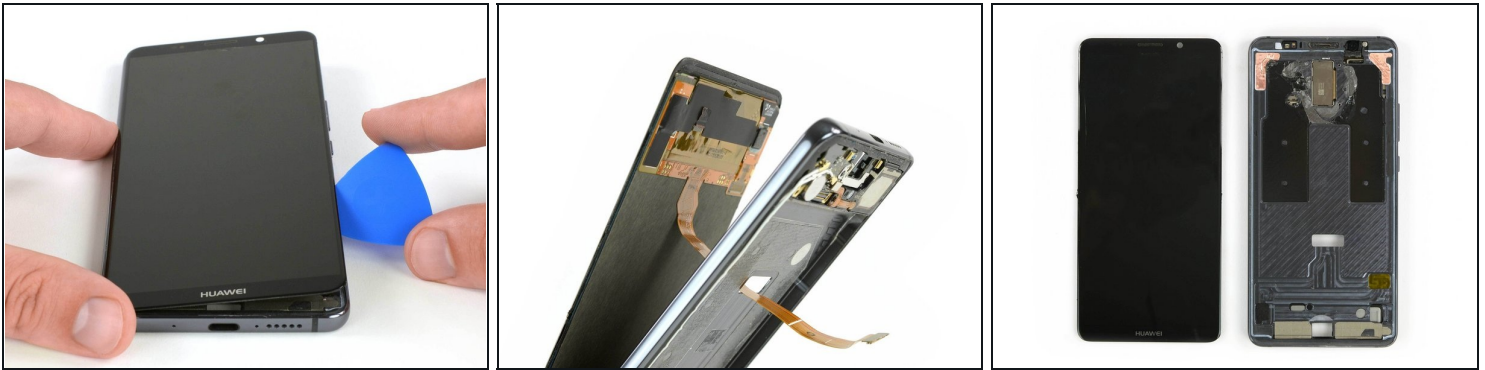
- Push a spudger against the back of the display through the cutout in the midframe, where the charging port was located, to create a gap between the display and the frame.
- ① The adhesive is really sticky so this can be a lengthy and difficult procedure. Take care not to damage any other components while doing so.
- Insert the tip of an opening pick into the gap you just created.

## Step 12



- Use the opening pick to cut the adhesive around all sides of the Huawei Mate 10 pro.  
⚠ Be careful at the top around the front camera. Only insert the very tip of the opening pick to avoid damaging the camera.
- ① In case you're having trouble to cut the adhesive, you can [re-use the iOpener](#) to loosen the adhesive again.

## Step 13



- After cutting the adhesive on all sides of the phone, flip the opening pick to lift up the display.
  - It's possible that the display cable still sticks a little to the mid frame. In this case loosen it carefully and thread it through the gap in the frame.
  - Remove the display.
- ☒ Remove any remaining adhesive from the phone, and clean the glued areas with >90% isopropyl alcohol and a lint-free cloth.

**If possible**, turn on your phone and **test your repair** before installing new adhesive and resealing the phone.

If the frame is bent, or if any glue or glass remnants are left behind, the new display will not mount correctly and may be damaged. If necessary, replace the frame.

The best way to secure the new screen is with a sheet of custom-cut double-sided tape. Apply the tape to the back of the screen, then carefully feed the display cable through the frame. Align the screen and press it into place.

To reassemble your device, follow these instructions in reverse order.