



# Mad Catz Street Fighter IV FightPad Front Case Replacement

Front case removal.

Written By: Eric



# INTRODUCTION

Removing the FightPad's front case for replacing the case or front artwork.



## TOOLS:

- [Tweezers](#) (1)
  - [Phillips #00 Screwdriver](#) (1)
  - [iFixit Opening Tools](#) (1)
-

## Step 1 — Rear and Side Case



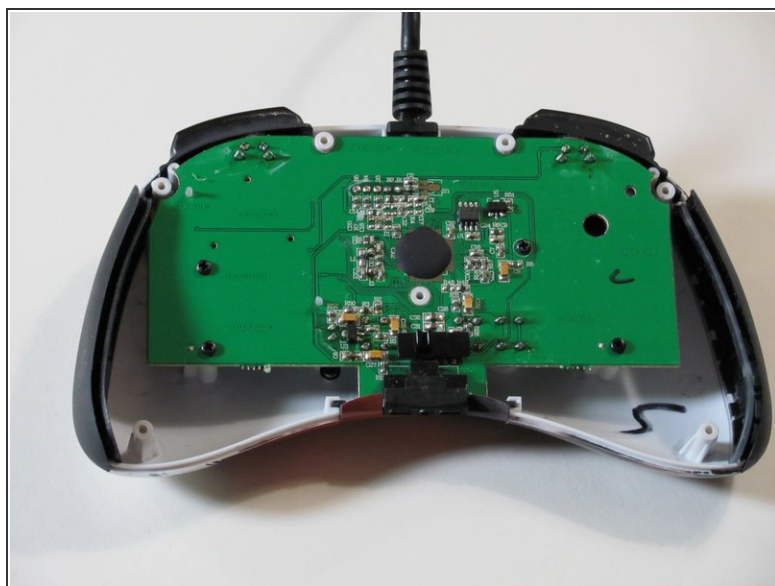
- Use tweezers to completely remove the sticker from the rear of controller.

## Step 2



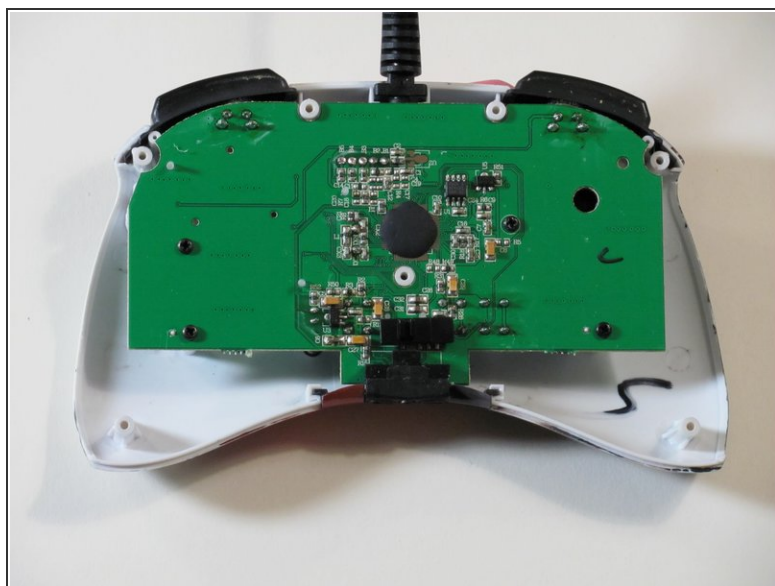
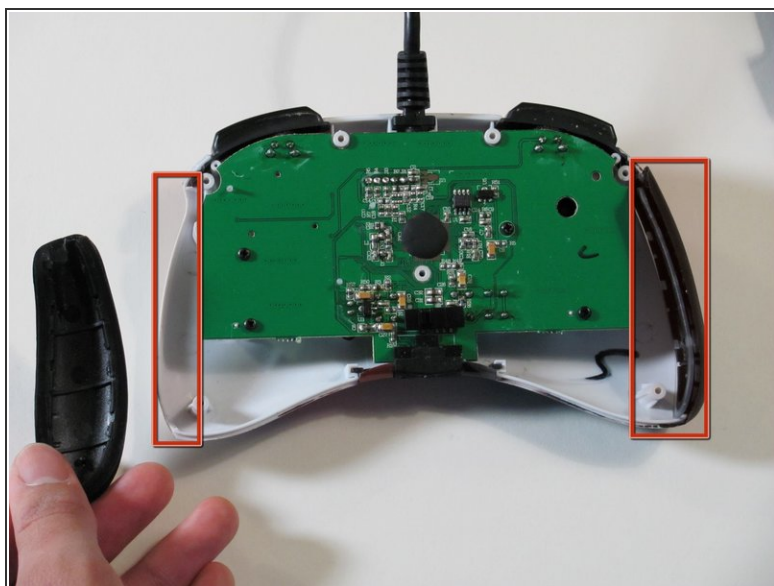
- Find the seven 8.3 mm Phillips screws on the rear of the controller and remove them.

### Step 3



- Use a plastic opening tool to separate the rear and front casing by inserting it in-between the two cases.
- Use the plastic opening tool to pry the two cases apart.

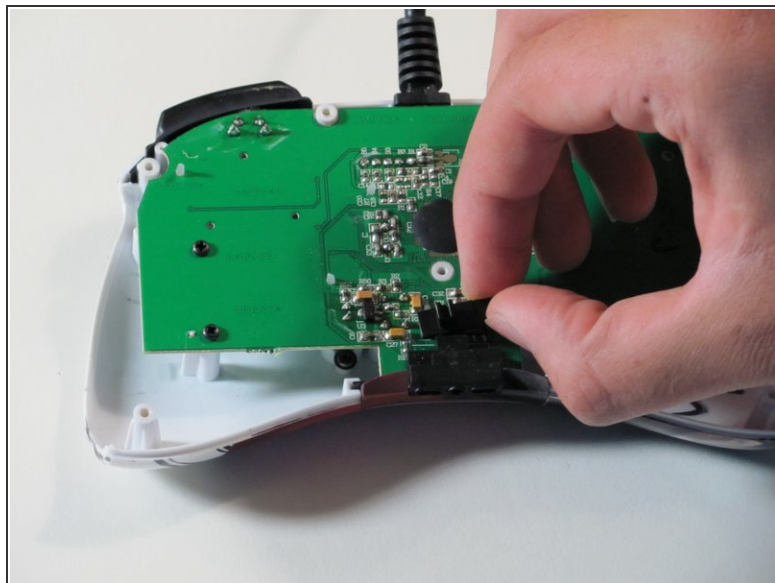
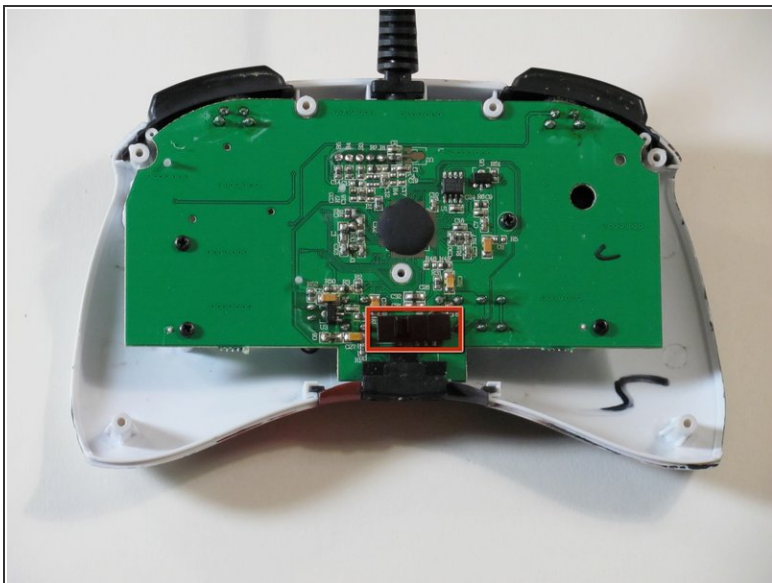
### Step 4



- Remove the two rubber side grips.

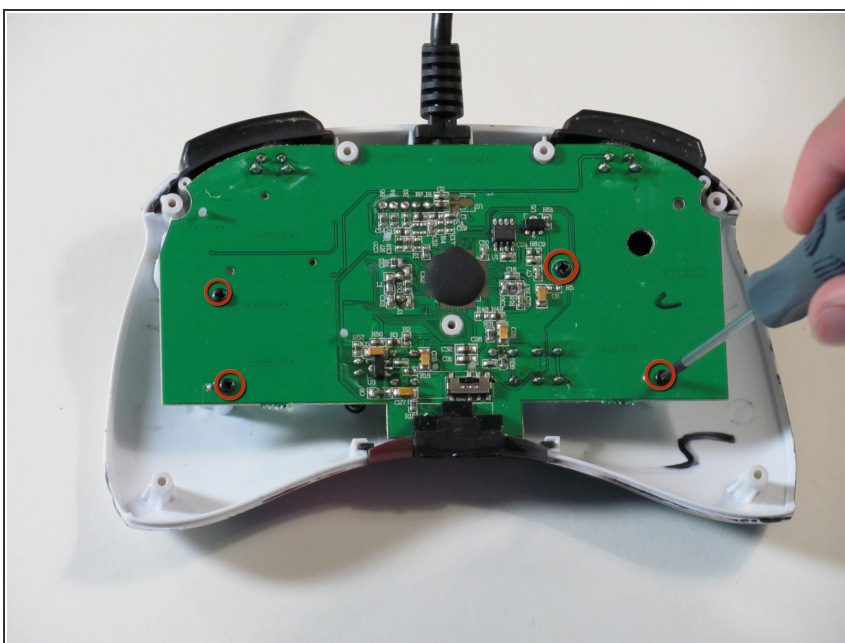


## Step 5 — RS-DP-LS Switch



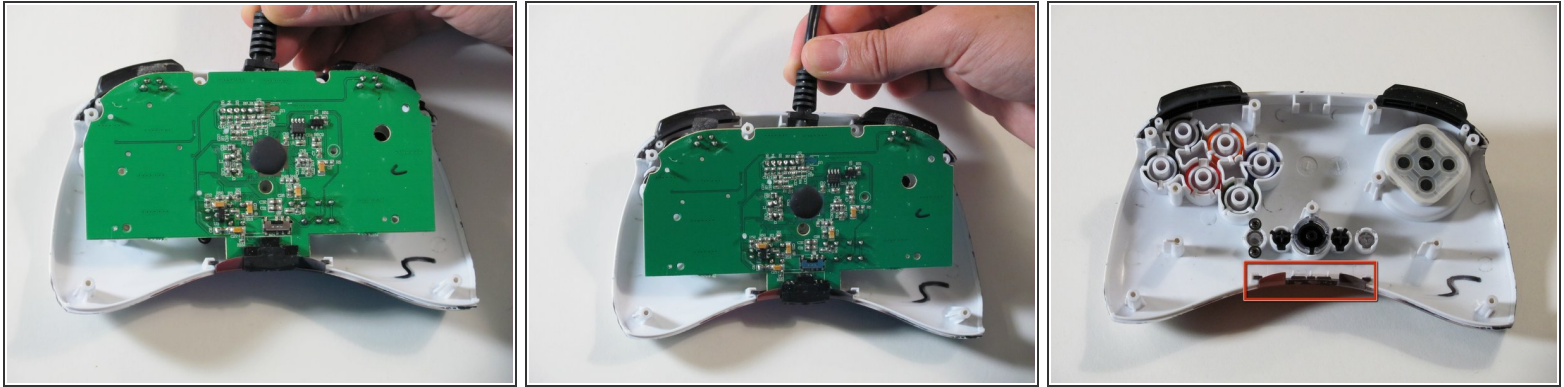
- Locate RS-DP-LS switch.
- Pull upwards on the switch to remove it.

## Step 6 — Circuit Board



- Locate the four 8.3 mm Phillips screws on the circuit board and remove them.

## Step 7

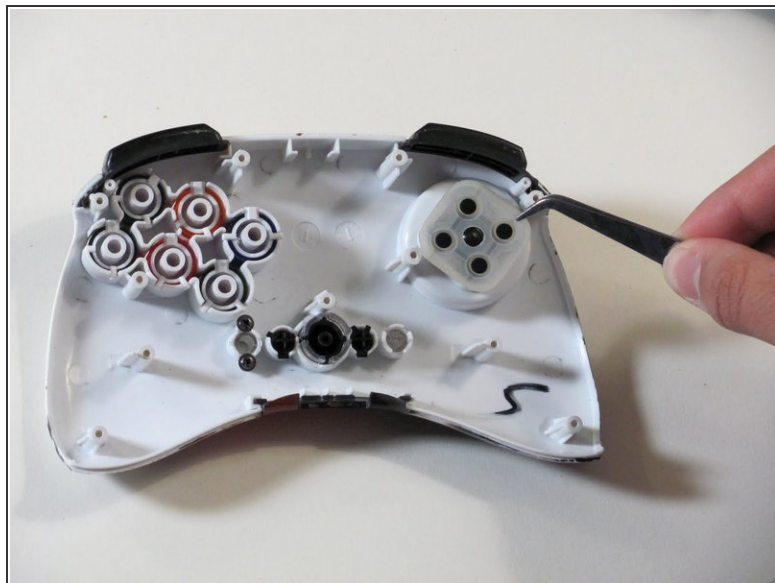
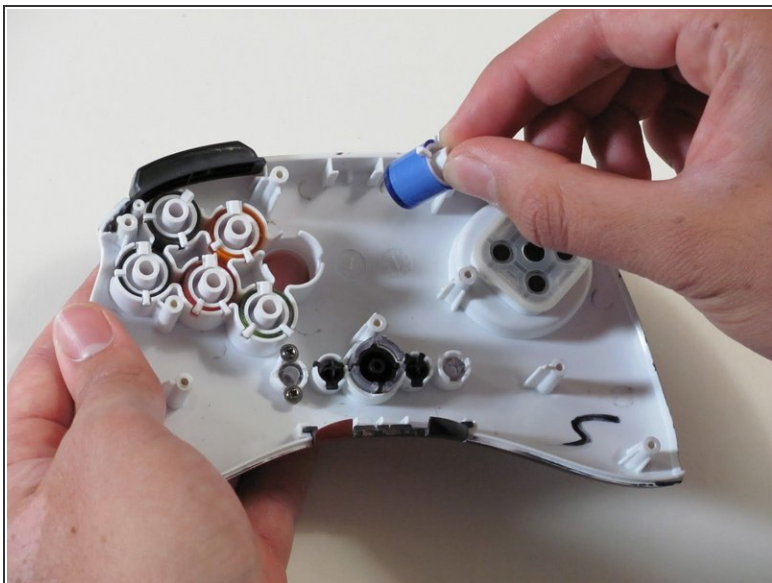


- Hold the controller cable at the area just before it meets the controller and slowly lift upwards to slide it out of its plastic slot and remove the circuit board.

**⚠ Be careful with the wires connected to the circuit board itself as they are thin and delicate.**

- ☑ When reassembling the controller, make sure that the bottom plastic piece is fully inserted into its slot before replacing the circuit board.

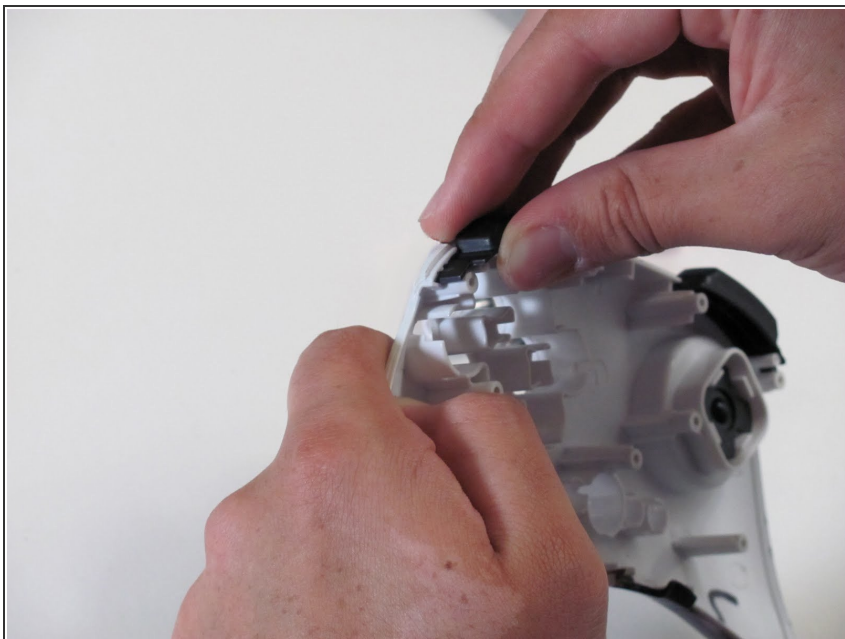
## Step 8 — Buttons



- Remove the six buttons one by one by gripping the back of each one and pushing on them from the front.
  - Use tweezers to remove the rubber part of the directional pad before you try to remove the shoulder buttons.
- ☒ When reinserting the buttons make sure they are in the correct place and oriented correctly.



## Step 9



- Remove the left and right shoulder buttons by sliding them out of their respective slots.

## Step 10 — Front Case



- Pull the plastic piece out from the bottom of the controller.

To reassemble your device, follow these instructions in reverse order.