



Google Home LED Board Replacement

Fix the lights on the top of your Google Home...

Written By: Gabe Hyun



INTRODUCTION

Fix the lights on the top of your Google Home with a new LED Board.

This guide will teach you how to take apart your Google Home to remove a faulty LED Board and replace it with a new one.

TOOLS:

[T6 Torx Screwdriver](#) (1)


[Tweezers](#) (1)

[Metal Spudger](#) (1)

[Pro Tech Toolkit](#) (1)

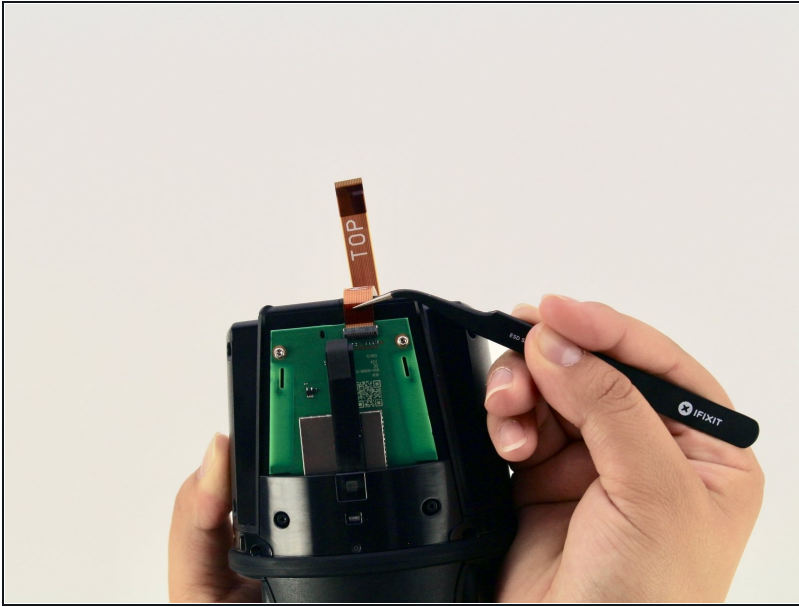
Step 1 — Interconnect Cable



 Removing the lid too quickly could cause you to tear the interconnect cable that attaches the base to the top of the lid.

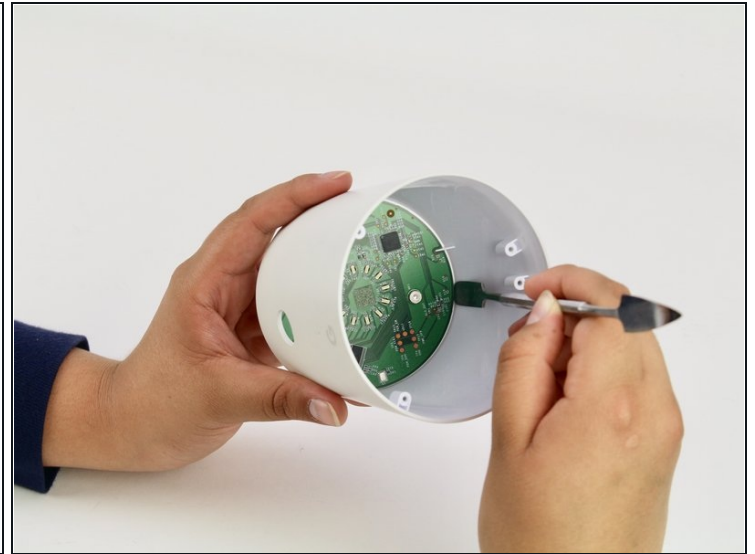
- Pull off the Google Home's magnetically attached base and set it aside.
- Using a Torx T6 screwdriver head, unscrew the four 1.7mm Torx screws deep in the speaker recess so that you can remove the lid.
- After all four screws are out, pop the lid off the device to open the capsule.

Step 2



- Carefully remove the interconnect cable using a pair of [tweezers](#).

Step 3 — LED Board



- Use a metal spudger to pry the LED board away from the lid.
 - ① This will require some force because there is a strong adhesive layer that keeps the LED board attached to the lid, so don't worry about being gentle.
- Remove the LED board.

To reassemble your device, follow these instructions in reverse order.