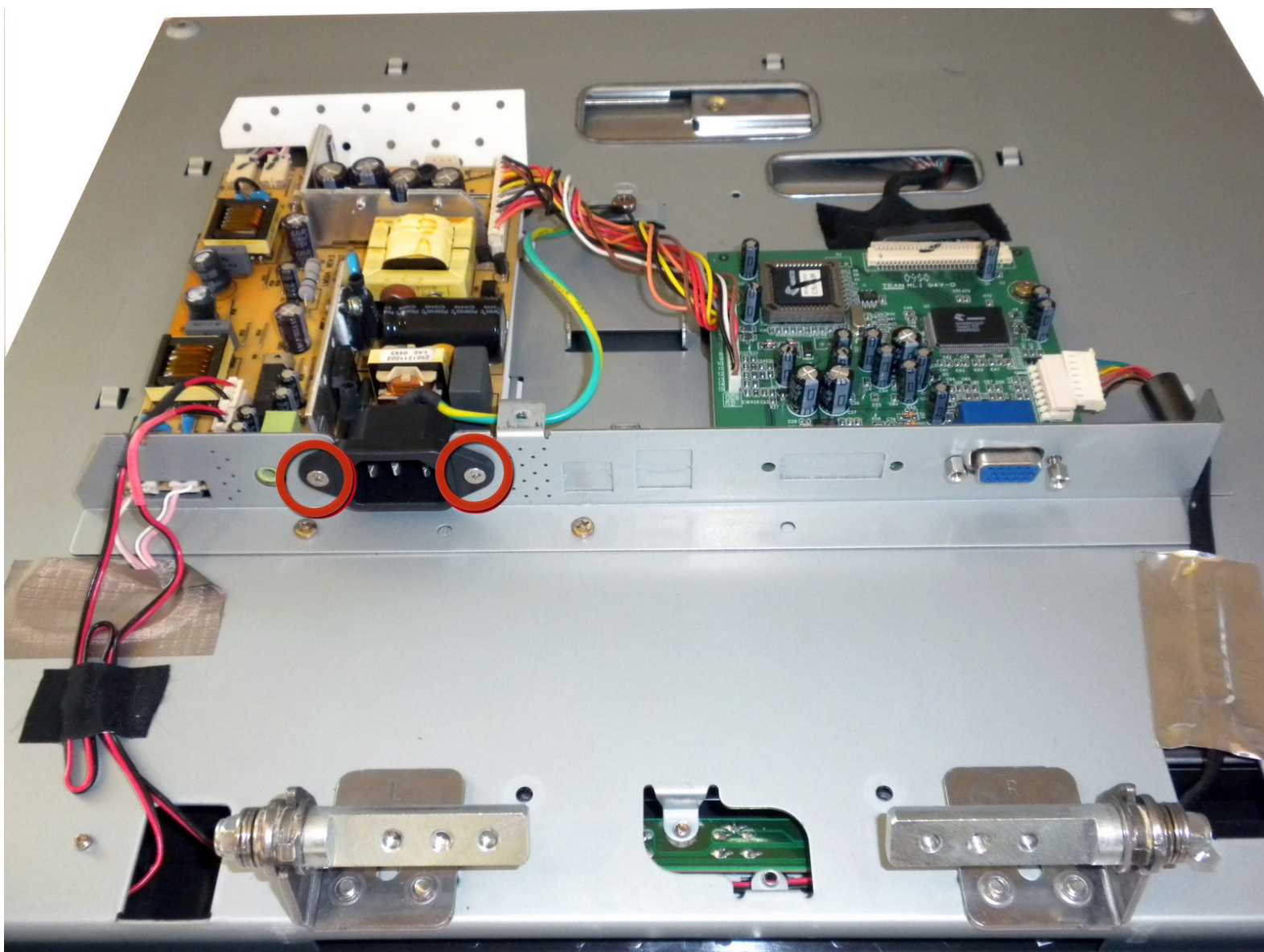




Sceptre X9 Komodo VII Power Supply Unit Replacement

Use this guide to remove the power supply unit.

Written By: Jose Carrillo



INTRODUCTION

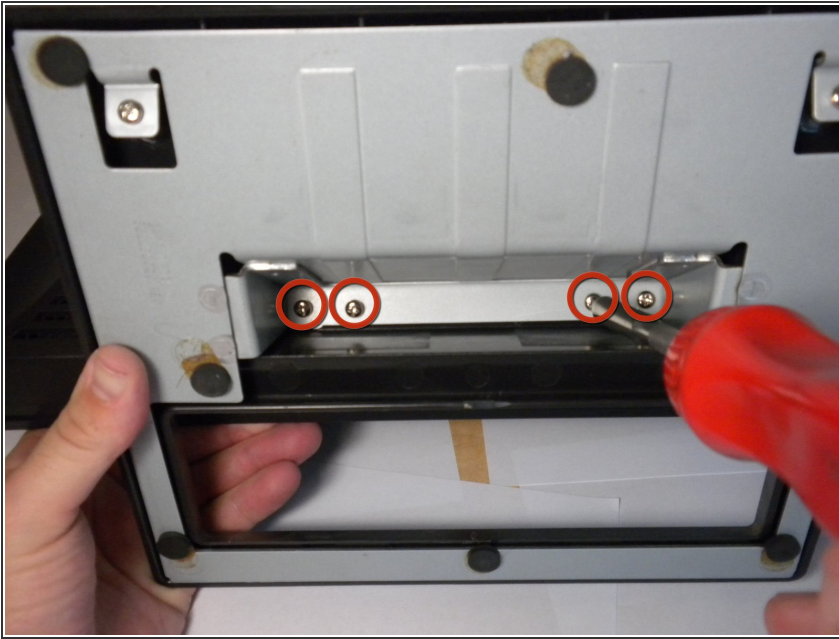
Use this guide to remove the power supply unit.



TOOLS:

- [Phillips #2 Screwdriver](#) (1)
-

Step 1 — Stand



- Place the monitor face down.
- Remove the four 11.5mm screws with a #2 Phillips screwdriver.
- Remove the stand by pulling it out.

Step 2



- Remove two 11.5mm screws with a #2 Phillips screwdriver.
- Remove the plastic bar.

Step 3 — Board Cover



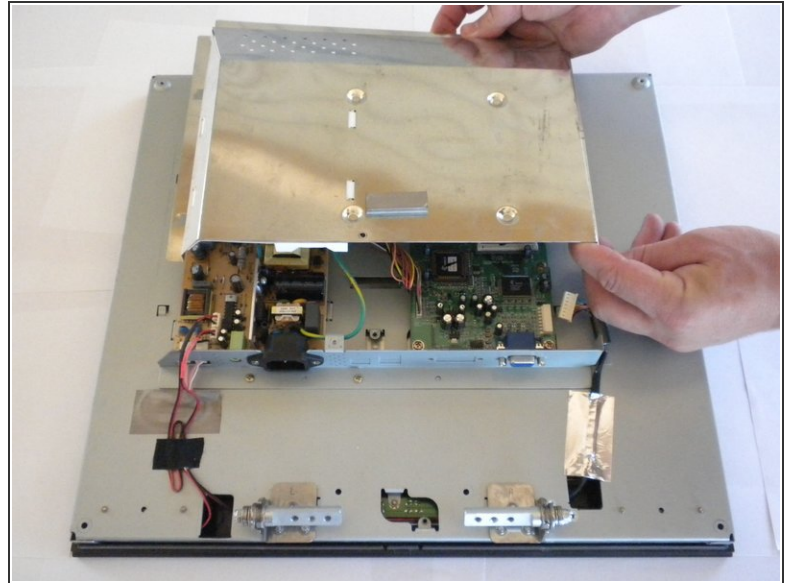
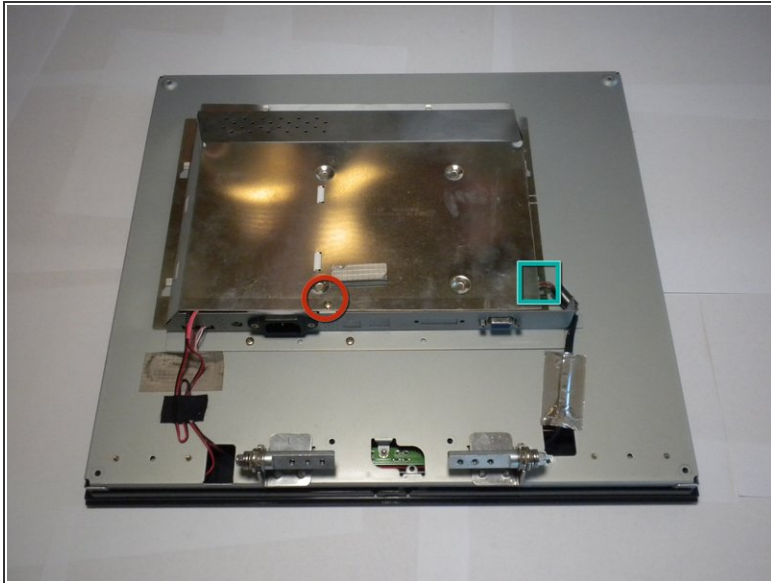
- Using a #2 Phillips screwdriver, remove the six 7mm screws at the circled locations.

Step 4



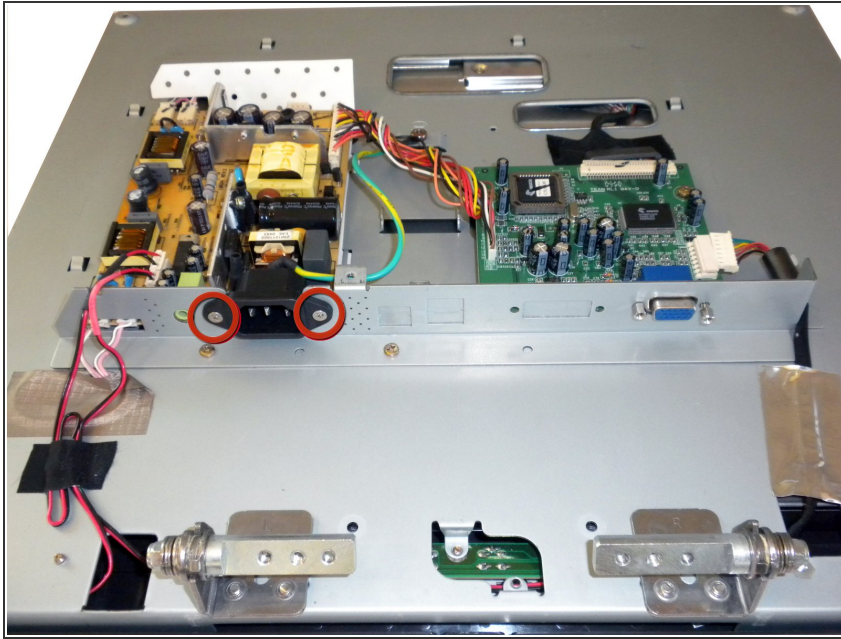
- Pry the monitor using the plastic opening tool to release the clips holding the cover on.
 - ❗ There are four clips on each side, four on the top, and one on the bottom.
 - ❗ You may hear a loud snapping noise when releasing the clips. Do not be alarmed, it is natural.
- Once all the clips have been released, remove the cover by pulling it up.

Step 5



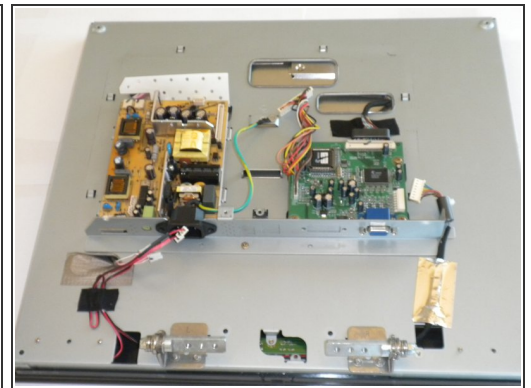
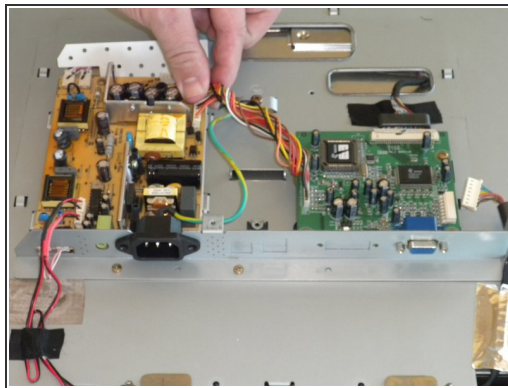
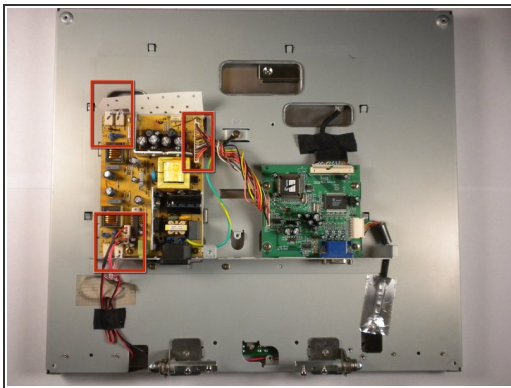
- Using the #2 Phillips screwdriver, remove the one 6mm screw.
- Unplug the indicated cable by pulling on the base.
- Slide the cover toward the top of the monitor.
- Remove the cover.

Step 6 — Power Supply Unit



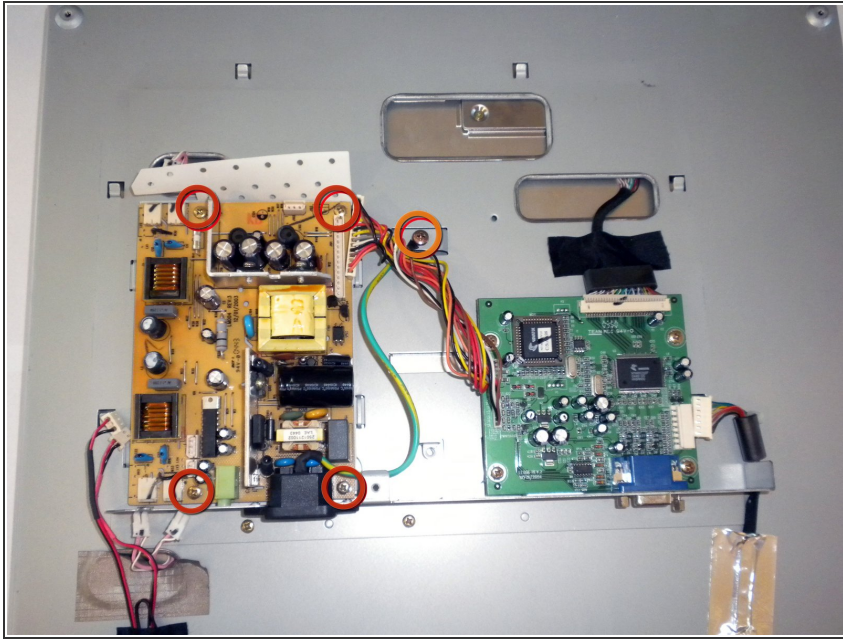
- Using a #2 Phillips screwdriver, remove the two 4.72 mm Phillips screws that hold the power adapter in place.

Step 7



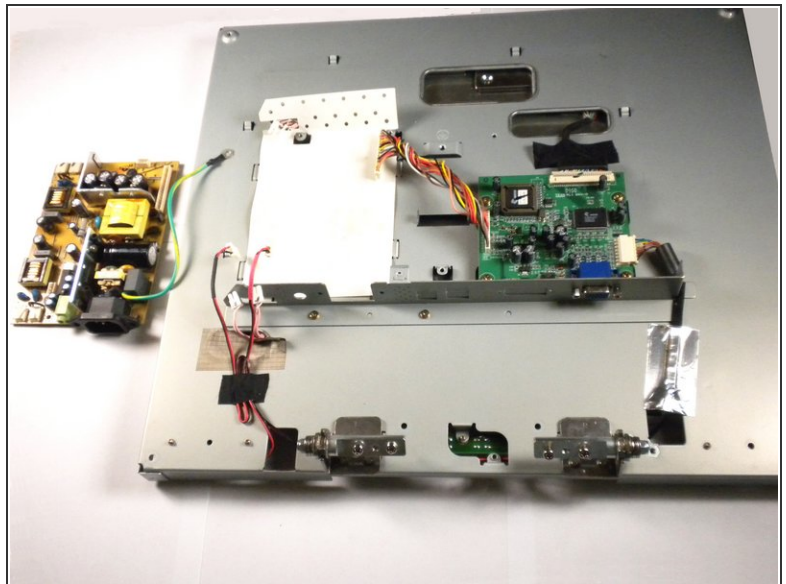
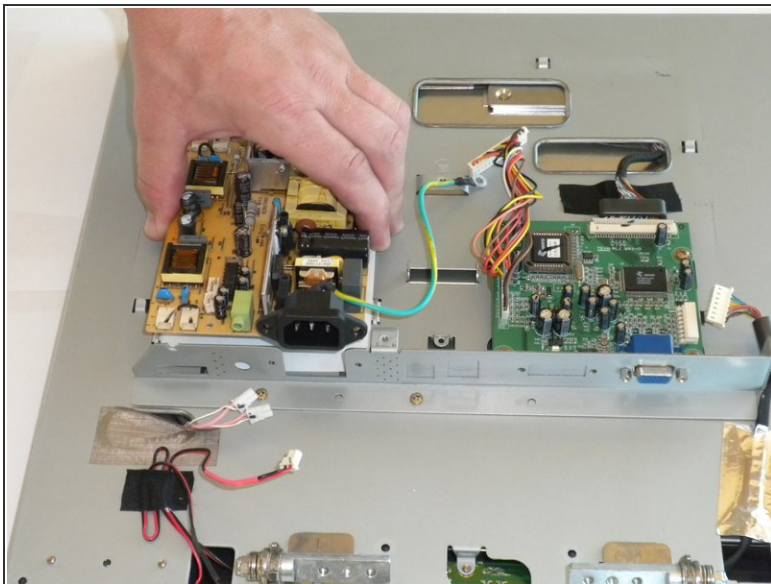
- Unplug the seven connections from the power supply unit by gently pulling on them.

Step 8



- Using a #2 Phillips screwdriver, remove the screws and the wire that is attached to the ground.
 - Four 6 mm Phillips screws
 - One 8 mm Phillips screw

Step 9



- Lift the power supply unit straight up to remove it from the back panel.

To reassemble your device, follow these instructions in reverse order.