



Dell c1760nw Clean main mechanics cleaning and making it work

On many Dell laser printers error 007-371 pops up. It has to do with the main mechanics, or if it's a color LED printer, with the color management.

Written By: GeorgG



INTRODUCTION

In this repair guide you will learn to disassemble your Dell LED / Laser printer to get to the main mechanics to clean them and put them back together, to solve error 007-371.



TOOLS:

- [Kreuzschlitzschraubendreher PH 2](#) (1)
 - [New Item](#) (1)
 - [New Item](#) (1)
 - [New Item](#) (1)
 - [New Item](#) (1)
 - [New Item](#) (1)
 - [New Item](#) (1)
-

Step 1 — Remove error 007-371



- Does your Dell C1760nw (and some other LED/laserprinter models) show you incessantly the error 007-371? Then this repair guide is made for you!

Step 2 — Remove the paper tray



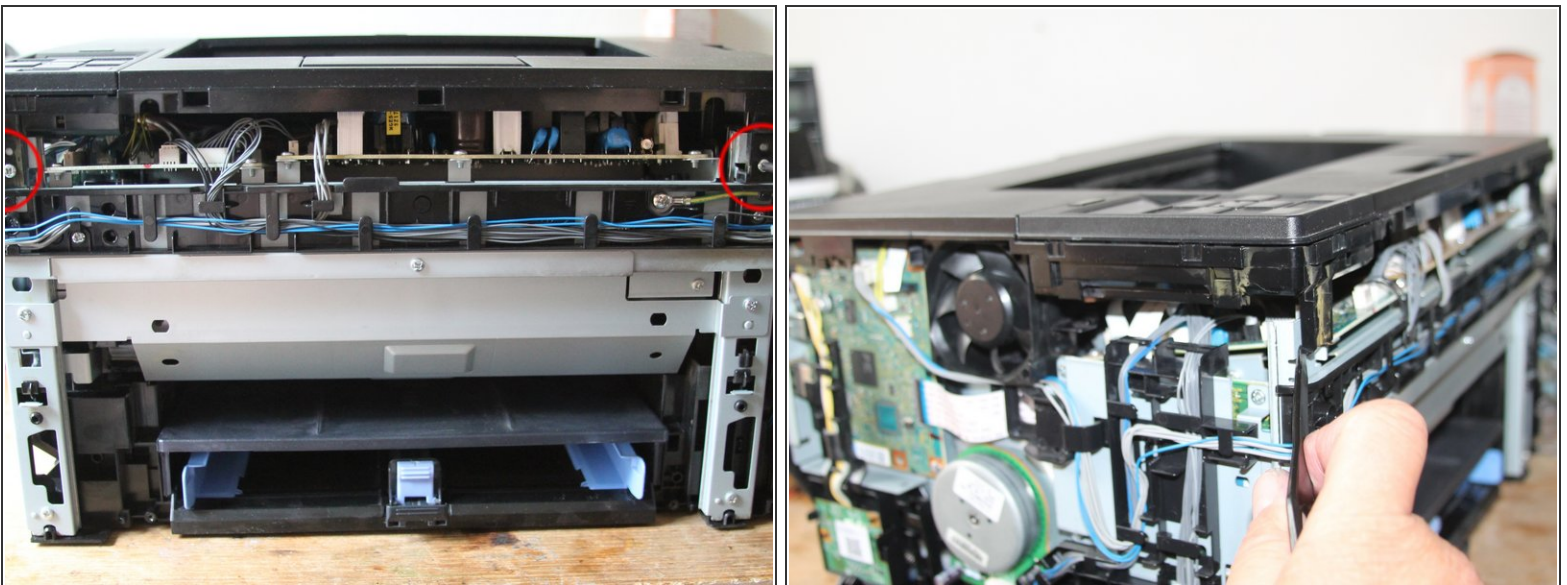
- Remove the front paper tray by slightly bending it carefully and angling it to release the peg from the hinge slot.

Step 3 — Remove front housing parts



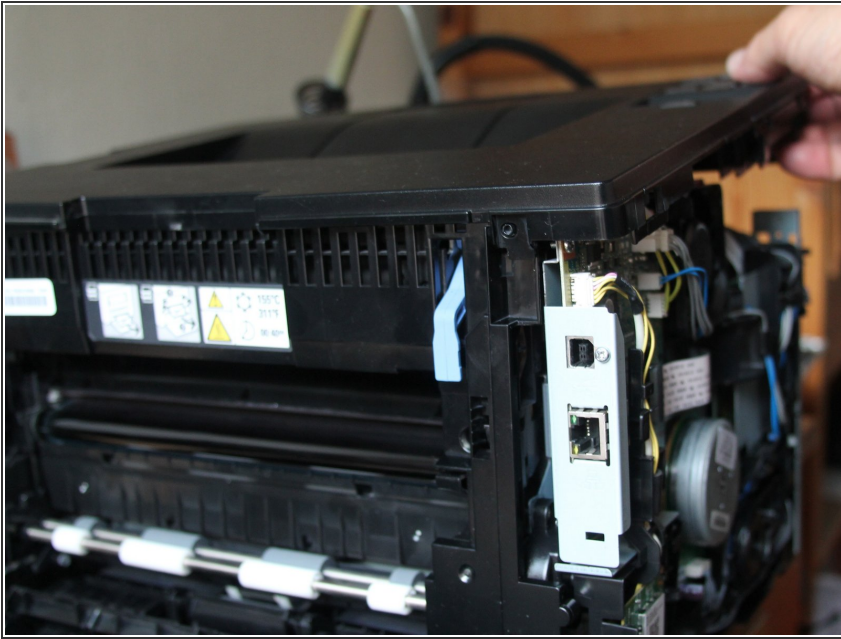
- Remove the bar at the top and the front. (It snaps out with a little effort.)

Step 4 — Remove TopCase



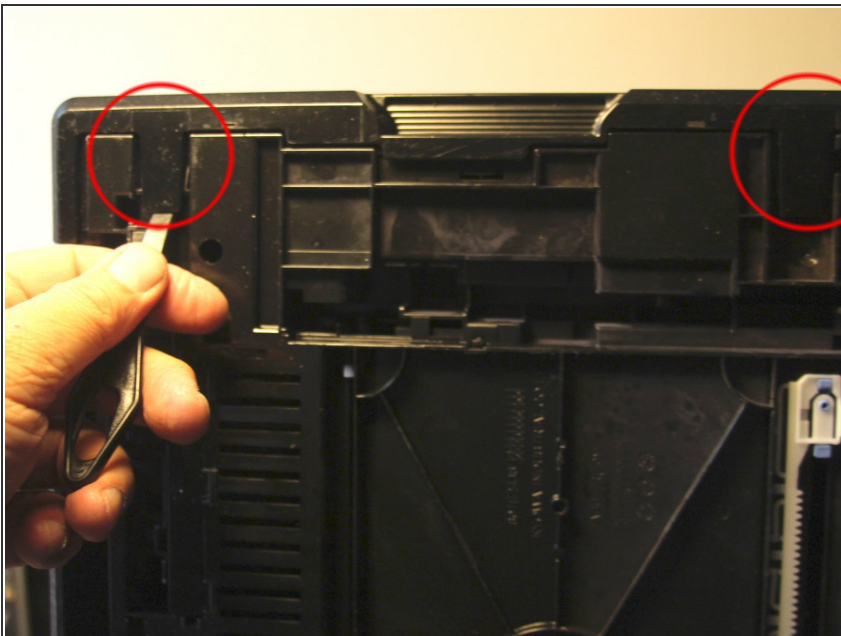
- Remove two screws from the front. And to take off the cover leverage remove the tabs diagonally from the front over the latching.

Step 5 — Continued: Remove TopCase



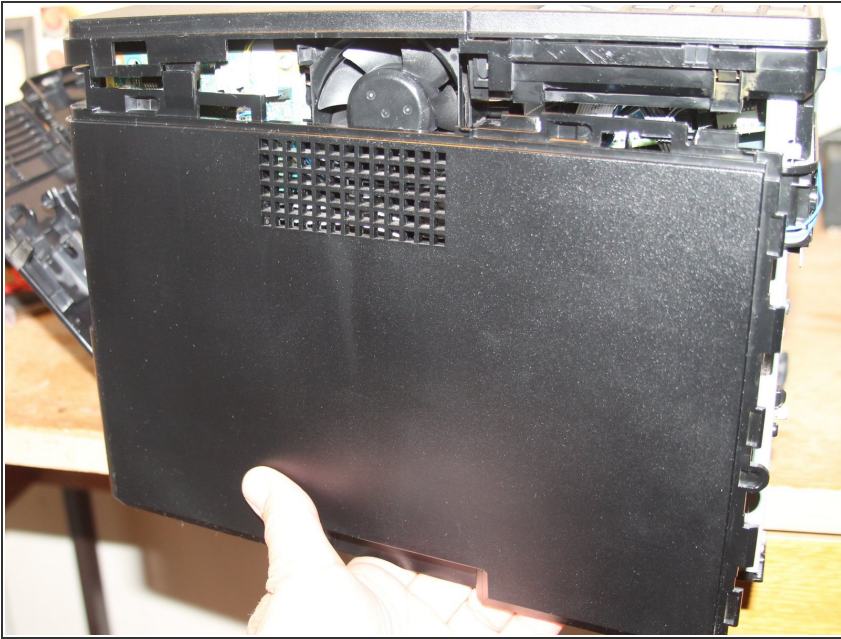
- Carefully lift the cover (Attention: cable connection to the display is hanging there) and rack it to the back of the printer (move it back and forth to unhook the locking nipple): unplug the display connector (yellow lines) from the I/O board, unroute the cable and remove the cover.

Step 6 — Remove left housing part



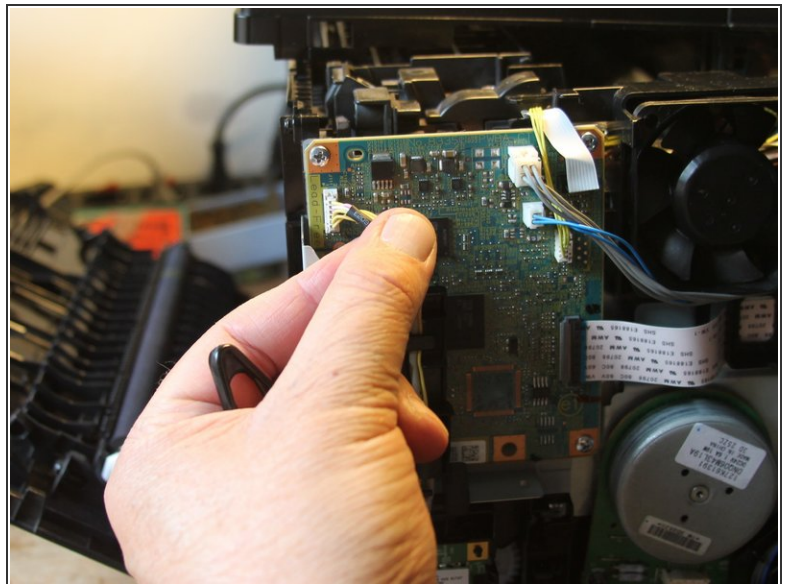
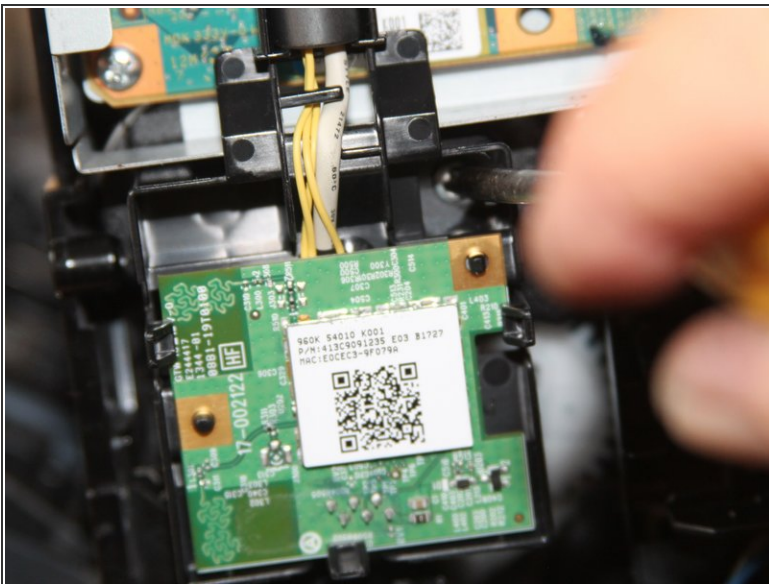
- Place the printer on the right side and remove the left side panel (there are 2 lugs under the printer)

Step 7 — Next: Remove the left housing part



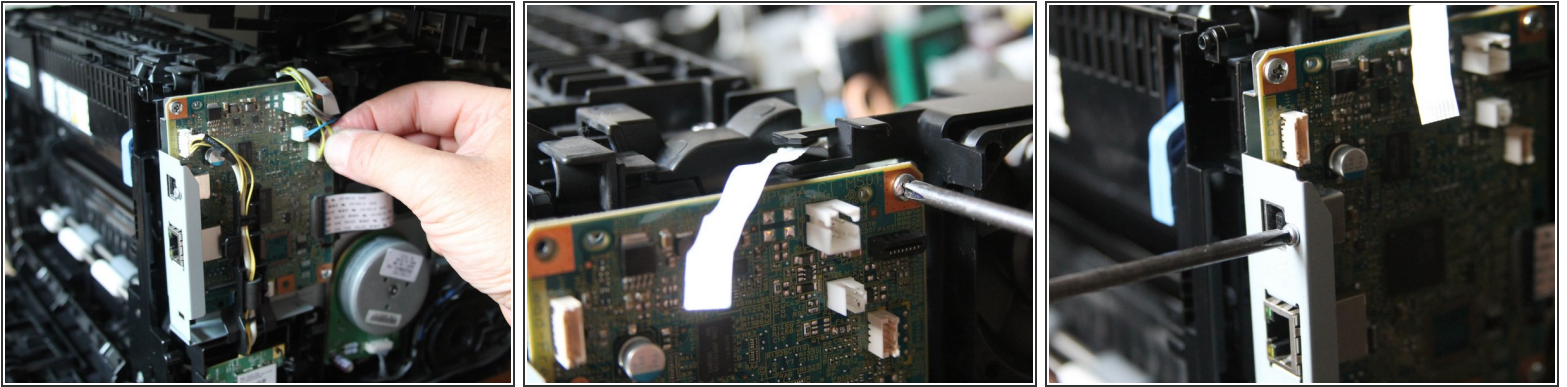
- Reposition the printer and hold the disengaged lugs in the disengaged position. Open the rear flap and slide the side panel backwards while moving away from the printer.

Step 8 — Remove the WLAN card



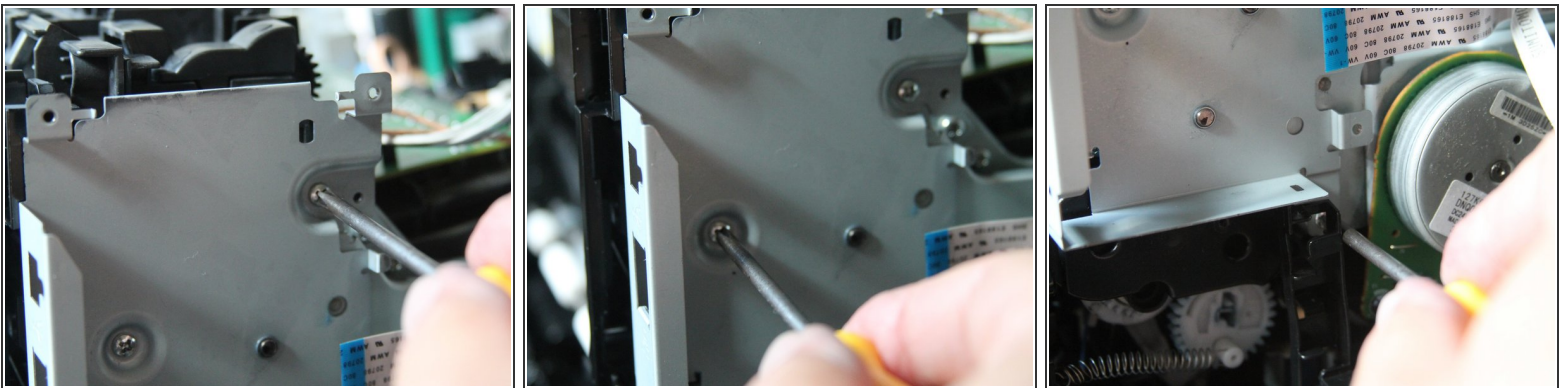
- The WLAN card is secured with a screw-> remove it, carefully unplug the WLAN card and remove the WLAN bracket together with the cable

Step 9 — Remove I / O card



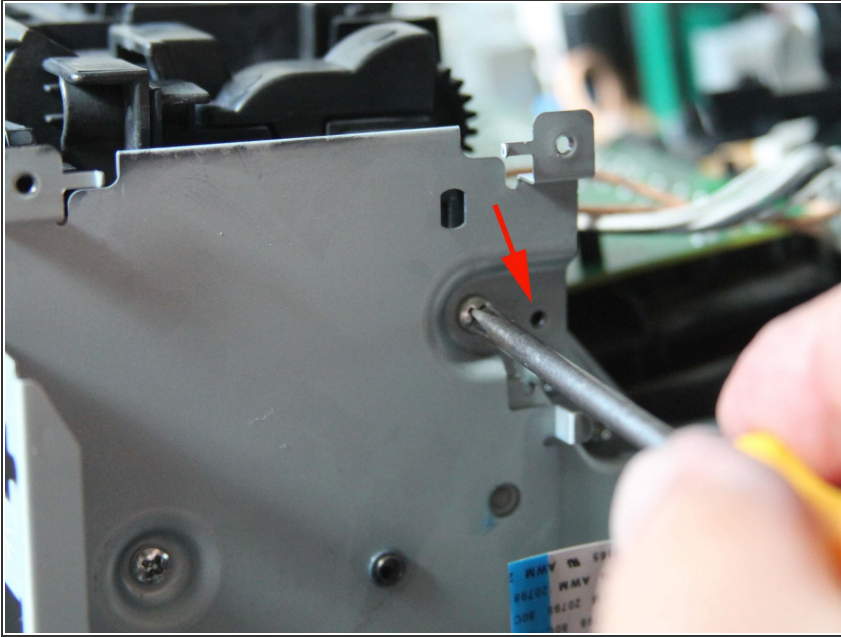
- Loosen all connectors (pull plugs carefully out of sockets)
- Pull both flexible cables out of sockets. Caution: the wider flexible cable has a base with lock. Lift it carefully with a fingernail, this releases the flexible cable and allows it to be easily pulled out of the socket.
- I/O card is secured with 4 screws, loosen all 4.
- There is another screw on the USB port: Loosen it

Step 10 — Remove metal plate (beneath I / O card)



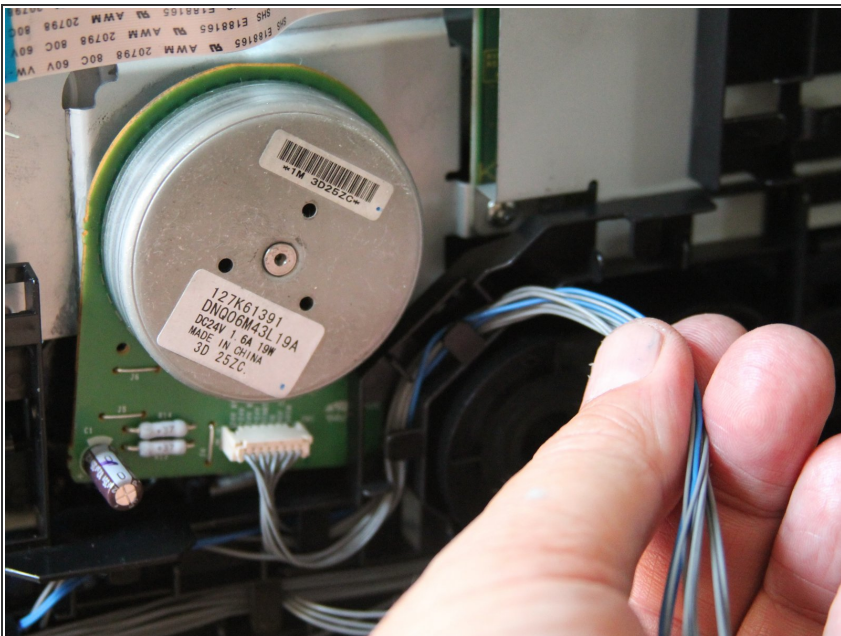
- The metal plate under the I/O card (which holds the I/O card) is secured with 3 screws. Remove all 3 screws

Step 11 — Remove the fan



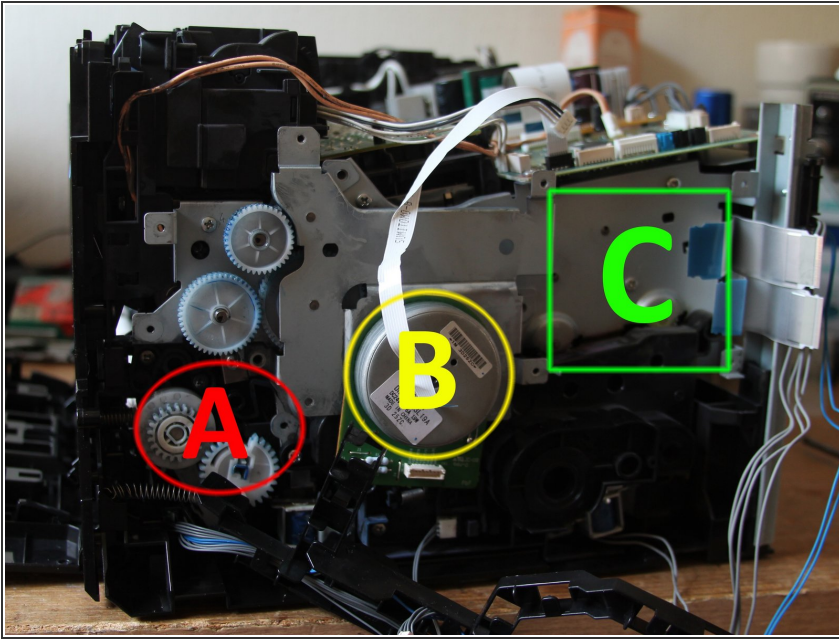
- The fan is secured to this plate with a screw (red arrow): Loosen the screw and unlock the locking device on the other side of the fan.
- Remove the fan, disconnect the cables and plugs on the upper control board (no photo).

Step 12 — Unroute wiring harnesses



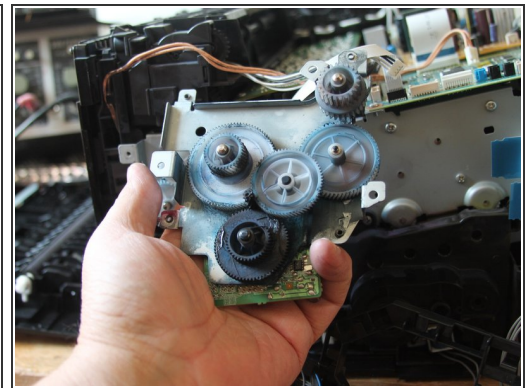
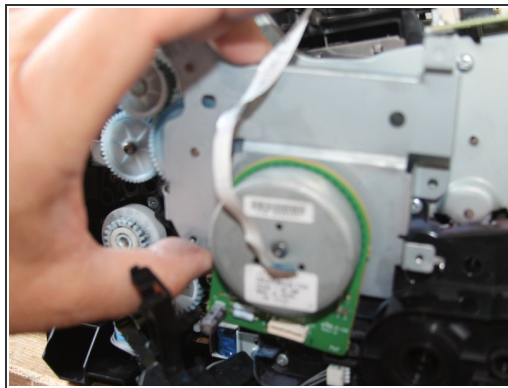
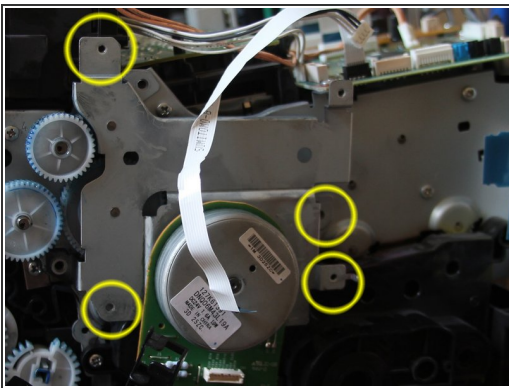
- Unroute all cable harnesses on the left side from the guides.
- Remove the cable guide bracket and hang it from the remaining cable harnesses on the printer.

Step 13 — Remove other components



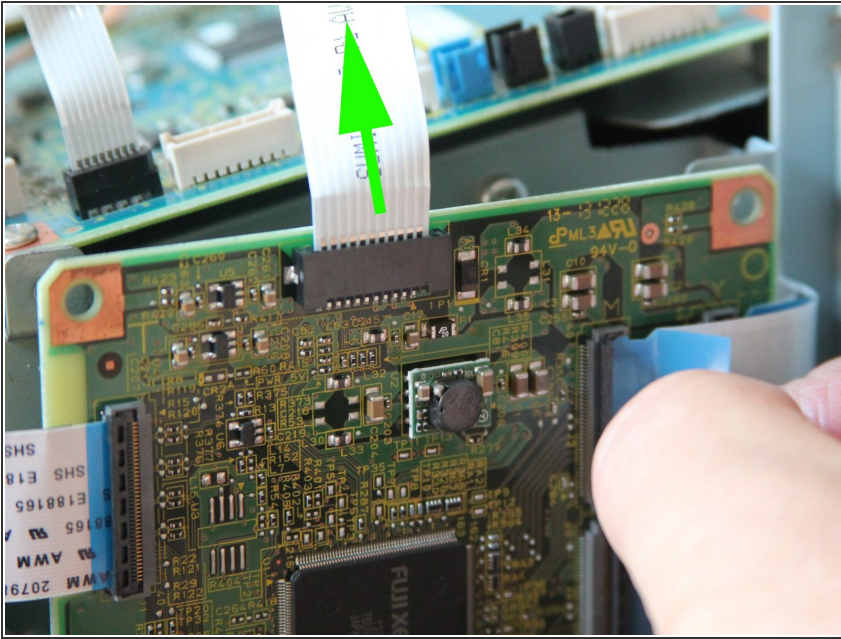
- A) Remove plastic bracket with gear for paper feed (2 screws) - No photo!
- B) Remove main drive
- C) Remove board with color control (4 screws)

Step 14 — B) Remove main drive



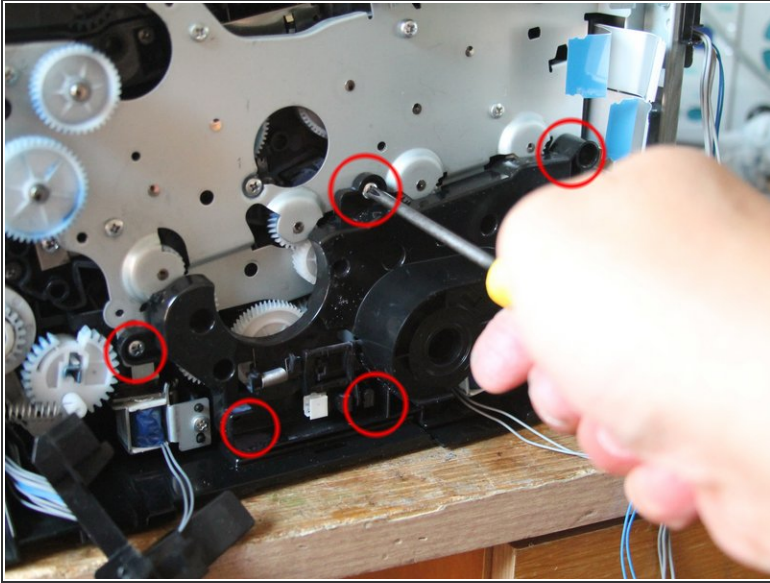
- Loosen 4 screws
- Pull the main gearbox carefully and straight off the printer. (Caution: loose gears!)
- Last photo: This is what the dismantled main gearbox looks like: The completely muddy (color & grease) drive gear is the black (below)

Step 15 — C) Remove board with color control



- Carefully pull the upper flexible cable out of the base
- on the right side: 4 flexible cables with base lock. With fingernail: Open the lock, then carefully lift the flexible cable by the blue tab and remove it from the base. (hand)

Step 16 — Remove the color control gear

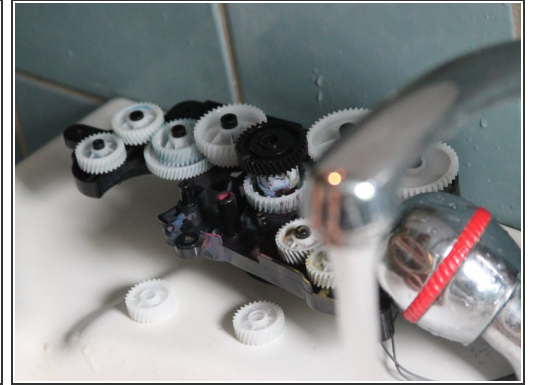


- Next, we remove the color control gear (black, large plastic bracket with 15 meshing gears (5 screws have to be loosened)).


⚠ CAUTION when removing the bracket so that the gears do not fall out!

- ⓘ 2nd photo: removed condition and THE central problem: The paint particles have combined to form a sticky mass with the gear grease.


Step 17 — Washing the gearwheels ...



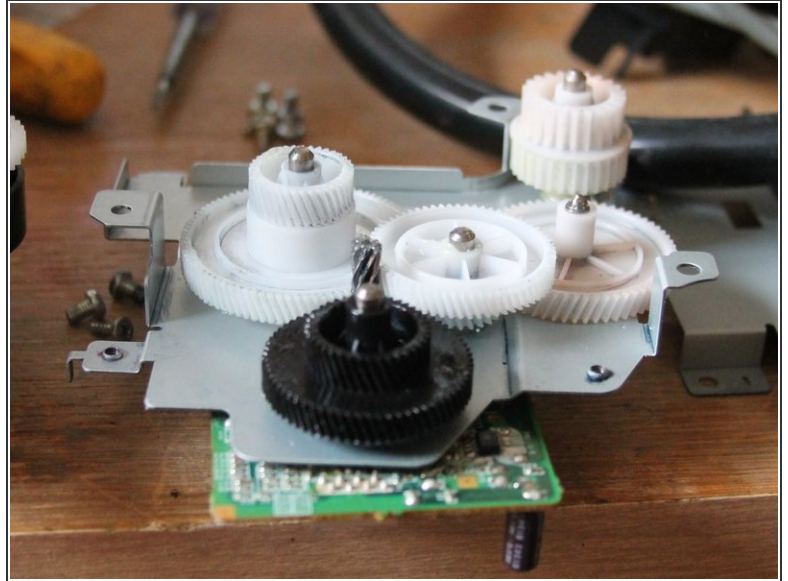
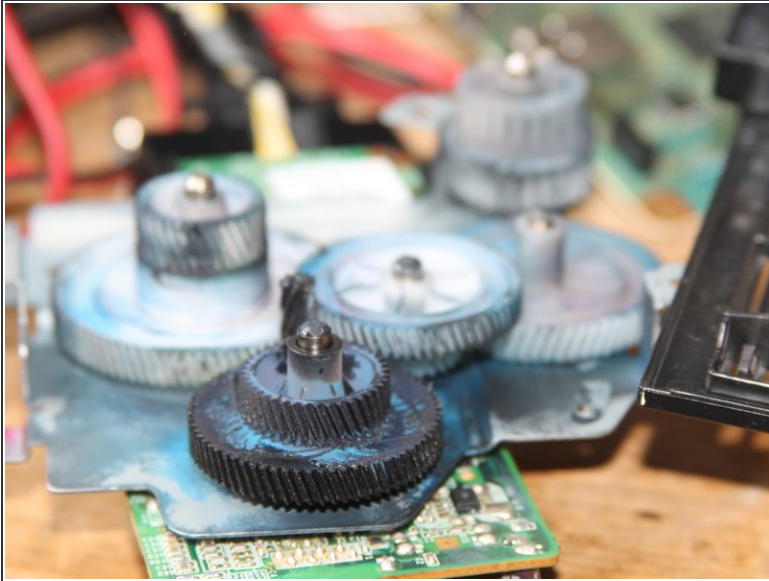
- Washing the gearwheels.

 A toothbrush with plenty of hand soap brings good success here!

 Attention: Every gear wheel has its position! Do not mix them up!

 Attention: Dry all parts (brackets, gears) very well! "Knocking" the ingredients on paper towels helps!

Step 18 — First success



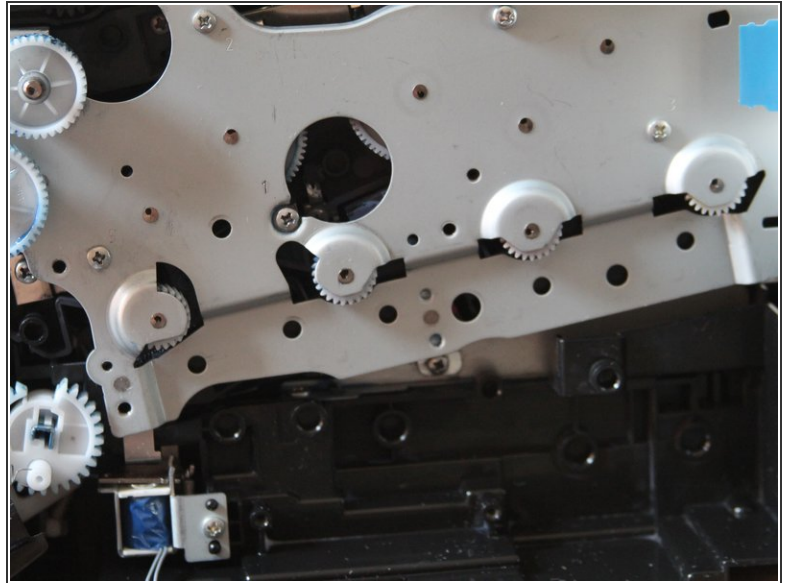
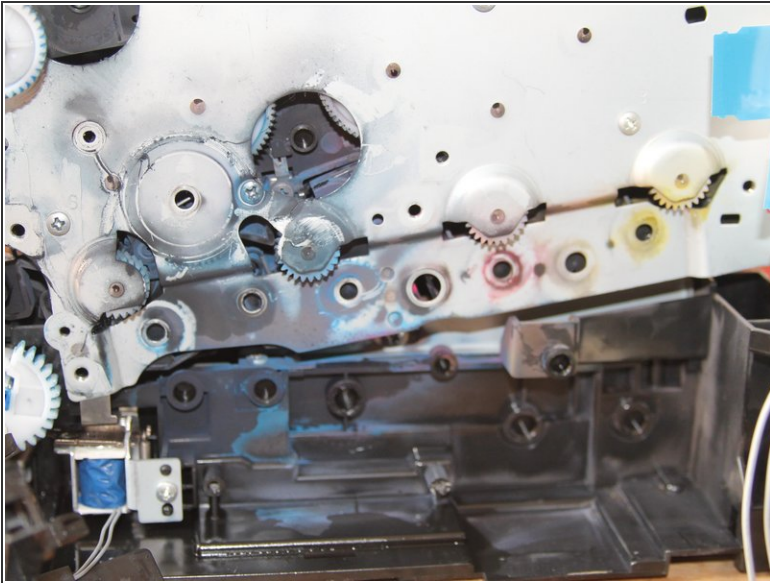
- The "before / after" evidence ;-)
- ❗ I used low-viscosity grease to grease the axles and the teeth. Finally, add a splash of Balistol to the grease on the axles.

Step 19 — Second success



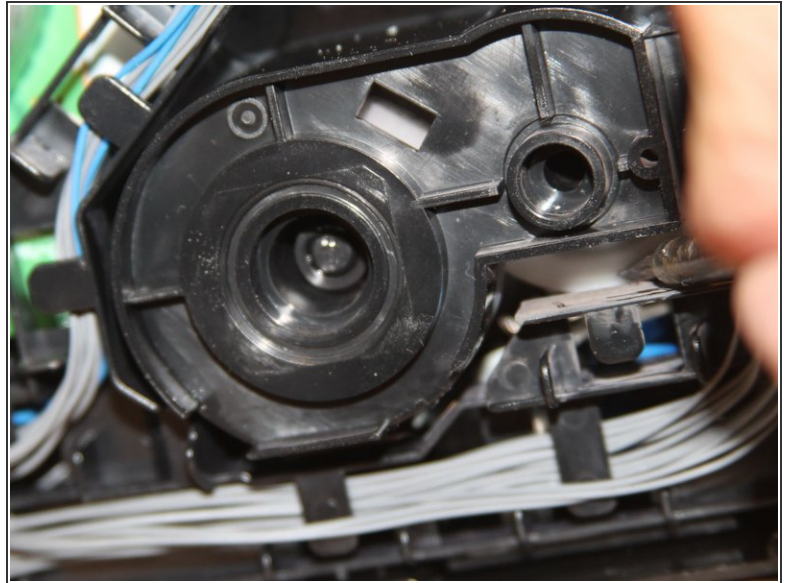
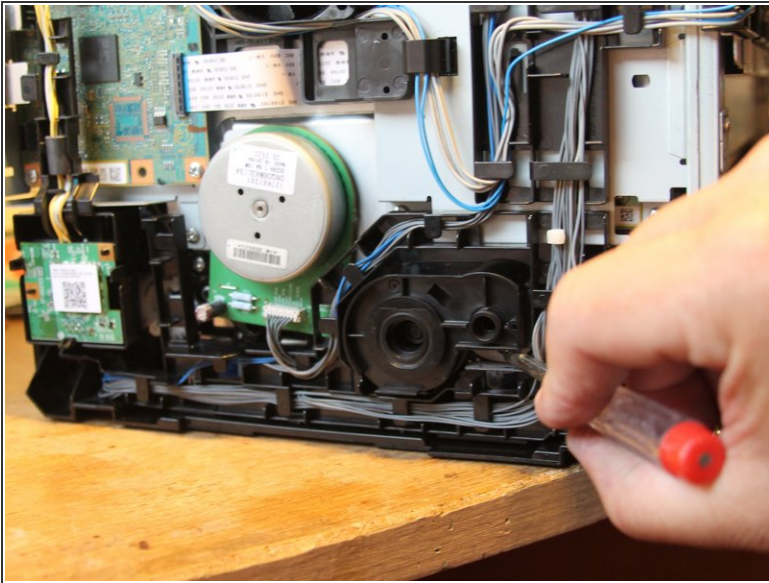
- And once again: before and after

Step 20 — Clean the chassis



- Now the chassis should be cleaned (only for the good feeling! and because of the care...)
- ⓘ Moist all-purpose wipes" in a resealable plastic cover are ideal for cleaning.

Step 21 — After assembly



- The assembly is done in reverse order... Until the printer only needs the right and front housing part plus the paper flap.
- If the error message 007-371 appears again at the first attempt of the printout, this is nothing unusual. The paint mixing drive usually still needs a "boost".
- Turn the printer off and on again a short time later. Now you help the gear a little bit on the jumps: for this you put on a screwdriver as shown in picture 1, hold it with a little pressure so that you can get the gear wheel touched with it a little in motion when it is released by the small relay.
- This usually does not happen by itself during the first printing process (although the spring in the gearbox, which you probably noticed earlier, should actually trigger this momentum). So, put on the screwdriver like this and send a print job.
- In picture 2 you can see a better close-up to attach the screwdriver exactly.
- If everything works, then reassemble everything else and: DONE!

Congratulations, you did it!