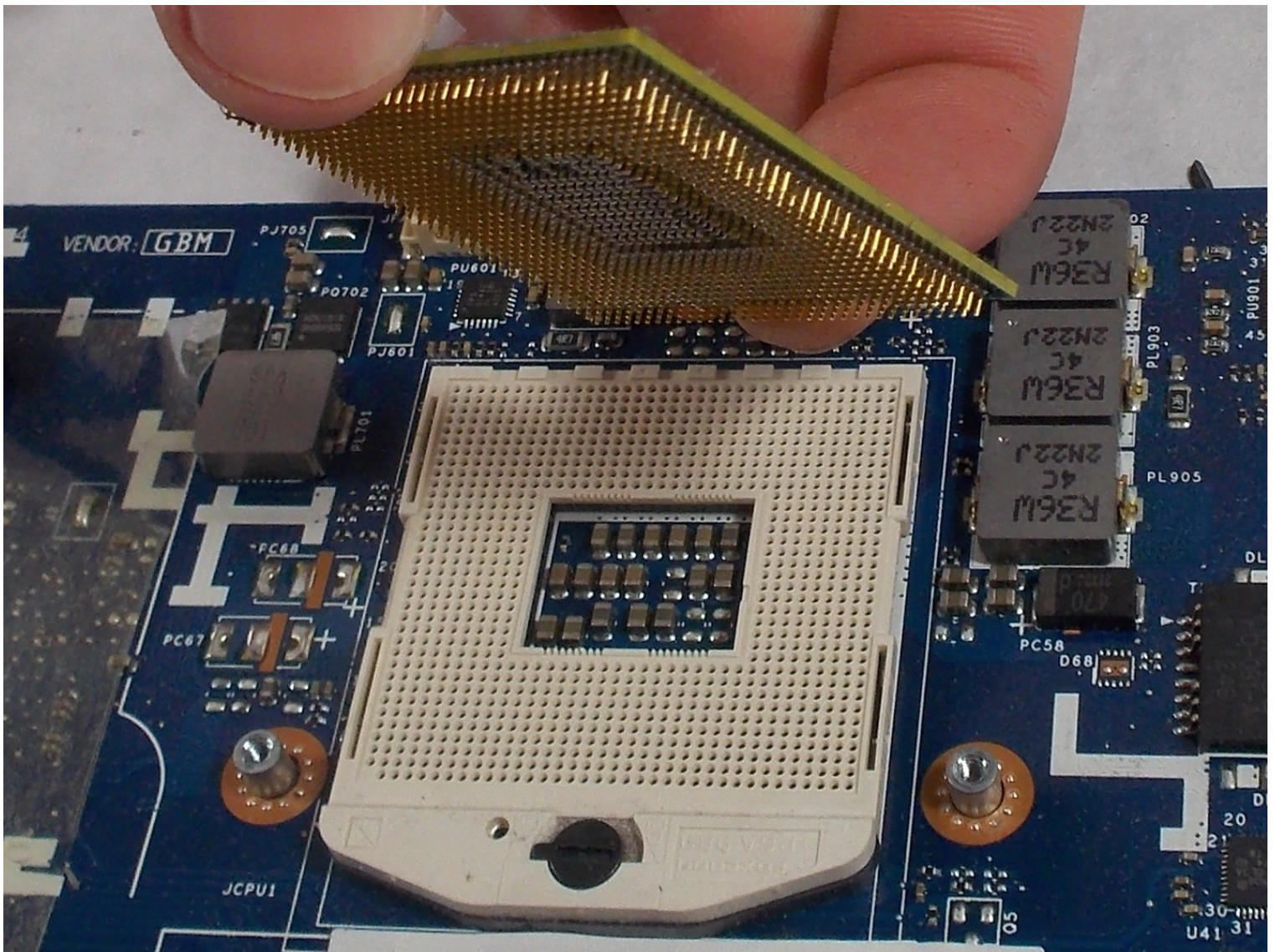




# Lenovo IdeaPad N580 CPU Replacement

If your device is completely unresponsive or...

Written By: Alex Amorim



# INTRODUCTION

If your device is completely unresponsive or continuously freezes as you work, the CPU may be the issue. To replace this part, follow this guide.

---

## TOOLS:

Phillips #0 Screwdriver (1)

6-in-1 Screwdriver (1)

Spudger (1)

Arctic Silver Thermal Paste (1)

---

## Step 1 — Battery



- Turn over the device so that the bottom is facing up. Make sure the hinged side is facing you.



## Step 2



- Move the right switch towards the right until it clicks in place. You should then see the color red reveal from where the switch was originally.

## Step 3



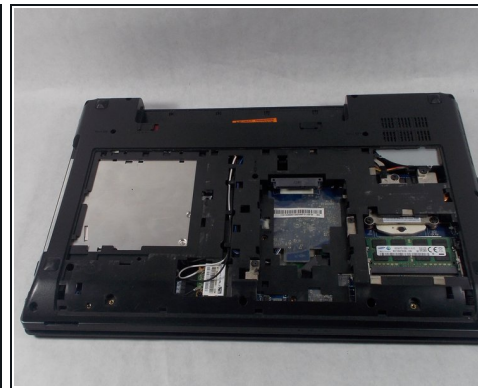
- Now take your left hand and slide the left switch to the left.
- ⓘ This switch will not click in place like the other switch, so make sure to keep your left hand on the switch.

## Step 4



- Take your free hand and place it on the battery. Gently slide it away from its slot.

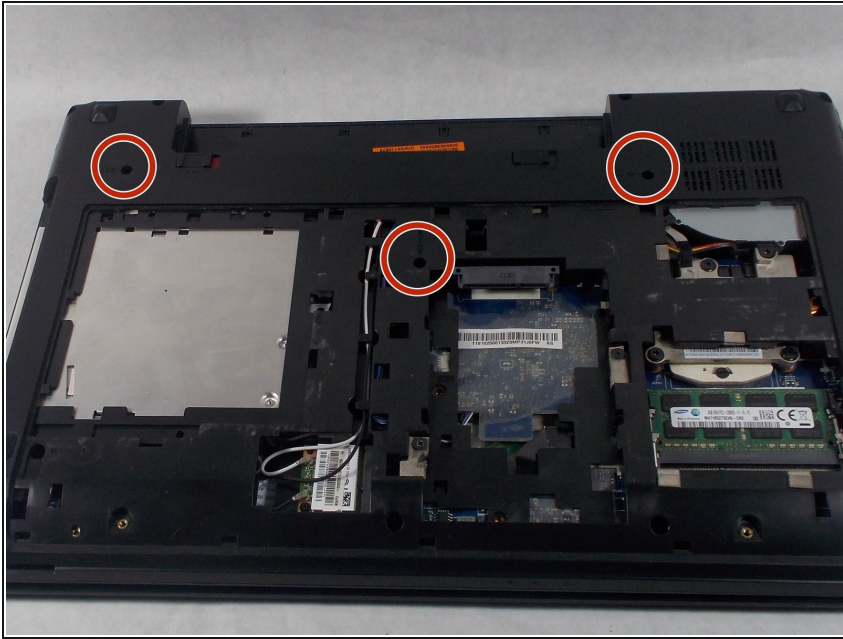
## Step 5 — Keyboard and Trackpad



- Rotate the laptop so that now the hinge is facing away from you.
- Remove the two 2.5 x 4.0 mm Phillips #0 screws from the underside of the laptop.
- Slide the bottom panel towards you until it stops, and then carefully lift it off.

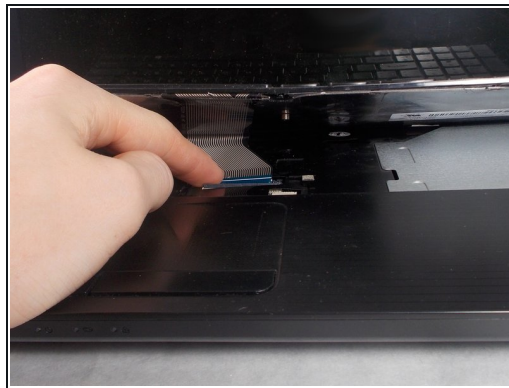
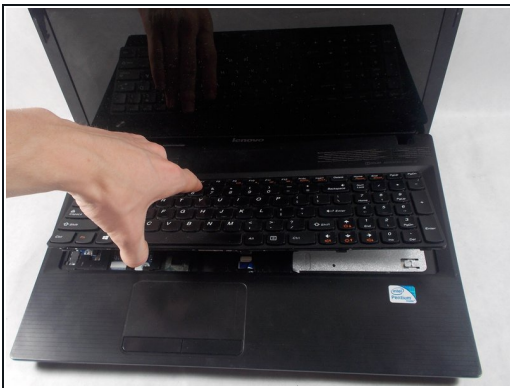


## Step 6



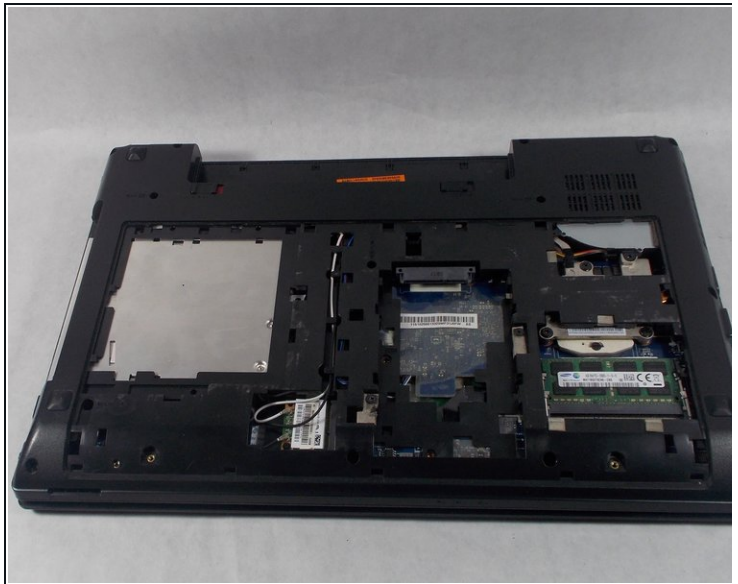
- Remove the three 2.0 x 6.0 mm Phillips #0 screws located on the underside of the device.

## Step 7



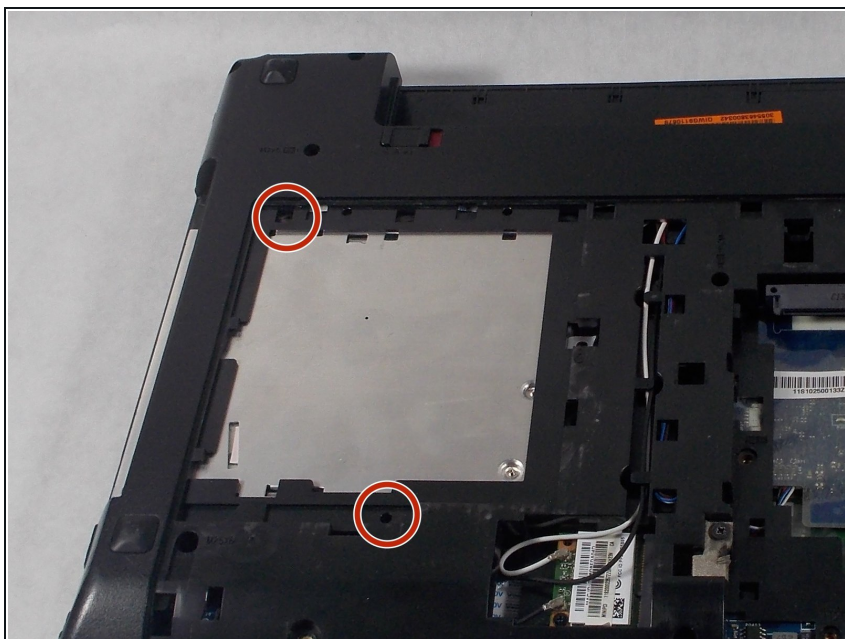
- Turn the laptop right side up and open the lid.
- Using the spudger and your fingers, get in between the keyboard's edge and lift it up.
- Carefully lift the keyboard ribbon cable out of the socket it is in.

## Step 8



- Remove the 2.5 x 6.0 mm Phillips #0 from the center of the device.
- Close the laptop and place it face down once again.

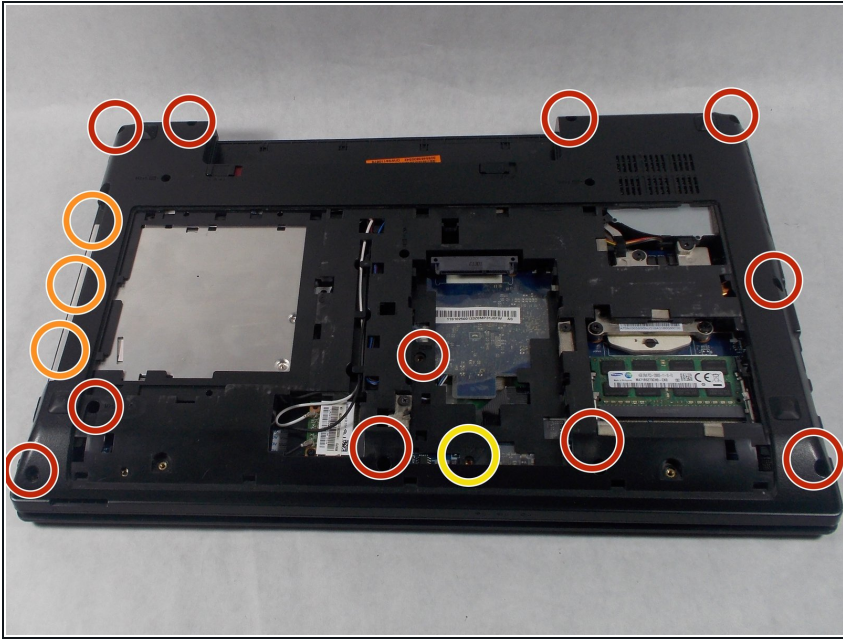
## Step 9



- If a hard disk drive is installed, remove the two 2.5 x 4.0 mm Phillips #0 screws.
- Slide the hard disk drive out of its socket.



## Step 10



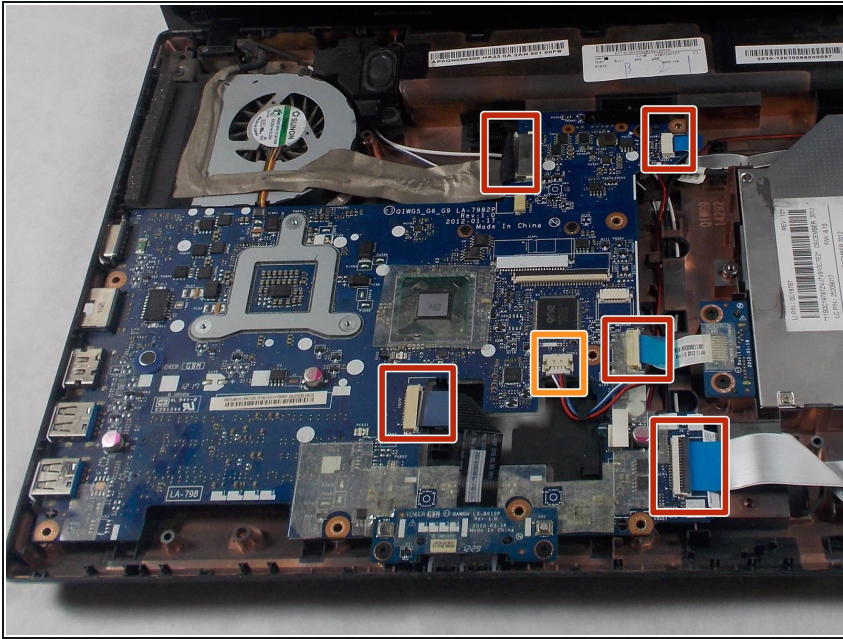
- Remove the eleven 2.5 x 6.0 mm Phillips #0 screws.
- Remove the three 2.0 x 3.0 mm flat head screws.
- Remove the 2.5 x 4.0 mm Phillips #0 screw.

## Step 11



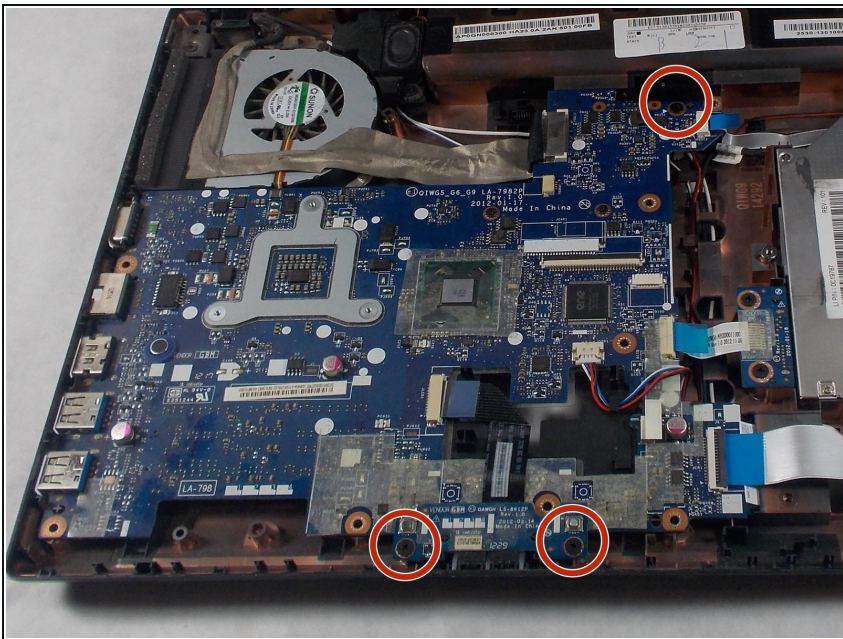
- Turn the laptop right side up and open the lid.
- Disconnect the two ribbon cables from the center.
- Lift the keyboard bezel (with trackpad) straight up and out.

## Step 12 — Motherboard



- Remove the five ribbon cables on the top of the computer.
- Gently remove the single cable from its socket.

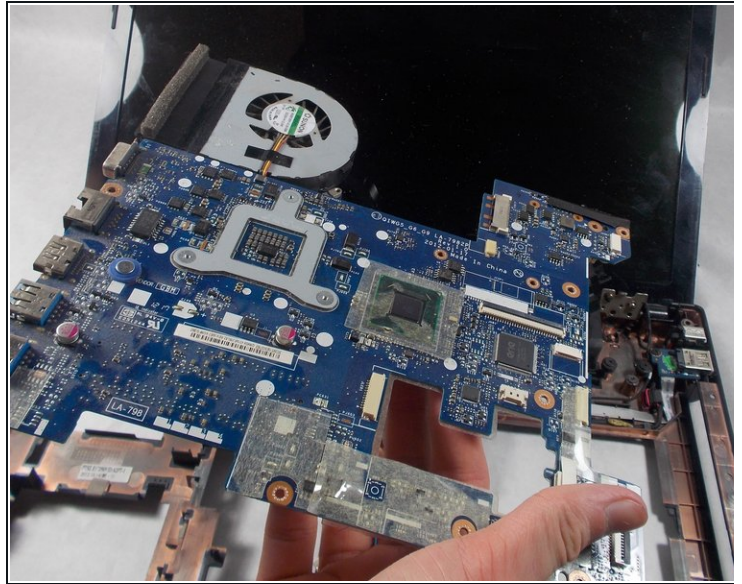
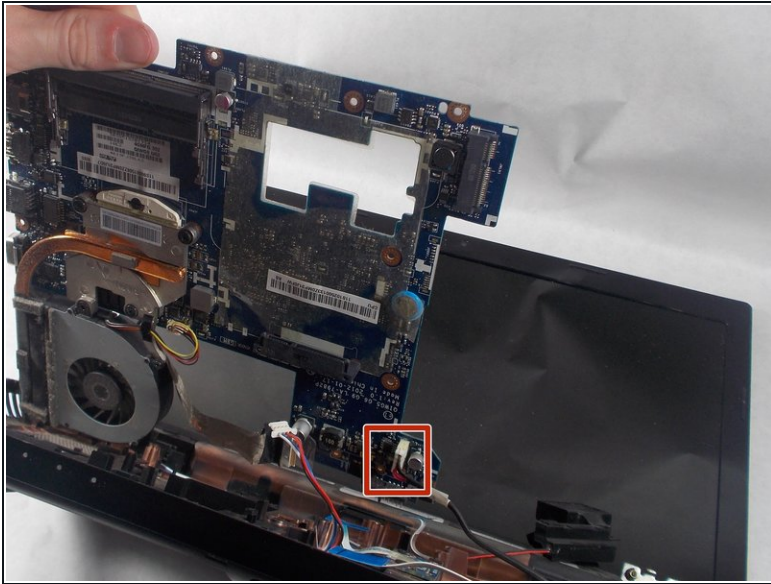
## Step 13



- Remove the three 2.5 x 3.0 mm Phillips #0 screws on the motherboard.

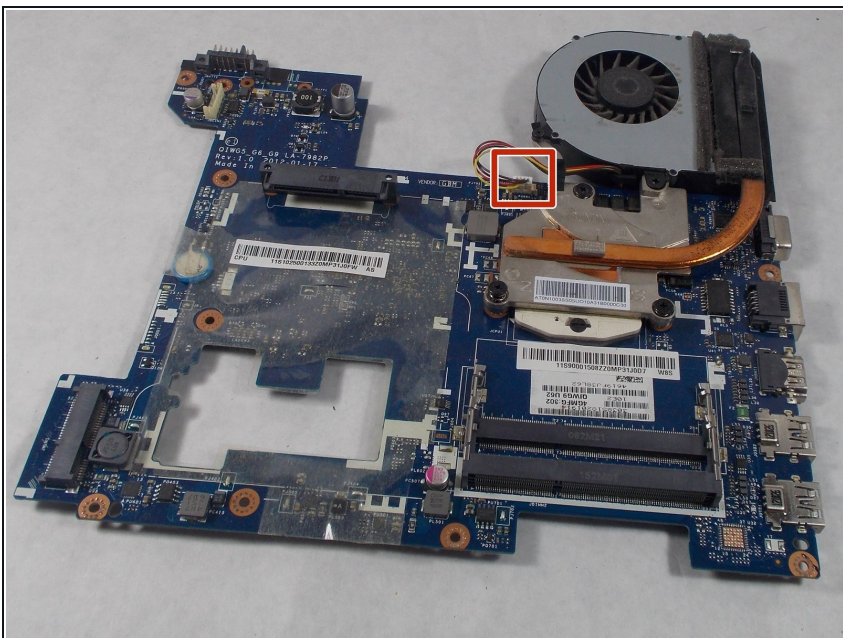


## Step 14



- Using your fingers or a spudger, lift the motherboard slightly.
- Detach the single cable from underneath.
- Lift the motherboard the rest of the way out.

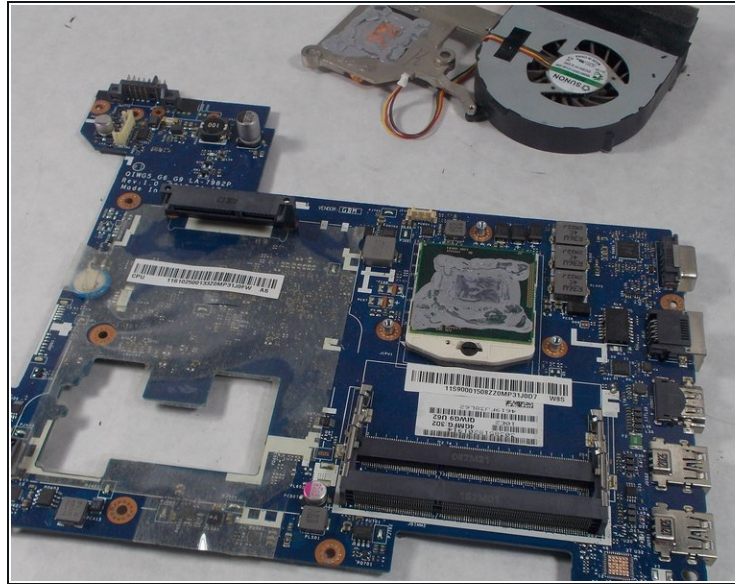
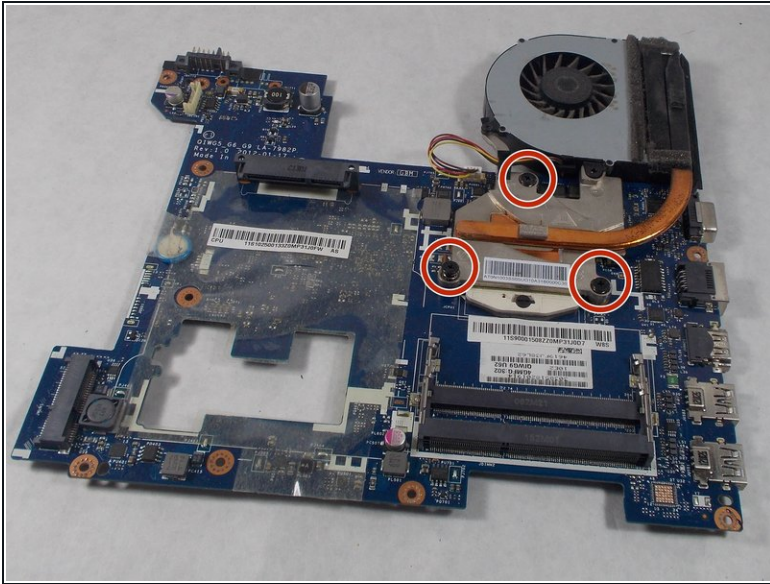
## Step 15 — CPU



- Detach the cable next to the fan assembly.

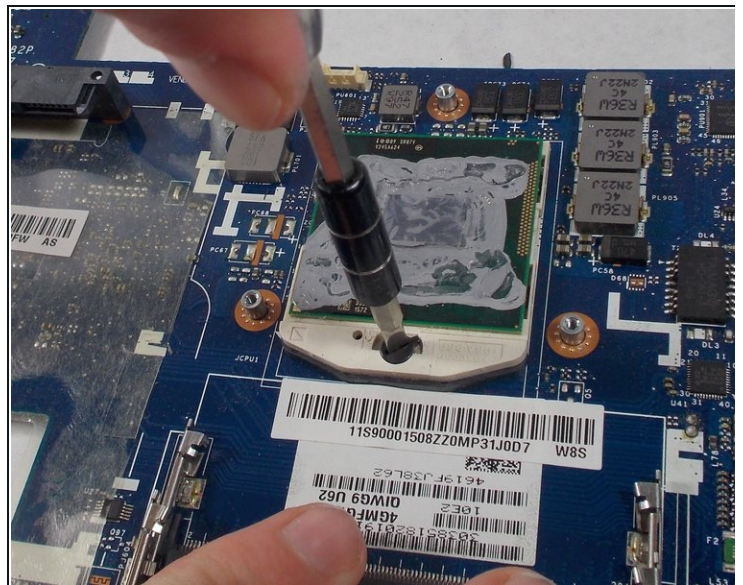
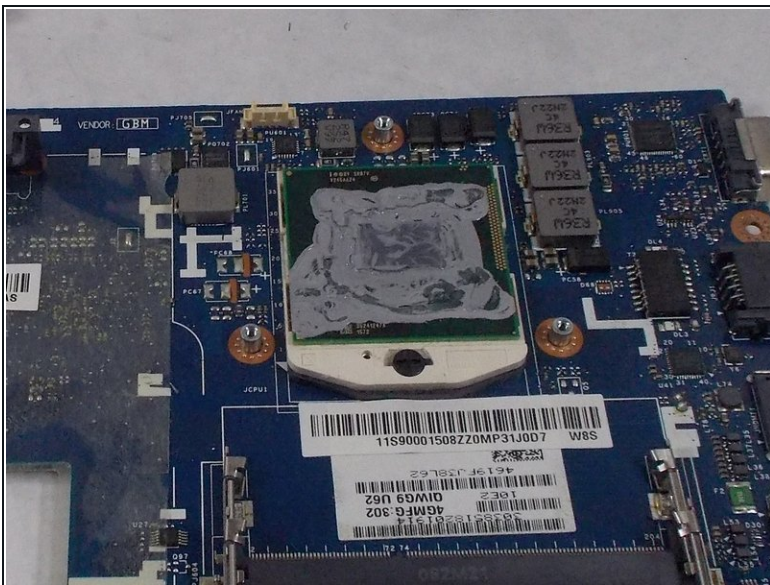


## Step 16



- Remove the three 2.0 x 3.2 mm Phillips #0 screws from the fan.
- Lift the fan straight off the motherboard.

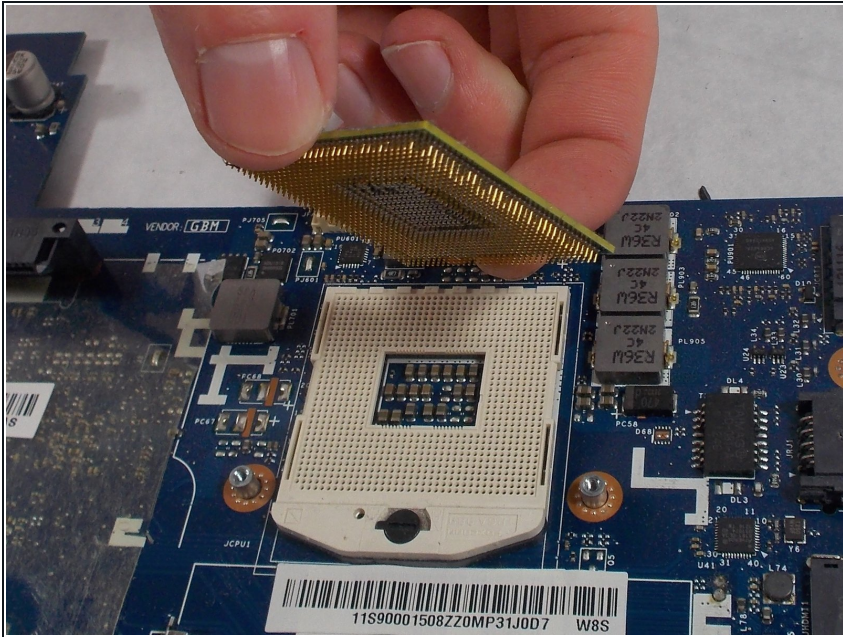
## Step 17



- Using a flathead screwdriver, turn the beige lock to counterclockwise to unlocked.



## Step 18



- Lift the CPU out of the socket.
- ⓘ Upon replacing the CPU and re-locking back in place, remember to apply thermal paste in order to prevent overheating.

To reassemble your device, follow these instructions in reverse order.