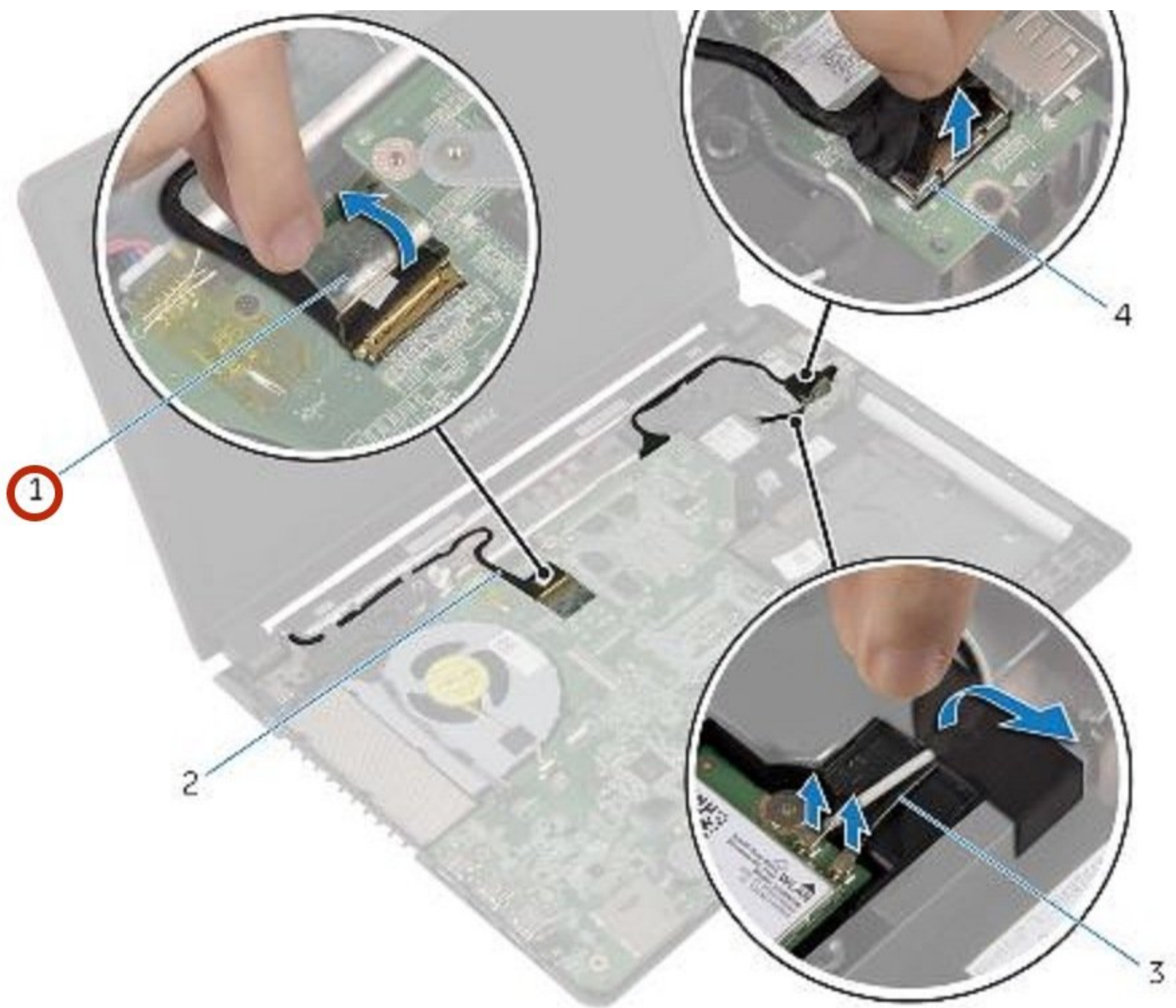




Dell Inspiron 14 7447 Display Assembly Replacement

Written By: Terrence15



INTRODUCTION

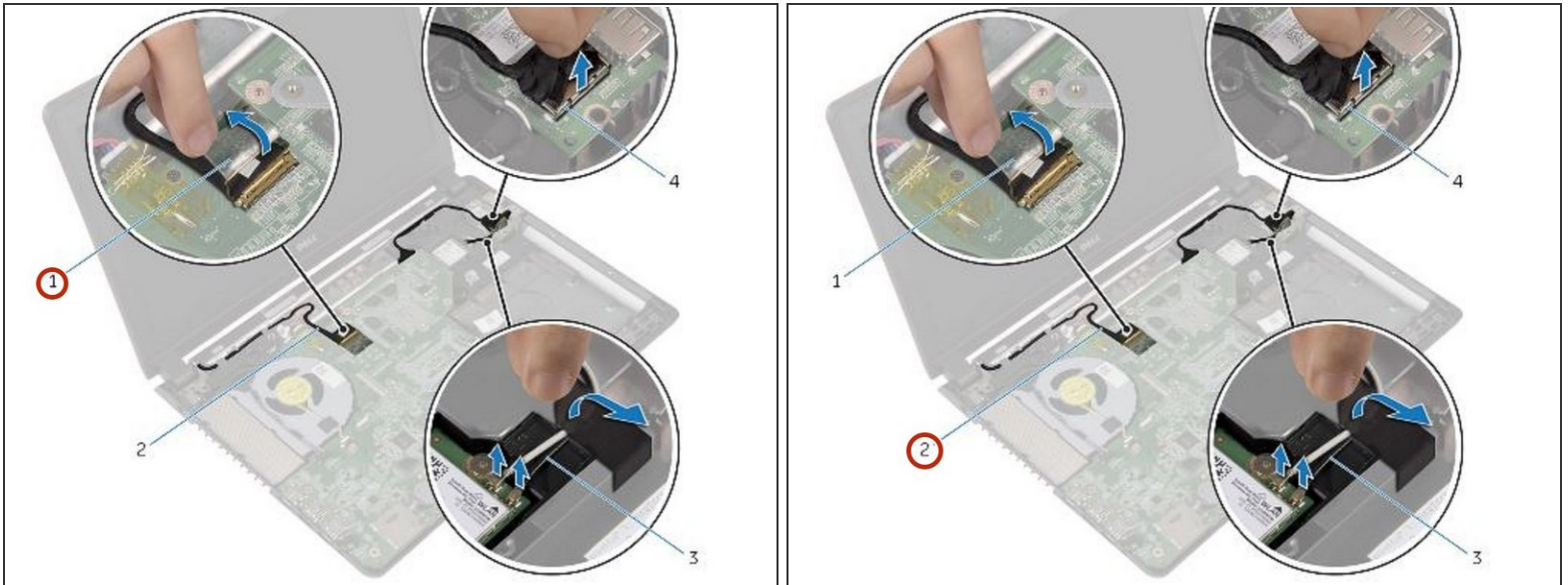
In this guide, we will be showing you how to remove and replace the Display Assembly.



TOOLS:

- [Phillips #0 Screwdriver](#) (1)
-

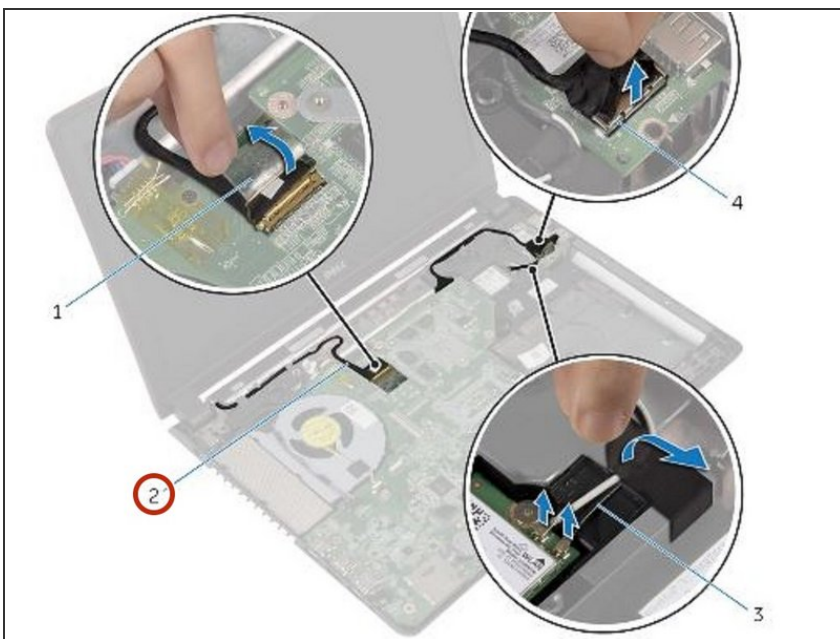
Step 1 — Disconnecting the Display Cable



⚠ WARNING: Before working inside your computer, read the safety information that shipped with your computer and follow the steps in [Before Working Inside Your Computer](#). After working inside your computer, follow the instructions in [After Working Inside Your Computer](#).

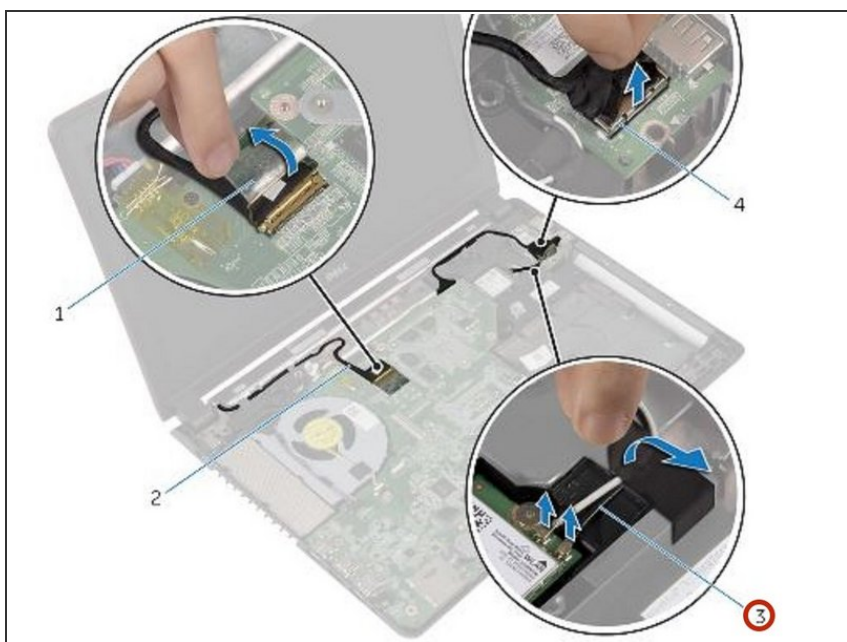
- Peel off the tape and disconnect the display cable from the system board.

Step 2 — Remove the Cable



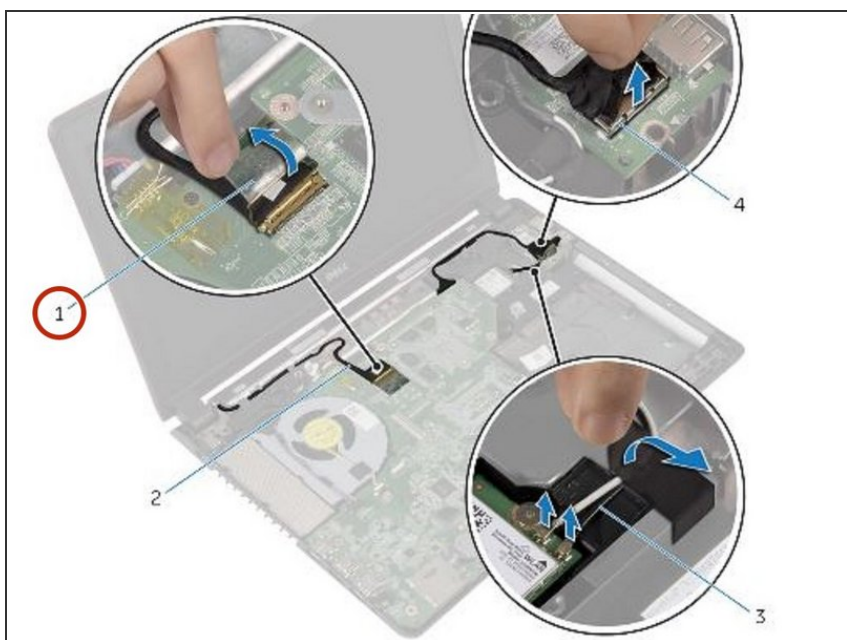
- Note the display cable routing and remove the cable from its routing guide.

Step 3 — Disconnecting the Antenna Cables



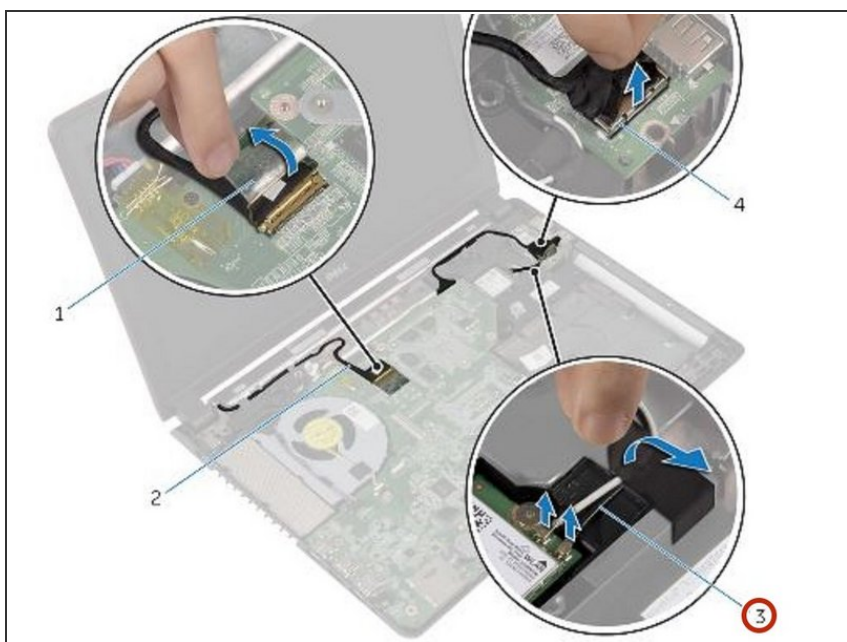
- Disconnect the antenna cables from the wireless card.

Step 4 — Peeling the Tape



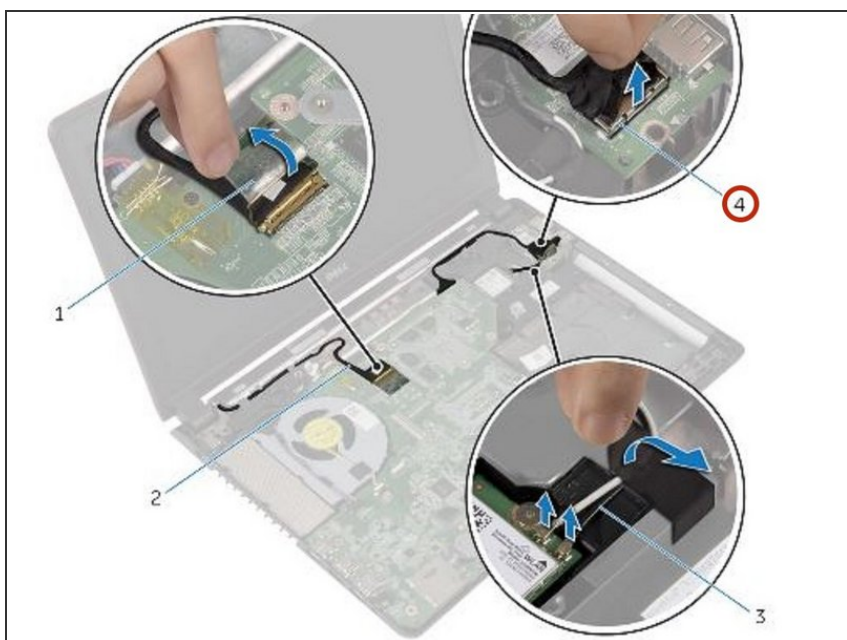
- Peel off the tape that secures the antenna cables to the speaker.

Step 5 — Remove the Cables



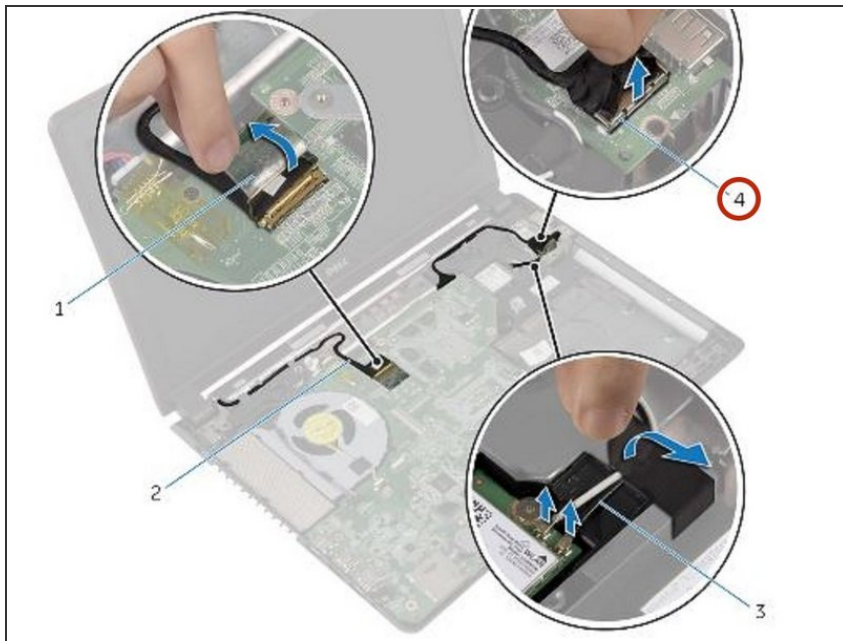
- Note the antenna cable routing and remove the cables from their routing guide.

Step 6 — Disconnecting the I/O Board Cable



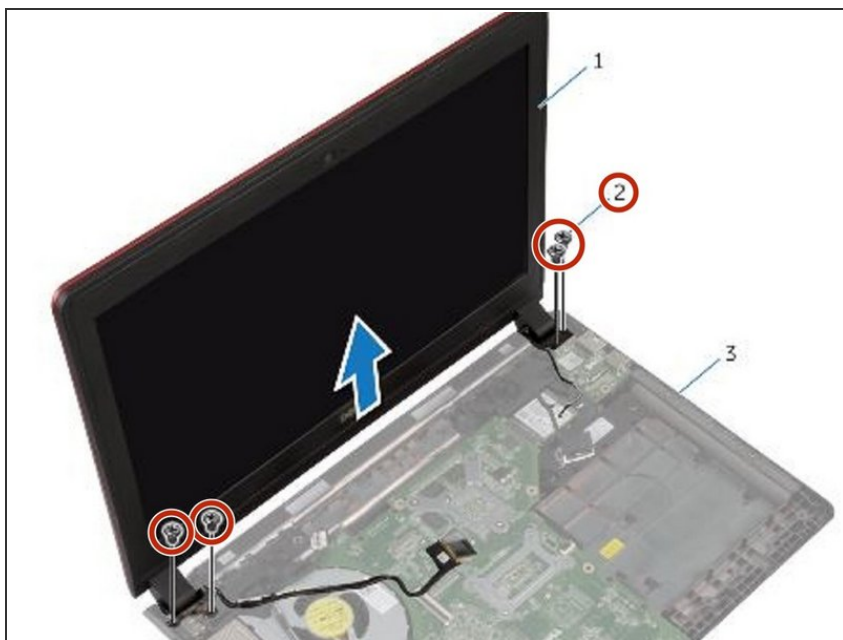
- Using the pull-tab, disconnect the I/O-board cable from the I/O board.

Step 7 — Remove the Cable



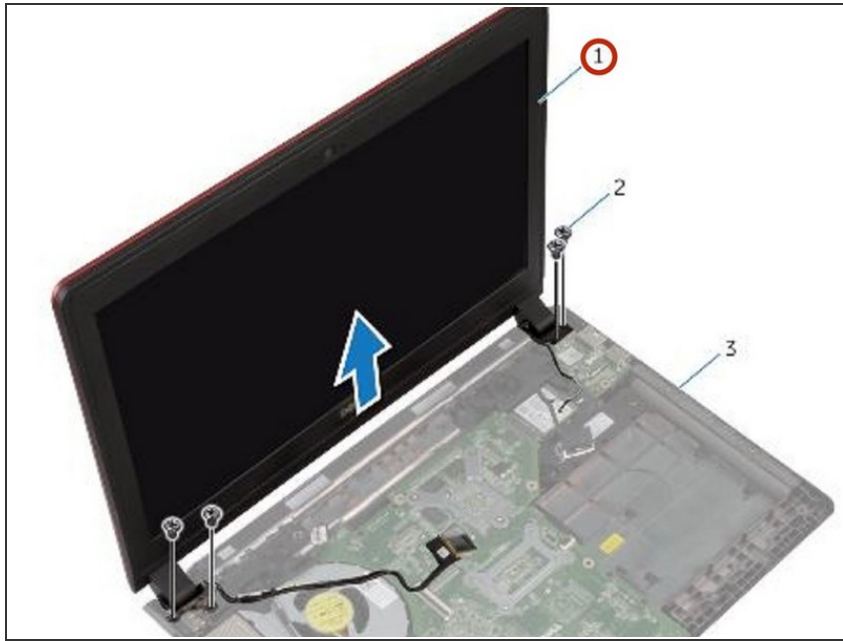
- Note the I/O-board cable routing and remove the cable from its routing guide.

Step 8 — Remove the Screws



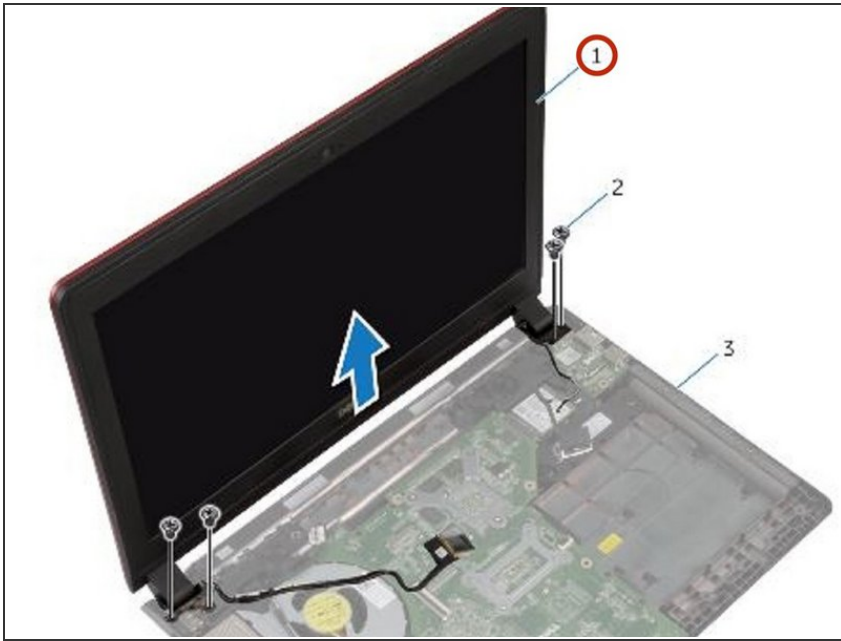
- Remove the screws that secure the display assembly to the computer base.

Step 9 — Lifting the Display Assembly



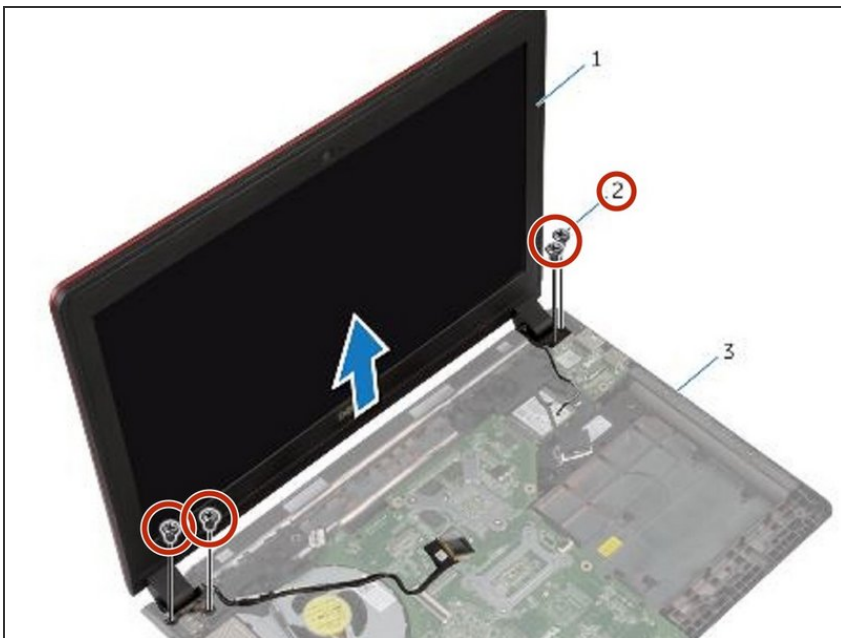
- Lift the display assembly off the computer base.

Step 10 — Placing the Display Assembly



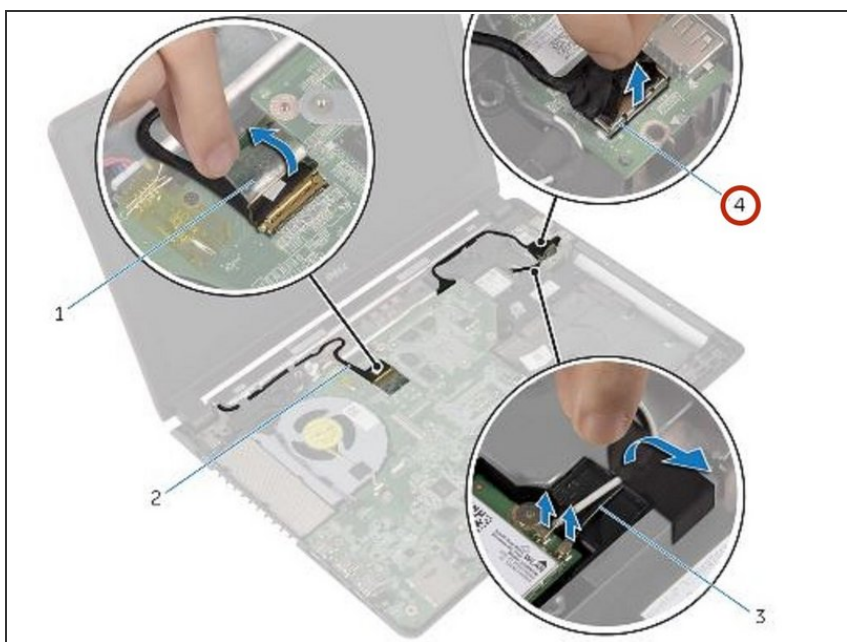
- Place the **NEW** display assembly on the computer base and align the screw holes on the display assembly with the screw holes on the computer base.

Step 11 — Replace the Screws



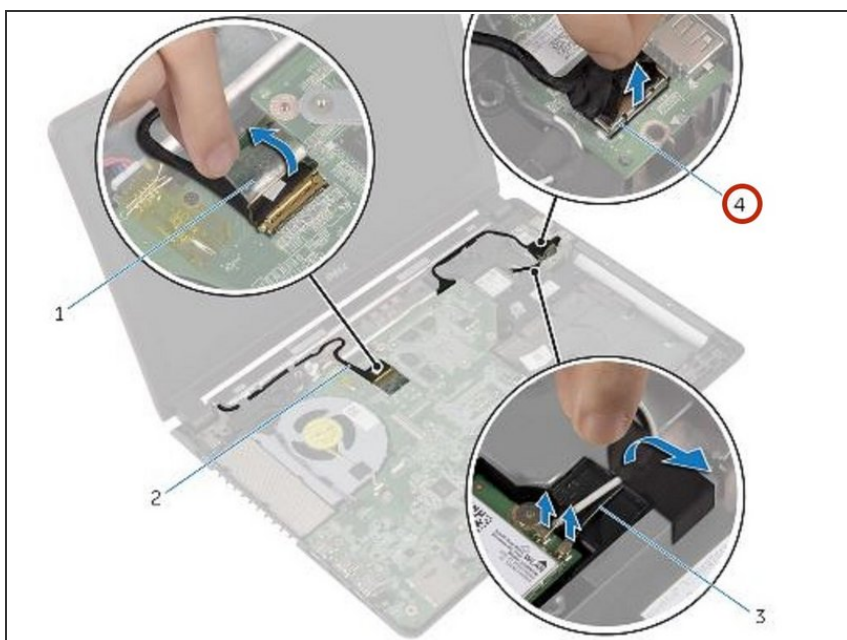
- Replace the screws that secure the display assembly to the computer base.

Step 12 — Routing the I/O Board Cable



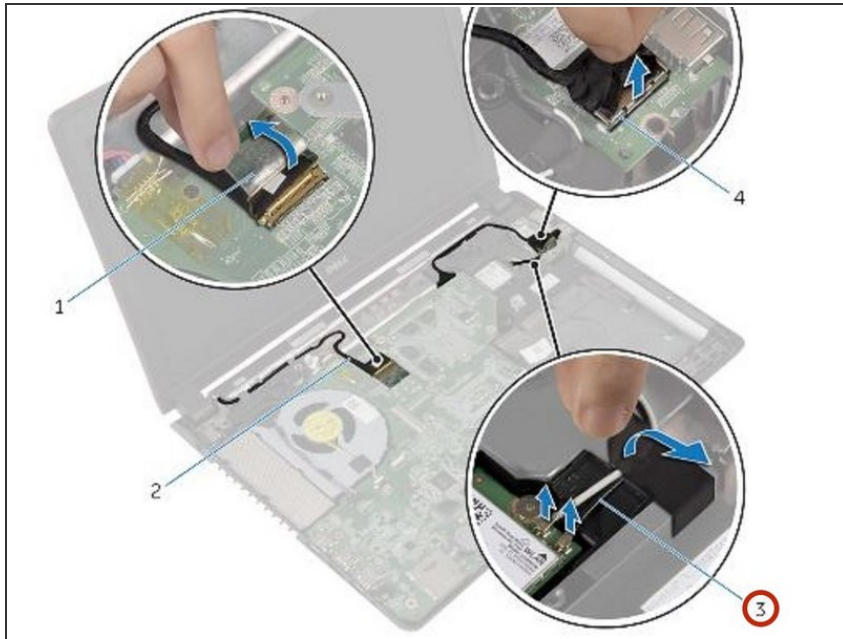
- Route the I/O-board cable through the routing guides on the computer base.

Step 13 — Connecting the I/O Board Cable



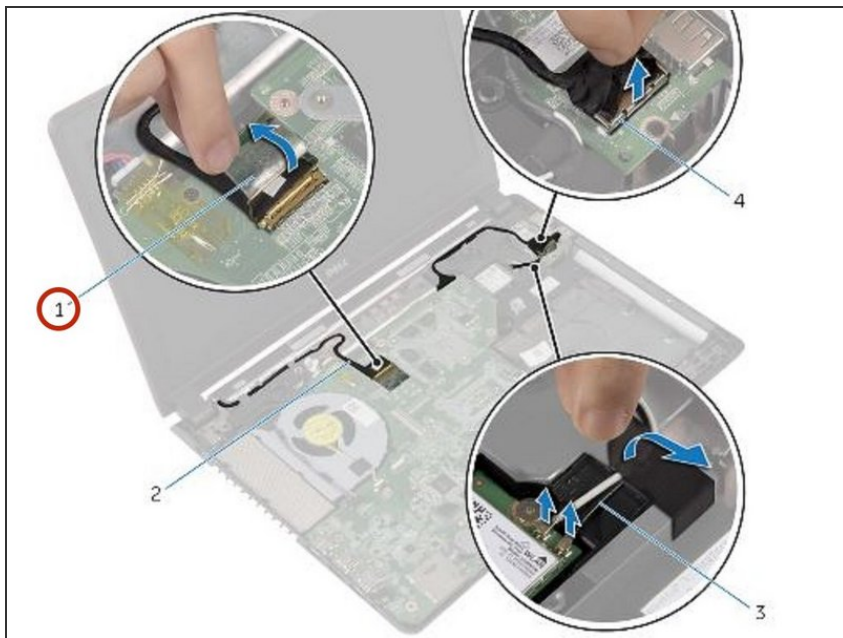
- Connect the I/O-board cable to the I/O board.

Step 14 — Routing the Antenna Cables



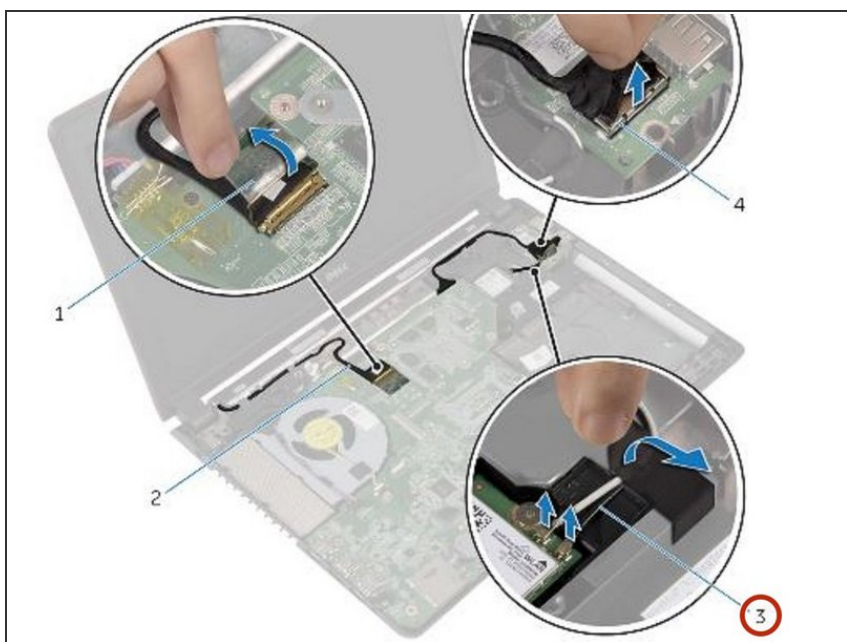
- Route the antenna cables through the routing guides on the computer base.

Step 15 — Adhering the Tape



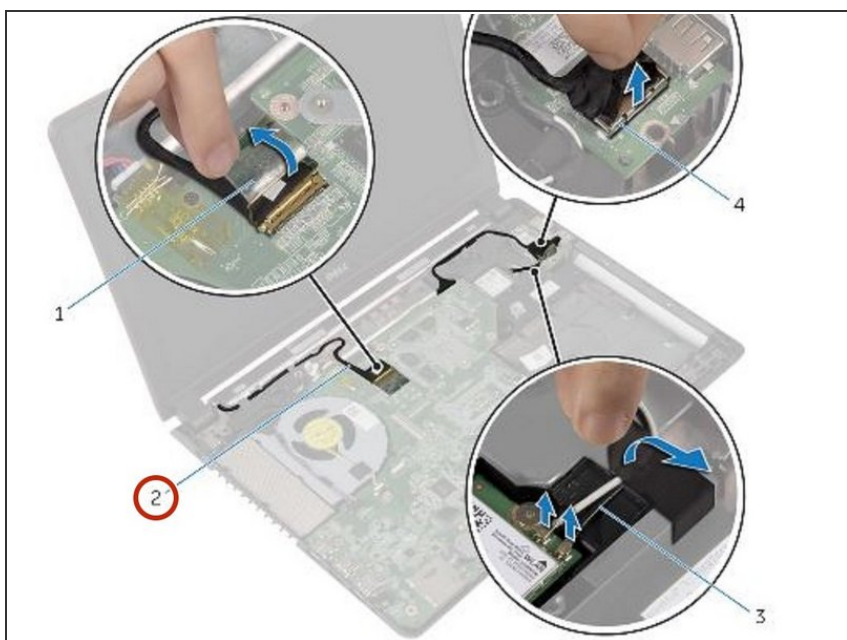
- Adhere the tape securing the antenna cables to the speaker.

Step 16 — Connecting the Antenna Cables



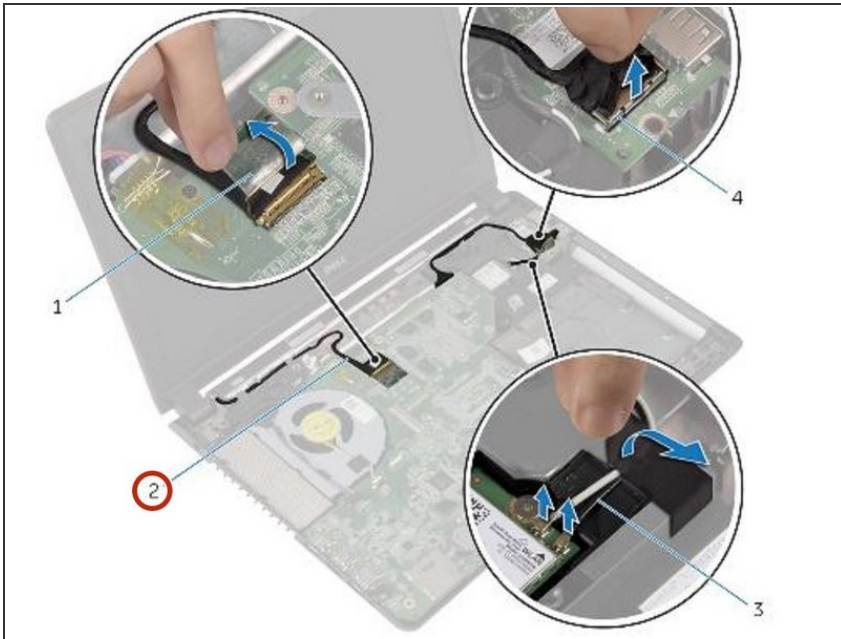
- Connect the antenna cables to the wireless card.

Step 17 — Routing the Display Cable



- Route the display cable through the routing guides on the computer base.

Step 18 — Connecting the Display Cable



- Connect the display cable to the system board and adhere the tape.

To reassemble your device, follow these instructions in reverse order.