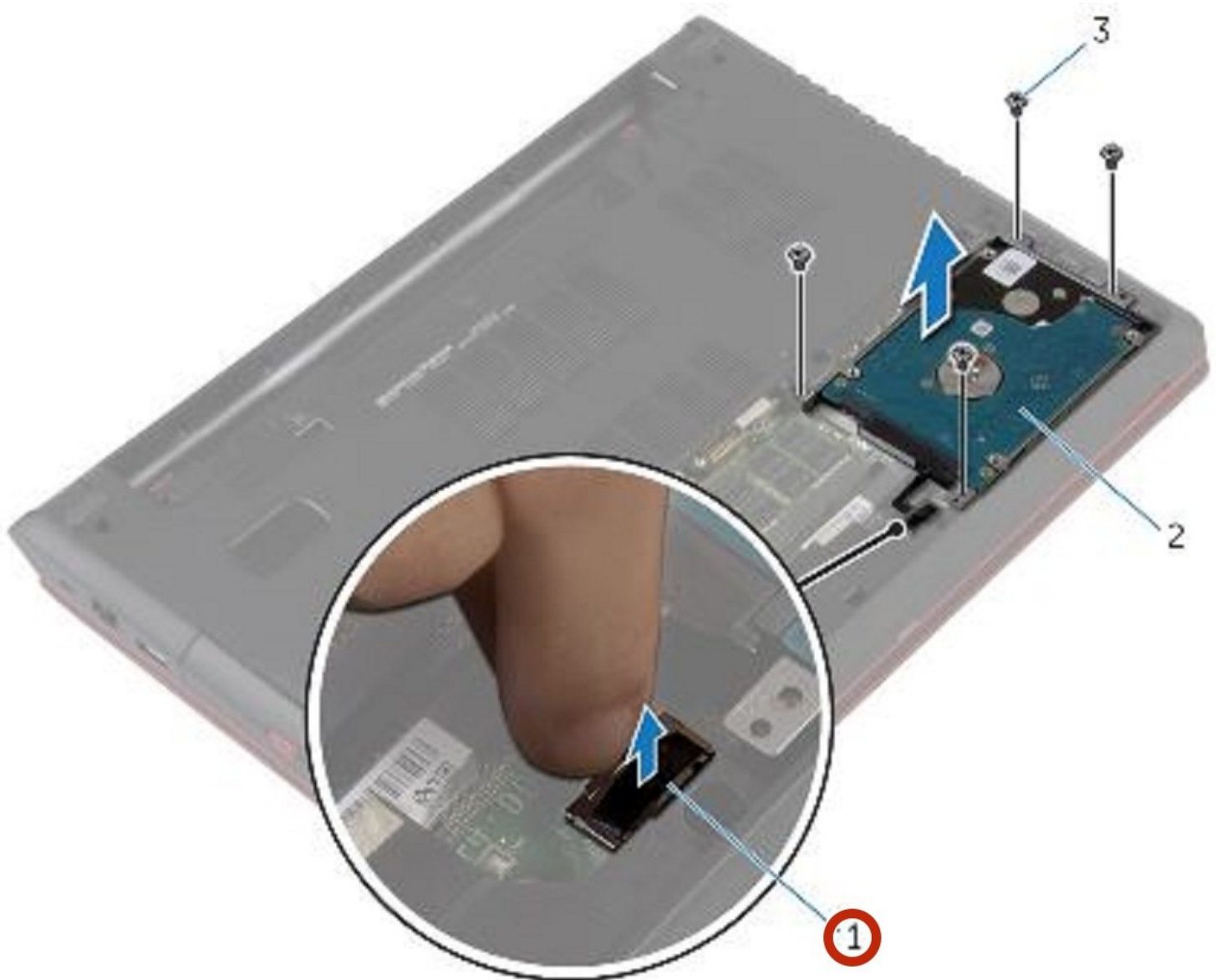




# Dell Inspiron 14 7447 Hard Drive Replacement

Written By: Terrence15



---

## INTRODUCTION

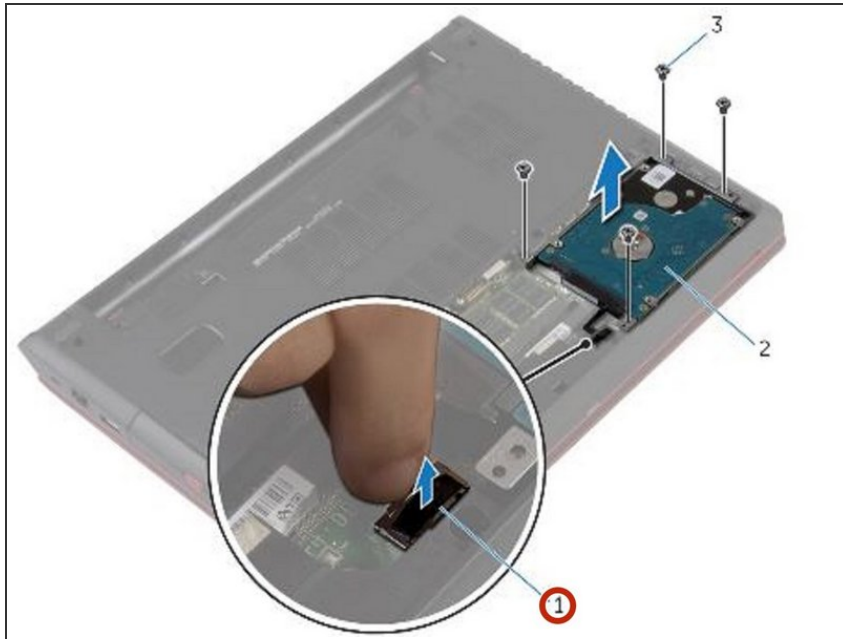
In this guide, we will show you how to remove and replace the Hard Drive.



### TOOLS:

- [Phillips #0 Screwdriver](#) (1)
-

## Step 1 — Disconnecting the Hard-Drive Cable



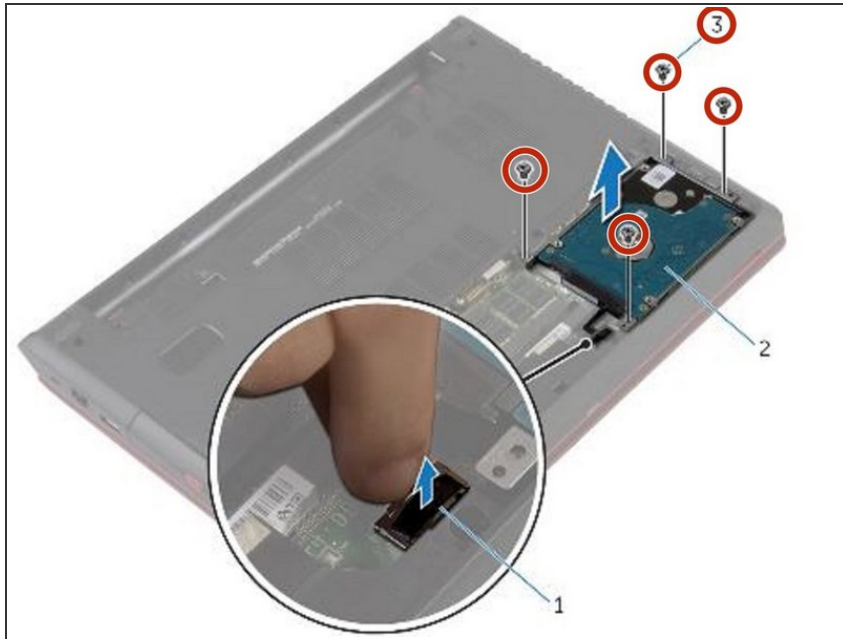
**⚠ WARNING:** Before working inside your computer, read the safety information that shipped with your computer and follow the steps in [Before Working Inside Your Computer](#). After working inside your computer, follow the instructions in [After Working Inside Your Computer](#).

**⚠ CAUTION:** Hard drives are fragile. Exercise care when handling the hard drive.

**⚠ CAUTION:** To avoid data loss, do not remove the hard drive while the computer is in Sleep or On state.

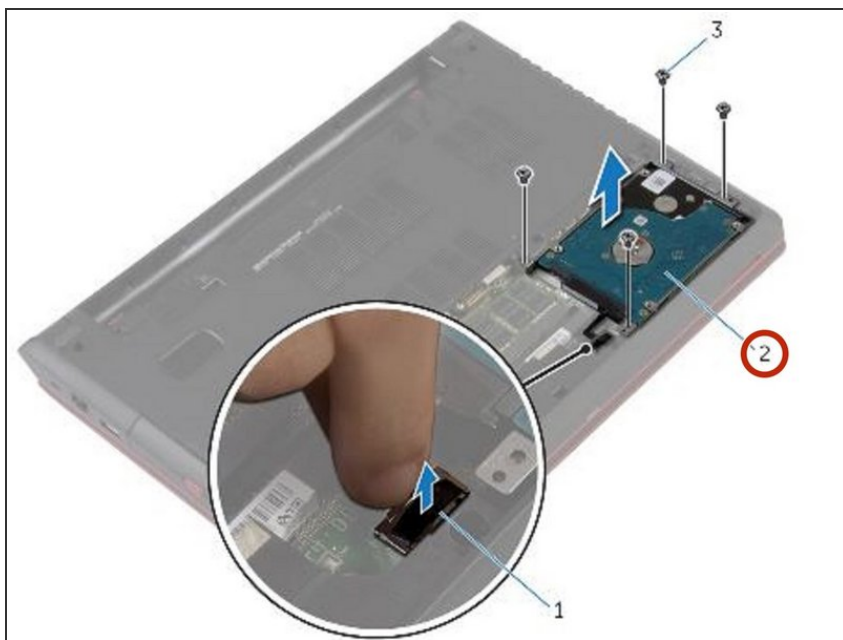
- Using the pull-tab, disconnect the hard-drive cable from the system board.

## Step 2 — Remove the Screws



- Remove the screws that secure the hard-drive assembly to the computer base.

## Step 3 — Lifting the Hard-Drive Assembly



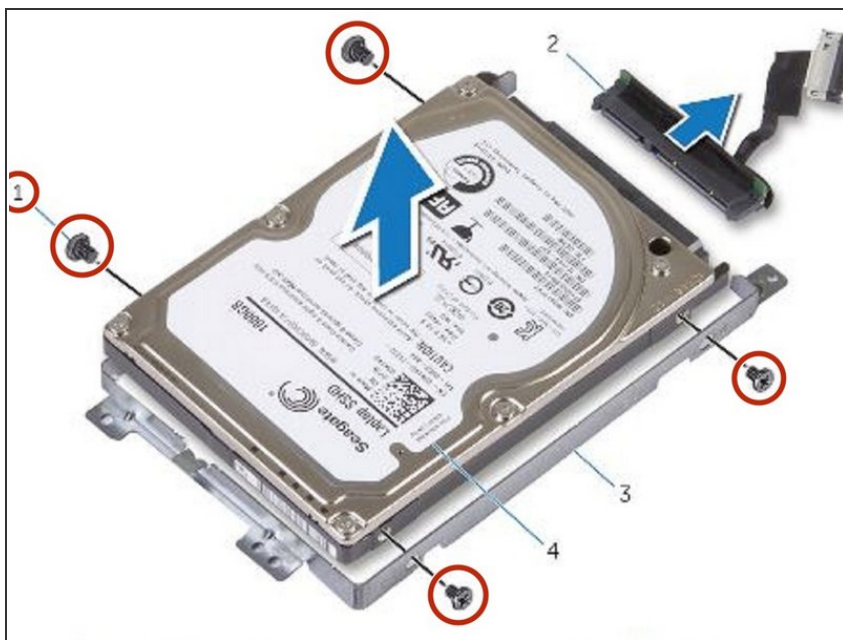
- Gently lift the hard-drive assembly out of the computer base.

## Step 4 — Disconnecting the Interposer



- Disconnect the interposer from the hard drive.

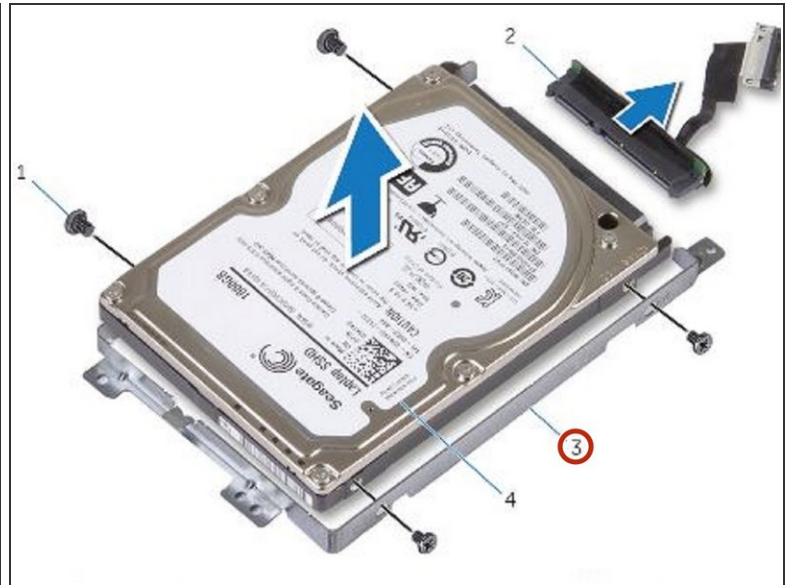
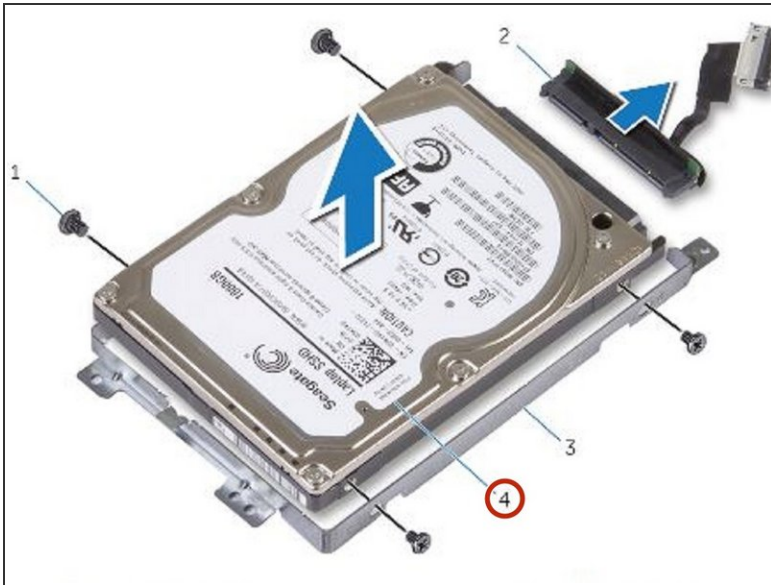
## Step 5 — Remove the Screws



- Remove the screws that secure the hard-drive bracket to the hard drive.

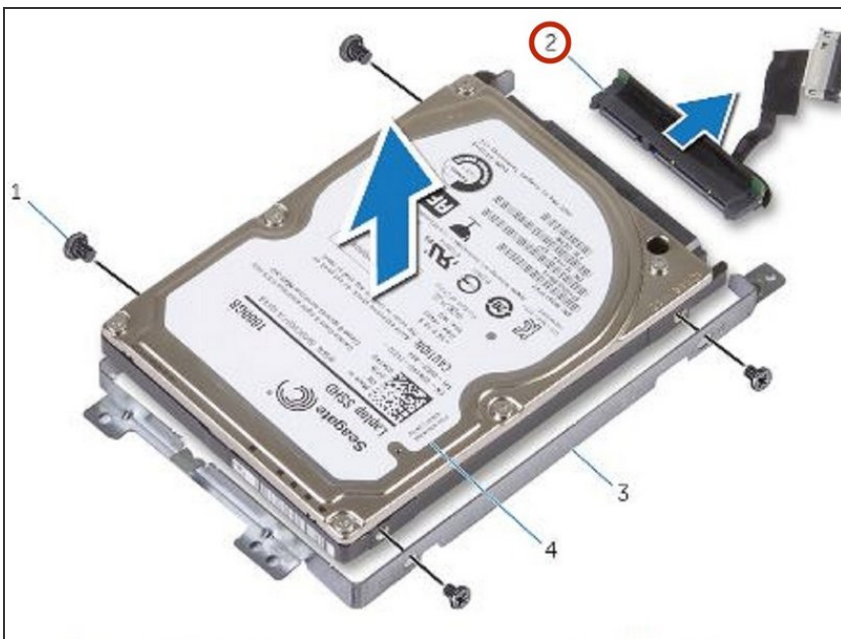


## Step 6 — Lifting the Hard Drive



- Lift the hard drive out of the hard-drive bracket.

## Step 7 — Connecting the Interposer



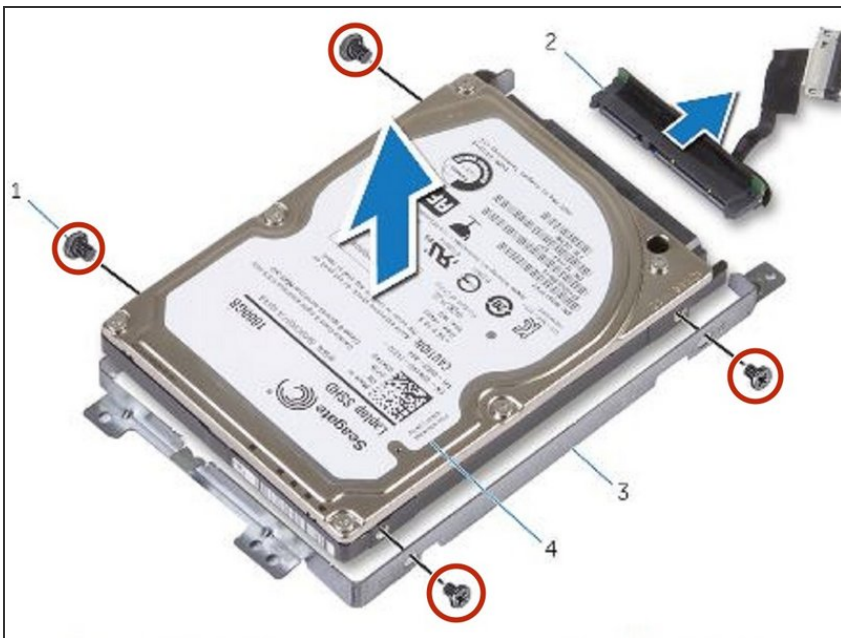
- Connect the interposer to the **NEW** hard drive.

## Step 8 — Align the Screw Holes



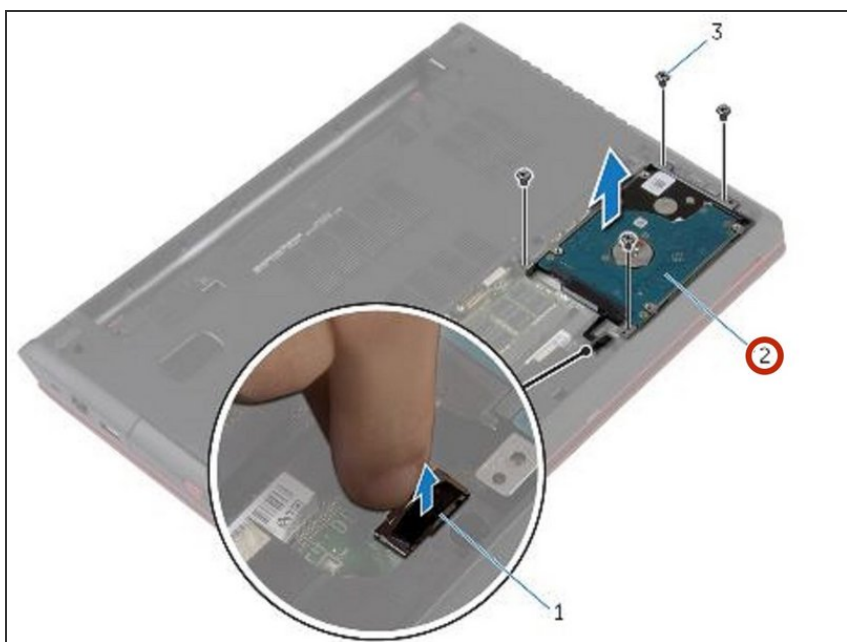
- Align the screw holes on the hard drive-bracket with the screw holes on the hard drive.

## Step 9 — Replace the Screws



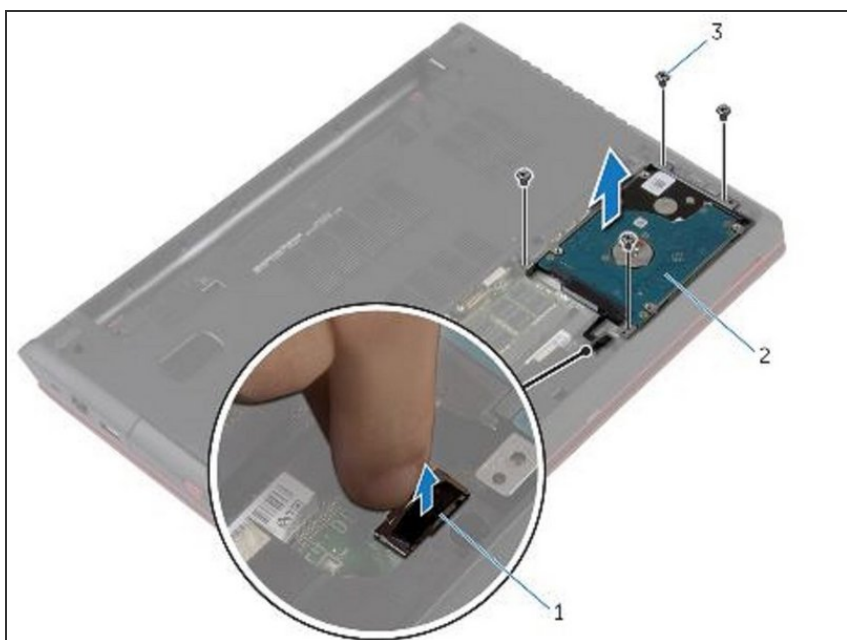
- Replace the screws that secure the hard-drive bracket to the hard drive.

## Step 10 — Placing the Hard-Drive



- Place the hard-drive assembly into the hard-drive bay.

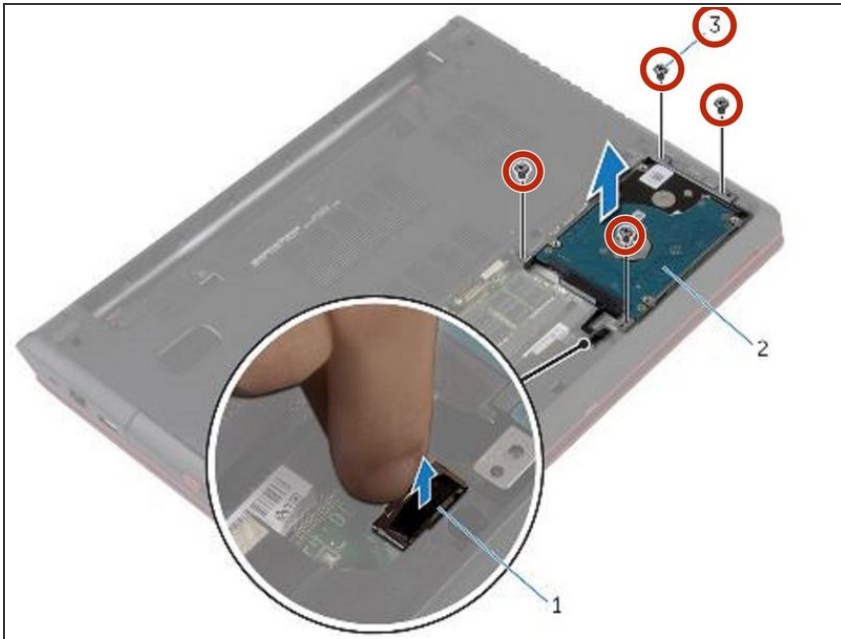
## Step 11 — Align the Screw Holes



- Align the screw holes on the hard-drive assembly with the screw holes on the computer base.

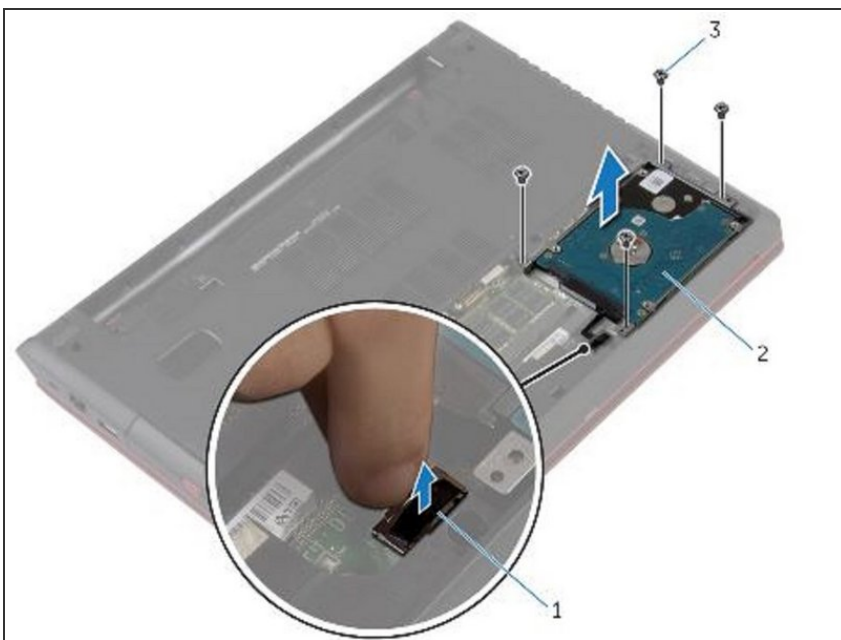


## Step 12 — Replace the Screws



- Replace the screws that secure the hard-drive assembly to the computer base.

## Step 13 — Connecting the Hard-Drive Cable



- Connect the hard-drive cable to the system board.

To reassemble your device, follow these instructions in reverse order.